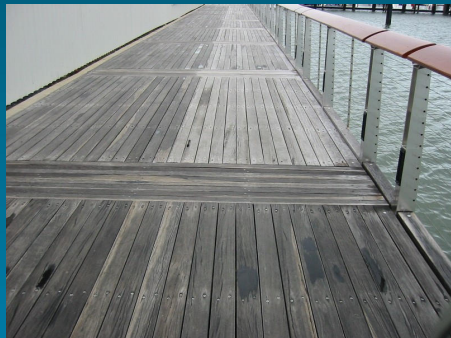


Timber is expensive and some timber grades are now extremely rare and need to be preserved. The preservative properties of lanolin have been known and utilised for hundreds of years. Lanotec Timber Seal products will repel moisture, prevent corrosion and give outstanding protection.

Lanotec Timber Seal and Timber Seal Plus — NATURALLY BETTER



Timber Seal used on a deck



Timber Seal PLUS used on Cairns Port boardwalk

APPLYING TIMBER SEAL

SEASONED AND KILN DRIED DRESSED TIMBER

(eg. Verandas, Pool Decking, Indoor & Outdoor Furniture)

PREPARATION:

- ✓ Previously untreated timber should be treated against mould and/or fungus spores before applying **Timber Seal**. (Choose known anti-fungal treatment brands)
- ✓ Ensure that the surface to be covered is **clean** and **dry**.

APPLICATION:

- ✓ Apply light coats of Lanotec **Timber Seal** using a mist spray (Garden weed sprayer works well for this application) and flat lamb's wool applicator to spread the product evenly.
- ✓ Allow a minimum of 6 hours between coats to allow the product to penetrate into the timber. Remember to "Let the timber do the talking" as the amount of coats you will need to apply will depend upon the timber's absorption rate.
- ✓ Timber will tend to be slightly tacky after coating **Timber Seal**. Simply buff the surface to remove tackiness for a fantastic finish.

Apply Lanotec **Timber Seal** to all end grains, bearers, checkouts, end plates, bolts and drill holes before assembly. Maximise your protection from moisture and help reduce any warping, twisting or splintering, by spraying all exposed surfaces.

After the Lanotec **Timber Seal** has fully penetrated into the timber and the carrier has evaporated, to avoid any tackiness, the timber must be rubbed or polished (eg with dry towelling or similar polishing cloth) to seal the wax and maximise the protective seal, highlighting your timber's natural grain.

APPLYING TIMBER SEAL PLUS ROUGH SAWN TIMBER

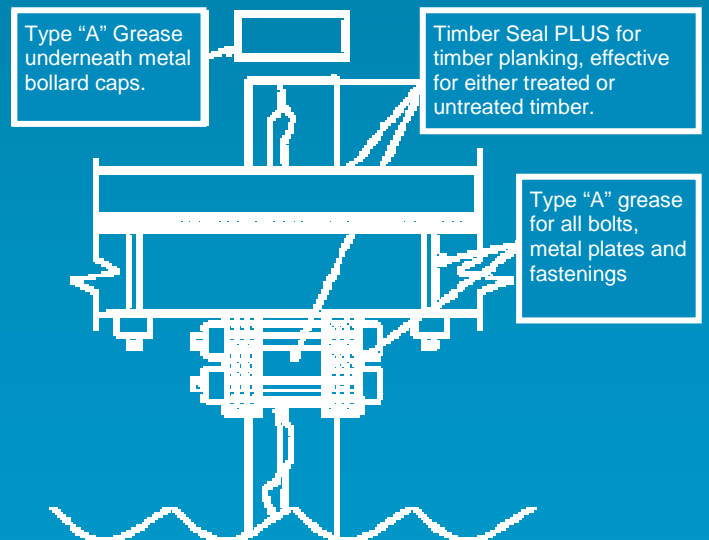
CONSTRUCTION STAGE:

- ✓ Apply Lanotec **Timber Seal PLUS** on decking, bearers, joists, end grains, checkouts, drill holes etc before assembly.
- ✓ For protection of Base plates, large bearers (eg wharves and timber bridges) bollard capping and threaded rods and bolts use Lanotec **Type "A" Grease**.
- ✓ In colder climates please use Lanotec **Soft Grease**.

APPLICATION STAGE:

- ✓ Apply light coats of Lanotec **Timber Seal PLUS**, using a direct spray method to minimise overspray.
- ✓ Allow 4-6 hours for the product to penetrate into the timber between coats. Manufacturers recommendation is two coats.

Application and results may vary due to the age and condition of timber.



NATURALLY BETTER



USEFUL HINTS FOR BEST RESULTS WITH LANOTEC PRODUCTS

“Let the Timber do the Talking”

All timbers are different and will display different rates of absorption. E.g. hardwood is less absorbent than softwood. The coverage rate is especially reduced on very dry softwood.

Imported Timbers eg, Kwela, Murbu and Kippur

Moisture content in timber will affect the penetration rate of Lanotec **Timber Seal** and can cause a patchy discolouring if the timber is not allowed to dry out (weather) completely. High levels of tannin and oily resins can also cause a patchy coloured effect, so a clean, dry surface is important before applying Lanotec **Timber Seal**. Allow approximately eight hours drying time between coats as a general guide.

GENERAL HINTS

- ✓ Remove previous surface coating. Previous (old) treatments can effect timber absorption of Timber Seal
- ✓ Remove algae & fungi deposits. Anti-Fungal/ mould treatment is recommended prior to applying Timber Seal
- ✓ If the timber has turned grey due to weathering, sanding the surface to remove dead fibre allows Lanotec **Timber Seal** to penetrate, hi-lighting timber's natural grain. Timber Seal will not prevent long term greying of timber
- ✓ If the timber is freshly milled or “green” only apply **Timber Seal** inside joints and on bolts and fasteners allowing the timber to weather for approx 8-10 weeks before applying any coating systems.
- ✓ If the timber surface has become dirty between applications, a light wash down with **Citra-Force** will restore the surface for further coats.
- ✓ Lanotec **Timber Seal** and **Timber Seal PLUS** are best applied by spraying or, for decking surfaces, by a foam roller. Knapsack or garden pump type applicators are suitable.
- ✓ Compatible with most solvents and oil based paints, however we advise conducting an adhesion test with an off-cut or inconspicuous area first.
- ✓ PLEASE NOTE: Lanotec **Timber Seal** is not compatible with water based acrylics.

OTHER FEATURES & BENEFITS

- ✓ Environmentally Safe and easy to use
- ✓ Non Toxic (Safe for the user)
- ✓ Acid resistant
- ✓ Reduces maintenance costs (extends life of timber and supporting structures)
- ✓ Cleanup is safe and easy with Lanotec's **Citra-Force** Cleaner/ Degreaser



Timber Seal is available in 1, 5 & 20 litres

COVERAGE GUIDE (DRESSED TIMBER)

Hardwood	New	Approx	10-15m ² /ltr
Hardwood	Old	Approx	8-10m ² /ltr
Softwood	New	Approx	8-10m ² /ltr
Softwood	Old	Approx	6-8m ² /ltr

TESTING STANDARDS INFORMATION

Salt Spray -	In accordance with AS 2331.3.1
Acid Resistance -	In Accordance with AS 1580.460.2



Timber Seal PLUS is only available in 20 litres

DISTRIBUTED BY:

Lanotec Australia Pty Ltd
Ph: 07 3373 3700
www.lanotec.com.au

