

GMP
ISO9001
ISO14001
ISO13485
CERTIFIED

PIHSIANG[®]

SHOPRIDER[®]

MODEL: **TE-778EL**

C-TILLER

(PATENTED)



PIHSIANG MACHINERY MFG. CO., LTD.

NO.108, HSIN-HE ROAD, HSIN-FENG HSIANG 304
HSINCHU COUNTY, TAIWAN

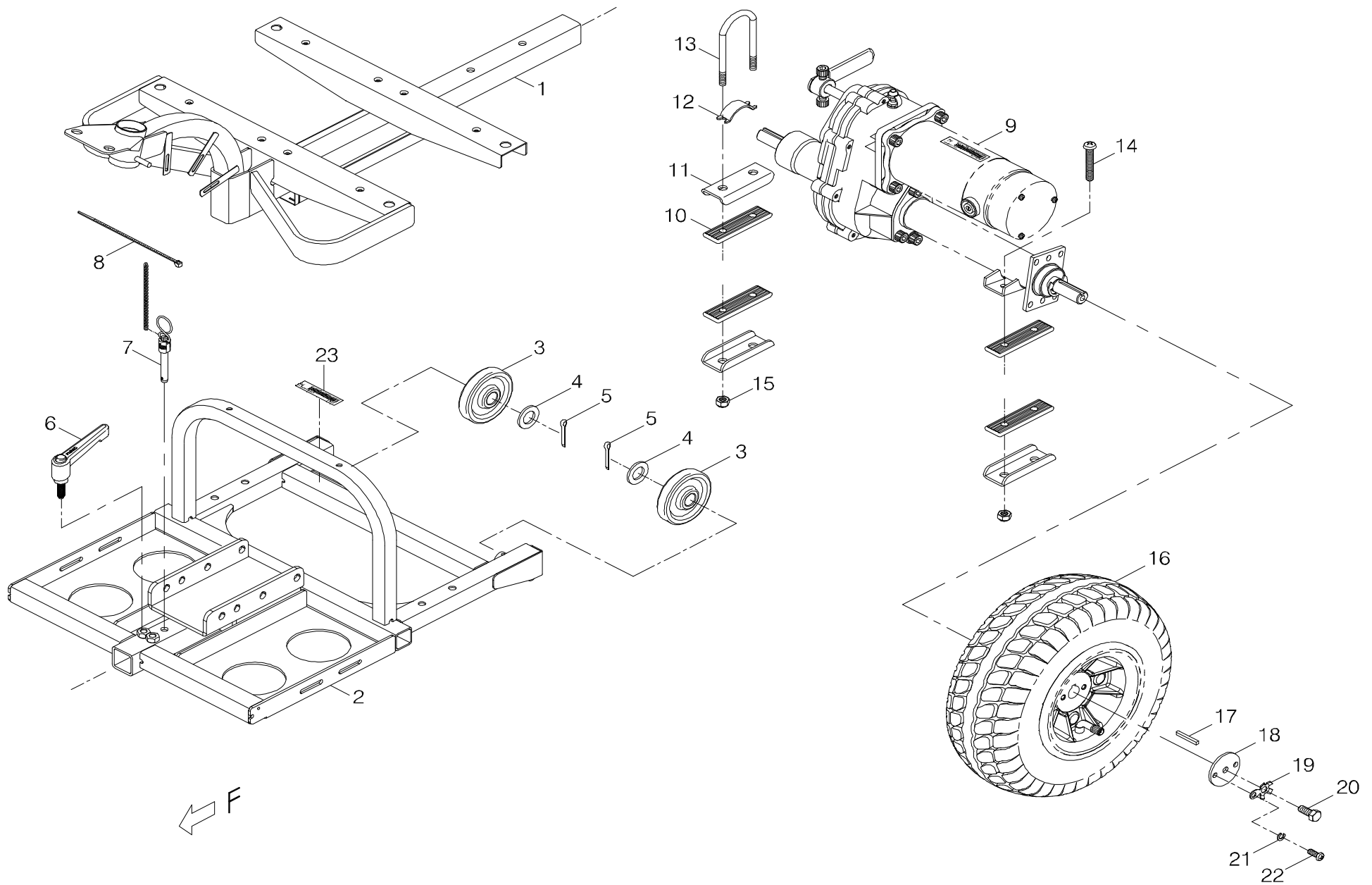
MODEL : SO3-B60002

ITEM	PART NO.	DESCRIPTION	SPECIFICATION	REMARK
1	CA08-0C778EL-12	Invalid Power Chair	TE-778EL, Silver, C-Bar	TE-778EL(銀灰)(氣壓棒)/成品車(SILVER)C把/CA08(新C披覆)
2	CA08-0C778EL-22	Invalid Power Chair	TE-778EL, Burgundy Red, C-Bar	TE-778EL(棗紅)(氣壓棒)/成品車(RED)C把/CA08(新C披覆)
3	CA08-0C778EL-4A	Invalid Power Chair	TE-778EL, Blue, C-Bar	TE-778EL(孔雀藍)(氣壓棒)/成品車(Blue)C把/CA08(新C披覆)

TABLE OF CONTENTS

ILLUSTRATION

INDEX.1	FRONT & REAR CHASSIS ASSEMBLY-----	前、後車架總成-----	1-1~2
INDEX.2	DRIVE-TRAIN ASSEMBLY-----	馬達剎車變速箱總成-----	2-1
INDEX.3	MOTOR ASSEMBLY-----	馬達(總成)-----	3-1
INDEX.4	REAR WHEEL ASSEMBLY-----	後輪總成-----	4-1
INDEX.5	STEERING SHAFTASSEMBLY-----	操向桿總成-----	5-1
INDEX.6	FRONT WHEEL ASSEMBLY-----	前輪總成-----	6-1
INDEX.7	C-TYPE HANDLE BAR W/ HAND GRIP-----	C型把手+披覆加工(氣壓棒)---	7-1
INDEX.8	BLACK VINYL DELUXE SEAT ASSEMBLY---	大折疊椅模組+滑道-----	8-1~2
INDEX.9	FRONT CHASSIS COVER ASSEMBLY-----	前蓋板總成-----	9-1~2
INDEX.10	REAR CHASSIS COVER ASSEMBLY-----	後蓋板總成-----	10-1~4
INDEX.11	FULL LIGHT ASSEMBLY-----	全燈總成-----	11-1
INDEX.12	HANDLE BAR COVER ASSEMBLY-----	把手蓋總成-----	12-1~2
INDEX.13	REAR TILLER COVER ASSEMBLY-----	把手下蓋總成(全燈)(氣壓棒)--	13-1~2
INDEX.14	CONTROL ASSEMBLY-----	上控制總成-----	14-1~2
INDEX.15	C-TYPE HANDLE BAR ASSEMBLY-----	C型把手總成(氣壓棒)-----	15-1
INDEX.16	MAIN CONTROL BOX ASSEMBLY-----	下控制總成(C把)含固定片配件-	16-1
INDEX.17	SLA BATTERIES W/ BATTERY CABLES-----	加電瓶模組-----	17-1
INDEX.18	CONTROL AND BATTERY WIRING ILLUSTRATION-	控制及電瓶導線總成-----	18-1
	APPENDIX(1)-----	附錄(1)	

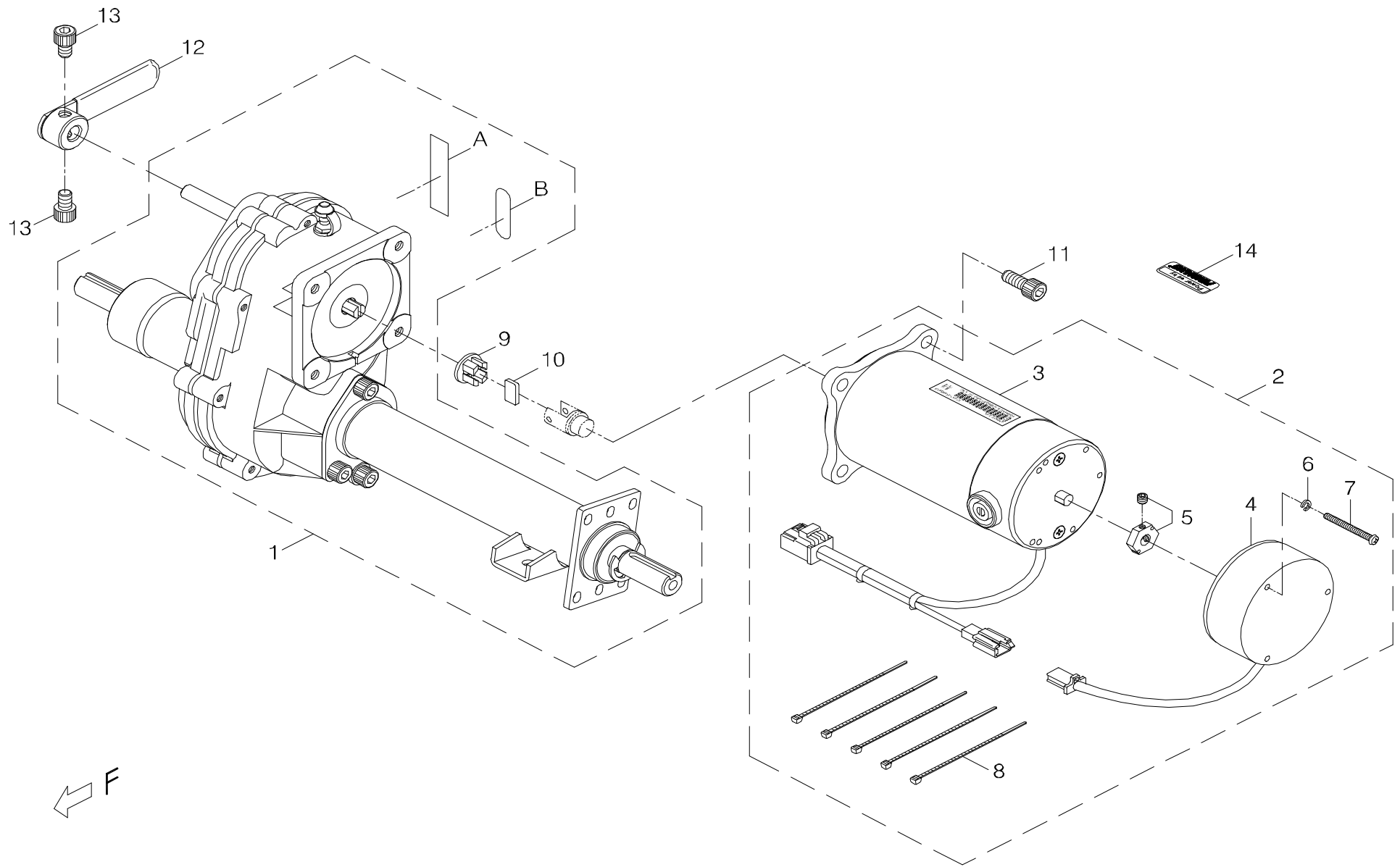


INDEX.1

[back to contents](#)

Index NO.	Part NO.	Qty.	Description	Specification	Remark
1	-----		Front & Rear chassis assembly		
1-1	102101-77801-A2	1	Front chassis assembly	778EL/L	前車架總成/778EL/L(A2)
1-2	102201-77800-A3	1	Rear chassis assembly	778EL(A3)	後車架總成/778EL(A3)
			-----*-----		
1-3	209928-88100	2	anti-tip wheel	3	防傾輪/3"
1-4	4001305-00	2	Flat Washer	A305, ϕ 17.5*30*2.6t	平墊圈/A305 (ϕ 17.5*30*2.6t)
1-5	5023-03025-210	2	Split pin	M3*25L,Multicolored Galvanized	開口銷/M3*25L (五彩)
			-----*-----		
1-6	201203-78700	1	Tightening Lever	Red, M8*25L	拉柄螺栓/787N(總長82L)(紅色)
1-7	202922-00104	1	Connecting pin	ϕ 7.85,Without loop	安全銷(含鍊條10L)/ ϕ 7.85(無環)
1-8	505201-01500-50	1	cable Tie	CV-150B	束帶/CV-150B
			-----*-----		
1-9	-----	REF(1)	Drive-train assembly		馬達剎車變速箱總成
1-10	209909-88100	4	Rubber Gasket	85*25*7t	減震膠片(二孔距47mm)
1-11	4001168-00	3	Bracket	A168	固定片/A168
1-12	4001192-00	1	Arc Plate	A192	弧形片/A192
1-13	4003210-01	1	U-Type Screw	C210-1	U型螺栓/C210-1
1-14	5005-08050-210	2	Philip Screw	M8*P1.25*50L,Multicolored Galvanized	十字圓頭螺栓/M8*P1.25*50L (五彩)
1-15	5012-08013-200	4	Nyloc Nut	M8*P1.25*13 7.8t,Multicolored Galvanized	尼龍螺帽/M8*P1.25*13邊7.8t(五彩)
			-----*-----		
1-16	-----	REF(2)	Rear wheel assembly		後輪總成
1-17	505301-00505-02	2	Drive Key	5*5*35	單頭圓鍵/5*5*35
1-18	4001364-00	2	Flat Washer	A364, ϕ 8*45*3t	平墊圈/A364 (ϕ 8*45*3t)
1-19	4001481-00	2	CLocking tab washer	A481	螺栓防鬆片/A481

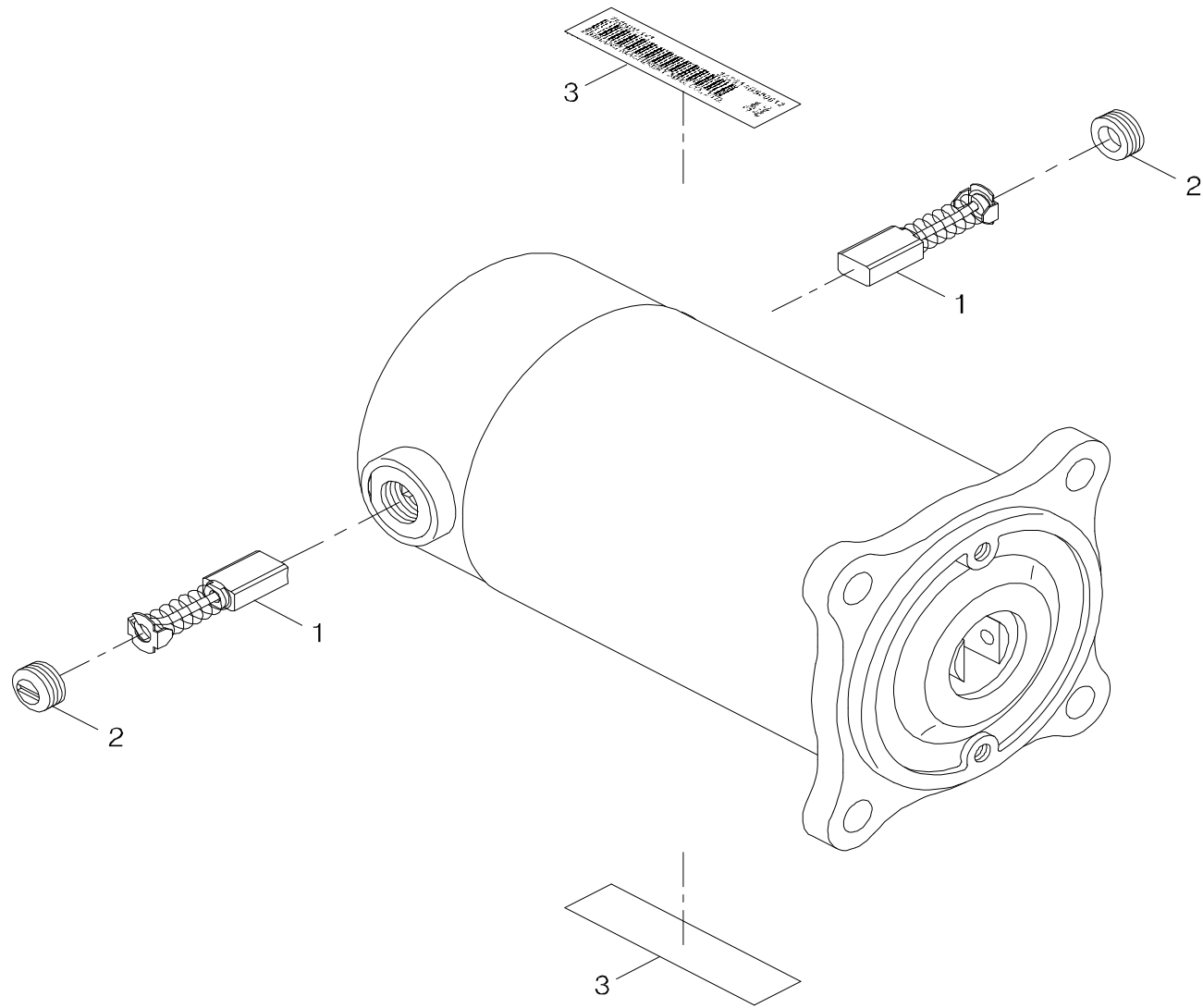
Index NO.	Part NO.	Qty.	Description	Specification	Remark
1-20	5001-08020-440	2	Hex Head Bolt	M8*P1.25*20L,SUS304	外六角鋼栓/M8*P1.25*20L SUS304
1-21	5022-06010-210	4	Spring Washer	Φ 6*10, Multicolored Galvanized	彈簧墊圈/Φ 6*10 (五彩)
1-22	5005-06016-443	4	Philip Screw,Nyloc	M6*P1.0*16L,SUS	十字圓頭螺栓/M6*P1.0*16L SUS 耐落
			-----*-----		
1-23	-----	REF(1)	DECAL		條碼貼紙



INDEX.2

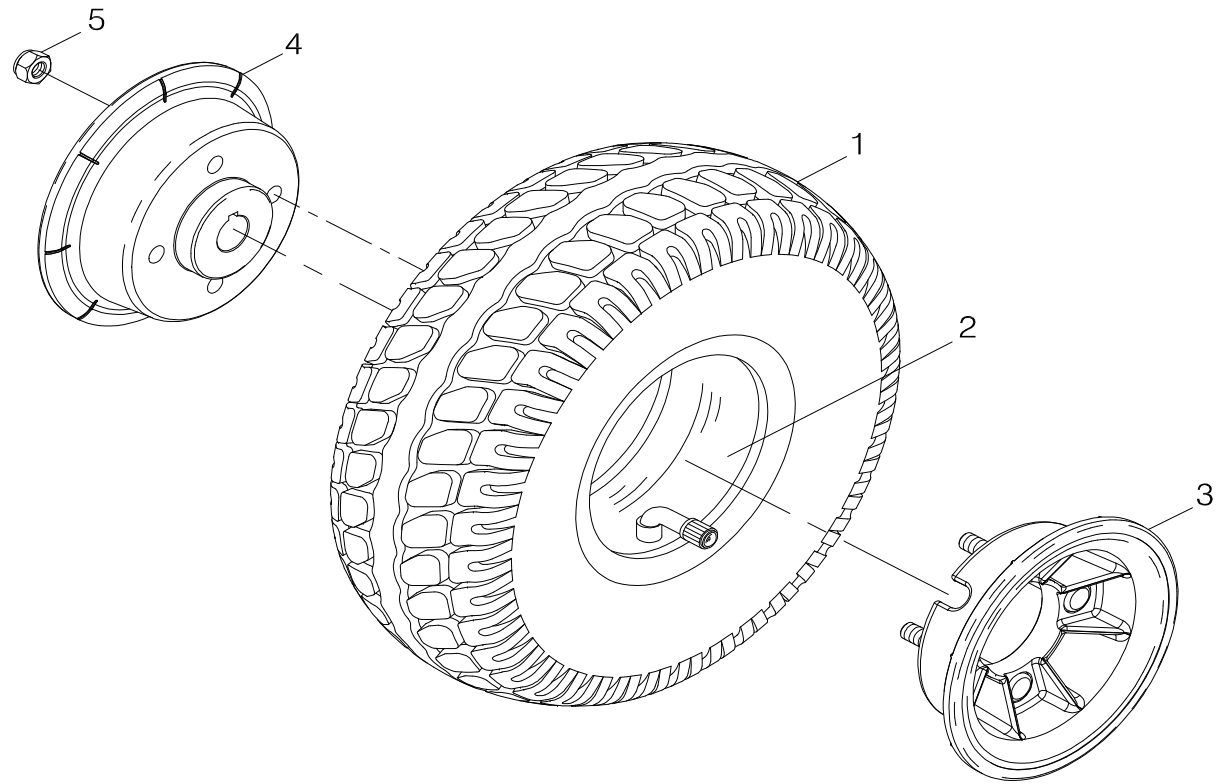
[back to contents](#)

Index NO.	Part NO.	Qty.	Description	Specification	Remark
2	100001-77800-A2	1	Drive-train Assembly	8MNW-2, #6, 778ELNTBG	馬達剎車變速箱總成/(8MNW-2)+(#6)+778EL NTBG
2-1	100401-77800-A5	1	Transaxle	778EL NTBG, #1-1, Black, A5	變速箱/778EL NTBG(#1-1),黑色(A5)
2-A	-----	REF(1)	DECAL		條碼貼紙
2-B	301174-09	REF(1)	Warning sticker	N74-9	警告專利貼紙/N74-9
2-2	100101-88106-A3	1	Motor and Brake Assembly	8MNW-2, #6	馬達剎車總成(非管制保稅)/8MNW-2+#6
2-3	1302-00101-06	1	Motor Assembly	8MNW-2	馬達(總成)/8MNW-2
2-4	100309-88100	1	Electromagnetic brake assembly	#6	電磁剎車總成#6/(含剎車線)
2-5	200301-66400	1	Driving Hex Axle for Brake Disc	#1, ϕ 8*19.1*6L	剎車六角軸套/#1 (ϕ 8*對邊19.1*6L)
2-6	5022-04007-210	3	Spring Washer	ϕ 4*7*1.25t, Multicolored Galvanized	彈簧墊圈/ ϕ 4*7*1.25t (五彩)
2-7	5005-04040-210	3	Screw	M4*P0.7*40L, Multicolored Galvanized	十字圓頭螺栓/M4*P0.7*40L (五彩) 全牙
2-8	505201-00940-50	3	Cable Tie	CV-094B	束帶/ CV-094B
2-9	200904-88100C	1	Joint Adapter	for Transaxle	變速箱連接襯套
2-10	200905-88100	1	Plate for Joint Adapter		變速箱連接片
2-11	5002-08020-220	4	CAP HEAD ALLEN SCREW	M8*P1.25*20L, Multicolored Galvanized	圓頭內六角鋼栓/M8*P1.25*20L (五彩)
2-12	200902-88100	1	Freewheel Lever	100L	離合器拉柄/100L
2-13	5002-08012-220	2	CAP HEAD ALLEN SCREW	M8*P1.25*12L, Multicolored Galvanized	圓頭內六角鋼栓/M8*P1.25*12L (五彩)
2-14	301179-04	1	Trademark Sticker	N79-4	指示貼紙(40*15.5)/N79-4(Powered by PIHSIANG)



INDEX.3

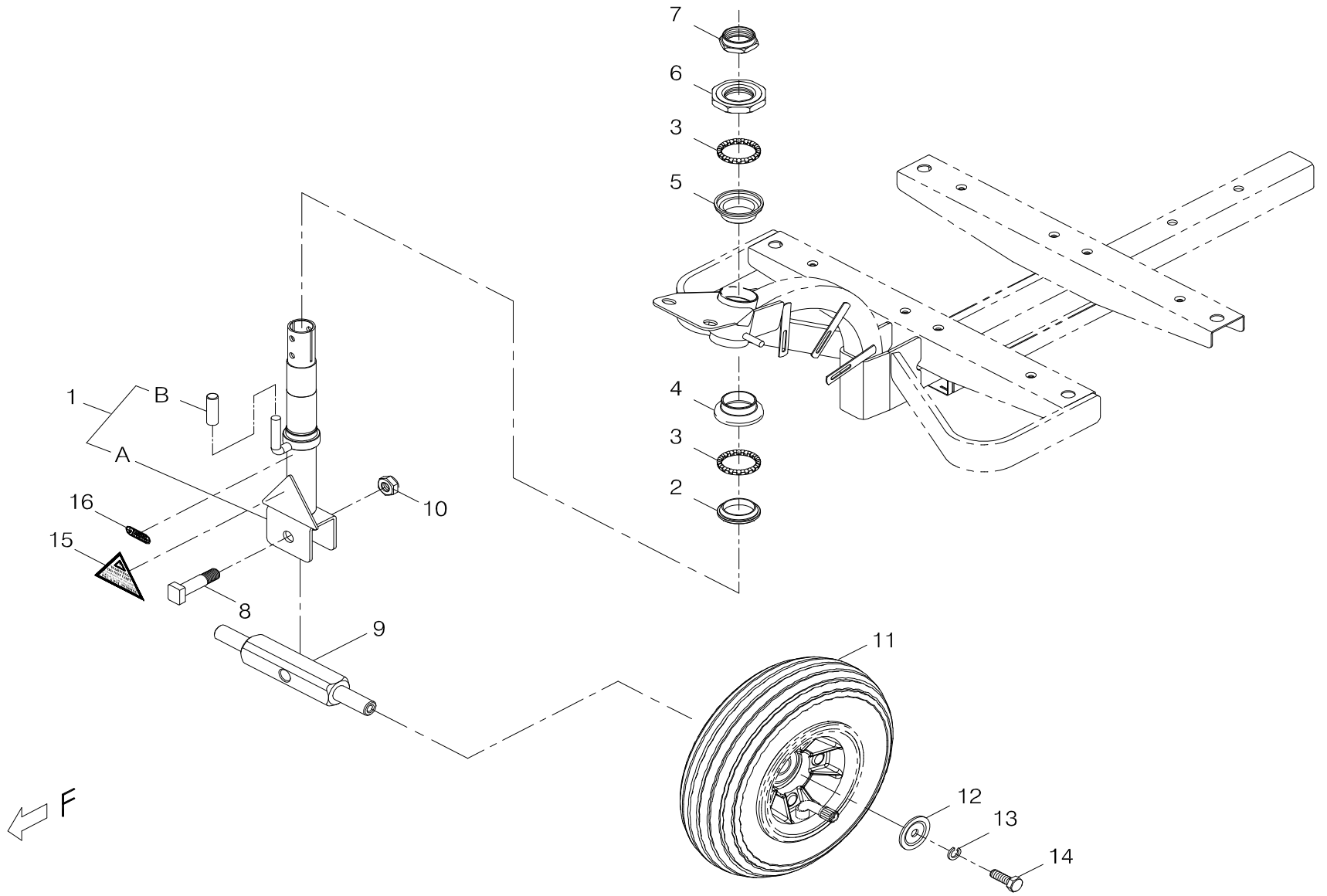
[back to contents](#)



INDEX.4

[back to contents](#)

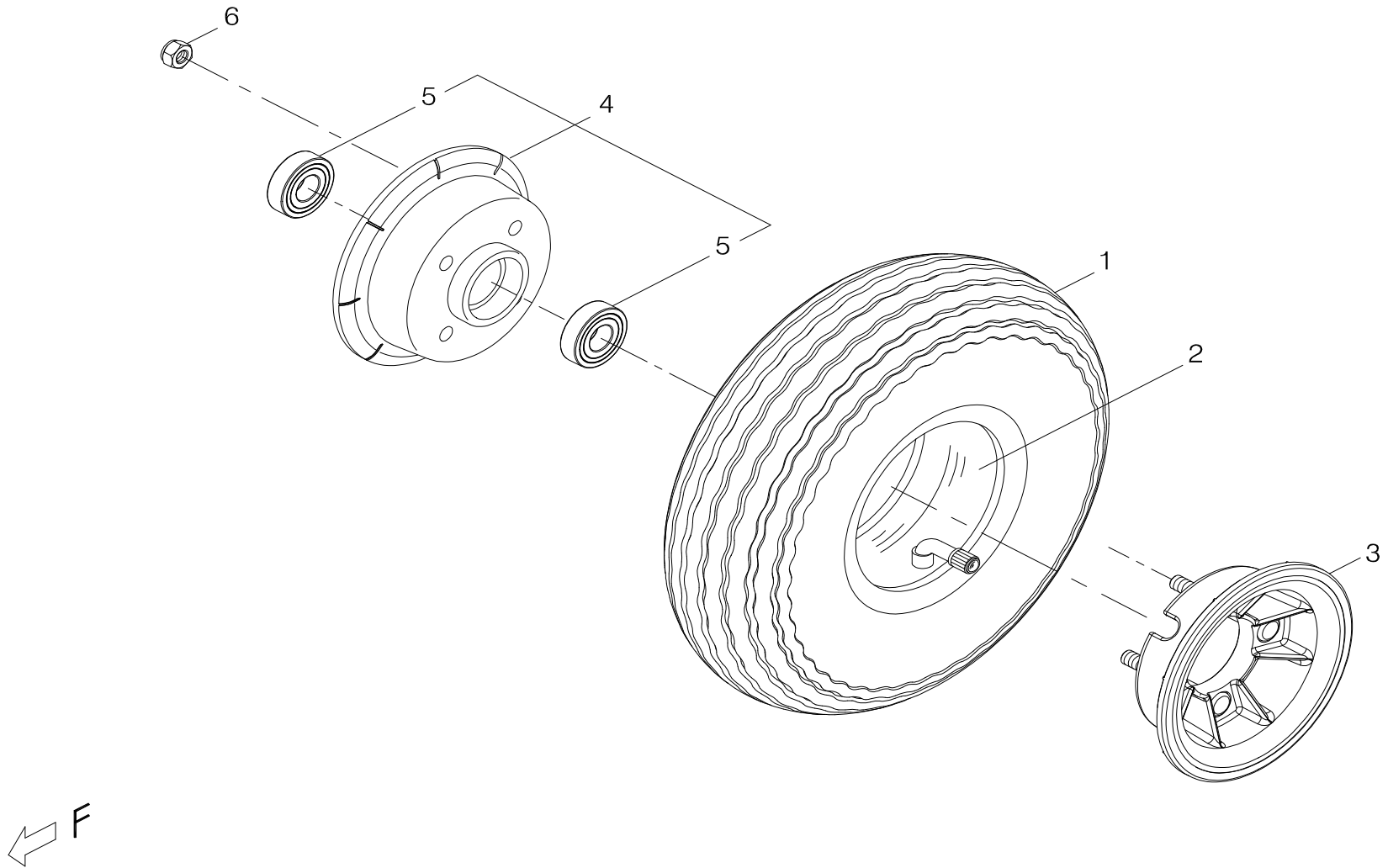
Index NO.	Part NO.	Qty.	Description	Specification	Remark
4	105201-67705-12	2	Rear Wheel Assembly	Pneumatic Gray Tire,Silver Rim	後輪總成 PHM/灰胎/388EM 銀灰色鋁圈/充氣(IA)
4-1	205201-88112	1	Gray Tire	260*85,3.00-4,10X3,IA2889	灰胎/260*85 3.00-4 10X3 IA2889
4-2	205102-88102	1	Inner Tube	3.00/4.10/3.50-4,TR-87	內胎(含風嘴蓋)/3.00/4.10/3.50-4 TR-87(IA)
4-3	205109-88100-12-A2-1	1	Aluminum Rim Wheel w/ Bolts	4", T-20L, Silver, A2	外鋁輪圈+螺栓(牙長20L)/4"銀灰(十字型)(A2)(非保稅)
4-4	205205-88100-A3	1	Aluminum Rim Wheel w/ Hub	4", ϕ 17, A3	鋁輪圈+驅動軸套/4"+ ϕ 17(A3)
4-5	5012-08013-200	4	Nyloc Nut	M8*P1.25*13 7.8t,Multicolored Galvanized	尼龍螺帽/M8*P1.25*13邊7.8t (五彩)



INDEX.5

[back to contents](#)

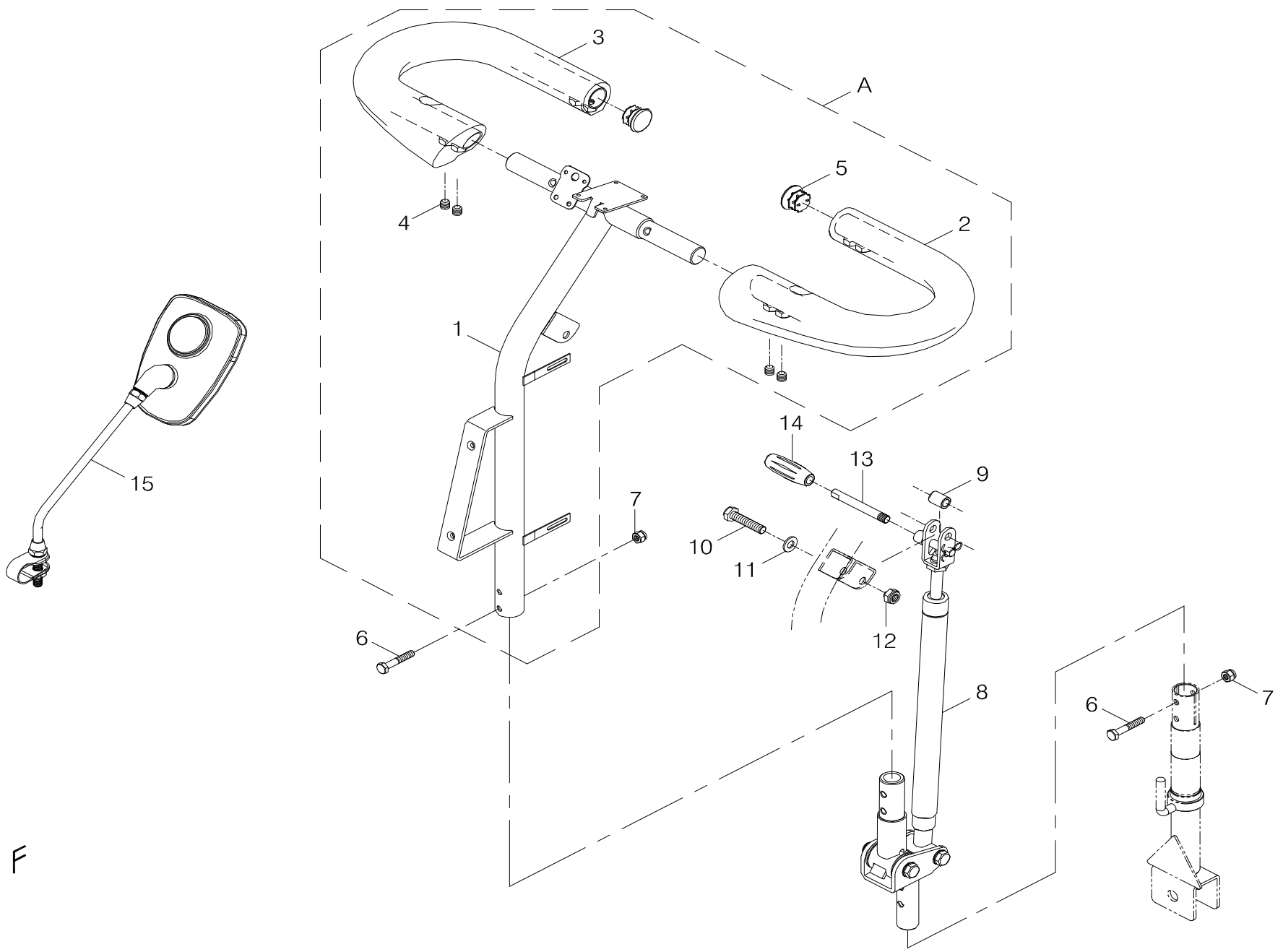
Index NO.	Part NO.	Qty.	Description	Specification	Remark
5-1	101502-77800	1	Steering shaft assembly	778EL	操向桿總成加工/778EL
5-A	101501-77800	1	Steering shaft assembly	778EL	操向桿總成/778EL
5-B	209929-88100	1	Vinyl cover	Black, ϕ 6.8*35L	膠套(黑)/ ϕ 6.8*35L
			-----*-----		
5-2	201401-88200	1	Bearing bushing	ϕ 27	軸承座/ ϕ 27
5-3	201402-88200	2	Steering Bearings	5/32*16	軸承/5/32"*16
5-4	201403-88200	1	Bearing housing	ϕ 30	珠碗(下)/ ϕ 30
5-5	201404-88200	1	Bearing housing	ϕ 30	珠碗(上)/ ϕ 30
5-6	201405-88200	1	Bearing bushing	Large octangle	軸承襯套/大八角
5-7	201406-88200	1	Steering Head Nut	Dia 22.2	軸承固定螺帽/ ϕ 22.2
			-----*-----		
5-8	4003048-08	1	Front fork shaft	C48-8,M12*P1.25*46L,Multicolor	前叉軸 / C48-8 (M12*P1.25*46L)
5-9	4003281-01	1	Front Axle	C281-1	前輪橫軸/C281-1
5-10	5012-12019-210	1	Nylon lock nut	M12*P1.25*19,Multicolored Galvanized	尼龍螺帽/M12*P1.25*19邊(五彩)
			-----*-----		
5-11	-----	REF	Front wheel assembly		前輪總成
5-12	4001329-00	2	Flat Washer	A329	平墊圈/A329
5-13	5022-08013-210	2	Spring washer	ϕ 8*13,Multicolored Galvanized	彈簧墊圈/ ϕ 8*13(五彩)
5-14	5001-08020-440	2	Hex Head Bolt	M8*P1.25*20L,SUS304	外六角鋼栓/M8*P1.25*20L SUS304
			-----*-----		
5-15	301123-05	1	Warning sticker	N23-5,Small	三角型警告貼紙/N23-5(小)
5-16	301174-09	1	Warning sticker	N74-9	警告專利貼紙/N74-9



INDEX.6

[back to contents](#)

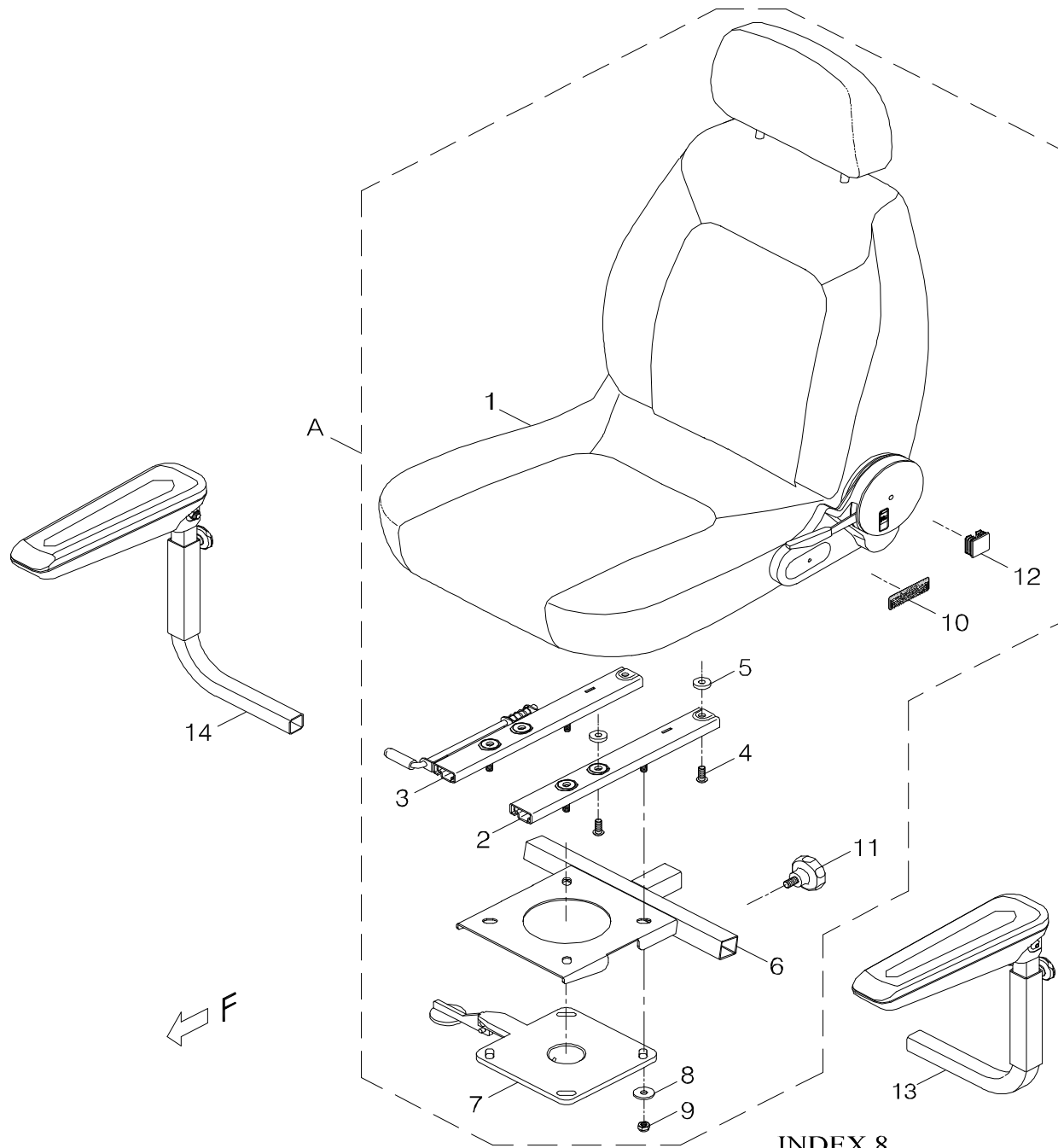
Index NO.	Part NO.	Qty.	Description	Specification	Remark
6	105101-66303-12	2	Front Wheel Assembly	778L,Pneumatic Gray Tire,Silver Rim	前輪總成(灰胎)/778L 銀灰色鋁圈/充氣A2
6-1	205101-78107-1	1	Gray Tire	2.80/2.50-4, IA2802	灰胎/2.80/2.50-4 IA2802(非保稅)
6-2	205202-77104	1	Inner Tube	2.80/2.50-4,TR-87	內胎/2.80/2.50-4 TR-87(含風嘴蓋)IA
6-3	205109-88100-12-A2-1	1	Aluminum Rim Wheel w/ Bolts	4", T-20L, Silver, A2	外鋁輪圈+螺栓(牙長20L)/4"銀灰(十字型)(A2)(非保稅)
6-4	205105-88101-A2	1	Aluminum Rim Wheel w/ Bearing 6202zz	4" , A2	鋁輪圈+彈子盤軸套/4"+6202zz(A2)
6-5	-----	REF(2)	Ball bearing	#6202zz	滾珠軸承/#6202zz
6-6	5012-08013-200	4	Nyloc Nut	M8*P1.25*13 7.8t,Multicolored Galvanized	尼龍螺帽/M8*P1.25*13邊7.8t(五彩)



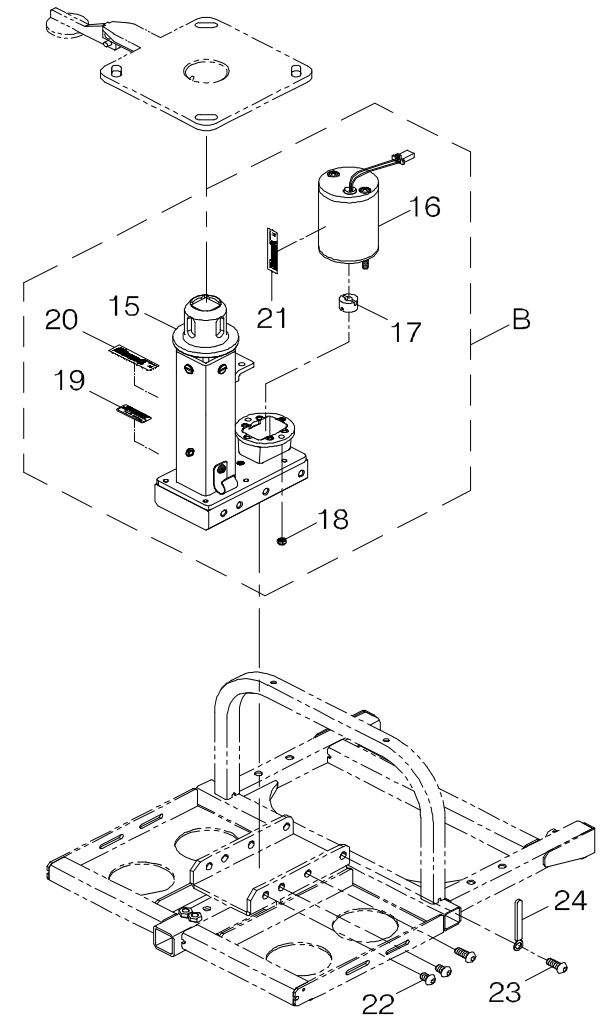
INDEX.7

[back to contents](#)

Index NO.	Part NO.	Qty.	Description	Specification	Remark
7-A	101104-67503	1	C-type Handle Bar w/ Hand Grip	889SL, for Gas Lift	C型把手+披覆加工(氣壓棒)/889SL
7-1	101101-89101	1	Loop Handle Frame	C-Bar	把手架/C把
7-2	101906-67500	1	Loop Handle Bar w/ Rubber Forming	Left, 889SL/XLSN, C-Bar	環把套管+披覆加工-左/889SL/XLSN(C把)
7-3	101907-67500	1	Loop Handle Bar w/ Rubber Forming	Right, 889SL/XLSN, C-Bar	環把套管+披覆加工-右/889SL/XLSN(C把)
7-4	5004-08008-440	4	Set Screw	M8*1.25*8L, SUS	無頭螺絲(耐落)/M8*1.25*8L (SUS)
7-5	201105-78701	2	Plug Cap for Handle Bar	CF25-2	握把管塞/CF25-2
			-----*-----		
7-6	5001-06035-220	4	Hex cap screw	M6*P1.0*35L,20L,Multicolored Galvanized	外六角鋼絲(12.9級)/M6*P1.0*35L 牙長20L (五彩)
7-7	5012-06010-201	4	Nylon lock nut	M6*P1.0*10*8t,Multicolored Galvanized	尼龍螺帽/M6*P1.0*10邊*8t (五彩)
			-----*-----		
7-8	800907-881-13	1	Handle Bar Joint Base Assembly	w/ Gas Lift	把手連接座含氣壓棒模組/出配件用
7-9	4003264-61	1	Spacer	C264-61	間隔圈/C264-61
7-10	5001-08040-710	1	Hex Head Screw	M8*P1.25*40L, Black Galvanized	外六角螺絲/M8*P1.25*40L (鍍黑鋅)
7-11	5021-08016-710	1	Flat Washer	8*16*1.5T,Black Galvanized	平墊圈/φ8*φ16*1.5t(鍍黑鋅)
7-12	5012-08013-700	1	Nyloc Nut	M8*P1.25*13,7.8t,Black Galvanized	尼龍螺帽/M8*P1.25*13邊7.8t(鍍黑鋅)
7-13	202912-89102	1	Depressing Lever	66L, for C-Bar	壓桿/66L(C把用)
7-14	209929-88801	1	Rubber Cap for Lever of Sliding Seat	ID φ 8.1*50.7L, Black	膠套(滑道拉柄用)/ID φ 8.1*50.7L(黑色)
			-----*-----		
7-15	202908-88102-A3	2	Back Mirror for T-bar	KS-800810, A3	照後鏡(含白鐵束套)/KS-800810(T把用)(A3)



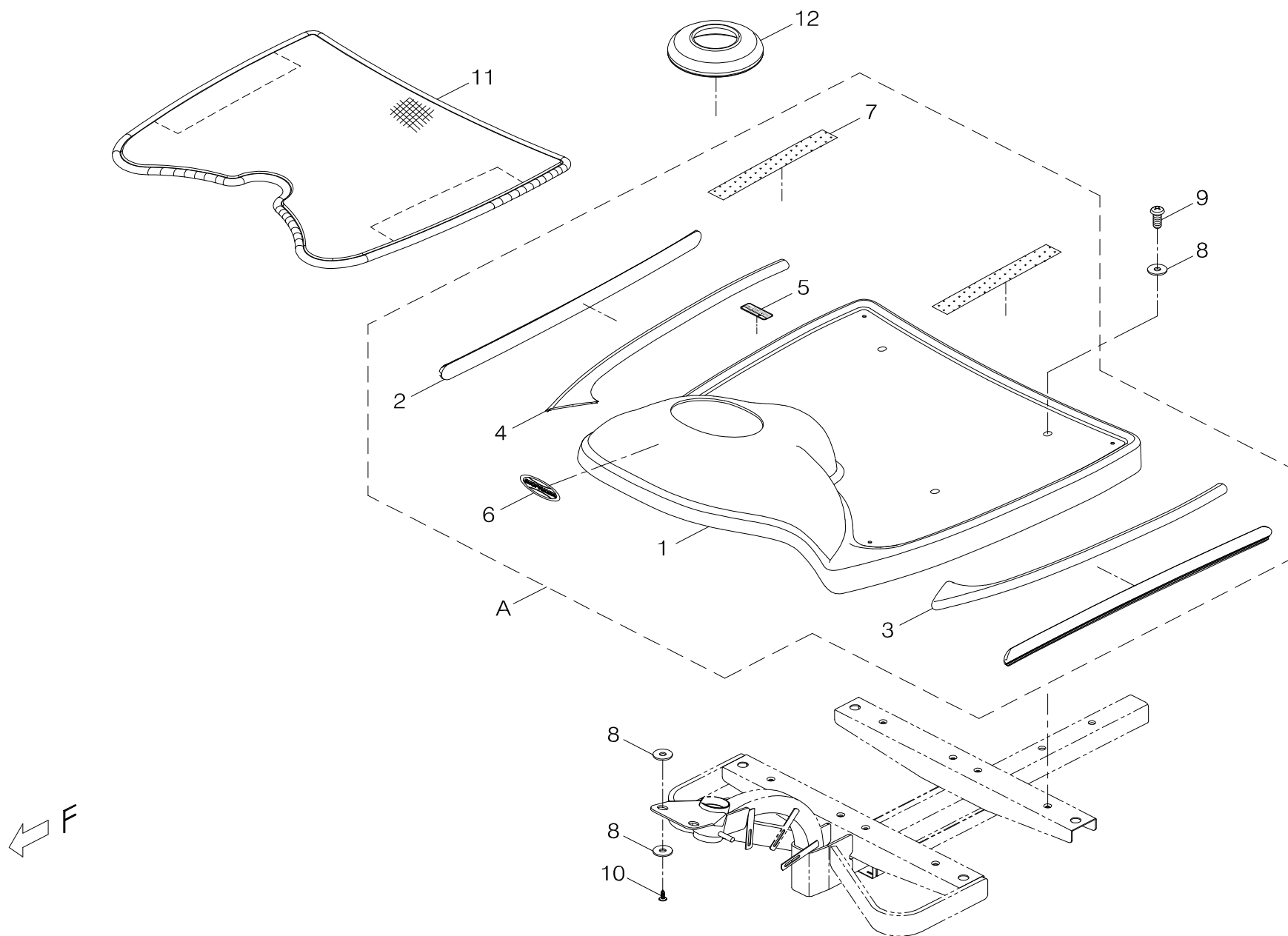
INDEX.8



[back to contents](#)

Index NO.	Part NO.	Qty.	Description	Specification	Remark
8-A	800317-778-14	1	Black Vinyl Deluxe Seat Assembly	w/ Slide & Reclining to 112 Degrees	大折疊椅模組+滑道(778EL)/黑色(包覆)低背皮椅6段112度後傾
8-1	104021-00103	1	Black Vinyl Captain Seat	18.5"x17.5",w/Reclining 112,Headrest	低背皮椅6段112度後傾DL有頭枕/黑色(包覆)(18.5*17.5)
8-2	204901-88803-A2	1	Sliding Rail	Left, #5, A2	滑道(左)/#5(A2)
8-3	204902-88803-A2	1	Sliding Rail	Right, #5, A2	滑道(右)/#5(A2)
8-4	5003-08020-221	4	Allen Button Head Screw	M8*P1.25*20L,Multicolored Galvanized	半圓頭內六角鋼栓10.9級/M8*P1.25*20L(防鬆全支)五彩
8-5	5021-08022-211	4	Flat Washer	Dia 8*22*5t,Multicolored Galvanized	平墊圈/φ8*22*5t(五彩)
8-6	204506-66601	1	Seat Adapter	#2	座台/#2
8-7	204507-66103	1	Swivel Seat Stand	#4	旋轉台(鋁)#4
8-8	4001428-00	4	Flat Washer	A428, φ 8.4*26*3t	平墊圈/A428(φ8.4*26*3t)
8-9	5012-08013-200	4	Nyloc Nut	M8*P1.25*13 7.8t,Multicolored Galvanized	尼龍螺帽/M8*P1.25*13邊7.8t(五彩)
8-10	301174-31	1	Caution Sticker	N74-31	警告貼紙/N74-31
8-11	5008-10020-212-A2	2	Tighten Knob	M10*17L,Multicolored Galvanized,A2	星型螺栓/M10*17L全牙,五彩(A2)
8-12	209931-00105	2	Square Plug	30MM*30MM,2T	方形管塞/30MM*30MM 2T管用
			-----*-----		
8-13	104300-70800	1	Armrest Assembly	888SLN, Left	扶手總成(左)/888SLN
8-14	104400-70800	1	Armrest Assembly	888SLN, Right	扶手總成(右)/888SLN
			-----*-----		
8-B	100108-77800	1	Motor & electric seat lift assembly	7LM,778EL/888EL,L type	馬達升降器總成(L型)/7LM+(778EL/888EL)
8-15	104902-77800	1	Electric seat lift	778EL,888EL	升降器總成(L型)/778EL/888EL
8-16	100201-77103	1	Motor Assembly	LM	馬達/LM
8-17	200920-78700	1	Connector	φ 8*20*13L	連接器/φ8*20*13L
8-18	5012-05008-200	2	Nylon Lock Nut	M5*P0.8*8,Multicolored Galvanized	尼龍螺帽/M5*P0.8*8邊(五彩)
8-19	301179-04	1	Trademark Sticker	N79-4	指示貼紙(40*15.5)/N79-4(Powered by PIHSIANG)
8-20	-----	REF(1)	DECAL		條碼貼紙

Index NO.	Part NO.	Qty.	Description	Specification	Remark
8-21	-----	REF(1)	DECAL		條碼貼紙
			-----*-----		
8-22	5003-08012-220	4	ALLEN BUTTON HEAD SCREW	M8*P1.25*12L,Multicolored Galvanized	半圓頭內六角鋼栓/M8*P1.25*12L (五彩)
8-23	5003-08020-220	4	ALLEN BUTTON HEAD SCREW	M8*P1.25*20L,Multicolored Galvanized	半圓頭內六角鋼栓/M8*P1.25*20L(五彩)10.9級
8-24	4001393-00	1	Hook Plate	A393(φ 8.2)	電線勾片/A393(φ 8.2)

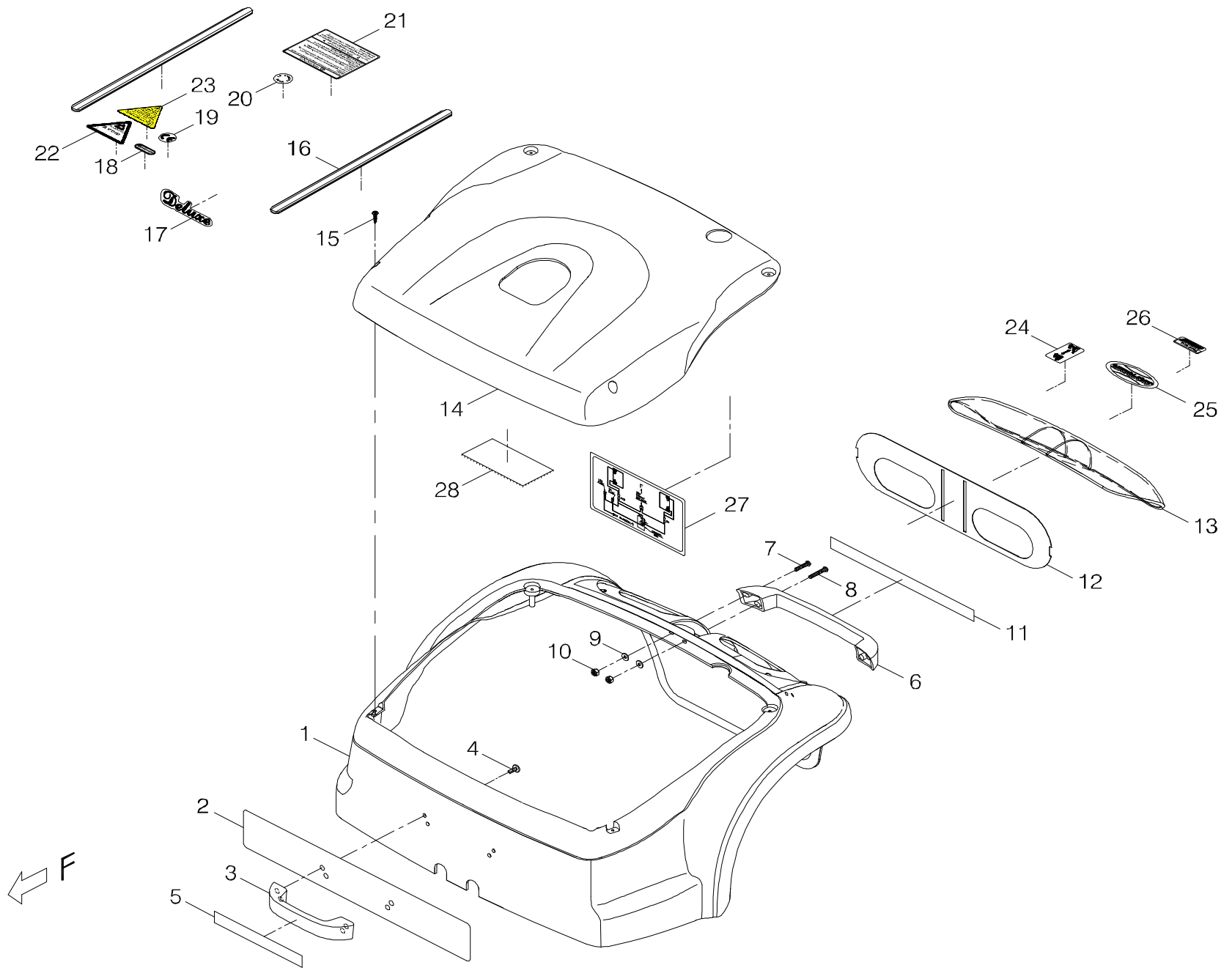


INDEX.9

[back to contents](#)

Index NO.	Part NO.	Qty.	Description	Specification	Remark
9-A	103102-77800-22	1	Front chassis cover assembly	w/decal,TE-778EL,Burgundy	前蓋板總成(含貼紙)/TE-778EL 棗紅
9-1	103101-77800-22	1	Front chassis cover assembly	778EL,Burgundy	前蓋板總成/778EL 棗紅
9-2	203102-77800	2	Striped tape	Front,24.5W*430L	飾條(前)/24.5W*430L
9-3	203501-77800	1	Protect cover	L,778EL	前蓋板護片(左)/ 778EL
9-4	203502-77800	1	Protect cover	R,778EL	前蓋板護片(右)/ 778EL
9-5	301127-03	1	Front chassis cover sticker	N27-3	前蓋貼紙/N27-3
9-6	301217-13-A2	1	Trademark Decal, SHOPRIDER	T17-13-A2, 63.7*26	商標貼紙/T17-13-A2 (SHOPRIDER) 63.7*26
9-7	203103-66500	2	Velcro	25W*25M,Hook	自黏扣帶(勾面)/25W*25M
			-----*-----		
9-8	5021-06018-440	8	Flat Washer	φ 6*18*1.6t,SUS	平墊圈/φ 6*18*1.6t SUS
9-9	5005-06016-440	4	Philip Cap Head Bolt	M6*P1.0*16L,SUS	十字圓頭螺栓/M6*P1.0*16L SUS
9-10	5006-04016-710	2	Self tapping screw	M4*16L,Black Galvanized	自攻螺栓(十字扁圓頭)/M4*16L(鍍黑鋅)
9-11	209906-77800	1	Carpet	778EL	地毯(加包邊)/ 778EL
9-12	209904-78100	1	Rubber cover	A7	防塵套(後)/A7
			-----*-----		
9-A	103102-77800-12	REF(1)	Front chassis cover assembly	w/decal,TE-778EL,Silver	前蓋板總成(含貼紙)/TE-778EL 銀灰
9-1	103101-77800-12	1	Front chassis cover assembly	778EL,Silver	前蓋板總成/778EL 銀灰
9-2	203102-77800	2	Striped tape	Front,24.5W*430L	飾條(前)/24.5W*430L
9-3	203501-77800	1	Protect cover	L,778EL	前蓋板護片(左)/ 778EL
9-4	203502-77800	1	Protect cover	R,778EL	前蓋板護片(右)/ 778EL
9-5	301127-03	1	Front chassis cover sticker	N27-3	前蓋貼紙/N27-3
9-6	301217-13-A2	1	Trademark Decal, SHOPRIDER	T17-13-A2, 63.7*26	商標貼紙/T17-13-A2 (SHOPRIDER) 63.7*26

Index NO.	Part NO.	Qty.	Description	Specification	Remark
9-7	203103-66500	2	Velcro	25W*25M,Hook	自黏扣帶(勾面)/25W*25M
			----- * -----		
9-A	103102-77800-4A	REF(1)	Front Chassis Cover	w/ Decal, TE-778EL, Blue	前蓋板總成(含貼紙)/TE-778EL 孔雀藍
9-1	103101-77800-4A	1	Front Chassis Cover	778EL, Blue	前蓋板/778EL 孔雀藍
9-2	203102-77800	2	Striped tape	Front,24.5W*430L	飾條(前)/24.5W*430L
9-3	203501-77800	1	Protect cover	L,778EL	前蓋板護片(左)/ 778EL
9-4	203502-77800	1	Protect cover	R,778EL	前蓋板護片(右)/ 778EL
9-5	301127-03	1	Front chassis cover sticker	N27-3	前蓋貼紙/N27-3
9-6	301217-13-A2	1	Trademark Decal, SHOPRIDER	T17-13-A2, 63.7*26	商標貼紙/T17-13-A2 (SHOPRIDER) 63.7*26
9-7	203103-66500	2	Velcro	25W*25M,Hook	自黏扣帶(勾面)/25W*25M



INDEX.10

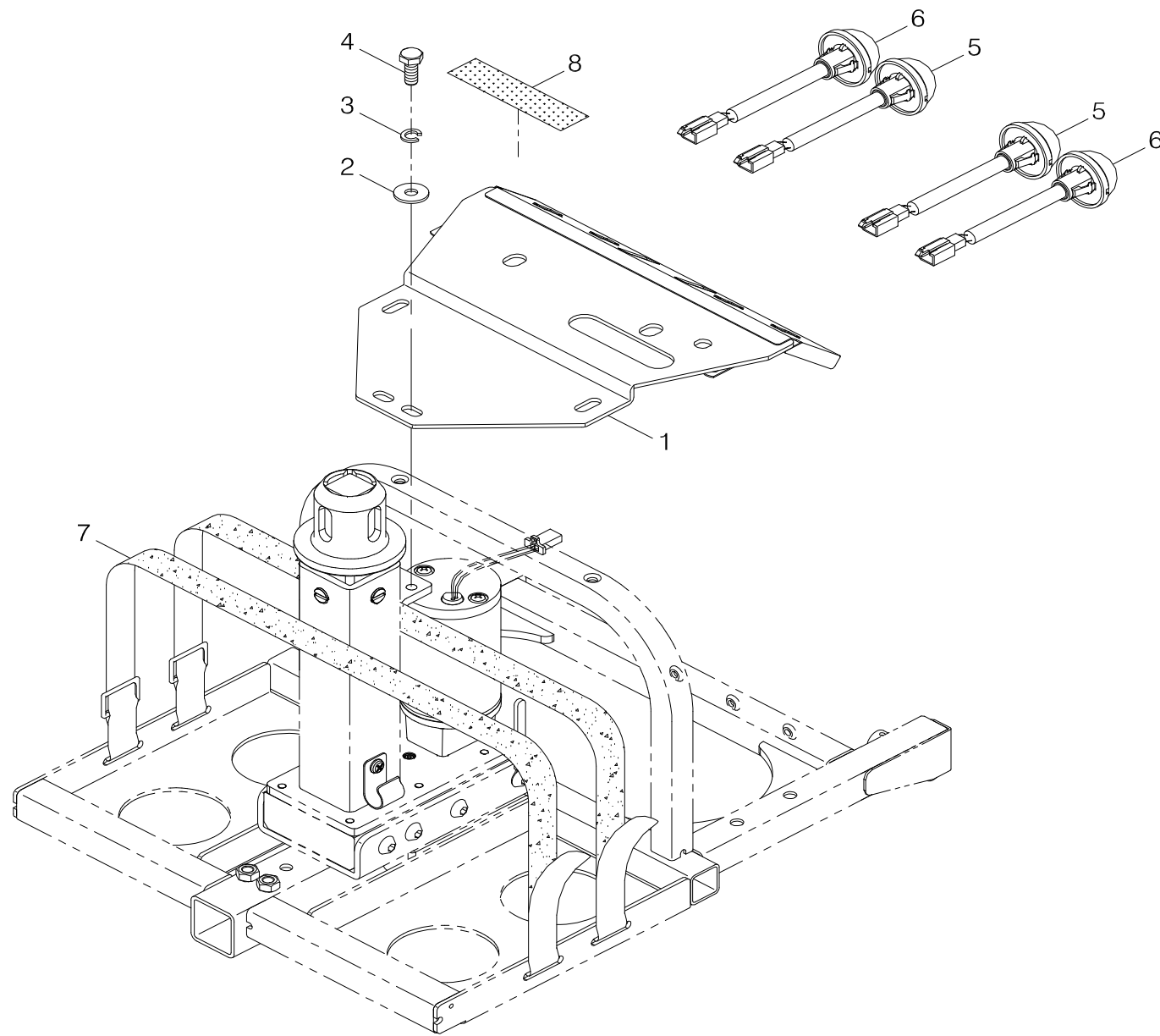
[back to contents](#)

Index NO.	Part NO.	Qty.	Description	Specification	Remark
10	103202-77822-22	1	Rear Chassis Cover Assembly	w/ Decal, 778EL, Burgundy Red	後蓋板總成(含貼紙)格紋/778EL 棗紅(雙色燈罩)
10-1	103201-77800-22-A3	1	Rear chassis cover assembly	778EL/888EL,Burgundy#1	後蓋板總成/778EL/888EL 棗紅#1(A3)
10-2	203203-77802	1	Emblem	Rear, 778EL, 370*60mm	格紋貼紙(後)(加孔)/778EL 370*60mm(銀1.5*1,黑1*1)
10-3	203513-77800	1	Handle hook	778EL,Front	手提把/778EL(前)(射出)
10-4	5006-04012-210	4	Self tapping screw	M4*12L,Multicolored Galvanized	自攻螺絲(鑽尾)/M4*12L (五彩)帶墊
10-5	203203-78703	1	Emblem	18W*142L, for handle of Battery Pack	格紋紙(電池盒手提把)/18W*142L(SL7-4)
10-6	203513-77801	1	Handle hook	778EL,Rear	手提把/778EL(後)
10-7	5005-04020-210	2	Philip Screw	M4*P0.7*20L,Multicolored Galvanized	十字圓頭螺絲/M4*P0.7*20L (五彩)
10-8	5005-04025-210	2	Philip Screw	M4*P0.7*25L,Multicolored Galvanized	十字圓頭螺絲/M4*P0.7*25L (五彩)
10-9	5021-04010-210	4	Flat Washer	φ 4*10*1t,Multicolored Galvanized	平墊圈/φ 4*10*1t (五彩)
10-10	5012-04007-200	4	Nyloc Nut	M4*P0.7*7, Multicolored Galvanized	尼龍螺帽/M4*P0.7*7邊 (五彩)
10-11	203203-78704	1	Checker Pattern Emblem for Handle	18W*233L	格紋紙(手提把)/18W*233L
10-12	203206-77800-A2	1	Reflector	Ivory,778/888EL,2Y2R #1	雷射反光片/778/888EL(2Y2R) #1
10-13	203512-77800-A2	1	Lamp Shade	778EL/888EL,Two-tone	燈罩/778EL/888EL(雙色)
10-14	103207-77800-14	1	Chassis cover assembly	778EL/888EL,Silver	後上蓋總成/778EL/888EL 鐵灰銀
10-15	5006-04016-710	4	Self tapping screw	M4*16L,Black Galvanized	自攻螺絲(十字扁圓頭)/M4*16L(鍍黑鋅)
10-16	203202-77800	2	Striped tape	Rear,14W*290L	飾條(後)/14W*290L
10-17	301206-00	1	Decal	T6,Deluxe	豪華型貼紙/T6 (Deluxe)
10-18	301174-09	1	Warning Sticker	N74-9	警告專利貼紙/N74-9
10-19	301166-03	1	CE Mark Label	N66-3	CE貼紙/N66-3 透黑
10-20	301116-01	1	MIT Sticker	N16-1	MIT貼紙/N16-1
10-21	301174-13	1	Warning sticker	N74-13,A0518,North America	警告貼紙/N74-13(A0518) 美規
10-22	301123-07	1	Warning sticker	N23-7,Large	三角型警告貼紙/N23-7 (大)
10-23	301123-23	1	Warning sticker	N23-23	三角型警告貼紙/N23-23

Index NO.	Part NO.	Qty.	Description	Specification	Remark
10-24	301187-11	1	ON-BRAKE-OFF Label	N87-11	ON-BRAKE-OFF圖示貼紙/N87-11 (透白)(代步車用)
10-25	301217-05	1	Trademark Decal, SHOPRIDER	T17-5,78.5*32	商標貼紙/T17-5 (SHOPRIDER) 78.5*32
10-26	301179-04	1	Trademark Sticker	N79-4	指示貼紙(40*15.5)/N79-4(Powered by PIHSIANG)
10-27	301153-18	1	Battery Wiring Diagram Sticker	N53-18, 30A/10A	指示貼紙(線路圖)/N53-18 (30A/10A)
10-28	203103-66400	1	Velcro	50W*25M,Loop	自黏扣帶(毛面)/50W*25M
			----- * -----		
10	103202-77822-12	REF(1)	Rear Chassis Cover Assembly	w/ Decal, 778EL, Silver	後蓋板總成(含貼紙)格紋/778EL 銀灰(雙色燈罩)
10-1	103201-77800-12-A3	1	Rear chassis cover assembly	778EL/888EL,Silver#1	後蓋板總成/778EL/888EL 銀灰#1(A3)
10-2	203203-77802	1	Emblem	Rear, 778EL, 370*60mm	格紋貼紙(後)(加孔)/778EL 370*60mm(銀1.5*1,黑1*1)
10-3	203513-77800	1	Handle hook	778EL,Front	手提把/778EL(前)(射出)
10-4	5006-04012-210	4	Self tapping screw	M4*12L,Multicolored Galvanized	自攻螺絲(鑽尾)/M4*12L (五彩)帶墊
10-5	203203-78703	1	Emblem	18W*142L, for handle of Battery Pack	格紋紙(電池盒手提把)/18W*142L(SL7-4)
10-6	203513-77801	1	Handle hook	778EL,Rear	手提把/778EL(後)
10-7	5005-04020-210	2	Philip Screw	M4*P0.7*20L,Multicolored Galvanized	十字圓頭螺絲/M4*P0.7*20L (五彩)
10-8	5005-04025-210	2	Philip Screw	M4*P0.7*25L,Multicolored Galvanized	十字圓頭螺絲/M4*P0.7*25L (五彩)
10-9	5021-04010-210	4	Flat Washer	φ 4*10*1t,Multicolored Galvanized	平墊圈/φ 4*10*1t (五彩)
10-10	5012-04007-200	4	Nyloc Nut	M4*P0.7*7, Multicolored Galvanized	尼龍螺帽/M4*P0.7*7邊 (五彩)
10-11	203203-78704	1	Checker Pattern Emblem for Handle	18W*233L	格紋紙(手提把)/18W*233L
10-12	203206-77800-A2	1	Reflector	Ivory,778/888EL,2Y2R #1	雷射反光片/778/888EL(2Y2R) #1
10-13	203512-77800-A2	1	Lamp Shade	778EL/888EL,Two-tone	燈罩/778EL/888EL(雙色)
10-14	203207-77800-50	1	Rear chassis cover	778EL,Black	後上蓋板/778EL(黑)
10-15	5006-04016-710	4	Self tapping screw	M4*16L,Black Galvanized	自攻螺絲(十字扁圓頭)/M4*16L(鍍黑鋅)

Index NO.	Part NO.	Qty.	Description	Specification	Remark
10-16	203202-77800	2	Striped tape	Rear,14W*290L	飾條(後)/14W*290L
10-17	301206-00	1	Decal	T6,Deluxe	豪華型貼紙/T6 (Deluxe)
10-18	301174-09	1	Warning Sticker	N74-9	警告專利貼紙/N74-9
10-19	301166-02	1	CE Mark Label	N66-2, White Sign	CE貼紙/N66-2 透白
10-20	301116-01	1	MIT Sticker	N16-1	MIT貼紙/N16-1
10-21	301174-13	1	Warning sticker	N74-13,A0518,North America	警告貼紙/N74-13(A0518) 美規
10-22	301123-07	1	Warning sticker	N23-7,Large	三角型警告貼紙/N23-7 (大)
10-23	301123-23	1	Warning sticker	N23-23	三角型警告貼紙/N23-23
10-24	301187-10	1	ON-BRAKE-OFF LABEL	N87-10	ON-BRAKE-OFF圖示貼紙/N87-10 (透黑)(代步車用)
10-25	301217-05	1	Trademark Decal, SHOPRIDER	T17-5,78.5*32	商標貼紙/T17-5 (SHOPRIDER) 78.5*32
10-26	301179-04	1	Trademark Sticker	N79-4	指示貼紙(40*15.5)/N79-4(Powered by PIHSIANG)
10-27	301153-18	1	Battery Wiring Diagram Sticker	N53-18, 30A/10A	指示貼紙(線路圖)/N53-18 (30A/10A)
10-28	203103-66400	1	Velcro	50W*25M,Loop	自黏扣帶(毛面)/50W*25M
			-----*-----		
10	103202-77822-4A	REF(1)	Rear Chassis Cover Assembly	w/ Decal, 778EL, Blue	後蓋板總成(含貼紙)格紋/778EL 孔雀藍(雙色燈罩)
10-1	103201-77800-4A-A3	1	Rear Chassis Cover	778EL/888EL, Blue#1, A3	後蓋板/778EL/888EL 孔雀藍#1(A3)
10-2	203203-77802	1	Emblem	Rear, 778EL, 370*60mm	格紋貼紙(後)(加孔)/778EL 370*60mm(銀1.5*1,黑1*1)
10-3	203513-77800	1	Handle hook	778EL,Front	手提把/778EL(前)(射出)
10-4	5006-04012-210	4	Self tapping screw	M4*12L,Multicolored Galvanized	自攻螺絲(鑽尾)/M4*12L (五彩)帶墊
10-5	203203-78703	1	Emblem	18W*142L, for handle of Battery Pack	格紋紙(電池盒手提把)/18W*142L(SL7-4)
10-6	203513-77801	1	Handle hook	778EL,Rear	手提把/778EL(後)
10-7	5005-04020-210	2	Philip Screw	M4*P0.7*20L,Multicolored Galvanized	十字圓頭螺絲/M4*P0.7*20L (五彩)

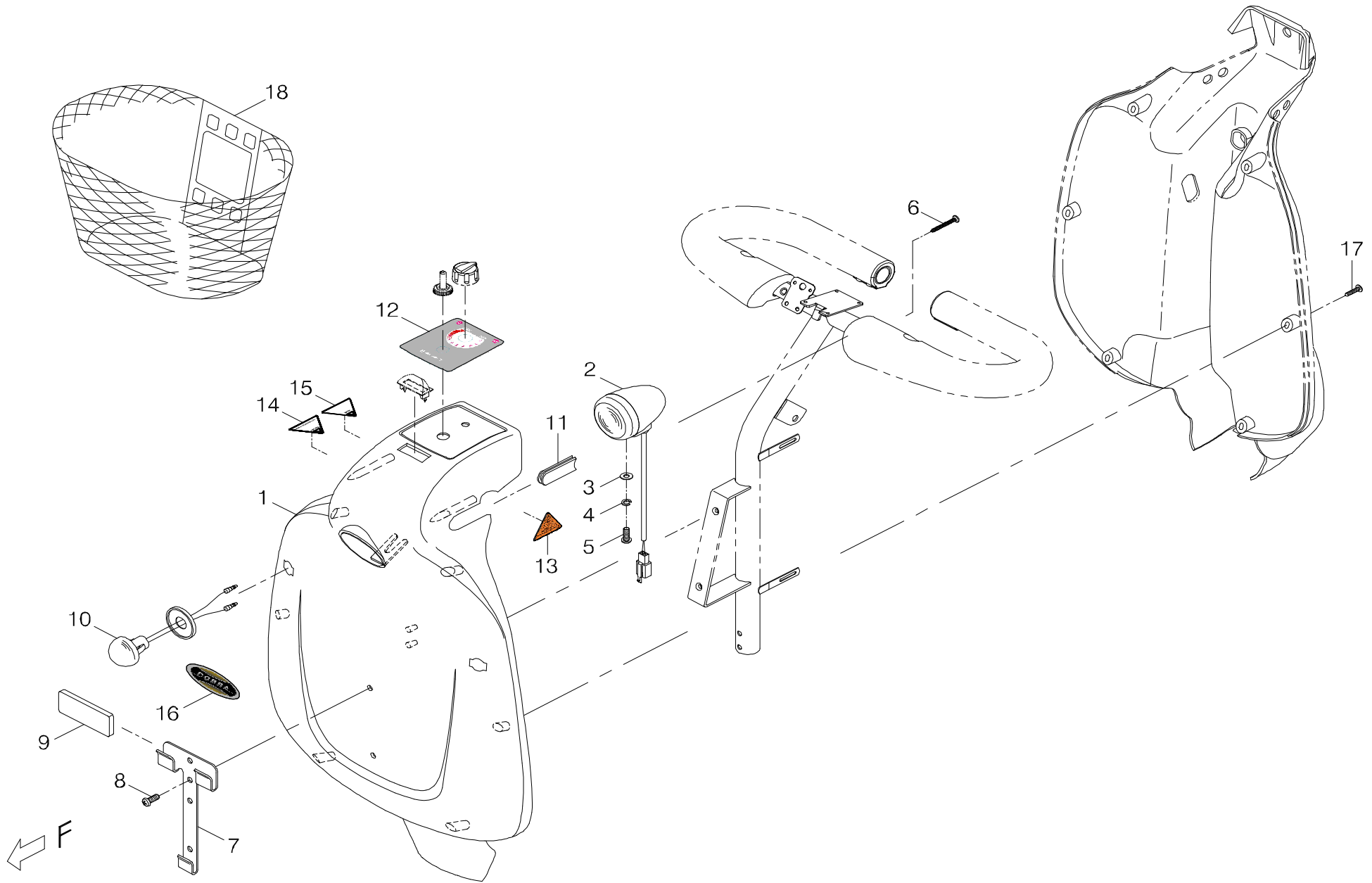
Index NO.	Part NO.	Qty.	Description	Specification	Remark
10-8	5005-04025-210	2	Philip Screw	M4*P0.7*25L,Multicolored Galvanized	十字圓頭螺栓/M4*P0.7*25L (五彩)
10-9	5021-04010-210	4	Flat Washer	φ 4*10*1t,Multicolored Galvanized	平墊圈/φ 4*10*1t (五彩)
10-10	5012-04007-200	4	Nyloc Nut	M4*P0.7*7, Multicolored Galvanized	尼龍螺帽/M4*P0.7*7邊 (五彩)
10-11	203203-78704	1	Checker Pattern Emblem for Handle	18W*233L	格紋紙(手提把)/18W*233L
10-12	203206-77800-A2	1	Reflector	Ivory,778/888EL,2Y2R #1	雷射反光片/778/888EL(2Y2R) #1
10-13	203512-77800-A2	1	Lamp Shade	778EL/888EL,Two-tone	燈罩/778EL/888EL(雙色)
10-14	103207-77800-14	1	Chassis cover assembly	778EL/888EL,Silver	後上蓋總成/778EL/888EL 鐵灰銀
10-15	5006-04016-710	4	Self tapping screw	M4*16L,Black Galvanized	自攻螺絲(十字扁圓頭)/M4*16L(鍍黑鋅)
10-16	203202-77800	2	Striped tape	Rear,14W*290L	飾條(後)/14W*290L
10-17	301206-00	1	Decal	T6,Deluxe	豪華型貼紙/T6 (Deluxe)
10-18	301174-09	1	Warning Sticker	N74-9	警告專利貼紙/N74-9
10-19	301166-03	1	CE Mark Label	N66-3	CE貼紙/N66-3 透黑
10-20	301116-01	1	MIT Sticker	N16-1	MIT貼紙/N16-1
10-21	301174-13	1	Warning sticker	N74-13,A0518,North America	警告貼紙/N74-13(A0518) 美規
10-22	301123-07	1	Warning sticker	N23-7,Large	三角型警告貼紙/N23-7 (大)
10-23	301123-23	1	Warning sticker	N23-23	三角型警告貼紙/N23-23
10-24	301187-11	1	ON-BRAKE-OFF Label	N87-11	ON-BRAKE-OFF圖示貼紙/N87-11 (透白)(代步車用)
10-25	301217-05	1	Trademark Decal, SHOPRIDER	T17-5,78.5*32	商標貼紙/T17-5 (SHOPRIDER) 78.5*32
10-26	301179-04	1	Trademark Sticker	N79-4	指示貼紙(40*15.5)/N79-4(Powered by PIHSIANG)
10-27	301153-18	1	Battery Wiring Diagram Sticker	N53-18, 30A/10A	指示貼紙(線路圖)/N53-18 (30A/10A)
10-28	203103-66400	1	Velcro	50W*25M,Loop	自黏扣帶(毛面)/50W*25M



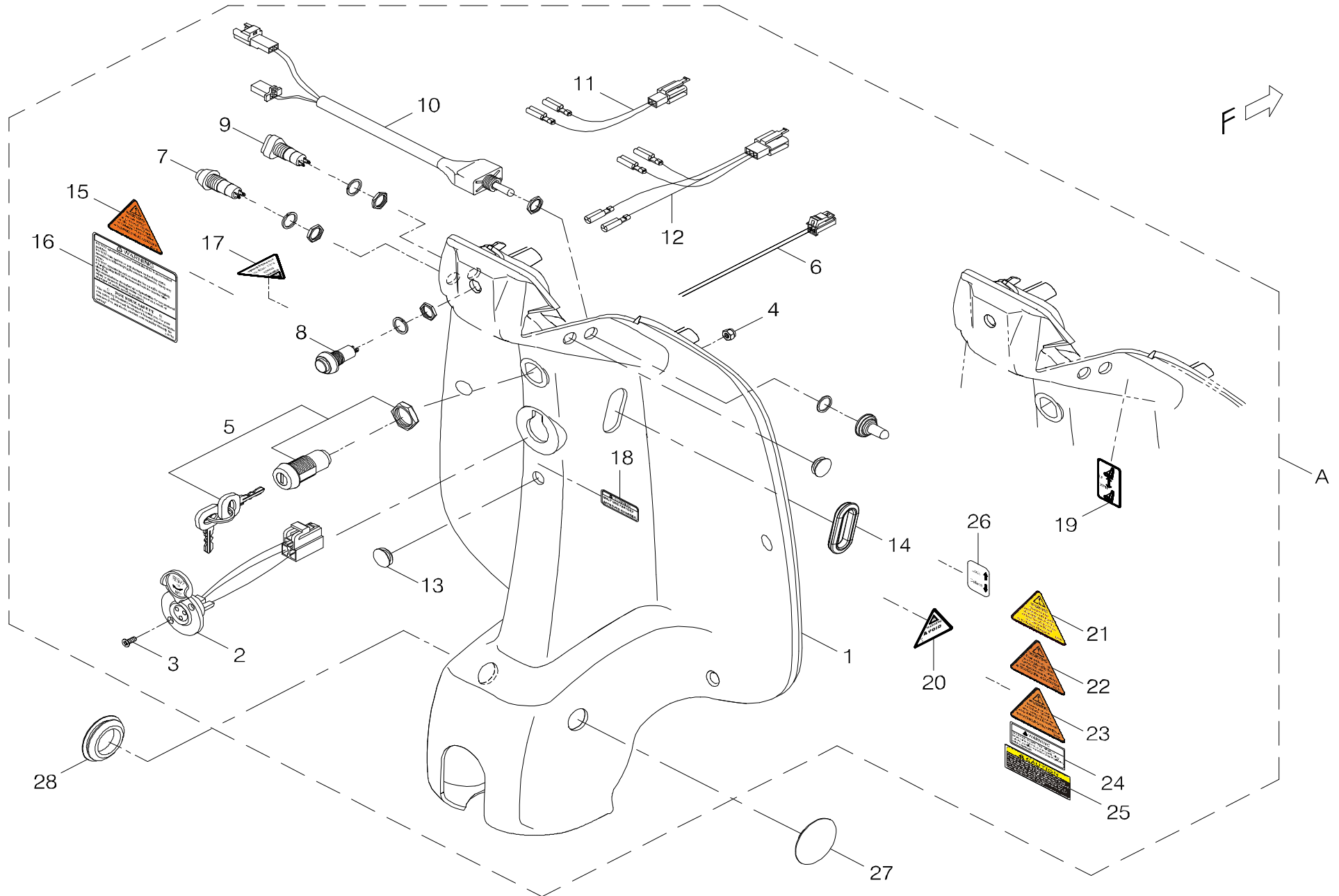
INDEX.11

[back to contents](#)

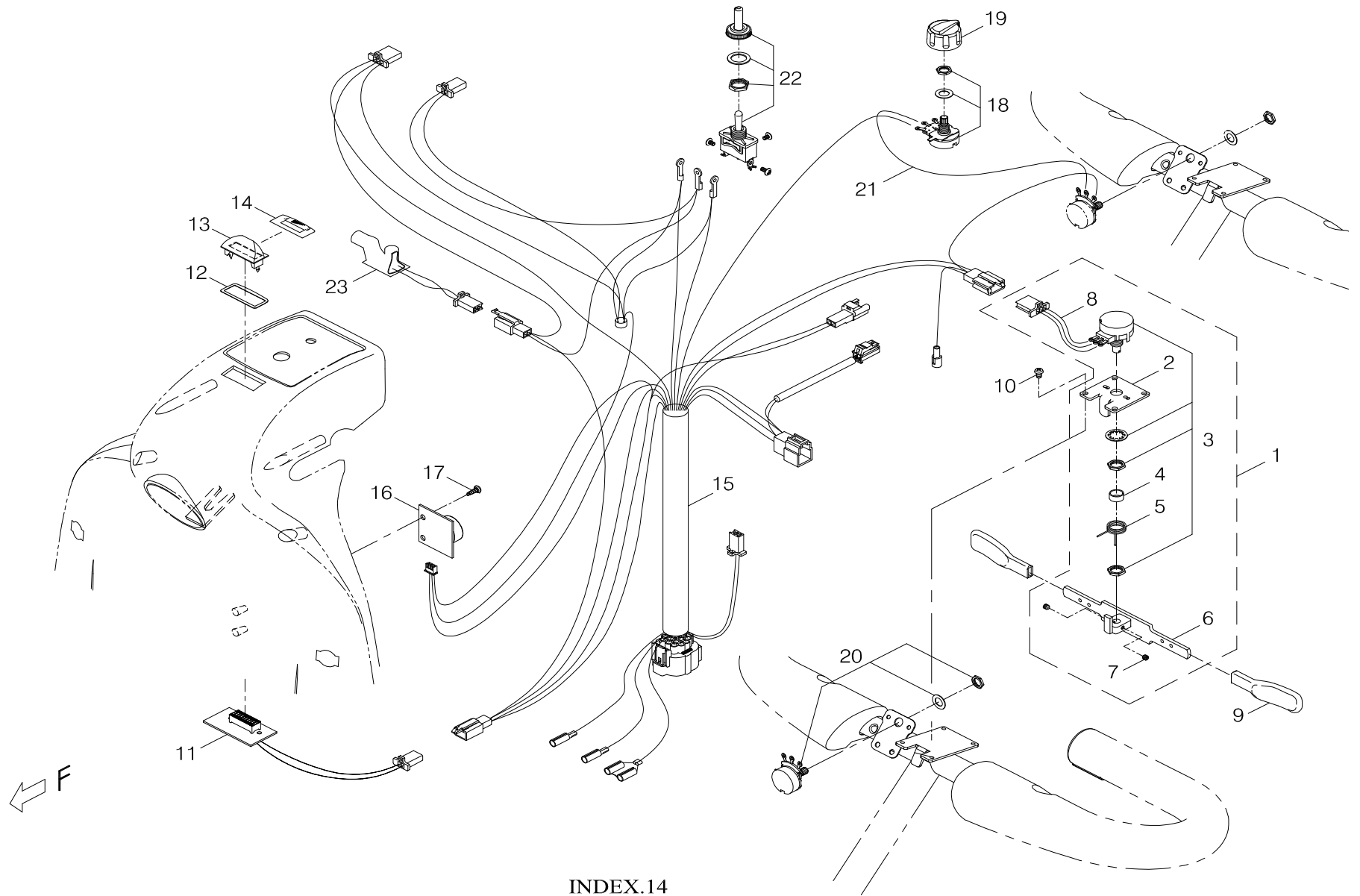
Index NO.	Part NO.	Qty.	Description	Specification	Remark
11	-----		Full light assembly		全燈總成
11-1	202936-77800	1	Tail light/square light fixing bracket	778EL/888EL	尾燈/方向燈固定座/778EL/888EL
11-2	5021-08022-210	4	Flat Washer	ϕ 8*22*2t,Multicolored Galvanized	平墊圈/ϕ 8*22*2t (五彩)
11-3	5022-08013-210	4	Spring washer	ϕ 8*13,Multicolored Galvanized	彈簧墊圈/ϕ 8*13 (五彩)
11-4	5001-08016-210	4	Hex head screw	M8*P1.25*16L,Multicolored Galvanized	外六角螺栓/M8*P1.25*16L (五彩)
11-5	108102-67101C	2	Taillight Set	Round/Plug, Red	尾燈總成/圓型/插頭(紅色)(HDY001)
11-6	108103-67101-A3	2	Winker/Indicator	Round/Plug, Amber, FUAN 0054, A3	方向燈/圓型/插頭(琥珀色)FUAN 0054(A3)
11-7	209920-77800	2	Battert Strap	25mmW*20A*75B cm	電瓶固定帶(長)/25mmW*20A*75B cm
11-8	203103-66500	1	Velcro	25W*25M,Hook	自黏扣帶(勾面)/25W*25M



Index NO.	Part NO.	Qty.	Description	Specification	Remark
12	-----		Handle bar cover assembly		把手蓋總成
12-1	103301-77800-22	1	Front tiller cover assembly	778EL,Burgundy	把手上蓋總成/778EL 棗紅
12-2	108101-66801	1	Headlight	F3C,RR,FUAN 0052	大燈/F3C(RR)FUAN 0052
12-3	5021-06013-210	1	Flat Washer	φ 6*13*1t,Multicolored Galvanized	平墊圈/φ 6*13*1t (五彩)
12-4	5022-06010-210	1	Spring Washer	φ 6*10,Multicolored Galvanized	彈簧墊圈/φ 6*10 (五彩)
12-5	5005-06016-210	1	Screw	M6*P1.0*15~16L,Multicolored Galvanize	十字圓頭螺栓/M6*P1.0*15~16L (五彩)
			-----*-----		
12-6	5006-04038-310	2	Self tapping screw	M4*38L,Black	自攻螺栓(大扁頭)/M4*38L (黑)
12-7	4001151-02	1	Basket Holder	A151-2	籃子掛勾/A151-2 (電著)
12-8	5005-06016-440	2	Philip Cap Head Bolt	M6*P1.0*16L,SUS	十字圓頭螺栓/M6*P1.0*16L SUS
12-9	301307-00	1	Sponge Sticker	75*30*6t	海綿貼紙/75*30*6t
			-----*-----		
12-10	108103-88103-A2	2	Winker/Indicator	Round, Amber, FUAN 0054, A2	方向燈/圓型(琥珀色)FUAN 0054(A2)
12-11	209902-77100	1	Rubber cover		把手蓋防塵套
12-12	301201-09	1	Facia Decal	T1-9, w/ Carbon-fiberlike Background	上控制面板貼紙/T1-9(格紋)
12-13	301123-17	1	Warning Sticker	N23-17	三角型警告貼紙/N23-17(小)
12-14	301123-21-A2	1	Warning Sticker	N23-21-A2	三角型警告貼紙/N23-21-A2(小)
12-15	301123-30-A2	1	Note Sticker	N23-30-A2, for Sleeping Mode	三角型注意貼紙/N23-30-A2
12-16	301213-24	1	Model Decal, Cobra	T13-24,CA01-778EL	車型貼紙(Cobra)/T13-24,CA01-778EL
			-----*-----		
12-17	5006-04020-710	6	Self tapping screw	M4*20L,Black Galvanized	自攻螺栓/M4*20L(鍍黑鋅)
12-18	209916-88100-A2C	1	Basket	103B-2	籃子/103B-2
			-----*-----		



Index NO.	Part NO.	Qty.	Description	Specification	Remark
13-A	103403-77802-50	1	Rear tiller cover assembly	778EL/888EL,C-Tiller	把手下蓋總成(全燈)(氣壓棒)/778EL/888EL(C型)有升降器
13-1	203401-77801-50	1	Tiller Rear Cover, for C-Bar	Black, w/ Hole	把手下蓋(C把)/黑(加孔)
13-2	207006-88108	1	Charging cable	KA-888-H10	充電線(短)/KA-888-H10
13-3	5009-03010-440	2	Taper Head Philip Screw	M3*P0.5*10L,SUS	埋頭螺栓/M3*P0.5*10L SUS
13-4	5012-03006-200	2	Nyloc Nut	M3*P0.5*6,Multicolored Galvanized	尼龍螺帽/M3*P0.5*6邊(五彩)
13-5	106106-88103-A3	1	ASM,IGNITION W/KEYS	2-Way Key,4A 125VAC 2Amp 8212,A3	鑰匙組總成(黃色)(含螺帽)/雙向,4A 125VAC 2Amp 8212(A3)
13-6	207020-88102	1	Wire harness, circuit braker	KA-888-R4	開關線組(鑰匙)/KA-888-R4
13-7	208201-88100-A2	1	Light Switch	Blue	藍色按鈕(不銹鋼彈簧)/二段式(含螺帽、平墊)A2
13-8	206105-88100-A2	1	Horn Switch	Plain Yellow Button	喇叭按鈕(不銹鋼彈簧)/黃色(含螺帽、平墊)A2
13-9	208202-88103-A2	1	Hazard Warning Switch	2pin,Red	三角型按鈕(不銹鋼彈簧)/2pin 紅色(含螺帽、平墊)A2
13-10	107005-77800	1	Switch cable assembly	RA-888-R1	開關線組/RA-888-R1
13-11	207020-88104	1	Wire harness, circuit braker	KA-888-R6	開關線組(方向燈)/KA-888-R6
13-12	207020-88105	1	Wire harness, circuit braker	KA-888-R7	開關線組(喇叭)/KA-888-R7
13-13	209931-66100	2	Rubber plug	ϕ 17	開關孔塞/ϕ 17
13-14	209931-89100	1	Rubber Plug	for Gas Lift	孔塞/配合氣壓棒
13-15	301123-16	1	Warning sticker	N23-16	三角型警告貼紙/N23-16(大)
13-16	301174-13	1	Warning sticker	N74-13,A0518,North America	警告貼紙/N74-13(A0518) 美規
13-17	301123-41	1	Warning Sticker	N23-41	三角型警告貼紙/N23-41
13-18	301174-16	1	Warning Sticker	N74-16	警告貼紙/N74-16
13-19	301153-01	1	Instruction sticker	N53-1	指示貼紙/N53-1
13-20	301123-08	1	Warning sticker	N23-8,Small	三角型警告貼紙/N23-8(小)
13-21	301123-35	1	Warning Sticker	N23-35	三角型警告貼紙/N23-35,(配合服務記錄卡)
13-22	301123-20	1	Warning sticker	N23-20,Front Panel	三角型警告貼紙/N23-20(大)
13-23	301123-14	1	Warning sticker	N23-14	三角型警告貼紙/N23-14(大)



INDEX.14

[back to contents](#)

Index NO.	Part NO.	Qty.	Description	Specification	Remark
14	-----		Control assembly		上控制總成
14-1	106108-67700-A2	1	Potentiometer	N7-4,(5K#3)	搖桿電阻加工/N7-4/(5K#3)
14-2	4001144-03	1	Potentiometer Fixing plate	A144-3, ϕ 4.1	搖桿電阻固定片/A144-3 (ϕ 4.1)
14-3	206103-88103-A2	1	Potentiometer	5K#3-A2	搖桿電阻/5K#3-A2(含平墊、螺帽)
14-4	4003198-00	1	Spacer	C198(ϕ 11.3* ϕ 9.5*5.5L)	間隔圈/C198(ϕ 11.3* ϕ 9.5*5.5L)
14-5	206106-88100	1	Spring		扭力彈簧
14-6	206107-88102	1	Throttle lever	#3	加速控制桿/#3
14-7	5004-04004-210	2	Set Screw	M4*P0.7*4L,Multicolored Galvanized	無頭螺栓/M4*P0.7*4L (五彩)
14-8	207010-66402	1	Control cable	KA-889-K6	上控制線/KA-889-K6
			-----*-----		
14-9	206122-88102	2	Extension, thottle lever	PVC,Black#1	加速桿加長片/PVC (黑)#1,長
			-----*-----		
14-10	5005-04006-210	2	Philip Screw	M4*P0.7*6L,Multicolored Galvanized	十字圓頭螺栓/M4*P0.7*6L (五彩)
14-11	206114-66103-A4	1	PCB for Battery Gauge	AC LED-B1-J, A4	電量指示器PC板/AC LED-B1-J(有端子)(A4)
14-12	206128-80500	1	Gasket	\square 34.7*12.1*0.3T	指示燈座墊片/ \square 34.7*12.1*0.3T
14-13	206126-88100	1	Indicator lamp	Black	指示燈座/黑色
14-14	301192-00	1	Decal	N92,E,-,F	電量指示貼紙/N92 (E - F)
			-----*-----		
14-15	207010-77803	1	Control cable	RA-888-K4,C-Tiller	上控制線/RA-888-K4(C把)
14-16	206217-66801-A2	1	PCB w/ Horn	PH-27,A2	音效器/PH-27(A2)
14-17	5006-04012-213	2	Self tapping screw	M4*12L,Multicolored Galvanized	自攻螺栓(TP丸頭)/M4*12L (五彩)尖尾
14-18	206109-88100-A2	1	Variable resistor	B25K(A2)	可變電阻/B25K(含平墊、螺帽)A2
14-19	206113-88102-A3	1	Pre-Set Speed Knob	CF-X3-T18	速率調整鈕(黑色)/CF-X3-T18(ϕ 27.6)(A3)
14-20	206109-66800-A2	1	Variable resistor	B10K(A2)	可變電阻/B10K(含平墊、螺帽)A2

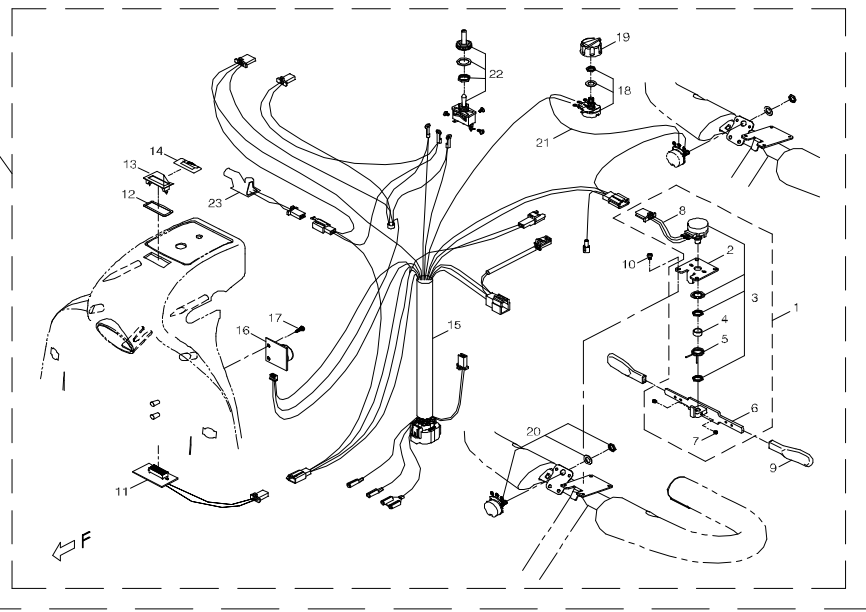
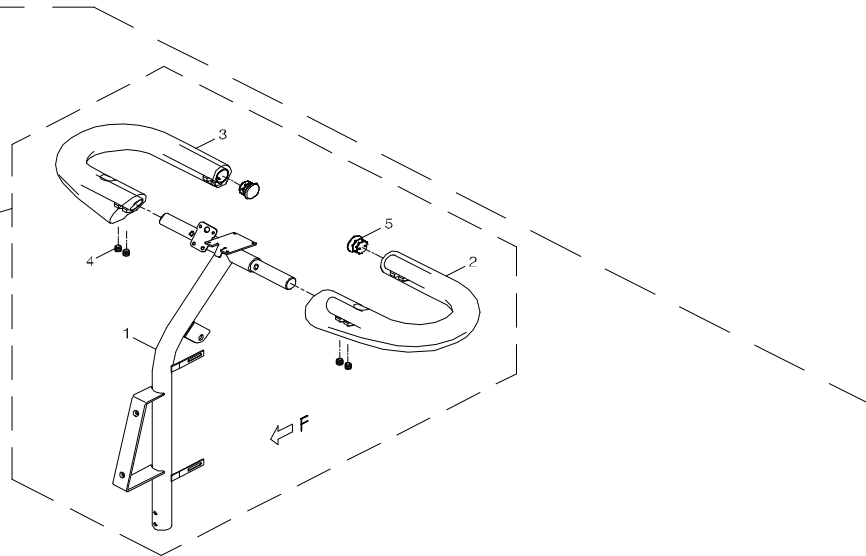
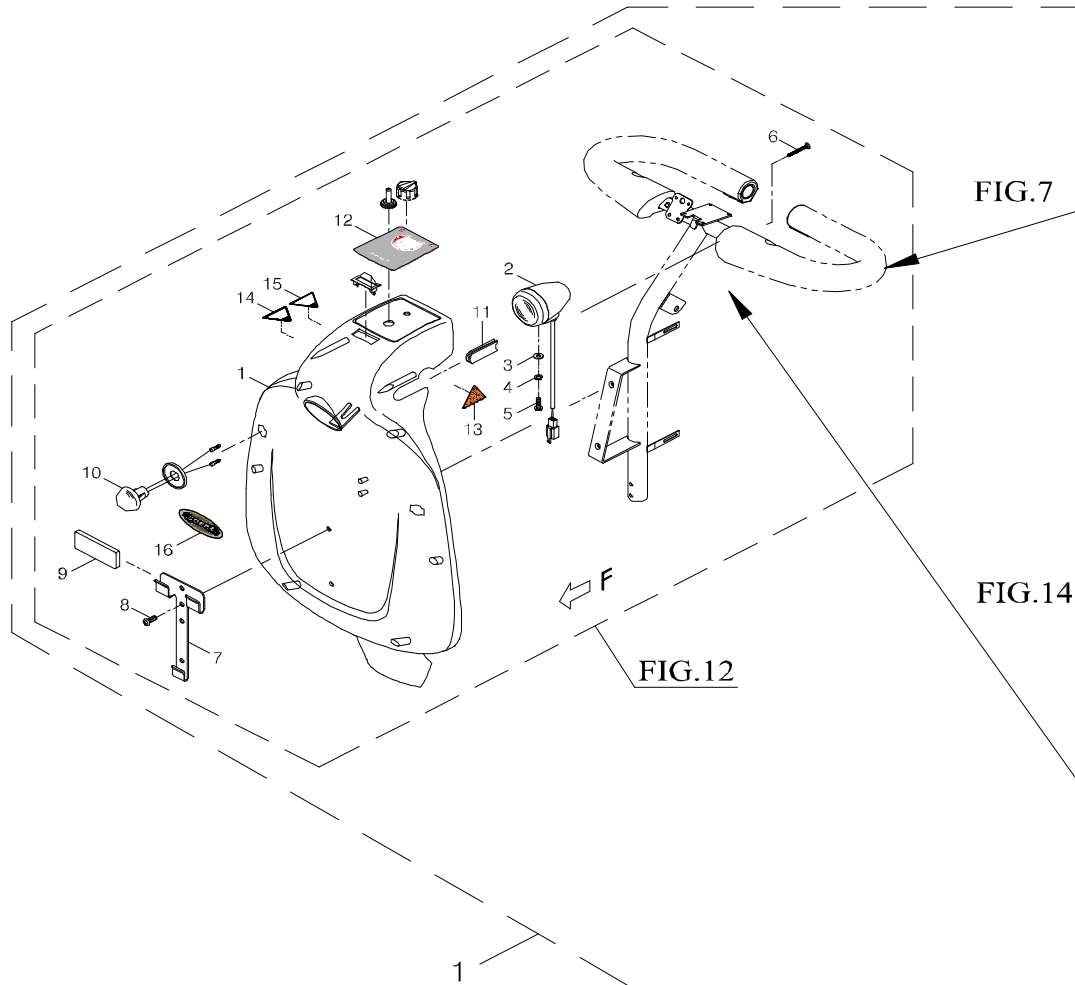
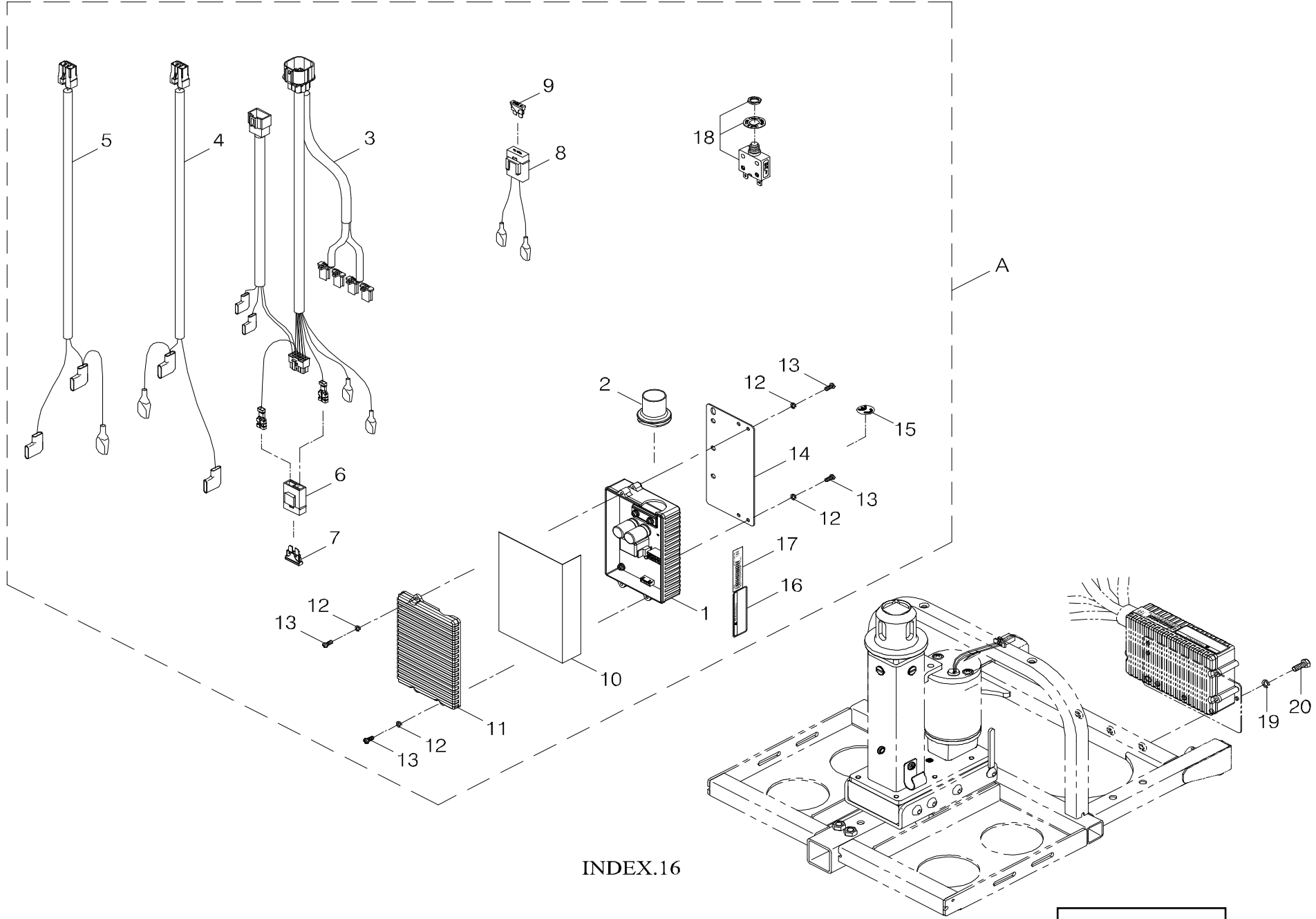


FIG. 7

FIG. 14

FIG. 12

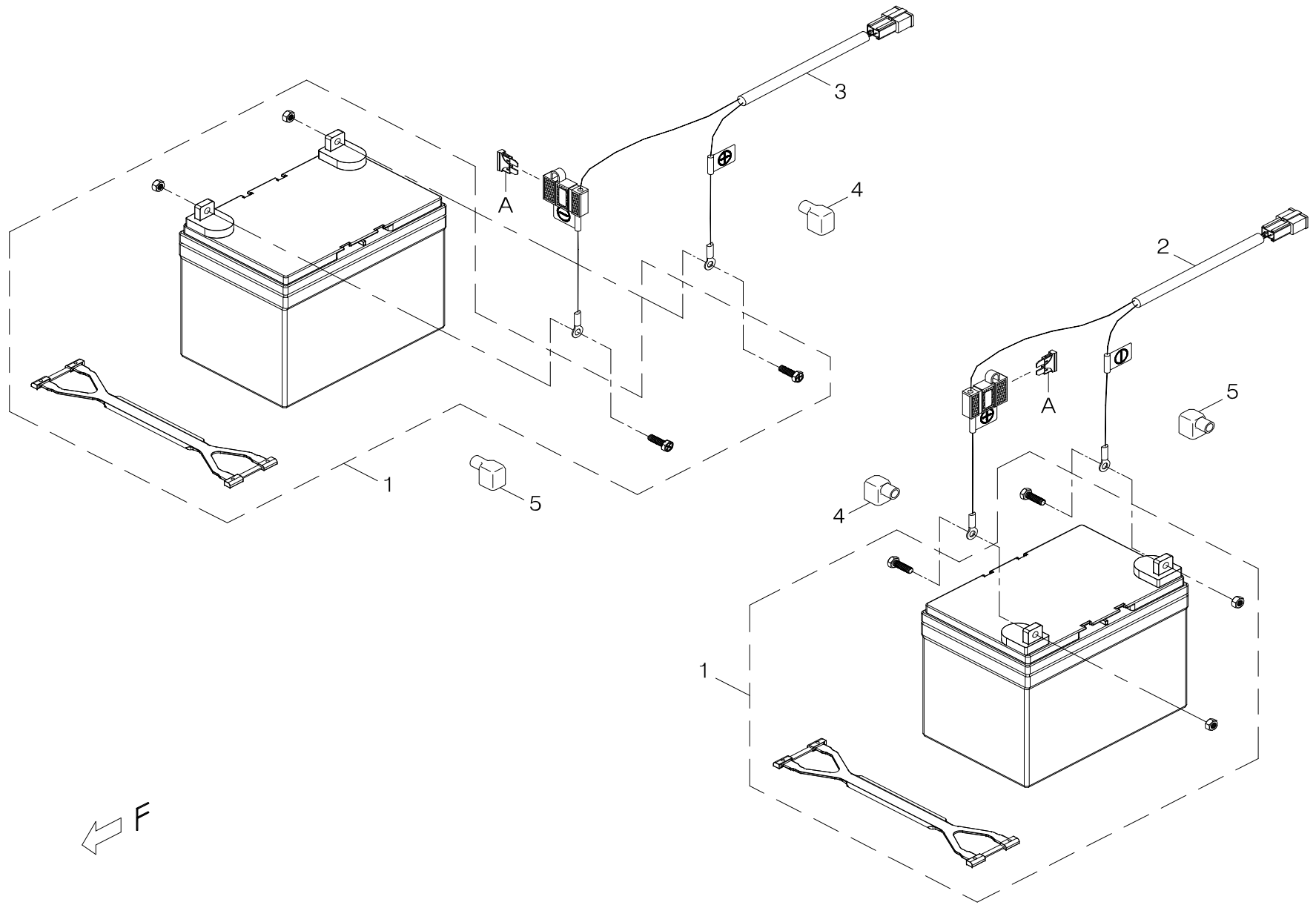
Index NO.	Part NO.	Qty.	Description	Specification	Remark
15-1	103609-77820-22	1	C-Type Handle Bar Assembly	778EL, Burgundy Red, w/ Gas Lift	C型把手總成(氣壓棒)/CA08-778EL 棗紅
7	-----	REF	C-type Handle Bar w/ Hand Grip		C型把手+披覆加工(氣壓棒)
12	-----	REF	Handle bar cover assembly		把手蓋總成
14	-----	REF	Control assembly		上控制總成
			----- * -----		
15-1	103609-77820-12	REF(1)	C-type Tiller Assembly	778EL , Silver	C型把手總成(氣壓棒)/CA08-778EL 銀灰
7	-----	REF	C-type Handle Bar w/ Hand Grip		C型把手+披覆加工(氣壓棒)
12	-----	REF	Handle bar cover assembly		把手蓋總成
14	-----	REF	Control assembly		上控制總成
			----- * -----		
15-1	103609-77820-4A	REF(1)	C-Type Handle Bar Assembly	778EL, Blue, w/ Gas Lift	C型把手總成(氣壓棒)/778EL 孔雀藍
7	-----	REF	C-type Handle Bar w/ Hand Grip		C型把手+披覆加工(氣壓棒)
12	-----	REF	Handle bar cover assembly		把手蓋總成
14	-----	REF	Control assembly		上控制總成



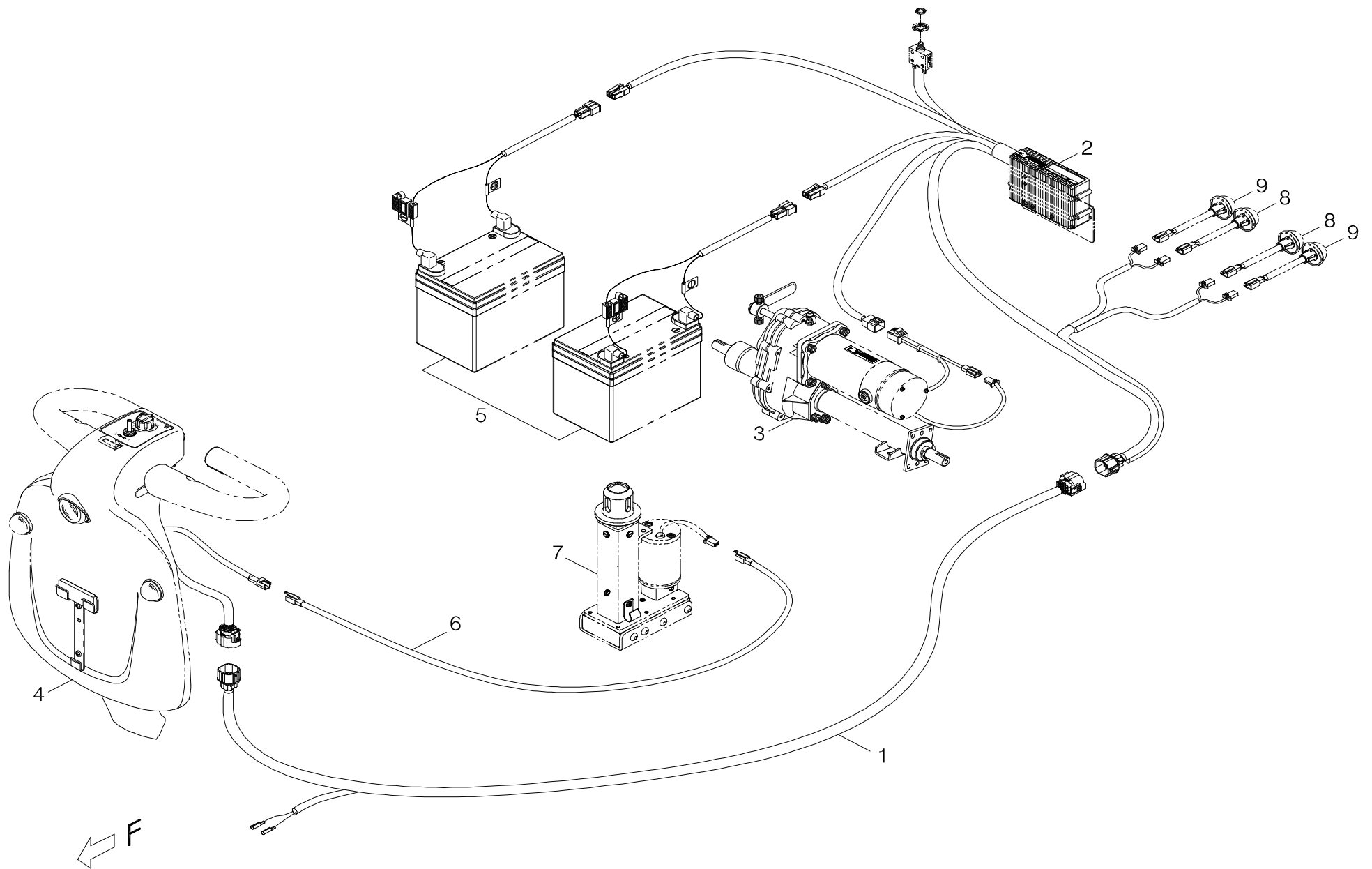
INDEX.16

[back to contents](#)

Index NO.	Part NO.	Qty.	Description	Specification	Remark
16-A	106202-88418-A2-1	1	Main Control Box Assembly,w/ Bracket etc	AC2-70, for 888EL/778EL w/ C-Bar	下控制總成(C把)含固定片配件/(AC2-70)888EL/778EL
16-1	206221-88800-A4	1	Controller Assembly	AC2-70, A4	控制器/AC2-70(含盒)(A4)
16-2	206210-88100	1	Protection		護套(O)型環
16-3	207005-89812	1	Main Control Cable	NA-889-J17	主控制線/NA-889-J17
16-4	207003-77801	1	Power cable	+,RA-888-D2	電源線(正)/RA-888-D2
16-5	207004-77800	1	Power cable	-,RA-888-E1	電源線(負)/RA-888-E1
16-6	206206-88101	1	Fuse housing		保險絲座/盒式
16-7	206901-88100	1	Fuse	2A	保險絲(盒式)/2A
16-8	207014-88105	1	Connection Cable	KA-888-L8	連接線/KA-888-L8
16-9	206901-88111	1	Fuse	UL 10A	保險絲(盒式)/UL 10A
16-10	302002-01	1	Insulator	127*129m/m*0.25t	絕緣膠片/127*129m/m*0.25t
16-11	206209-77200-A2	1	Control box cover	UL8A/B	下控制盒蓋/UL8A/B(A2)
16-12	5022-04007-210	4	Spring Washer	ϕ 4*7*1.25t,Multicolored Galvanized	彈簧墊圈/ϕ 4*7*1.25t (五彩)
16-13	5005-04010-210	4	Philip Screw	M4*P0.7*10L,Multicolored Galvanized	十字圓頭螺栓/M4*P0.7*10L (五彩)
16-14	4001516-08-A2	1	Adaptor Bracket	A516-8-A2	控制固定片/A516-8-A2
16-15	301166-02	1	CE Mark Label	N66-2, White Sign	CE貼紙/N66-2 透白
16-16	301174-17	1	Warning sticker	N74-17	警告貼紙/N74-17
16-17	-----	REF(1)	條碼貼紙	DECAL	
16-18	206207-88100	1	Circuit breaker	30A	安全開關/30A(含平墊、螺帽)
-----	505201-00940-50	3	Cable Tie	CV-094B	束帶/CV-094B
-----	505201-01500-50	2	Cable Tie	CV-150B	束帶/CV-150B
16-19	5022-06010-210	2	Spring Washer	ϕ 6*10,Multicolored Galvanized	彈簧墊圈/ϕ 6*10 (五彩)
16-20	5001-06012-210	2	Hex head screw	M6*P1.0*12L,Multicolored Galvanized	外六角螺栓/M6*P1.0*12L (五彩)



Index NO.	Part NO.	Qty.	Description	Specification	Remark
17	800501-882-02-A2	1	SLA Batteries w/ Battery Cables	888, 35Ah*2, A2	加電瓶模組/888 (35Ah)(ASR),A2
17-1	109101-88116-35	2	SLA Battery , 12V 35Ah	w/ Carrying Strap 180L, ASR 12350	鉛酸電瓶(含提攜帶180L及紙箱)/ASR 12350 12V 35Ah
17-2	207001-88102	1	Battery Cable	+,KA-888-F3A,40A Fuse	電瓶線(正)/KA-888-F3A,40A Fuse
17-3	207002-88102	1	Battery Cable	-,KA-888-F4A,40A Fuse	電瓶線(負)/KA-888-F4A,40A Fuse
17-A	-----	REF(2)	Fuse	UL 40A	保險絲(盒式)/UL 40A
17-4	209913-88100	2	Protection	R	電瓶線護套(紅)/通用(25*29)
17-5	209914-88100	2	Protection	B	電瓶線護套(黑)/通用(25*29)

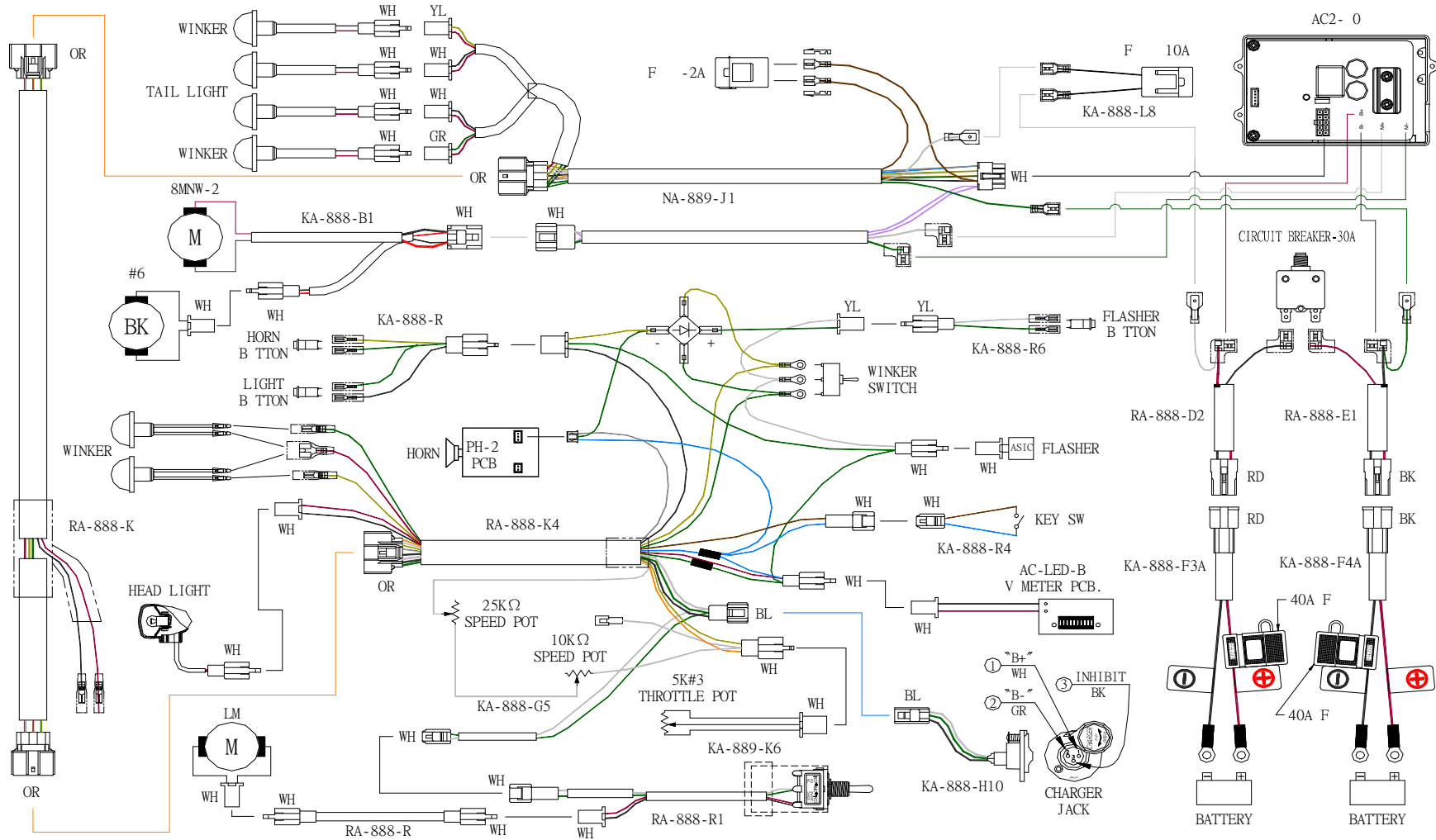


Index NO.	Part NO.	Qty.	Description	Specification	Remark
18	-----		Control and battery wiring illustration		控制及電瓶導線總成
18-1	207011-67100	1	Control Connection Cable	RA-888-K	控制連接線/RA-888-K
			-----*-----		
18-2	-----	REF(1)	Main Control Box Assembly,w/ Bracket etc		下控制總成(C把)含固定片配件
			-----*-----		
18-3	-----	REF(1)	Drive-train Assembly		馬達剎車變速箱總成
			-----*-----		
18-4	-----	REF(1)	C-Type Handle Bar Assembly		C型把手總成(氣壓棒)
			-----*-----		
18-5	-----	REF(1)	SLA Batteries w/ Battery Cables		加電瓶模組
			-----*-----		
18-6	207021-77800	1	cable assembly	RA-888-R	電線組/RA-888-R
18-7	-----	REF(1)	Motor & electric seat lift assembly		馬達升降器總成(L型)
			-----*-----		
18-8	-----	REF(2)	Taillight Set		尾燈總成
18-9	-----	REF(2)	Winker/Indicator		方向燈
				-----*-----	
-----	109201-88306	1	Charger assembly	#3-6 24V/3A,110/Asia	充電機總成(鉛酸)ML3(含說明書)/#3-6 24V/3A PIHSIANG 110/亞洲
				-----*-----	
-----	505201-00940-50	REF	Cable Tie	CV-094B	束帶/CV-094B
-----	505201-01200-50	REF	Cable Tie	CV-120B	束帶/CV-120B
-----	505201-01500-50	REF	Cable Tie	CV-150B	束帶/CV-150B
-----	505201-02000-50	REF	Cable Tie	CV-200B	束帶/CV-200B
-----	505201-02500-50	REF	Cable Tie	CV-250B	束帶/CV-250B

Wiring Diagram for TE-778EL

Color Synopsis

- BL:BLUE
- BK:BLACK
- RD:RED
- YL:YELLOW
- OR:ORANGE
- VI:PURPLE
- GR:GREEN
- GY:GRAY
- WH:WHITE
- BR: BROWN
- PK: PINK
- LB: LIGHT BLUE



DWG.NO : AC2-70-025
 EDITION : A1

APPENDIX(1)

[back to contents](#)