

GMP
ISO9001
ISO14001
ISO13485
CERTIFIED

PIHSIANG®

SHOPRIDER®

MODEL: **TE-GK8-3**

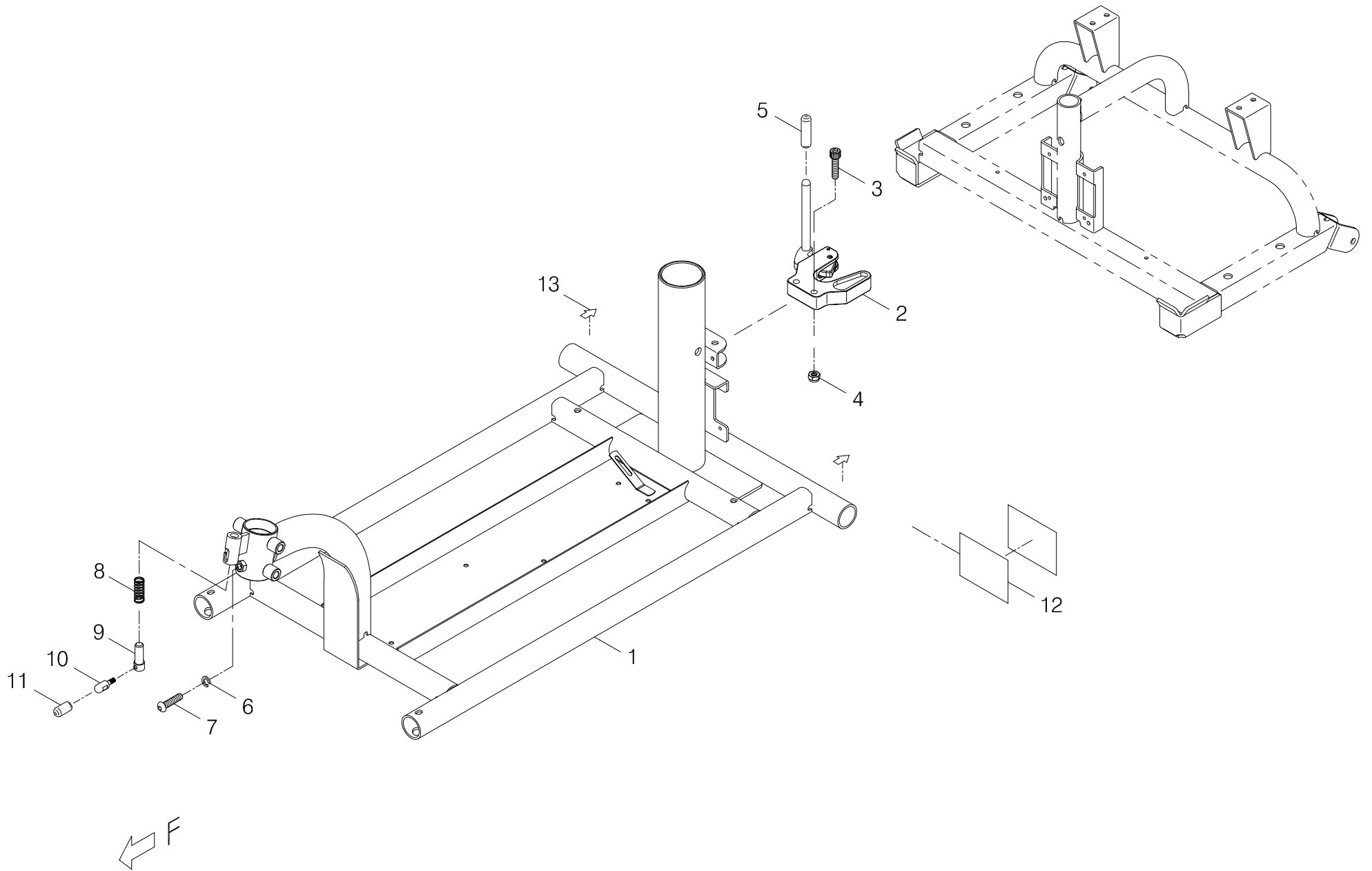
(PATENTED)

PIHSIANG MACHINERY MFG. CO., LTD.

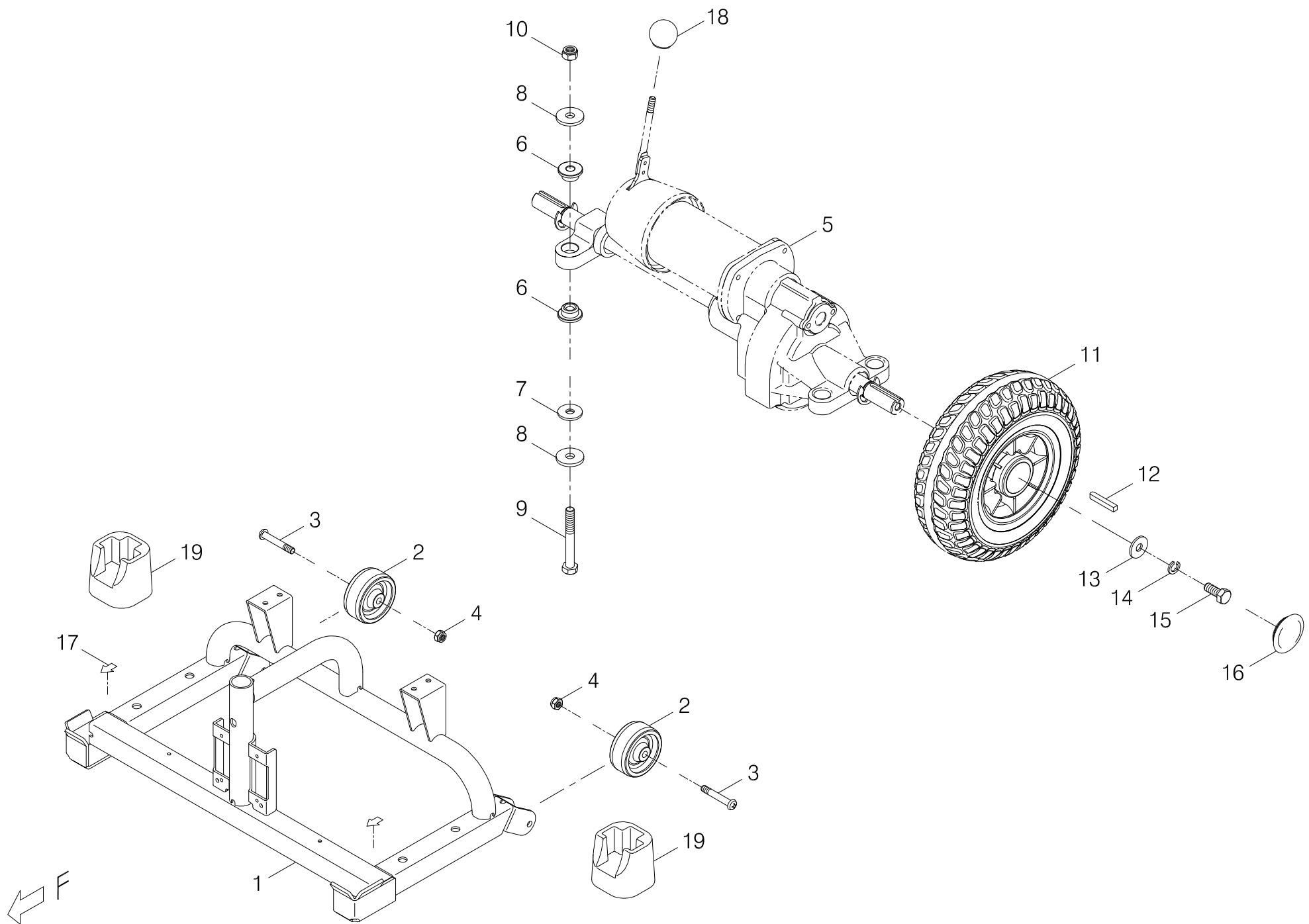
*NO.108, HSIN-HE ROAD, HSIN-FENG HSIANG 304
HSINCHU COUNTY, TAIWAN*

TABLE OF CONTENTS
ILLUSTRATION

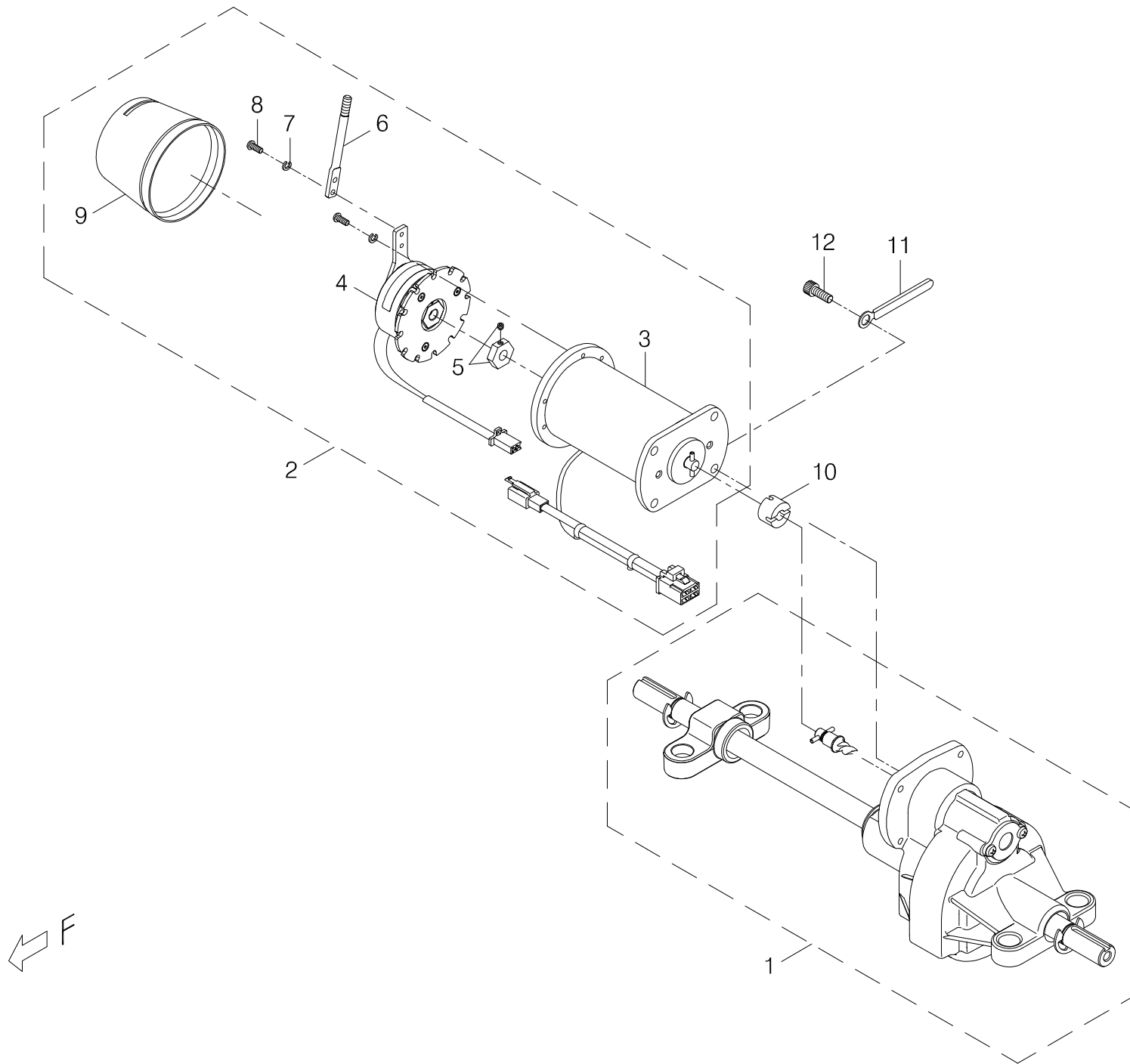
INDEX.1	FRONT CHASSIS ASSEMBLY-----	1-1
INDEX.2	REAR CHASSIS ASSEMBLY-----	2-1
INDEX.3	DRIVE-TRAIN ASSEMBLY-----	3-1
INDEX.4	PLATE BRACKET OF ELECTRODE -----	4-1
INDEX.5	FRONT AXLE ASSEMBLY -----	5-1
INDEX.6	HANDLE BAR + HANDLE GRIP ASSEMBLY ----	6-1~2
INDEX.7	STANDARD SEAT ASSEMBLY -----	7-1
INDEX.8	FRONT CHASSIS COVER ASSEMBLY -----	8-1
INDEX.9	REAR CHASSIS COVER ASSEMBLY -----	9-1
INDEX.10	UPPER CONTROLLER	10-1
INDEX.11	TILLER ASSEMBLY COMPLETE-----	11-1
INDEX.12	MAIN CONTROL BOX ASSEMBLY -----	12-1
INDEX.13	BATTERY BOX ASSEMBLY -----	13-1~2
INDEX.14	CONTROL AND BATTERY WIRING ILLUSTRATION-	14-1
INDEX.15	FRONT & REAR PROTECTION COVER ASSEMBLY -	15-1~2
	APPENDIX (1) - WIRING DIAGRAM -----	
	APPENDIX (2) - STICKER AND DECAL -----	



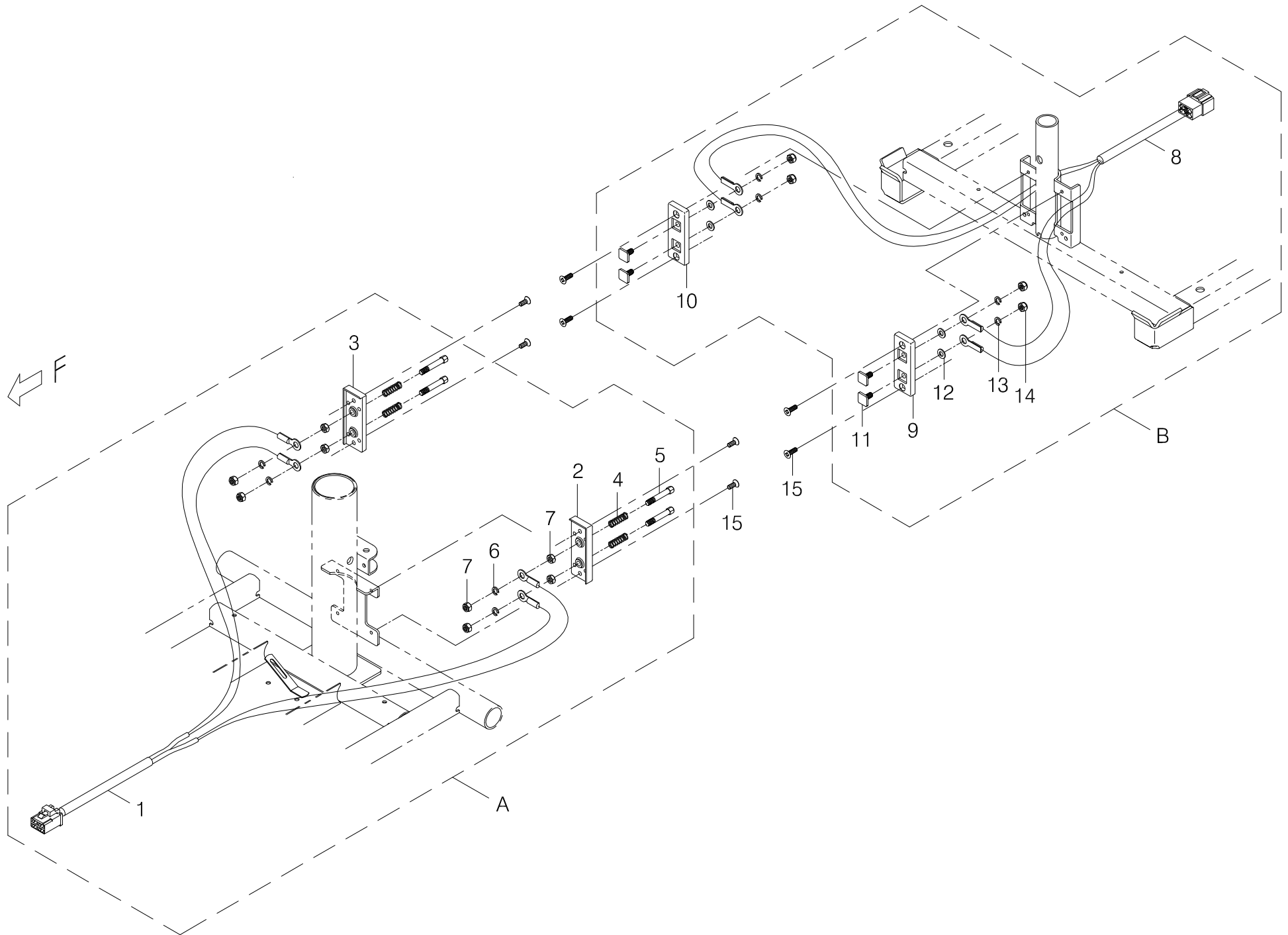
Index NO.	Part NO.	Qty.	Description	Specification	Remark
1	-----		Front chassis assembly		
1-1	102101-69500-A5	1	Front Chassis	GK8-3, A5	
			-----*		
1-2	202913-68900	1	Bracket	GK-3/4 With hook,Black	
1-3	5002-06025-720	2	CAP HEAD ALLEN SCREW	M6*P1.0*25L,Black Galvanized	
1-4	5012-06010-701	2	Nyloc Nut	M6*P1.0*10*6t,Black Galvanized	
1-5	209929-69100	1	Vinyl cover Yellow	φ 7.5*35L	
			-----*		
1-6	5022-06010-710	1	Spring washer	φ 6*10,Black Galvanized	
1-7	5003-06025-720	1	Button Head Allen Bolt	M6*P1.0*25L,Black Galvanized	
1-8	202929-68900	1	Tiller Lock Spring	0.6WD*9.5D*25L	
1-9	4003291-03	1	Tiller Lockpin	C291-3	
1-10	4003306-00	1	Pin	C306	
1-11	209929-69101	1	Vinyl cover Yellow	φ 6.8*18L	
			-----*		
1-12	9003-009	REF(2)	Insulation Tape	145 50W	



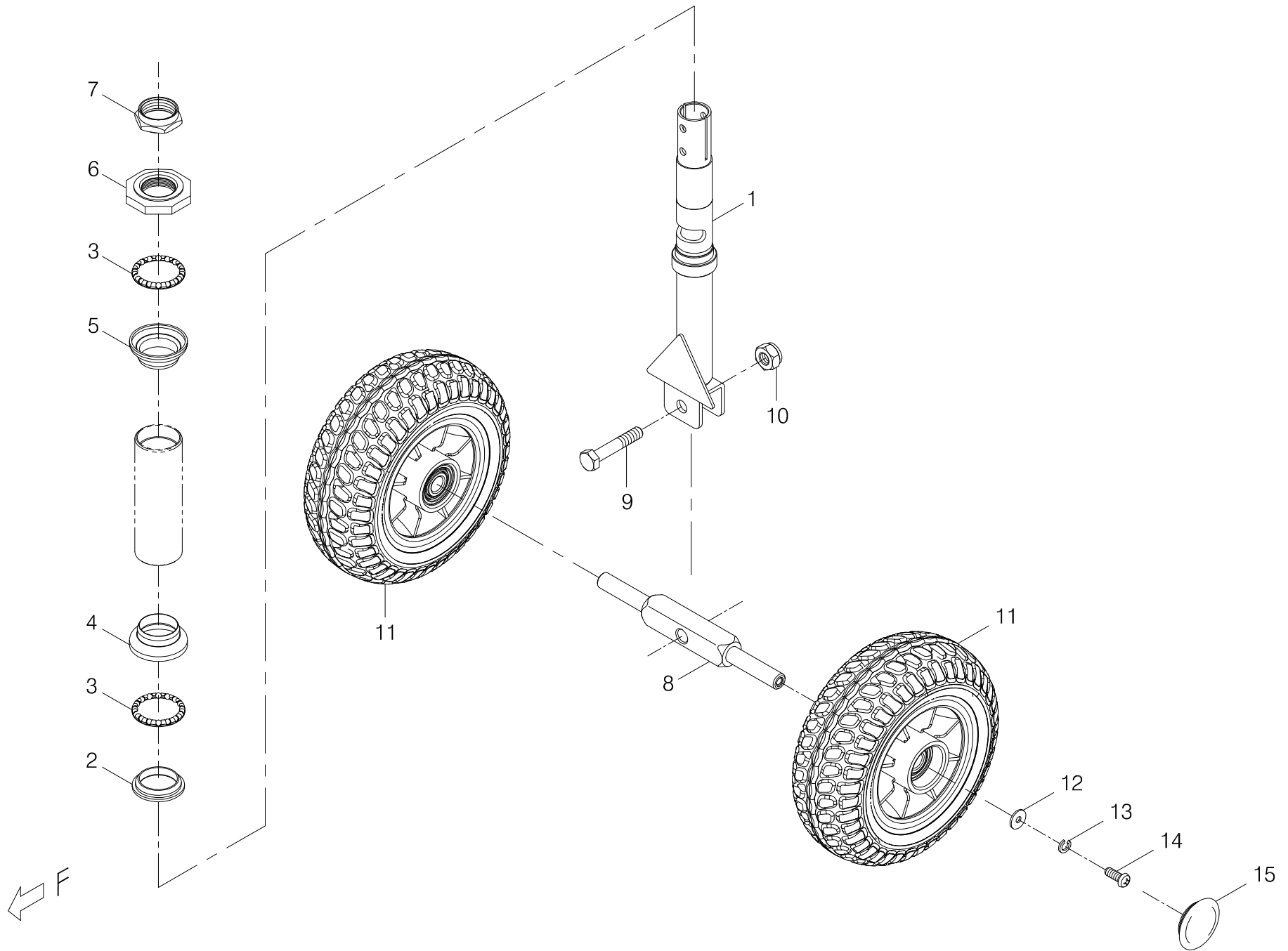
Index NO.	Part NO.	Qty.	Description	Specification	Remark
2	-----		Rear chassis assembly		
2-1	102201-69500	1	Rear chassis	GK-8	
			-----*-----		
2-2	209928-89300	2	Anti-tip Wheel	2"	
2-3	5005-06038-710	2	Screw	M6*P1.0*38L,Black Galvanized	
2-4	5012-06010-701	2	Nylon lock nut	M6*P1.0*10*6t,Black Galvanized	
			-----*-----		
2-5	-----	REF(1)	Drive-train Assembly		
2-6	209908-66900	8	Rubber Gasket	Round,778XL	
2-7	209908-69200	4	Rubber Gasket	787L	
2-8	4001428-05	8	Flat Washer	A428-5, ϕ 8.4*26*3t Black Galvanized	
2-9	5001-08065-720	4	Hex Head Bolt	M8*P1.25*65L,Black Galvanized	
2-10	5012-08013-700	4	Nyloc Nut	M8*P1.25*13,7.8t,Black Galvanized	
			-----*-----		
2-11	105201-69101	2	Rear Wheel Assembly, Gray Tire	PU 200*70,Black Plastic Rim w/AU Hub	
2-12	505301-00505-02	2	Drive Key	5*5*35	
2-13	5021-08022-210	2	Flat Washer	ϕ 8*22*2t,Multicolored Galvanized	
2-14	5022-08013-210	2	Spring washer	ϕ 8*13,Multicolored Galvanized	
2-15	5001-08020-440	2	Hex Head Bolt	M8*P1.25*20L,SUS304	
2-16	209931-67802	2	Hub Cap	40*4-4.5	
			-----*-----		
2-17	301111-13	2	Indication Sticker	N11-13	
2-18	201201-69500	1	Hand grip	Round,Yellow	



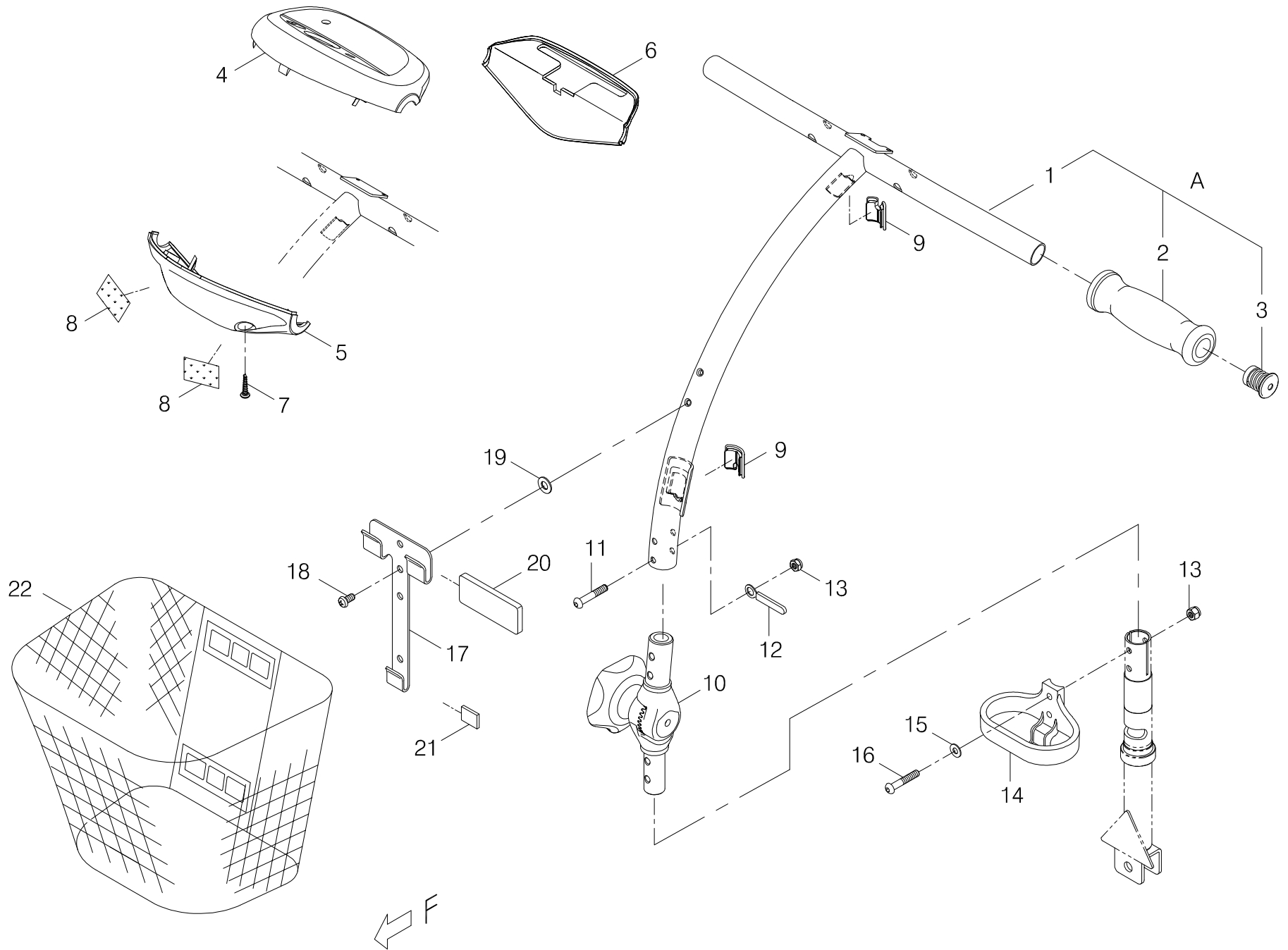
Index NO.	Part NO.	Qty.	Description	Specification	Remark
3	100006-69501	1	Drive-train Assembly	7μM, #3-1, #4μ-2(483L), GK-8	
3-1	100404-68903-A2	1	Transaxle Assembly	#4μ(C), 483TL, GK3/4/787M, A2	
3-2	100101-69501	1	Motor and Brake Assembly	787μM, #3-1, GK-8	
3-3	100201-03011	1	Motor	7μM #1-1, 4950rpm	
3-4	100303-00107	1	Electromagnetic Brake Assembly	#3-1L,WR198A407P1, UL7-W-L3	
3-5	200302-88101-A2	1	Driving Hex Axle for Brake Disc	#2-1, 787N, A2	
3-6	200902-69500	1	Free wheel Lever	GK-8,Black	
3-7	5022-04007-210	5	Spring Washer	φ 4*7*1.25t, Multicolored Galvanized	
3-8	5005-04010-210	5	Philip Screw	M4*P0.7*10L, Multicolor Galvanized	
3-9	2399-00201-00	1	Protect Cover for Magnetic Brake	UL7-W/WD	
-----	505201-00940-50	3	Cable Tie	CV-094B	
3-10	200920-78700	1	Connector	φ 8*20*13L	
3-11	4001393-03	1	Hook Plate	A393-3(φ 6.1*60L)	
3-12	5002-06016-220	4	CAP HEAD ALLEN SCREW	M6*P1.0*16L,Multicolored Galvanized	
-----	301174-74	1	Warning Sticker	N74-74, for Caution of Hot	
-----	301179-04	1	Trademark Sticker	N79-4	



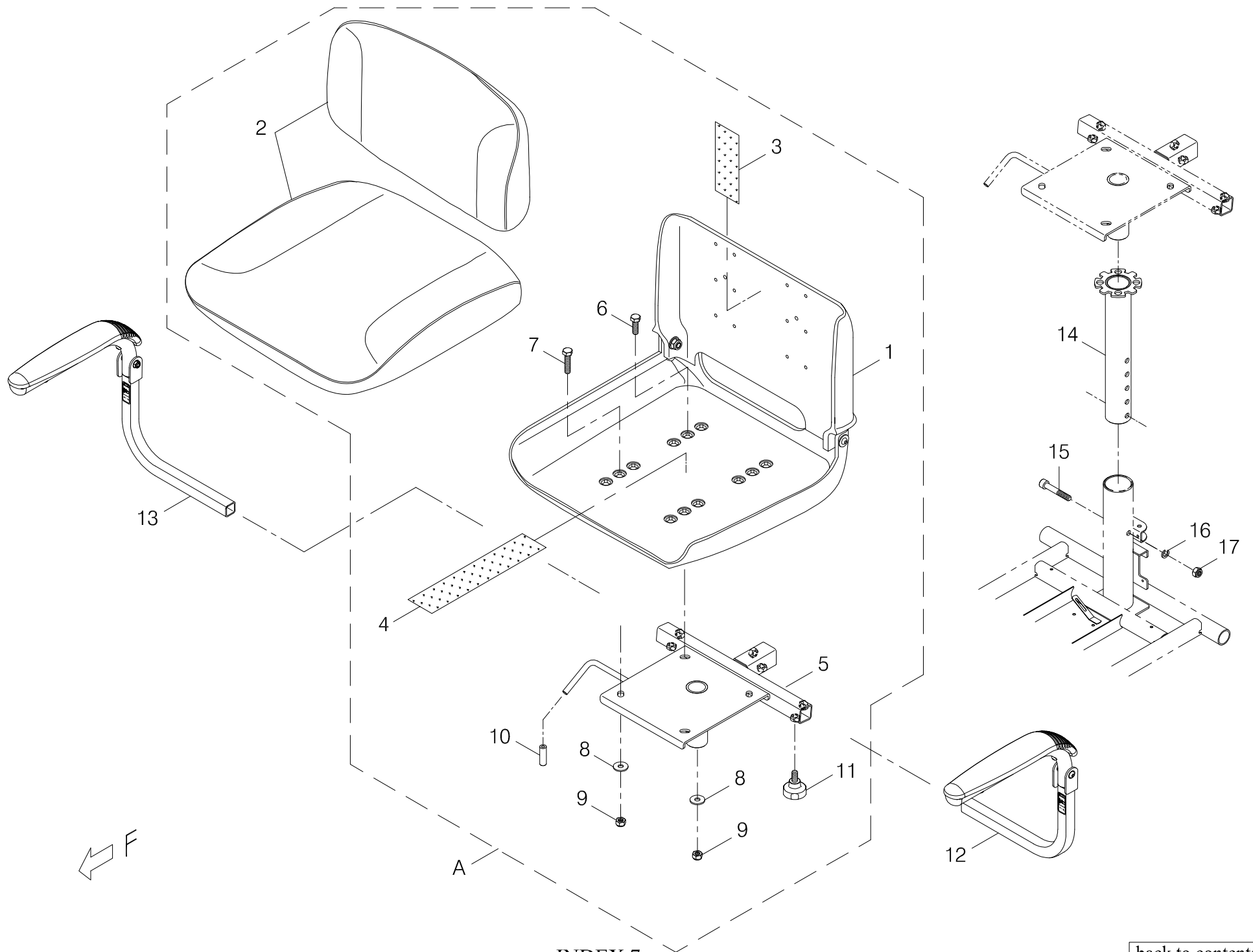
Index NO.	Part NO.	Qty.	Description	Specification	Remark
4-A	103511-69001	1	Motor/Brack Loom Assembly	GK-4/8,Dark Red	
4-1	207019-77201-A3	1	Motor EXT. Cable	GK-3-T1(A3)	
4-2	203511-69500-A2	1	Plate bracket of front electrode	GK-3/4/8,RED,A2	
4-3	203511-69501-A2	1	Plate bracket of front electrode	GK-3/4/8,RED,A2	
4-4	202402-77300-A2	4	Spring	0.7wd*5.4id*22L,8 3/4 Circle	
4-5	4003290-01-A2	4	Electrode Pin	C290-1(A2)	
4-6	5022-05008-210	4	Spring washer	§ 5*8,Multicolored Galvanized	
4-7	5011-05008-200	8	Hex Nut	M5*P0.8*8,Multicolored Galvanized	
			-----*-----		
4-B	103511-69501	1	Motor Power Pick Up Assembly	GK-3/4/8,RED	
4-8	207019-77200	1	Motor EXT. cable	GK-3-T	
4-9	203511-69502-A2	1	Plate bracket of rear electrode	GK-8,RED,A2	
4-10	203511-69503-A2	1	Plate bracket of rear electrode	GK-8,RED,A2	
4-11	4003290-05-A2	4	Power Connecting Terminal	C290-5-A2, GK-3/4	
4-12	5021-05010-210	4	Flat Washer	φ5.2*φ10*1t,Multicolored Galvanized	
4-13	5022-05008-210	4	Spring washer	§ 5*8,Multicolored Galvanized	
4-14	5011-05008-200	4	Hex Nut	M5*P0.8*8,Multicolored Galvanized	
			-----*-----		
4-15	5009-04010-710	8	Screw	M4*P0.7*10L,Black Galvanized	



Index NO.	Part NO.	Qty.	Description	Specification	Remark
5	-----		Front axle assembly		
5-1	101501-69500	1	Front fork assembly	GK8-3/787M-4	
			-----*-----		
5-2	201401-88200	1	Bearing bushing	§ 27	
5-3	201402-88200	2	Steering Bearings	5/32*16	
5-4	201403-88200	1	Bearing housing	§ 30	
5-5	201404-88200	1	Bearing housing	§ 30	
5-6	201405-88200	1	Bearing bushing	Large octangle	
5-7	201406-88200	1	Steering Head Nut	Dia 22.2	
			-----*-----		
5-8	4003281-00	1	Front Axle	C281	
5-9	5001-10040-720	1	Hex Head Bolt	M10*P1.25*40L,Black Galvanized	
5-10	5012-10017-700	1	Nylon lock nut	M10*P1.25*17,Multicolor	
5-11	105101-69501-A2	2	Front Wheel PU Gray Tire	7"*60, w/ 6201RS Bearing	
5-12	5021-06018-440	2	Flat Washer	§ 6*18*1.6t,SUS	
5-13	5022-06010-210	2	Spring Washer	§ 6*10, Multicolored Galvanized	
5-14	5005-06016-440	2	Philip Cap Head Bolt	M6*P1.0*16L,SUS	
5-15	209931-67802	2	Hub Cap	40*4-4.5	



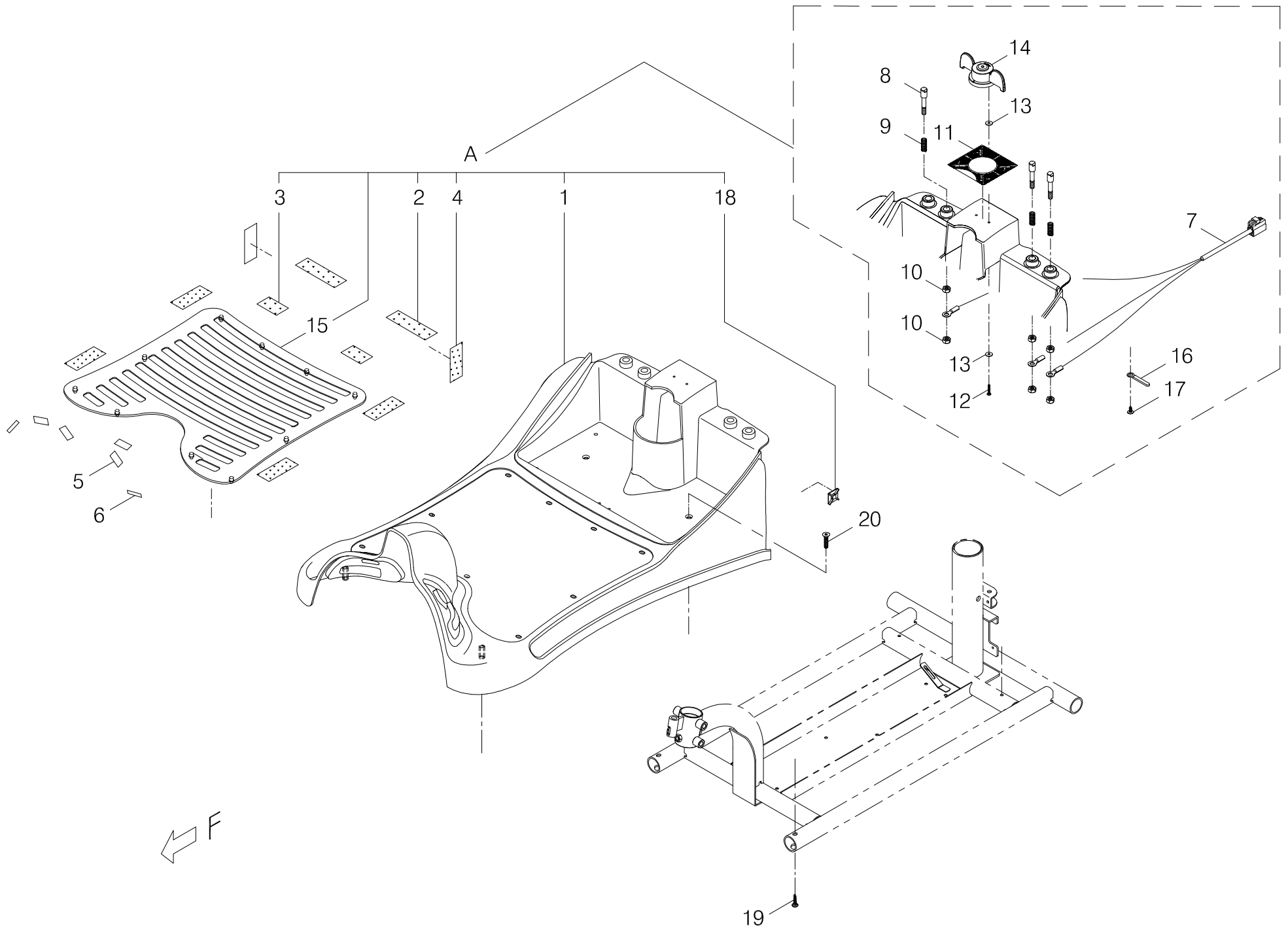
Index NO.	Part NO.	Qty.	Description	Specification	Remark
6-A	101102-69500-A2	1	Handle Bar Assembly w/ Sponge Grip	GK-8/GK8-3, A2	
6-1	101101-69200-A7	1	T-type Handle Bar	GK-8/GK8-3, Electric Deposit Coating, A7	
6-2	201102-78700-A2	2	Foam Grip	φ 19,A2	
6-3	201105-78701	2	Plug Cap for Handle Bar	CF25-2	
			----- * -----		
6-4	203301-68900-50-A3	1	Front Tiller Cover	GK-3/4,Black(A3)	
6-5	203301-69500-50	1	Front Tiller Cover	GK-8,Black	
6-6	203401-68900-50	1	Bottom Tiller Control Cover	GK-3/4,Black	
6-7	5006-05025-710	2	Self tapping screw	M5*25L,Black Galvanized	
6-8	203103-66500	REF(2)	Velcro	25W*25M,Hook	
			----- * -----		
6-9	209931-77301	2	Handle Bar Cable Clip	UL7-3/4,(φ 25.4)	
6-10	101201-68901	1	Handle Bar Joint Base Assembly	#5-2, w/ Tighten Knob	
6-11	5003-06035-720	2	Button Head Allen Bolt	M6*P1.0*35L,Black Galvanized	
6-12	4001393-01	1	Hook Plate	A393-1, φ 6.4,35L	
6-13	5012-06010-702	4	Nylon lock nut	M6*P1.0*10*8t,Black Galvanized	
6-14	102924-68900	1	Handle Hook	GK-3	
6-15	5021-06013-711	2	Flat Washer	φ 6.5*13*1t,Black Galvanized	
6-16	5003-06040-720	2	Button Head Allen Bolt	M6*P1.0*40L,Black Galvanized	
			----- * -----		
6-17	4001151-02	1	Basket Holder	A151-2	
6-18	5005-06012-710	2	Philip Screw	M6*P1.0*12L,Black Galvanized	
6-19	5021-08016-710	2	Flat Washer	8*16*1.5T,Black Galvanized	



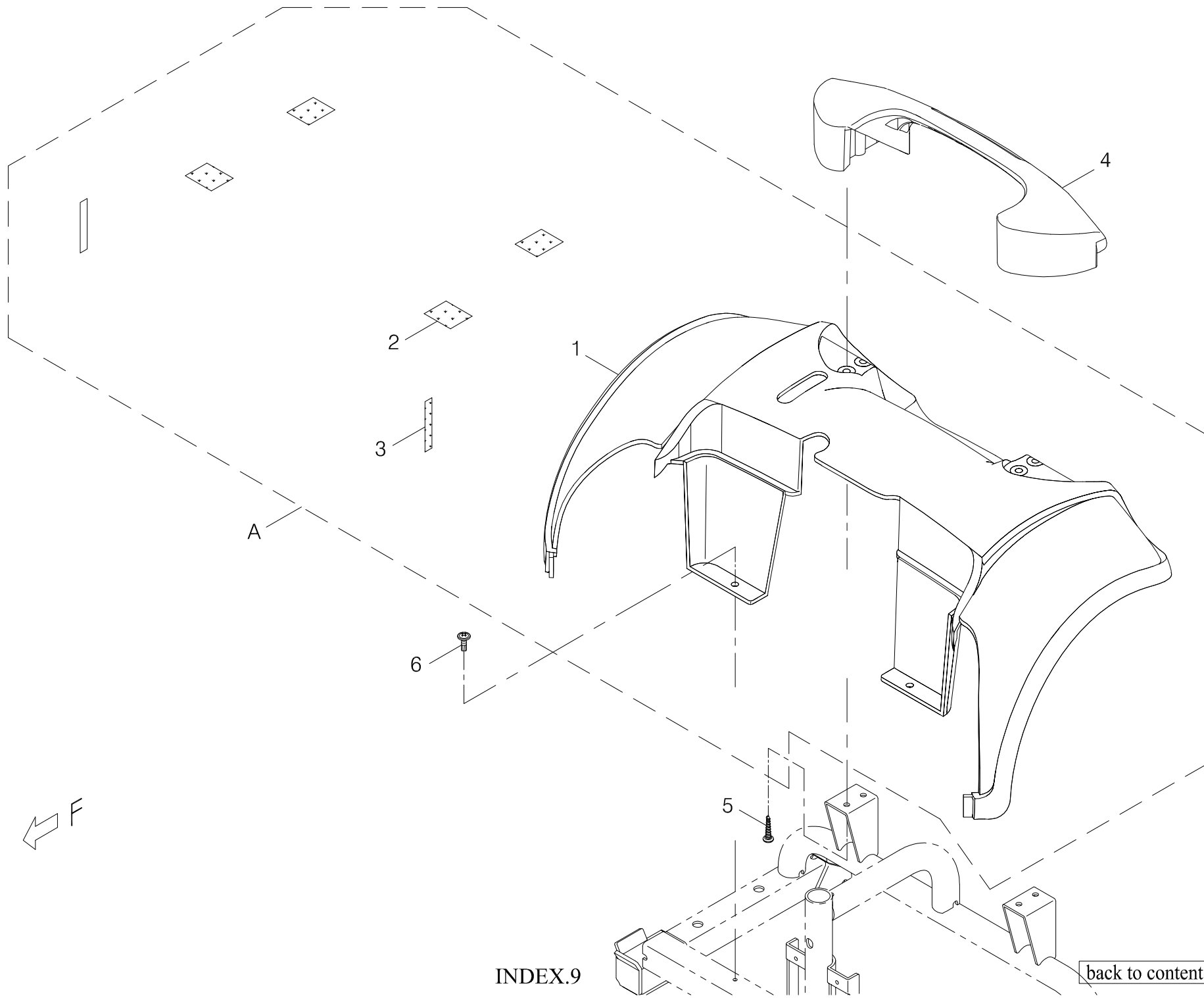
INDEX.7

[back to contents](#)

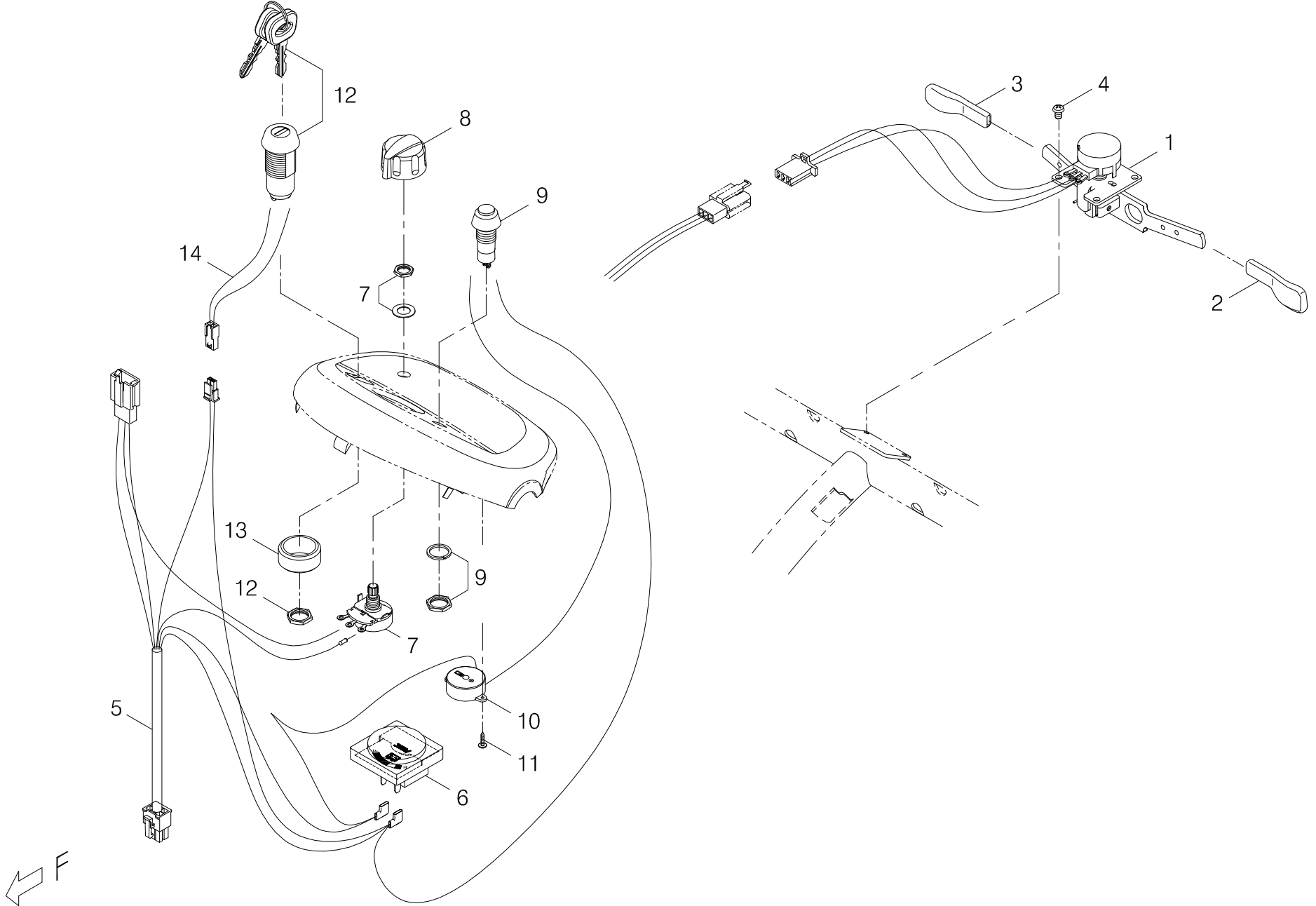
Index NO.	Part NO.	Qty.	Description	Specification	Remark
7	-----		Swivel seat , adaptor assembly		
7-A	800315-689-06	1	Standard seat assembly	w/Swivel Adaptor	
7-1	104101-66702	1	Seat	N-7,w/i bolts	
7-2	104213-66700-A3	1	Upholstery for Standard Seat	Gray Vinyl, N7, A3	
7-3	203103-88100	REF(1)	Velcro	50W*25M,Hook	
7-4	203103-88100	REF(1)	Velcro	50W*25M,Hook	
7-5	204501-69901-A2	1	Seat Adapter	SL7-3N, Black, A2	
7-6	5001-08025-710	2	Hex head screw	M8*P1.25*25L,Black Galvanized	
7-7	5001-08035-710	2	Hex head screw	M8*P1.25*35L,Black Galvanized	
7-8	5021-08022-710	4	Flat Washer	φ 8*22*2t,Black Galvanized	
7-9	5012-08013-700	4	Nyloc Nut	M8*P1.25*13,7.8t,Black Galvanized	
7-10	209929-69100	1	Vinyl cover Yellow	φ 7.5*35L	
7-11	5008-08020-210-A2	2	Tighten Knob	M8*P1.25*17L,Multicolored Galvanized,A2	
			-----*-----		
7-12	104300-69000-A4	1	Armrest Assembly	Left, GK-3/4, A4	
7-13	104400-69000-A4	1	Armrest Assembly	Right, GK-3/4, A4	
			-----*-----		
7-14	204508-68900-A2	1	Seat Post Adaptor	GK-3/4(A2)	
7-15	5002-08050-720	1	CAP HEAD ALLEN SCREW	M8*P1.25*50L,Black Galvanized	
7-16	5022-08013-710	1	Spring Washer	φ 8*13,Black Galvanized	
7-17	5012-08013-700	1	Nyloc Nut	M8*P1.25*13,7.8t,Black Galvanized	
-----	-----	REF(1)	Decal		



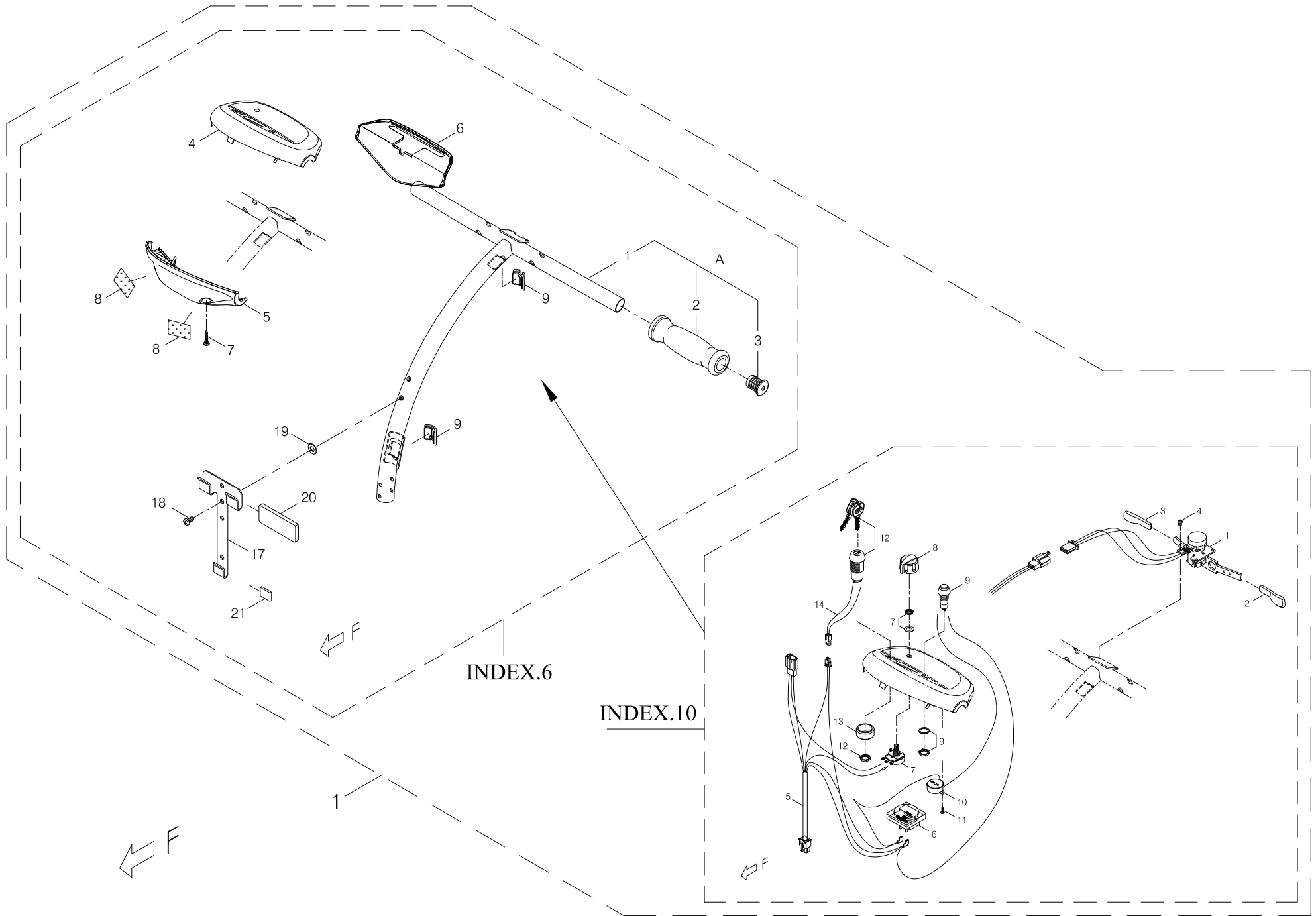
Index NO.	Part NO.	Qty.	Description	Specification	Remark
8-A	103102-69501-50	1	Front chassis cover assembly	w/decal,GK8-3,Black	
8-1	203101-69501-50-A2	1	Front Chassis Cover	GK8-3, Plain BLACK, A2	
8-2	203103-80100	REF(2)	Velcro	25W*25M,Loop	
8-3	203103-80100	REF(2)	Velcro	25W*25M,Loop	
8-4	203103-66500	REF(6)	Velcro	25W*25M,Hook	
8-5	203103-66500	REF(4)	Velcro	25W*25M,Hook	
8-6	203103-66500	REF(2)	Velcro	25W*25M,Hook	
8-7	207003-77200-A3	1	Power Cable	GK-3-D, A3	
8-8	4003290-11	3	Terminal Contact	C290-11(GK8/8-3)	
8-9	202927-69501	3	Spring	0.8wd*6.3od*20L,8 Circle	
8-10	5011-06010-200	6	Hex Nut	M6*P1.0*10*5L,Multicolored Galvanized	
8-11	301112-02	1	Position Guide Sticker	N12-2, LOCK/RELEASE	
8-12	5006-03010-510	2	Self Tapping Screw	M3*10L	
8-13	5021-03010-210	4	Flat Washer	∅ 3.2*10*0.8t,Multicolored Galvanized	
8-14	209943-68900	1	Battery Lock Kit	GK-3/4/8/8-3	
8-15	209901-69503	1	Floor mat	GK8-3	
8-16	4001393-01	1	Hook Plate	A393-1, ∅ 6.4,35L	
8-17	5006-04010-710	1	Self tapping screw	M4*10L,Black Galvanized	
8-18	209936-68900-50	2	Mount Plate for Cable Tie	HC-101S, Black	
-----	301174-09	2	Warning Sticker	N74-9	
-----	301179-04	1	Trademark Sticker	N79-4	
			-----*-----		
8-19	5006-05020-710	2	Self tapping screw	M5*20L,Black Galvanized	
8-20	5009-05020-710	2	Screw	M5*P0.8*20L,Black Galvanized	



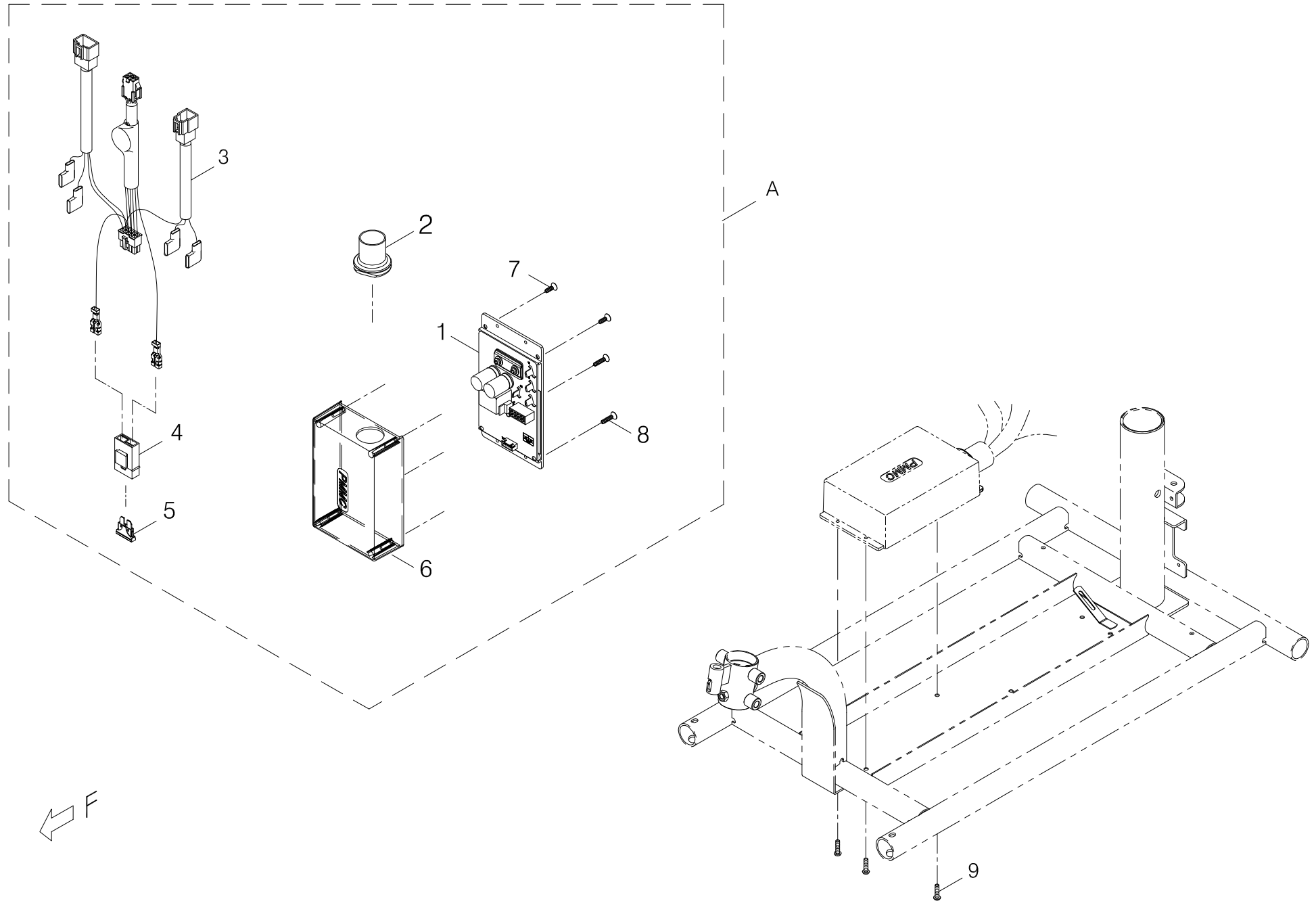
Index NO.	Part NO.	Qty.	Description	Specification	Remark
9-A	103202-69501-50	1	Rear chassis cover assembly	w/decal,GK-8,Black	
9-1	203201-69500-50-A2	1	Rear Chassis Cover	GK-8, Black, A2	
9-2	203103-66500	REF(4)	Velcro	25W*25M,Hook	
9-3	203103-88100	REF(2)	Velcro	50W*25M,Hook	
-----	301123-32	1	Warning Sticker	N23-32	
-----	301166-02	1	CE Mark Label	N66-2	
-----	301174-40	1	Caution label	N74-40, GK-3/4/7/8/8-3/7-3/UL8-W	
-----	301179-04	1	Instruction sticker	N79-4	
-----	301187-16	1	Instruction sticker	N87-16	
-----	301187-13	1	OFF-BRAKE-ON LABEL	N87-13	
-----	301174-45-A2	1	Warning Sticker	N74-45, A2	
-----	301174-69-A2	1	Warning Sticker	N74-69-A2	
			----- * -----		
9-4	203513-69500-50	1	Battery handle	GK-8	
9-5	5006-05025-710	4	Self tapping screw	M5*25L,Black Galvanized	
9-6	5006-05015-710	2	Self Tapping Screw w/ Washer	M5*15L, Black Galvanized	
-----	301211-00-A2	1	Trademark Decal	T11-A2, 100*20	
			----- * -----		
-----	301180-96	1	Decal	N80-96, 90mm*19mm, SHOPRIDER	

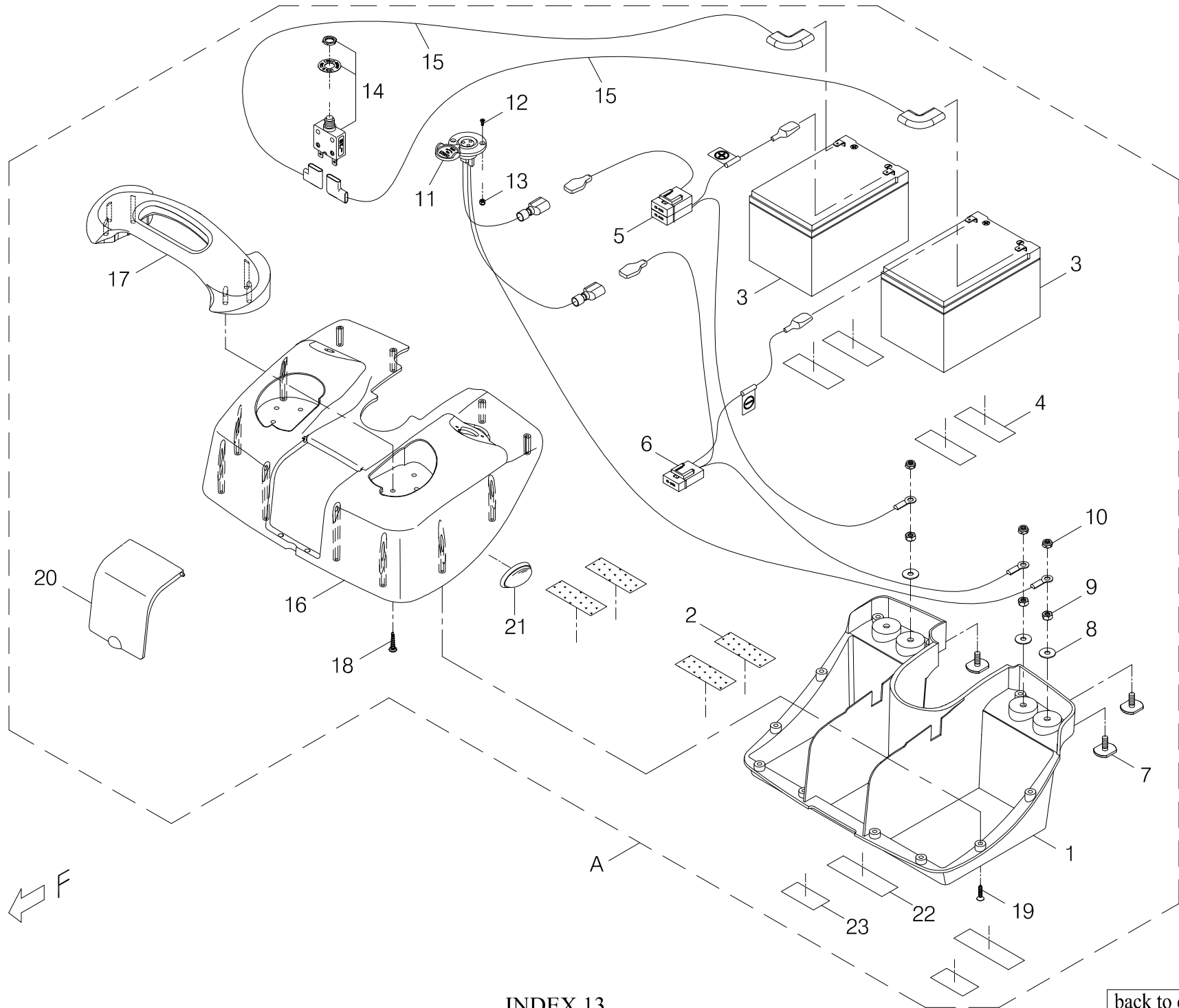


Index NO.	Part NO.	Qty.	Description	Specification	Remark
10	-----		Upper controller		
10-1	106108-66408	1	Potentiometer Assembly	T-bar,5K#3,A144-13	
			----- * -----		
10-2	206122-88103	1	Extension, thottle lever	PVC,Black#2,50mm	
10-3	206122-88105	1	Extension, thottle lever	PVC,Yellow#2,50mm	
10-4	5005-04006-210	2	Philip Screw	M4*P0.7*6L, Multicolor Galvanized	
			----- * -----		
10-5	207010-77200	1	Control cable	GK-3-K	
10-6	206130-88100-A4	1	Battery Gauge	LED, A4	
10-7	206109-88100-A2	1	Variable resistor	B25K(A2)	
10-8	206113-88102-A3	1	Pre-Set Speed Knob	CF-X3-T18	
10-9	206105-88100-A2	1	Horn Switch	Plain Yellow Button	
10-10	206104-88100-A2	1	Horn	LF-PB24W34A-A	
10-11	5006-02010-210	2	Self tapping screw	M2*10L,Multicolored Galvanized	
10-12	106106-88103-A3-1	1	Ignition Key Assembly, Yellow	2-Way Key, 4A 125VAC 2Amp 8212, A3-1	
10-13	4003260-00	1	Spacer	C260(\$ 26* \$ 20*12L)	
10-14	207020-77302	1	Key Switch Kit	UL7-3-R	
			----- * -----		
-----	301111-14	1	Instruction sticker	N11-14	
-----	301220-14-A3	1	Facia Decal	T20-14-A3, for GK3/4, SHOPRIDER Logo	
-----	505201-00940-50	2	Cable Tie	CV-094B	
-----	505201-02000-50	1	Cable Tie	CV-200B	
-----	9004-001	REF	Heat shrink sleeve	F32,3*0.25*200M	

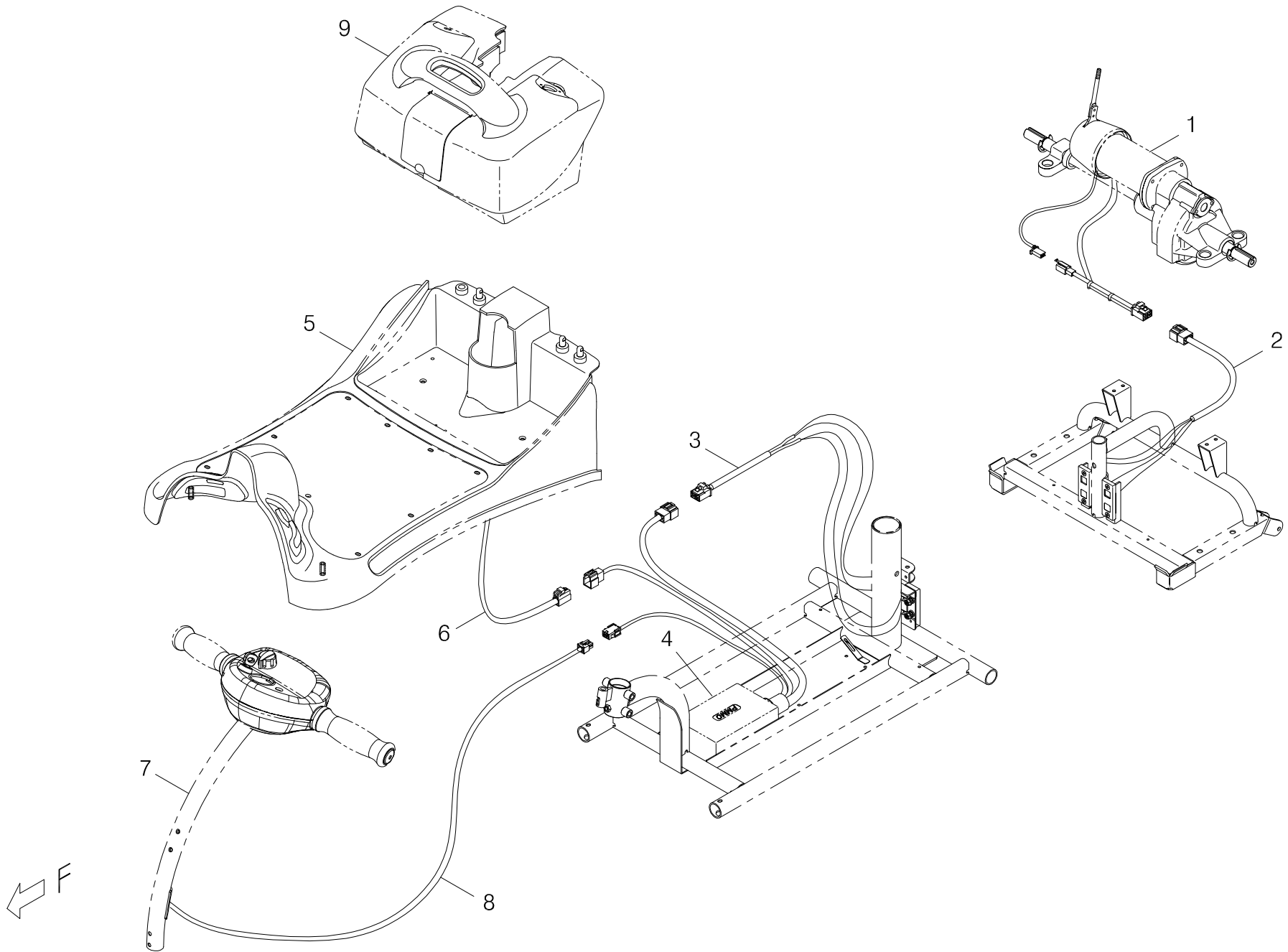


[back to contents](#)

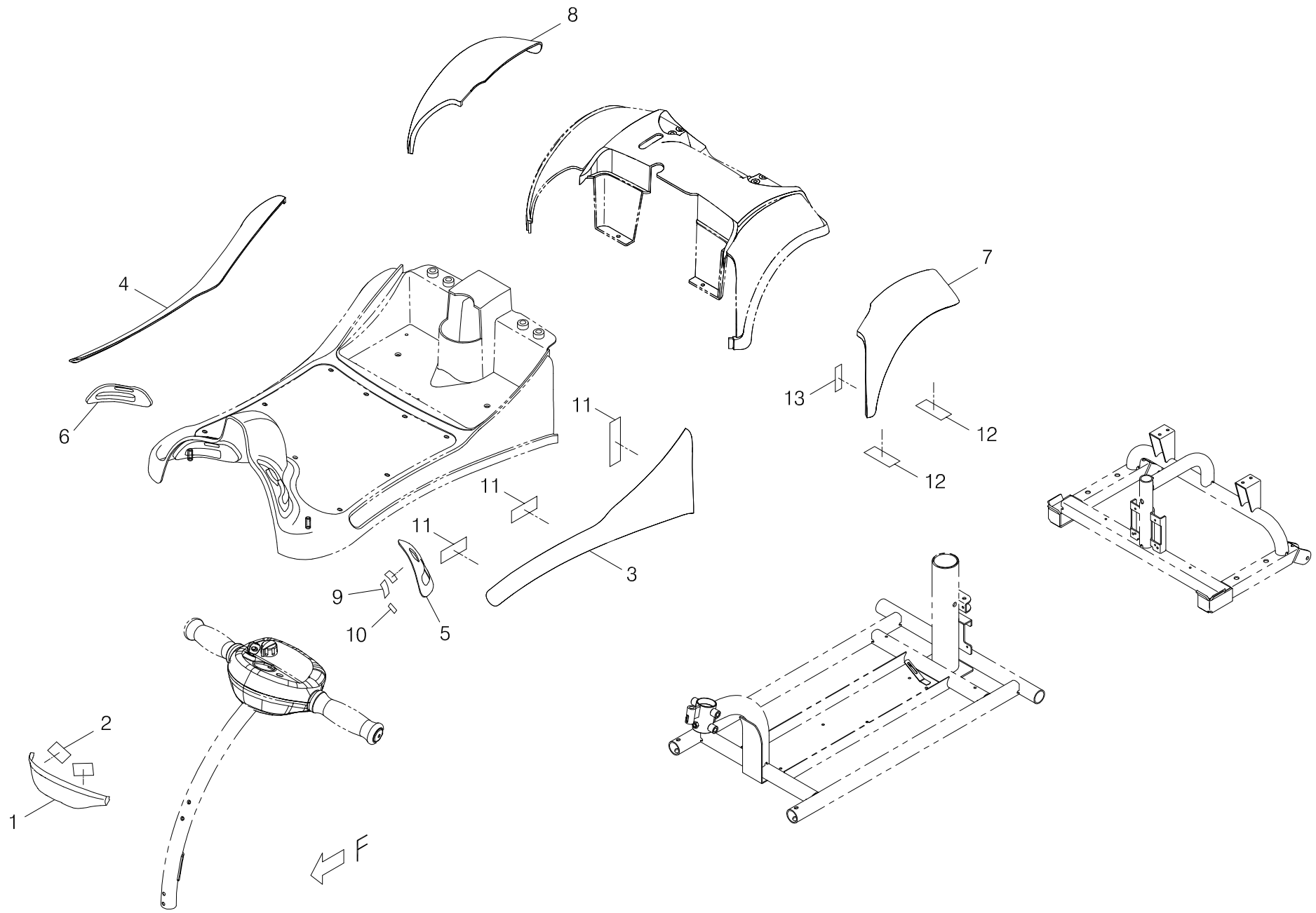




Index NO.	Part NO.	Qty.	Description	Specification	Remark
13-A	800501-695-03	1	SLA Battery Pack, Plain Black	CA08-GK-8, 14Ah*2	
13-1	209923-68900-A2	1	Battery Box	GK-3/4,Lower,A2	
13-2	203103-66500	REF(4)	Velcro	25W*25M,Hook	
13-3	109101-66709-14	2	SLA Battery	12V 14Ah,PIHSIANG	
13-4	203103-80100	4	Velcro	25W*25M,Loop	
13-5	207001-77400	1	Battery Cable	+, GK-4-F3	
-----	-----	REF(1)	Fuse	UL 5A	
-----	-----	REF(1)	Fuse	UL 40A	
13-6	207002-77400	1	Battery cable	GK-4-F2,40A Fuse	
-----	206901-88104	REF(2)	Fuse	UL 40A	
13-7	4003290-10	3	Terminal Contact	C290-10(GK-3/4)	
13-8	5021-06018-210	3	Flat Washer	φ 6*18*1t,Multicolored Galvanized	
13-9	5011-06010-200	3	Hex Nut	M6*P1.0*10*5L,Multicolored Galvanized	
13-10	5012-06010-200	3	Nylon lock nut	M6*P1.0*10*6t,Multicolored Galvanized	
13-11	207006-77200	1	Charge Cable Kit	GK-3-H	
13-12	5009-03010-440	2	Taper Head Philip Screw	M3*P0.5*10L,SUS	
13-13	5012-03006-200	2	Nylon lock nut	M3*P0.5*6,Multicolored Galvanized	
13-14	206207-78700	1	Circuit Breaker	ZE-700S-20A	
13-15	207014-77200	2	Connection cable	GK-3-L	
13-16	209922-69500-50	1	Battery box lid	GK-8,Upper Black	
13-17	203513-69501-50	1	Battery handle	GK-8	
13-18	5006-05020-710	6	Self tapping screw	M5*20L,Black Galvanized	
13-19	5009-04019-710	12	Imperial Screw	5/32"*3/4"L,Black Galvanized	
13-20	203511-68900	1	Charger cover	GK-3/4,Black	



Index NO.	Part NO.	Qty.	Description	Specification	Remark
14	-----		Control and battery wiring illustration		
14-1	-----	REF(1)	Drive-train Assembly		
			----- * -----		
14-2	-----	REF(1)	Motor EXT. cable		
			----- * -----		
14-3	-----	REF(1)	Motor EXT. cable		
			----- * -----		
14-4	-----	REF(1)	Main Control Box Assembly		
			----- * -----		
14-5	-----	REF(1)	Front chassis cover assembly		
14-6	-----	REF(1)	Power Cable		
			----- * -----		
14-7	-----	REF(1)	Tiller Assembly Complete		
14-8	-----	REF(1)	Main Control Box Assembly		
			----- * -----		
14-9	-----	REF(2)	SLA Battery Pack, Plain Black		
			----- * -----		
-----	109201-88613-A2	1	Off-Board Charger for SLA Battery	24V/2A, CP2420. A2	
-----	209201-88200	1	Power cord	North America,Asia,(2A)	



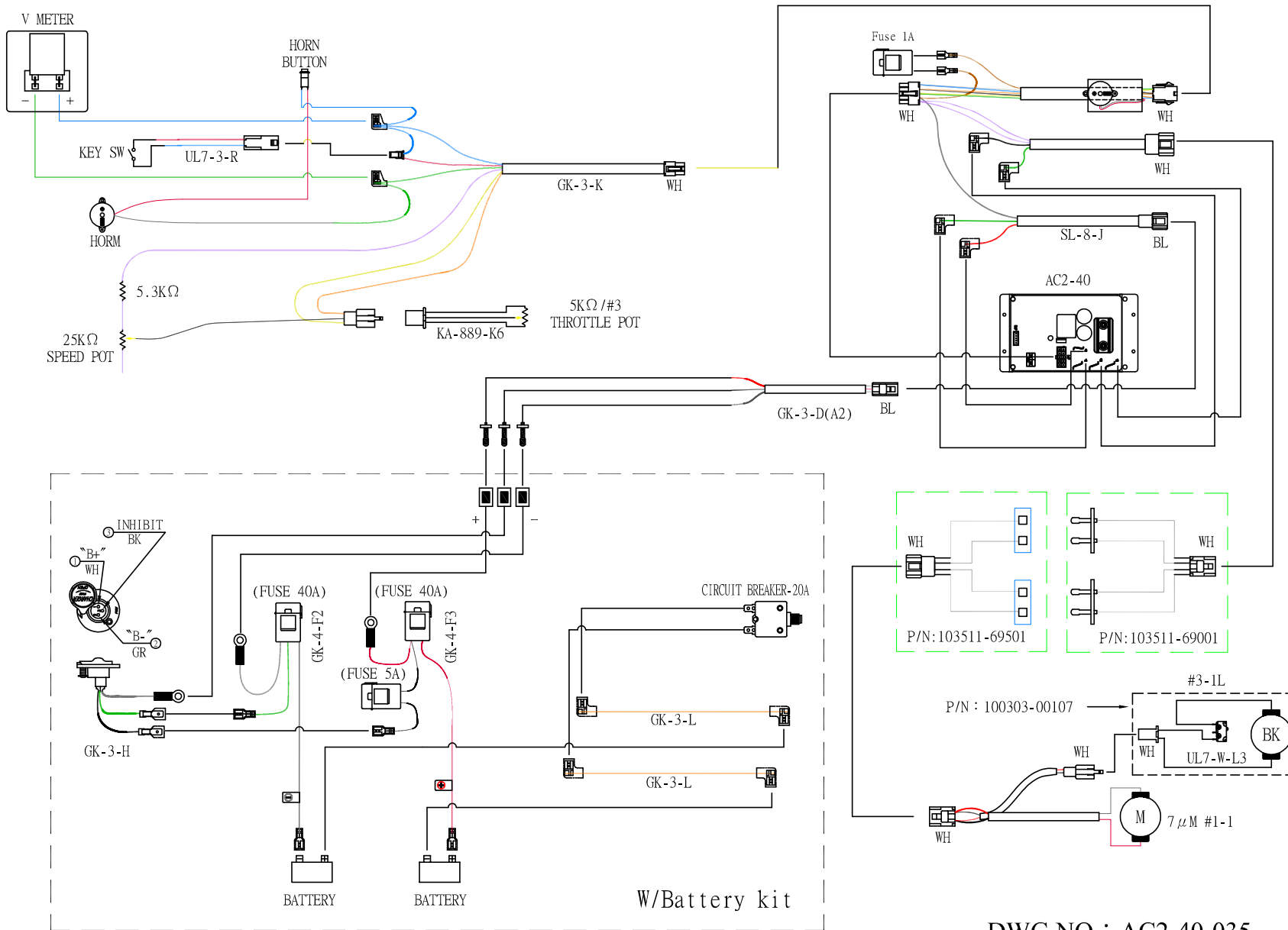
Index NO.	Part NO.	Qty.	Description	Specification	Remark
15	800904-69501-22	1	Shroud Pairs Kit	TE-GK8-3,Red	
15-1	103301-69500-22	1	Front tiller cover assembly	GK-8,Burgundy	
15-2	203103-80100	REF(2)	Velcro	25W*25M,Loop	
15-3	103501-69500-22	1	Front Protection Cover, Left	GK-8,Burgundy Red	
15-4	103502-69500-22	1	Front Protection Cover, Right	GK-8,Burgundy Red	
15-5	103505-69501-22	1	Protection Cover for Footrest	GK8-3,Burgundy	
15-6	103505-69502-22	1	Protection Cover for Footrest	GK8-3,Burgundy	
15-7	103510-69500-22	1	Rear Protection Cover, Left	GK-8,Burgundy Red	
15-8	103510-69501-22	1	Rear Protection Cover, Right	GK-8,Burgundy Red	
15-9	203103-80100	REF(4)	Velcro	25W*25M,Loop	
15-10	203103-80100	REF(2)	Velcro	25W*25M,Loop	
15-11	203103-80100	REF(6)	Velcro	25W*25M,Loop	
15-12	203103-80100	REF(4)	Velcro	25W*25M,Loop	
15-13	203103-66400	REF(2)	Velcro	50W*25M,Loop	
			-----*		
15	800904-69501-4A	1	Shroud Pairs Kit	TE-GK8-3,BLUE	
15-1	103301-69500-4A	1	Front tiller cover assembly	GK-8,Blue	
15-2	203103-80100	REF(2)	Velcro	25W*25M,Loop	
15-3	103501-69500-4A	1	Front Protection Cover, Left	GK-8,Blue	
15-4	103502-69500-4A	1	Front Protection Cover, Right	GK-8,Blue	
15-5	103505-69501-4A	1	Protection Cover for Footrest	GK8-3,Blue	
15-6	103505-69502-4A	1	Protection Cover for Footrest	GK8-3,Blue	

Index NO.	Part NO.	Qty.	Description	Specification	Remark
15-7	103510-69500-4A	1	Rear Protection Cover, Left	GK-8,Blue	
15-8	103510-69501-4A	1	Rear Protection Cover, Right	GK-8, Right, Blue	
15-9	203103-80100	REF(4)	Velcro	25W*25M,Loop	
15-10	203103-80100	REF(2)	Velcro	25W*25M,Loop	
15-11	203103-80100	REF(6)	Velcro	25W*25M,Loop	
15-12	203103-80100	REF(4)	Velcro	25W*25M,Loop	
15-13	203103-66400	REF(2)	Velcro	50W*25M,Loop	
			-----*-----		
15	800904-69501-67	1	Chassis Cover Assembly	GK8-3, Champagne Silver	
15-1	103301-69500-67	1	Front Tiller Cover	GK-8, Champagne Silver	
15-2	203103-80100	REF(2)	Velcro	25W*25M,Loop	
15-3	103501-69500-67	1	Front Protection Cover	GK-8, Left, Champagne Silver	
15-4	103502-69500-67	1	Front Protection Cover	GK-8, Right, Champagne Silver	
15-5	103505-69501-67	1	Protection Cover for Footrest	GK8-3, Champagne Silver, Left	
15-6	103505-69502-67	1	Protection Cover for Footrest	GK8-3, Champagne Silver, Right	
15-7	103510-69500-67	1	Rear Protection Cover, Left	GK-8, Champagne Silver	
15-8	103510-69501-67	1	Rear Protection Cover, Right	GK-8, Champagne Silver	
15-9	203103-80100	REF(4)	Velcro	25W*25M,Loop	
15-10	203103-80100	REF(2)	Velcro	25W*25M,Loop	
15-11	203103-80100	REF(6)	Velcro	25W*25M,Loop	
15-12	203103-80100	REF(4)	Velcro	25W*25M,Loop	
15-13	203103-66400	REF(2)	Velcro	50W*25M,Loop	

Wiring Diagram for TE-GK8-3

Color Synopsis

- BL:BLUE
- BK:BLACK
- RD:RED
- YL:YELLOW
- OR:ORANGE
- VI:PURPLE
- GR:GREEN
- GY:GRAY
- WH:WHITE
- BR:Brown
- PK:Pink
- LB:Light Blue



DWG.NO : AC2-40-035
 EDITION : A0

All Stickers and Decals shown as below and used on TE-GK8-3



301111-14



301123-30-A2



301123-21-A2



301123-32



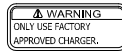
301123-52



301123-28



301166-02



301174-16



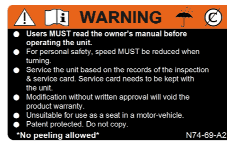
301174-40



301174-74



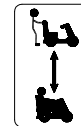
301174-45-A2



301174-69-A2



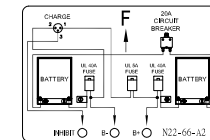
301179-04



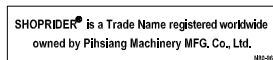
301187-13



301187-16



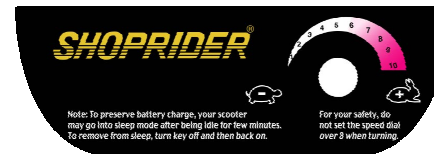
301122-66-A2



301180-96



301211-00-A2



301220-14-A3



301213-38