



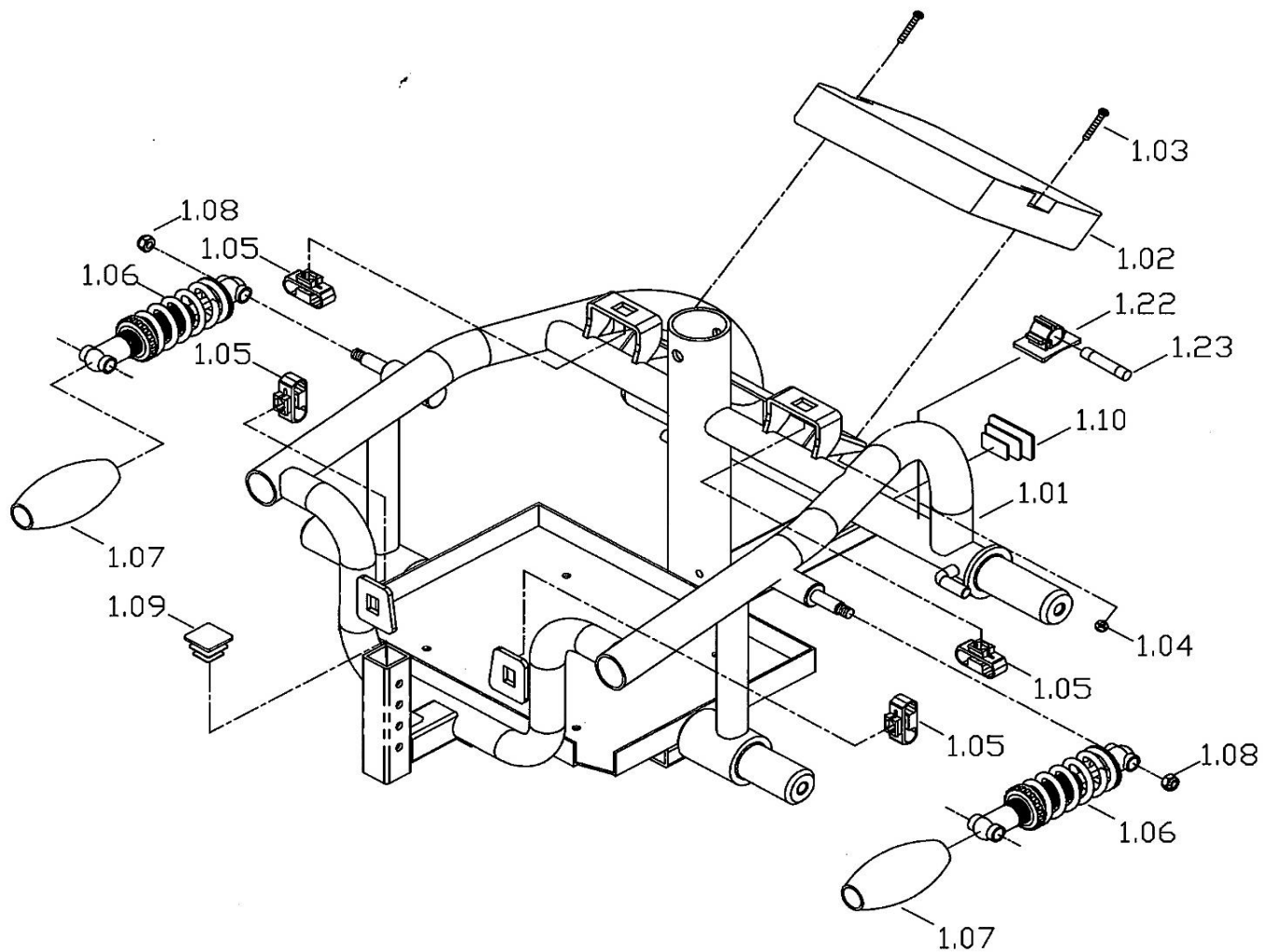
# ***SPYDER***

**P326A**

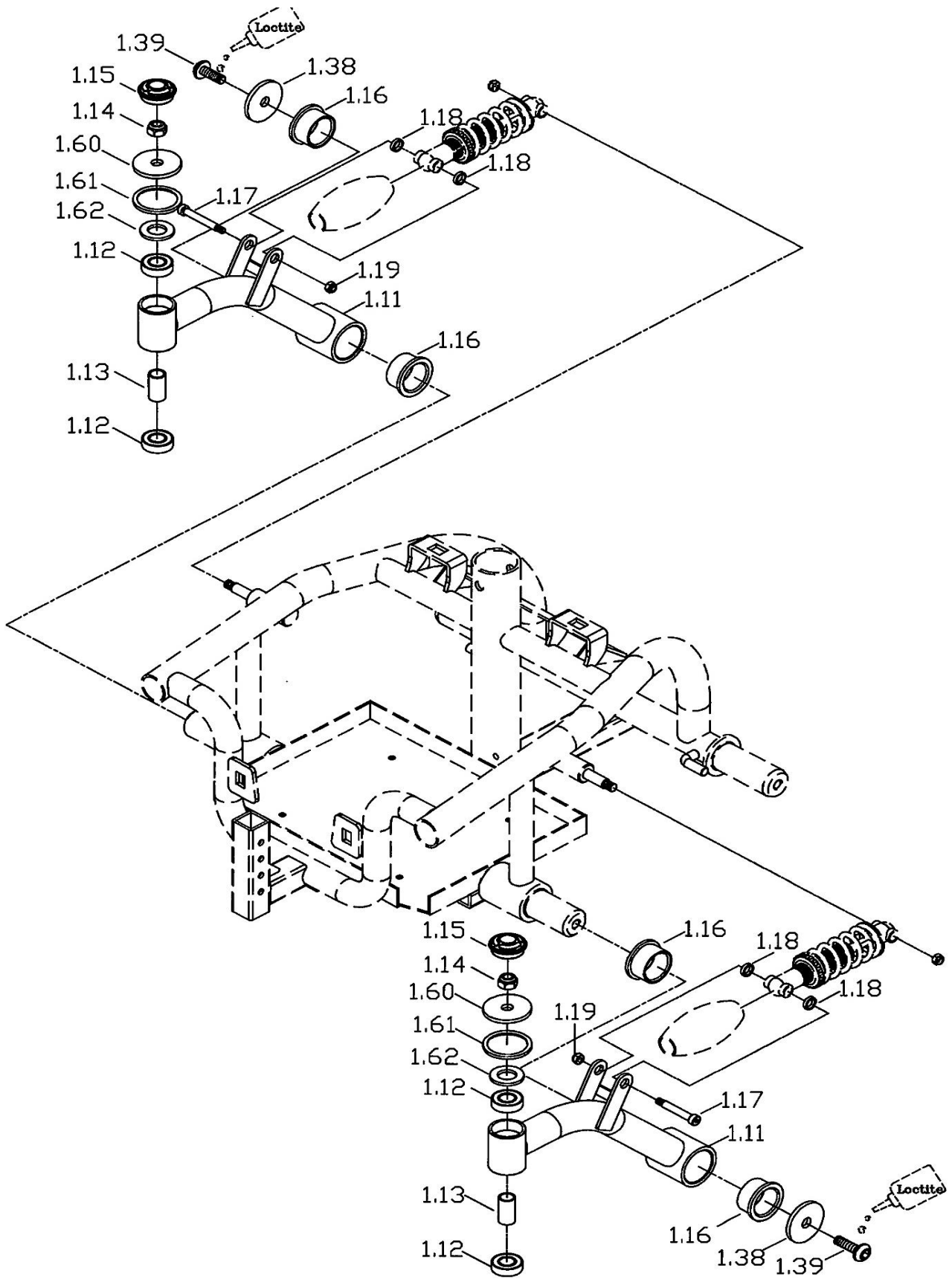
**Parts Manual**

## Table of Contents

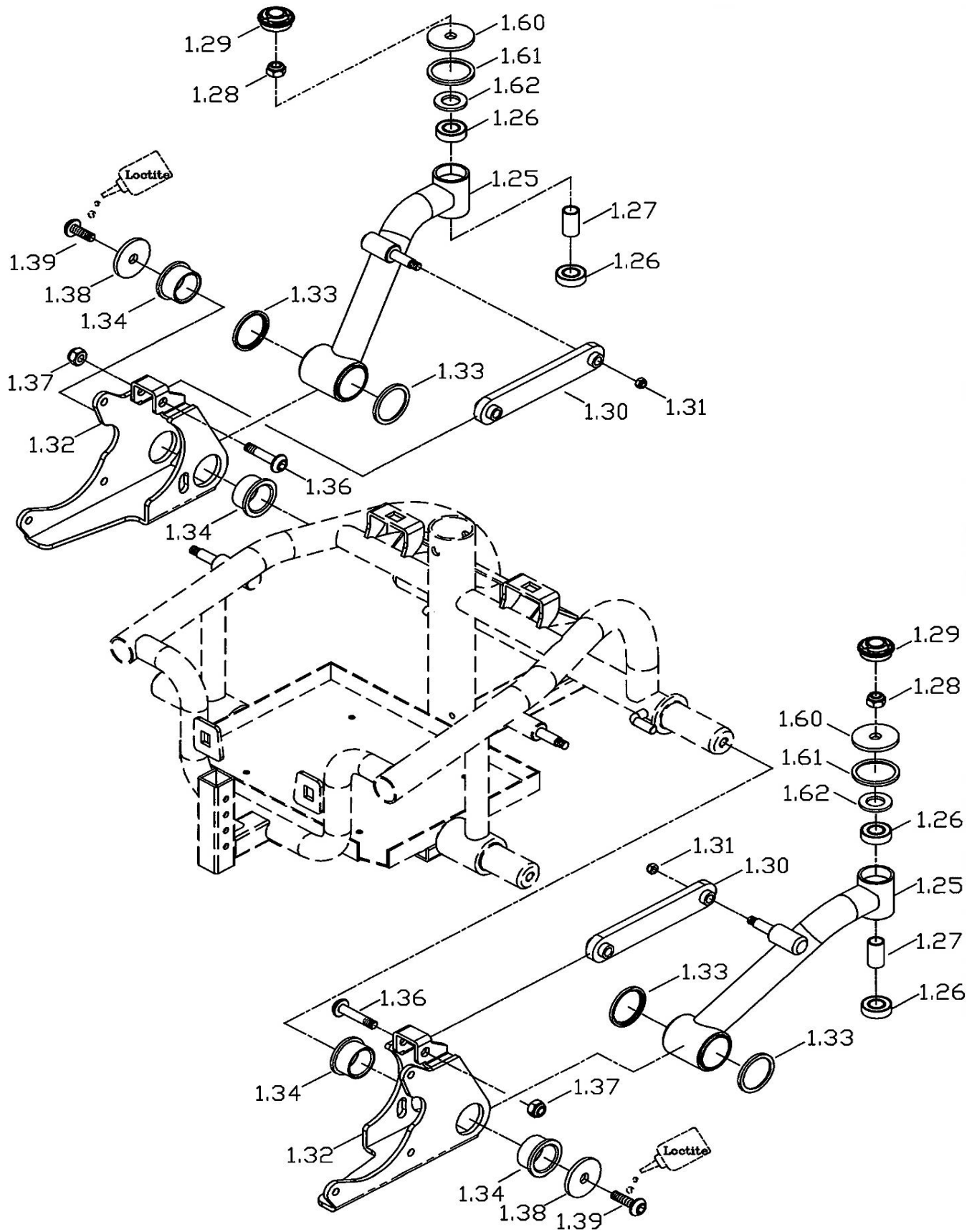
<u>Page Description</u>	<u>Pages</u>
Main Frame Assm Diagram	1
Main Frame Assm Part Listing	2
Front Anti-Tipper Arm Assm Diagram	3
Front Anti-Tipper Arm Assm Part Listing	4
Rear Anti-Tipper Arm Assm Diagram	5
Rear Anti-Tipper Arm Assm Part Listing	6
Shroud Assm Diagram	7
Shroud Assm Part Listing	8
Armrest Assm Diagram	9
Armrest Assm Part Listing	10
Seat Post Assm Diagram	11
Seat Post Assm Part Listing	12
Seat Plate Assm Diagram	13
Seat Plate Assm Part Listing	14
Seat Assm Diagram	15
Seat Assm Part Listing	16
Motor & Transaxle Assm Diagram	17
Motor & Transaxle Assm Part Listing	18
Raer Wheel Assm Diagram	19
Rear Wheel Assm Part Listing	20
Controller Assm Diagram	21
Controller Assm Part Listing	22
Main Control Cables Diagram	23
Main Control Cables Part Listing	24
Battery Cables Diagram	25
Battery Cables Part Listing	26
Charger Diagram	27
Charger Part Listing	28
Caster with Fork Assm Diagram	29
Caster with Fork Assm Part Listing	30
Footrest Assm Diagram	31
Footrest Assm Part Listing	32
Seat Belt Diagram	33
Seat Belt Part Listing	34



Index No.	Part No.	Description	QTY
1.01	30203077	MAIN FRAME ONLY, P326A , SHARK	1
1.02	64210010	CONTROLLER ONLY, SHARK, DK-PMB40	1
1.03	50104035	SCREW, PPH, BZ, M4*25L	2
1.04	53204002	NYLON NUT, BZ, M4*P0.7	2
1.05	43600540	CLIP, SNAP-IN POM $\phi$ 6.3*25.4L	4
1.06	41700555	ABSORBER 145L 180LBS/IN, GRAY, P326A	2
1.07	46700078	ANTI-DUST CLOTH TO COVER THE SUSPENSION, BLACK,P326	2
1.08	53208010	NYLON NUT, M8	2
1.09	43600377	PLUG,RECTANGLE,1"	1
1.10	43690236	PLUG,RECTANGLE	1
1.22	61210005	PUSH TIE-MOUNT(ADJUST- ABLE AP-0810)	1
1.23	61120021	FUSE, 40A	1

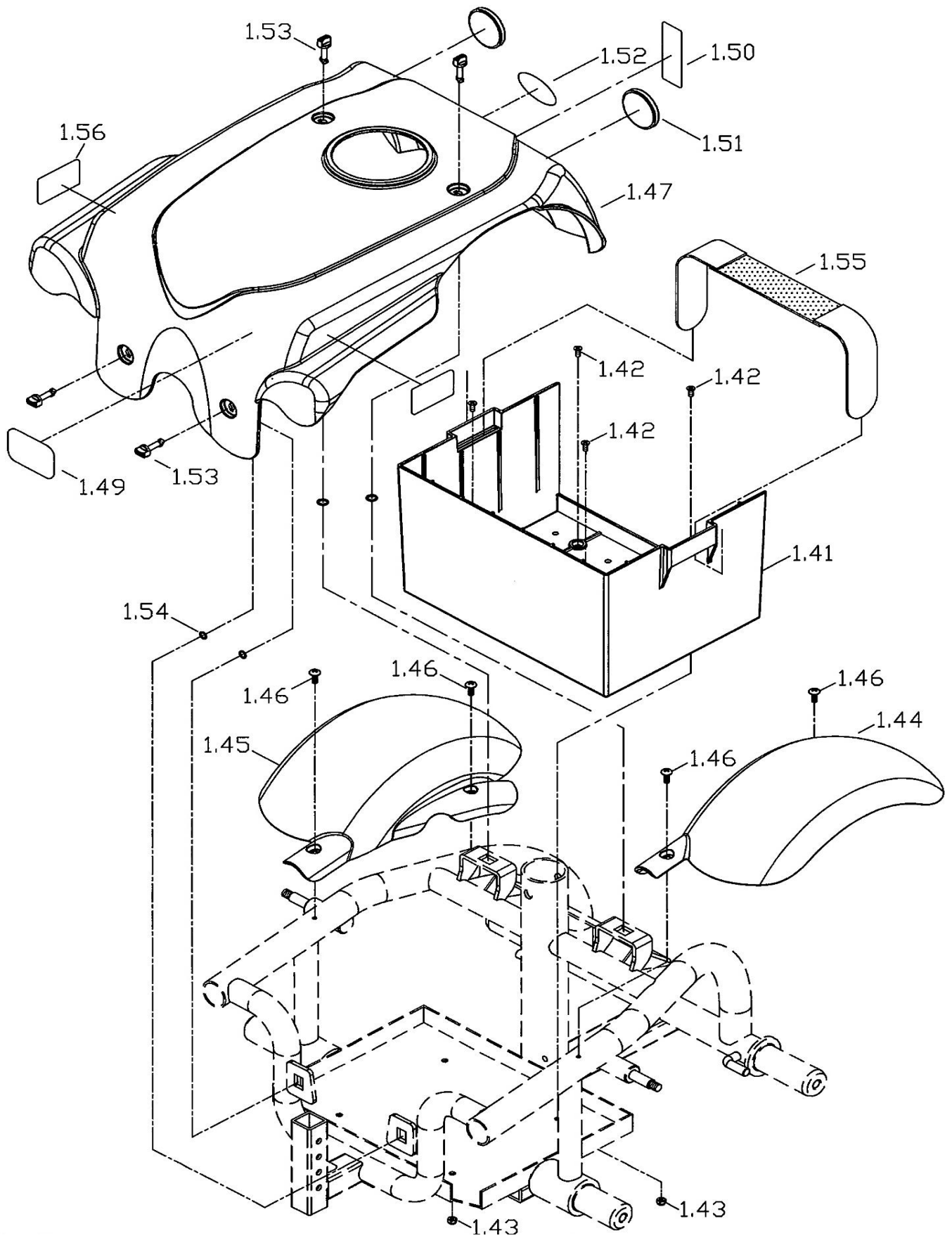


Index No.	Part No.	Description	QTY
1.11	34103192	ANTI-TIPPER ARM ONLY, FRONT, LH, P326A	1
	34103194	ANTI-TIPPER ARM ONLY, FRONT, RH, P326A	1
1.12	53400009	BEARING, 6001, $\phi 12 * \phi 28$	2
1.13	41300417	SPACER, $\phi 15.88 * 1.4T * 15L$	1
1.14	53242008	NYLON NUT, M12*1.25*12H	1
1.15	43600517	CAP,END, 34* $\phi 29 * 15L$	2
1.16	43640006	BUSHING, DELRIN, BLACK	2
1.17	51108821	BOLT, OD10*37L(M8), BZ, G12.9	2
1.18	53100041	WASHER, NYLON, BLACK, $\phi 18 * \phi 10.4 * 2.7T$	4
1.19	53208015	NYLON NUT, BLACK, M8*P-1.25	2
1.38	41200574	WASHER, OD42*ID10.2*3T, ED BLACK	2
1.39	51210014	SCREW, BHSCS, M10*20L*P1.5 ,BZ	2
1.60	53100100	WASHER, $\phi 26 * \phi 12 * 2.0T$	2
1.61	53700540	O-RING	2
1.62	53100003	WASHER, M13*2.0T( $\phi 19$ )	2

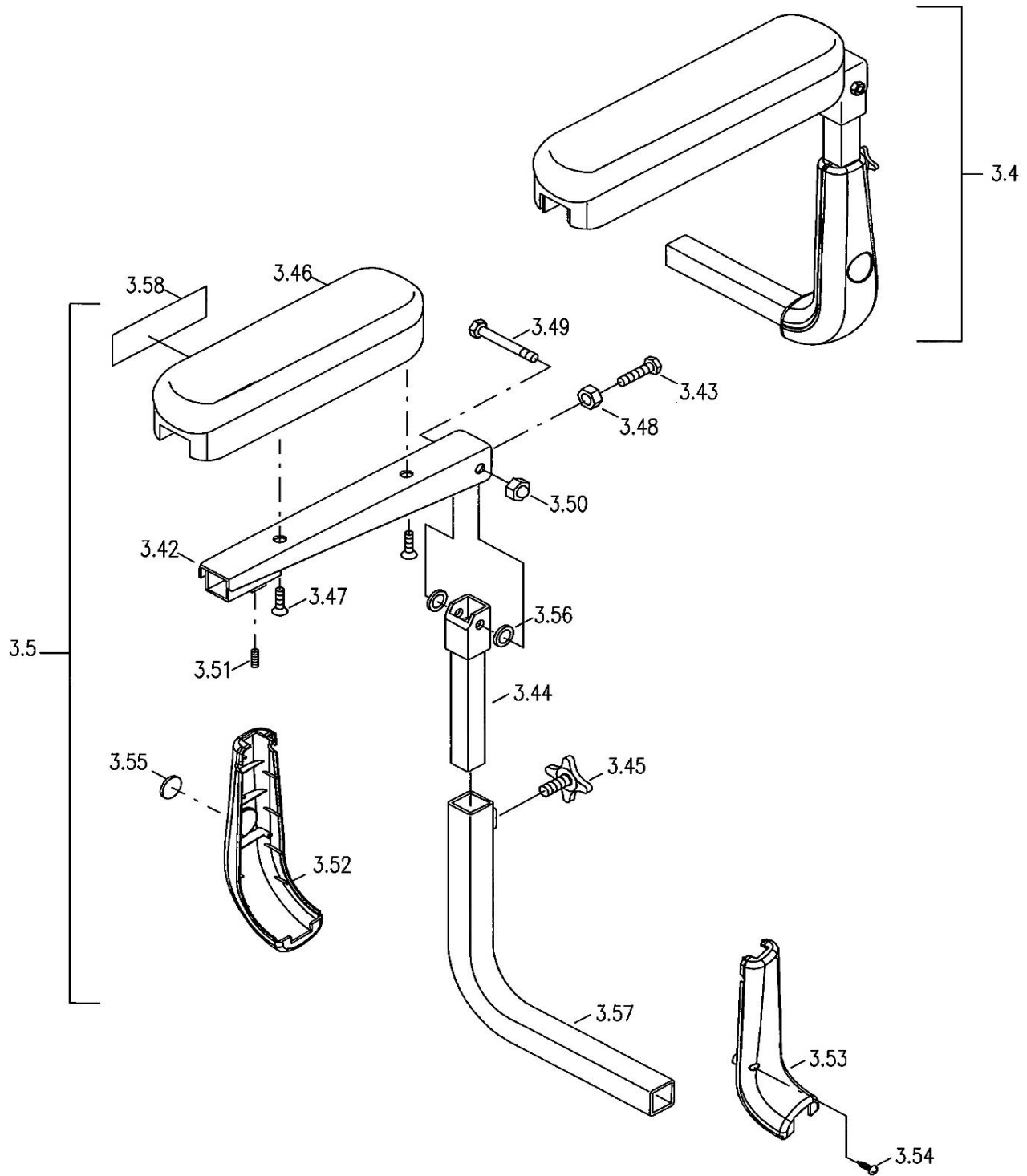


Index No.	Part No.	Description	QTY
1.25	34103197	ANTI-TIPPER ARM ONLY, REAR, LH, P326A	1
	34103202	ANTI-TIPPER ARM ONLY, REAR, RH, P326A	1
1.26	53400009	BEARING, 6001, $\phi 12 * \phi 28$	2
1.27	41300417	SPACER, $\phi 15.88 * 1.4T * 15L$	1
1.28	53242008	NYLON NUT, M12*1.25*12H	1
1.29	43600517	CAP,END, 34* $\phi 29 * 15L$	1
1.30	34103177	LINK PLATE, ED, P326A	1
1.31	53208012	NUT, NYLON, M8*P1.25, BZ	1
1.32	34103199	MOTOR MOUNT BRACKET ONLY, LH, P326	1
	34103204	MOTOT MOUNT BRACKET ONLY, RH, P326	1
1.33	43600712	BEARING FLANGE DELRIN, OD44*3T, BLACK	2
1.34	43640006	BUSHING, DELRIN, BLACK	2
1.36	51210012	SCREW, M10*50L	1
1.37	53210007	NUT, NYLON, M10*P15, BZ	1
1.38	41200574	WASHER, OD42*ID10.2*3T, ED BLACK	4
1.39	51210014	SCREW, BHSCS, M10*20L*P1.5, BZ	4
1.60	53100100	WASHER, $\phi 26 * \phi 12 * 2.0T$	2
1.61	53700540	O-RING	2
1.62	53100003	WASHER, M13*2.0T( $\phi 19$ )	2

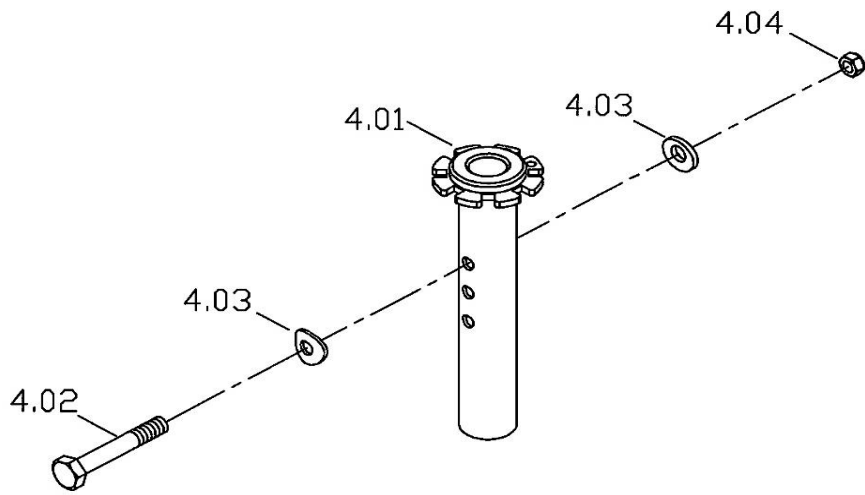




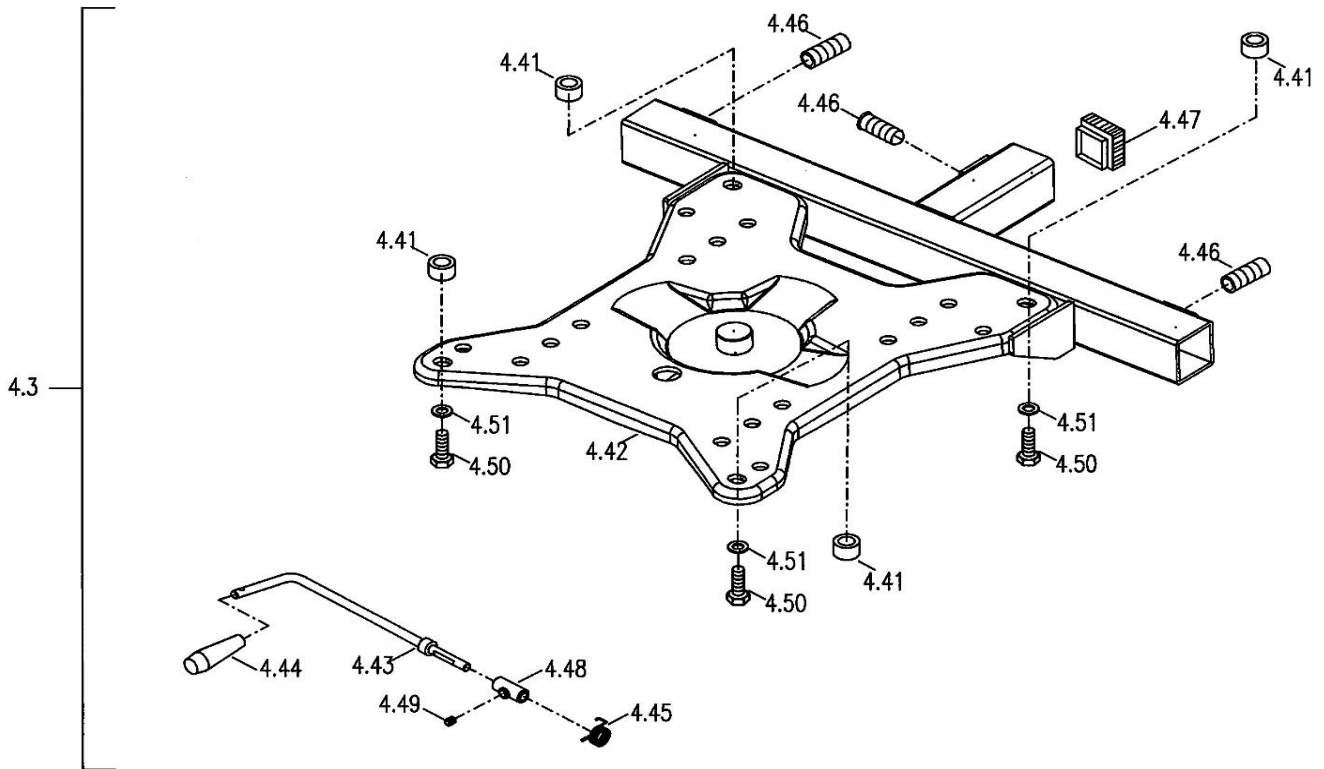
Index No.	Part No.	Description	QTY
1.41	43600713	BATTERY PACK, BLACK,P326	1
1.42	50205032	SCREW, M5*12, BK	4
1.43	53205007	NYLON NUT,M5, BZ	4
1.44	30510893	FENDER, CANDY APPLE RED, LH	1
	30515984	FENDER, BLUE, LH , P326A	1
1.45	30510894	FENDER, CANDY APPLE RED, RH	1
	30515985	FENDER, BLUE, RH , P326A	1
1.46	50604004	SCREW, M4*10L, BLACK	4
1.47	43601051	MAIN SHROUD ONLY, BLACK, P326A	1
1.49	75130707	DECAL, "MAX. WEIGHT CAPACITY" (300LBS/135KG)	1
1.50	75134601	DECAL, RELEASE LEVER	1
1.51	43600622	REFLECTOR, RED	2
1.52	75171182	LABLE, ECLIPSE	1
1.53	43600568	PLASTIC FASTEN BOLT, BLACK,1/4",DIA 6.3*21.6L	4
1.54	53790017	O-RING, BLACK, NEOPRENE, $\phi$ 7.6* $\phi$ 3.8*1.9T	4
1.55	43701080	REUSEABLE FASTENER, 2"* 660MML, BLACK	1
1.56	75171277	STICKER, 100.25L	2



Index No.	Part No.	Description	QTY
3.4	31000257	ARMREST ASS'Y LH.	1
3.5	31000258	ARMREST ASS'Y RH.	1
3.42	31003016	BRACKET, ARMPAD, LH	1
	31003018	BRACKET, ARMPAD, RH	1
3.43	50308022	CAP SCREW,M8*43L	2
3.44	31003019	HEIGHT ADJ,INNER TUBE, LH/RH	2
3.45	43600317	KNOB, M8*15L	2
3.46	43701072	PAD, ARMREST(LONG),BLACK	1
	43701073	PAD,ARMREST(SHORT),BLACK	1
3.47	51306002	SCREW M6*25L	4
3.48	53208008	NUT, M8*P1.25	2
3.49	51008009	HEX. SCREW, M8*30	2
3.50	53208004	NYLON CAP-NUT,M8,BLACK.	2
3.51	50708006	SET SCREW, M8*10L(NYLON PATCH)	1
3.52	43610500	PROTECTIVE SHROUD (L),ARMREST, ABS, BLACK	1
	43610501	PROTECTIVE SHROUD (R),ARMREST, ABS, BLACK	1
3.53	43610502	PROTECTIVE COVER (L),ARMREST, ABS, BLACK	1
	43610503	PROTECTIVE COVER (R),ARMREST, ABS, BLACK	1
3.54	51904006	SCREW,M4*15L BLACK	4
3.55	43600546	REFLECTOR,PE146, AMBER	2
3.56	53108008	WASHER, $\phi$ 16* $\phi$ 8.2*1.0T,BZ	2
3.57	31003036	ARM TUBE ONLY, LH	1
	31003037	ARM TUBE ONLY, RH	1
3.58	75171005	LABEL,WARNING,69*24L	1

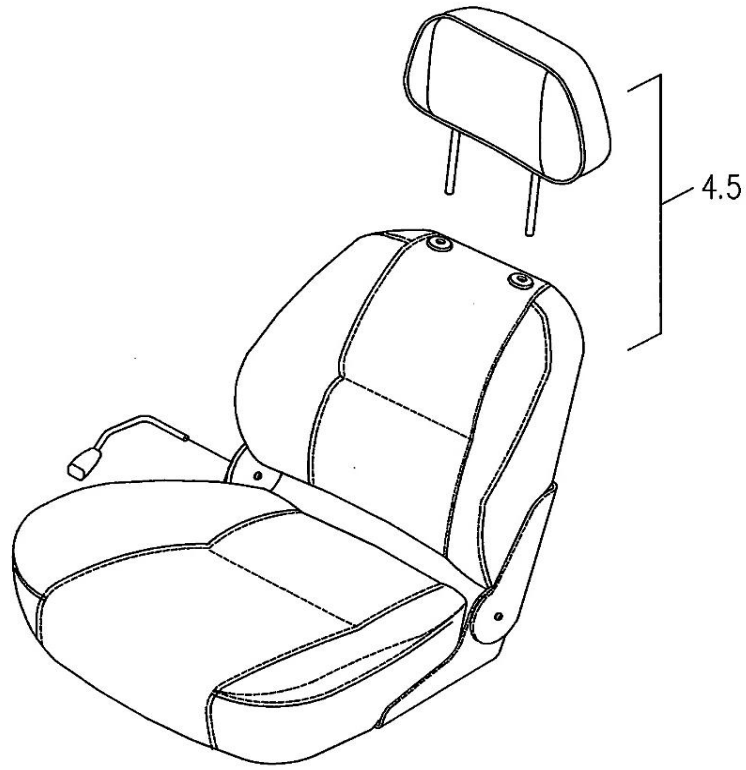


<b>Index No.</b>	<b>Part No.</b>	<b>Description</b>	<b>QTY</b>
4.01	30201081	SEAT POST ONLY, POM, 223MML, 3 HOLES	1
4.02	51010003	HEX.HEAD BOLT, M10*60L	1
4.03	53110001	CONCAVE WASHER, M10	2
4.04	53210003	NYLON NUT, M10*P1.5	1

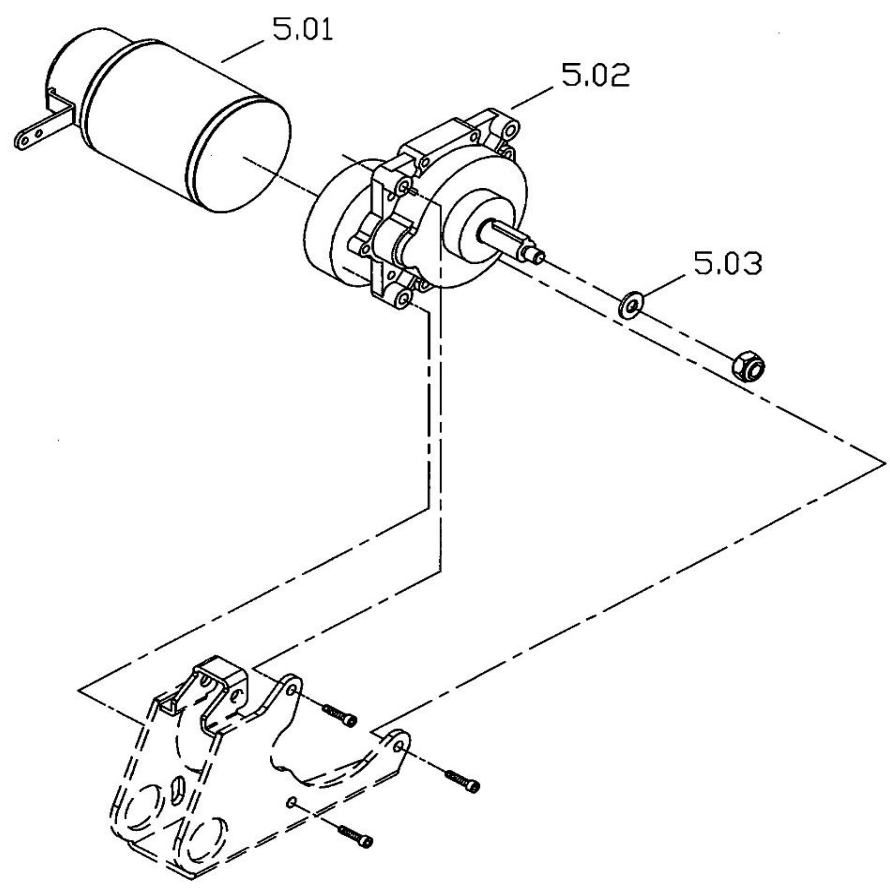
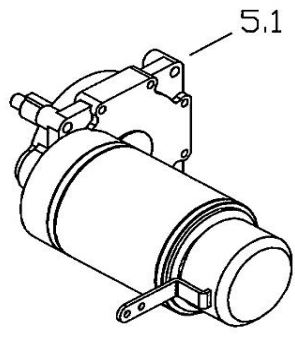


<b>Index No.</b>	<b>Part No.</b>	<b>Description</b>	<b>QTY</b>
4.3	32100124	SEAT BASE ASS'Y	1
4.41	41300149	SPACER, $\phi 25.4 * \phi 8.5 * 10L$	4
4.42	32103017	SEAT BASE, BLACK	1
4.43	24210002	RELEASE LEVER, "L" TYPE	1
4.44	44600060	BLACK TIP,R.LEVER	1
4.45	53500029	TORQUE SPRING,LEVER	1
4.46	50710001	SET SCREW, M10*10L	3
4.47	43600306	PLUG, SQUARE, 30*30	1
4.48	41500007	LOCATING,R.LEVER	1
4.49	50708006	SET SCREW, M8*10L(NYLON PATCH)	1
4.50	51008013	HEX.HEAD BOLT,M8*35	4
4.51	53108013	SPRING WASHER, M8*2.5T( $\phi 15.5$ ), BLACK ZINC	4

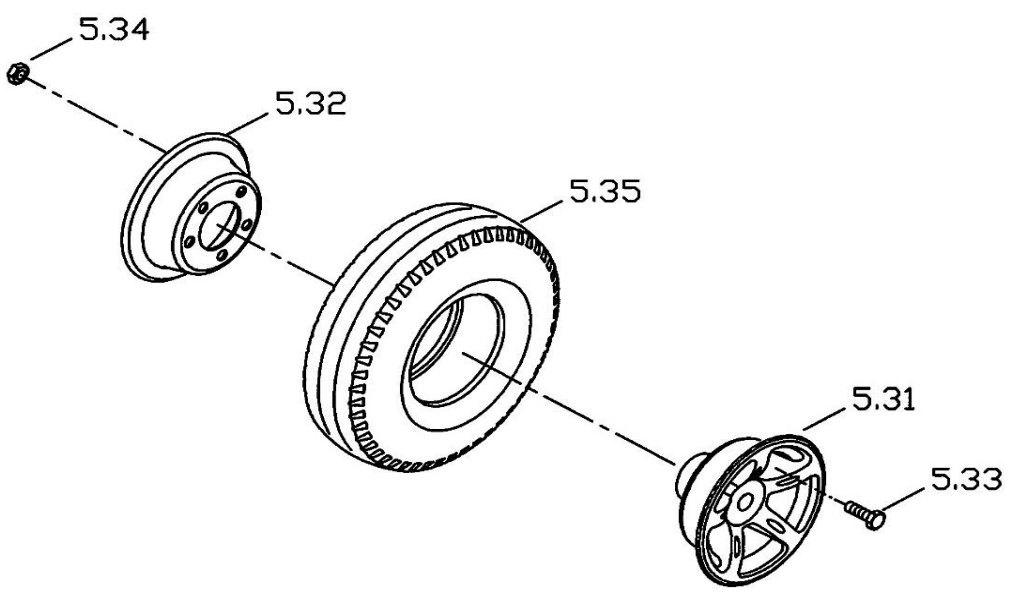
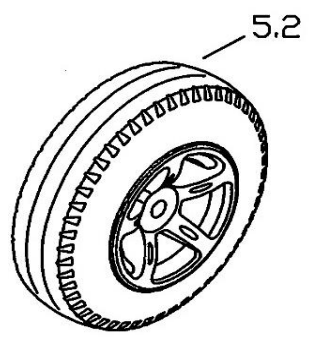




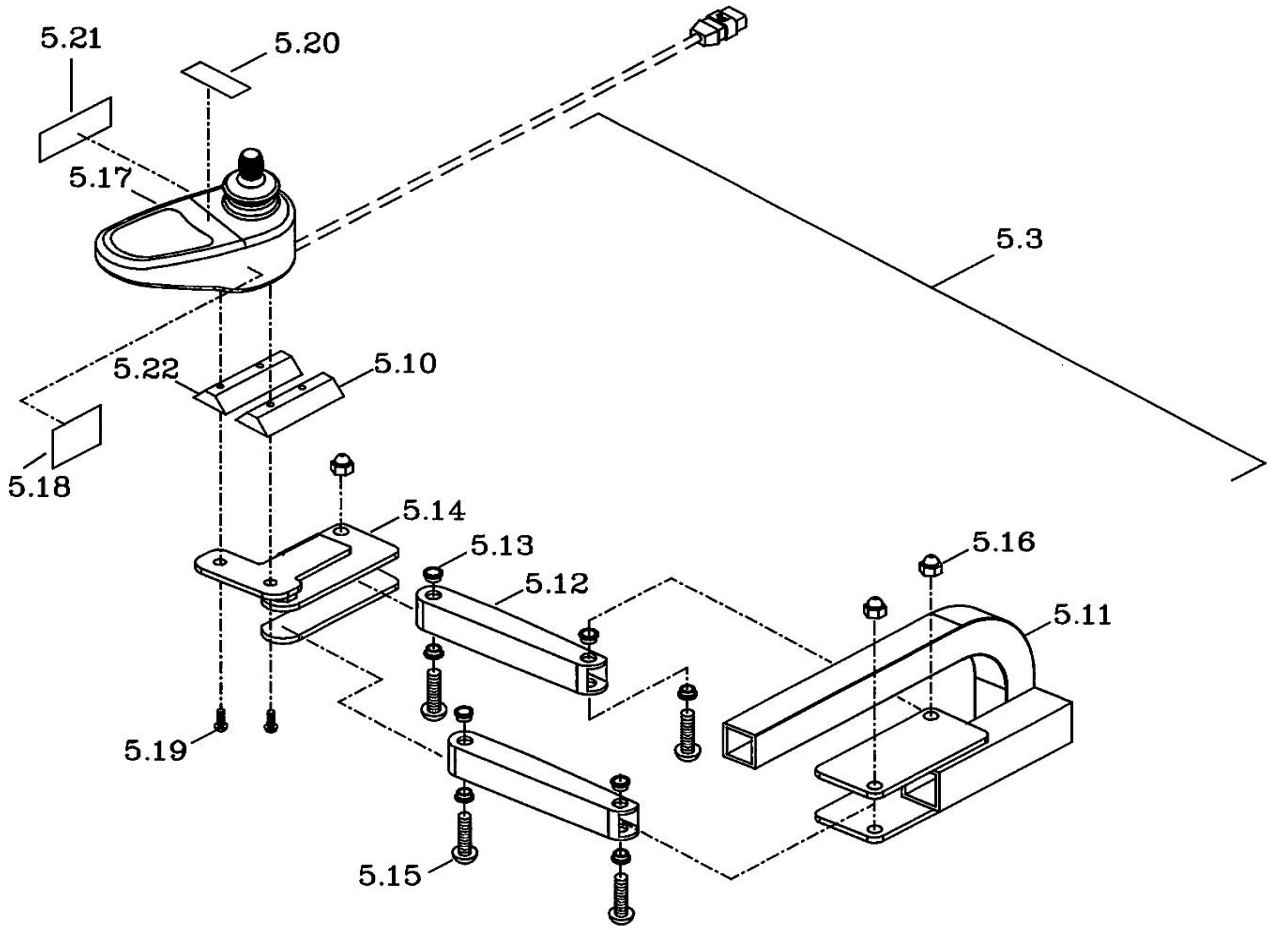
<b>Index No.</b>	<b>Part No.</b>	<b>Description</b>	<b>QTY</b>
4.5	32228051	SEAT ONLY, 18"W*18"D*23"H/BLACK/MC4(WVS)	1



<b>Index No.</b>	<b>Part No.</b>	<b>Description</b>	<b>QTY</b>
5.1	62012010	MOTOR M9M01 LEFT	1
	62022010	MOTOR ONLY, RH, M9CA-3	1
5.01	62112010	MOTOR ONLY, LH, M9CA-3	1
	62122010	MOTOR ,RH.	1
5.02	62409004	GEARBOX ONLY, M9M01	1
5.03	53110005	WASHER, SERRATE, $\varphi 21 * \varphi 10.2 * 3.0T$	2

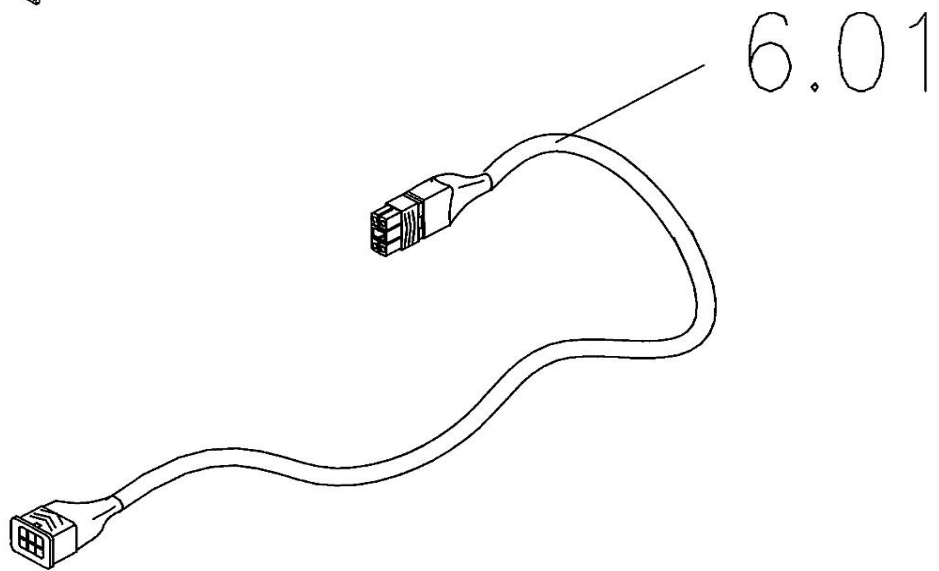
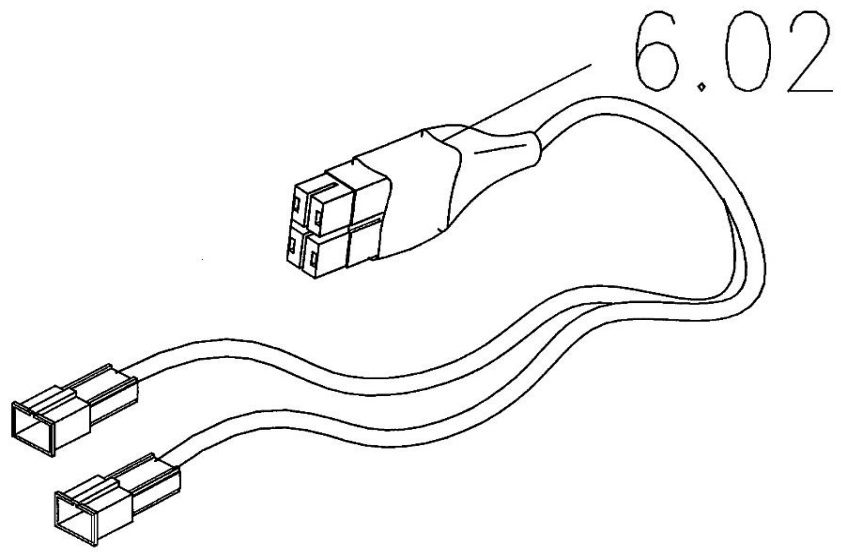


<b>Index No.</b>	<b>Part No.</b>	<b>Description</b>	<b>QTY</b>
5.2	32600467	DRIVE WHEEL ASSY, 3.00-4/PU	2
5.31	42500156	FREEWHEEL ASS'Y., BLACK, 3.00-4	1
5.32	41200535	STEEL CENTER, BLACK, 5 HOLES	1
5.33	51008007	HEX. HEAD BOLT, M8*20L	5
5.34	53208010	NYLON NUT, M8	5
5.35	43600004	TIRE, PU FOAM FILLED, 3.00-4 (260*85) C-248	1

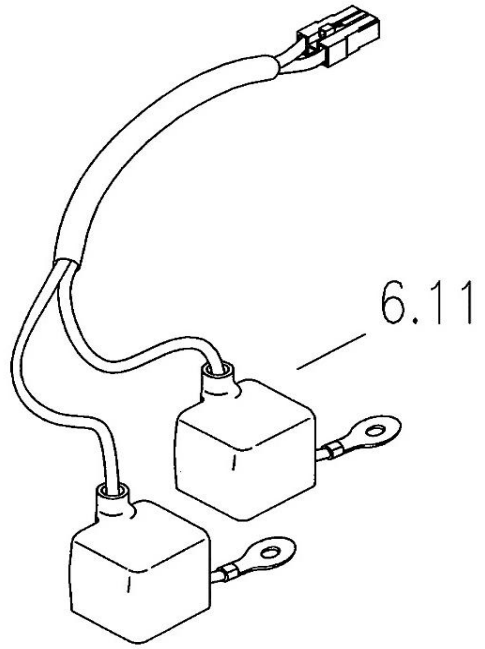
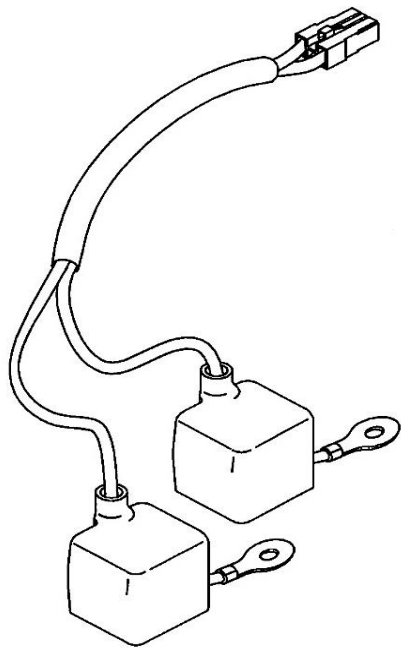


<b>Index No.</b>	<b>Part No.</b>	<b>Description</b>	<b>QTY</b>
5.3	33503064	JOYSTICK BRACKET ASS'Y., SHARK, ED	1
5.10	43600656	SPACER, FLIGHT MOUNT BRACKET, B-1010-089,	2
5.11	34103087	MOUNTING BASE FOR CONTROLLER WELDMENT, RH,	1
5.12	34103036	TUBE ONLY, TOGGLE, ED	2
5.13	53100030	WASHER, NYLON, FLANGE, WHITE, FOR M6	8
5.14	34103088	MOUNTING PLATE WELDMENT, RH, ED, SHARK CONTROLLE	1
5.15	50406010	ALLEN-HEAD SCREW M6*35L	4
5.16	53206005	NUT, NYLON, CAP, M6*P1.0, BZ	4
5.17	64810013	JOYSTICK ONLY, DY SHARK, DK-REMD01	1
5.18	75100121	LABEL, EMC WARNING	1
5.19	50405001	SCREW, BHSCS, M5*P0.8*16L, BZ	2
5.20	75132809	LABEL, READ & FOLLOW, 45*20L	1
5.21	75132808	LABEL, POWER OFF, 63.5*19.1L	1

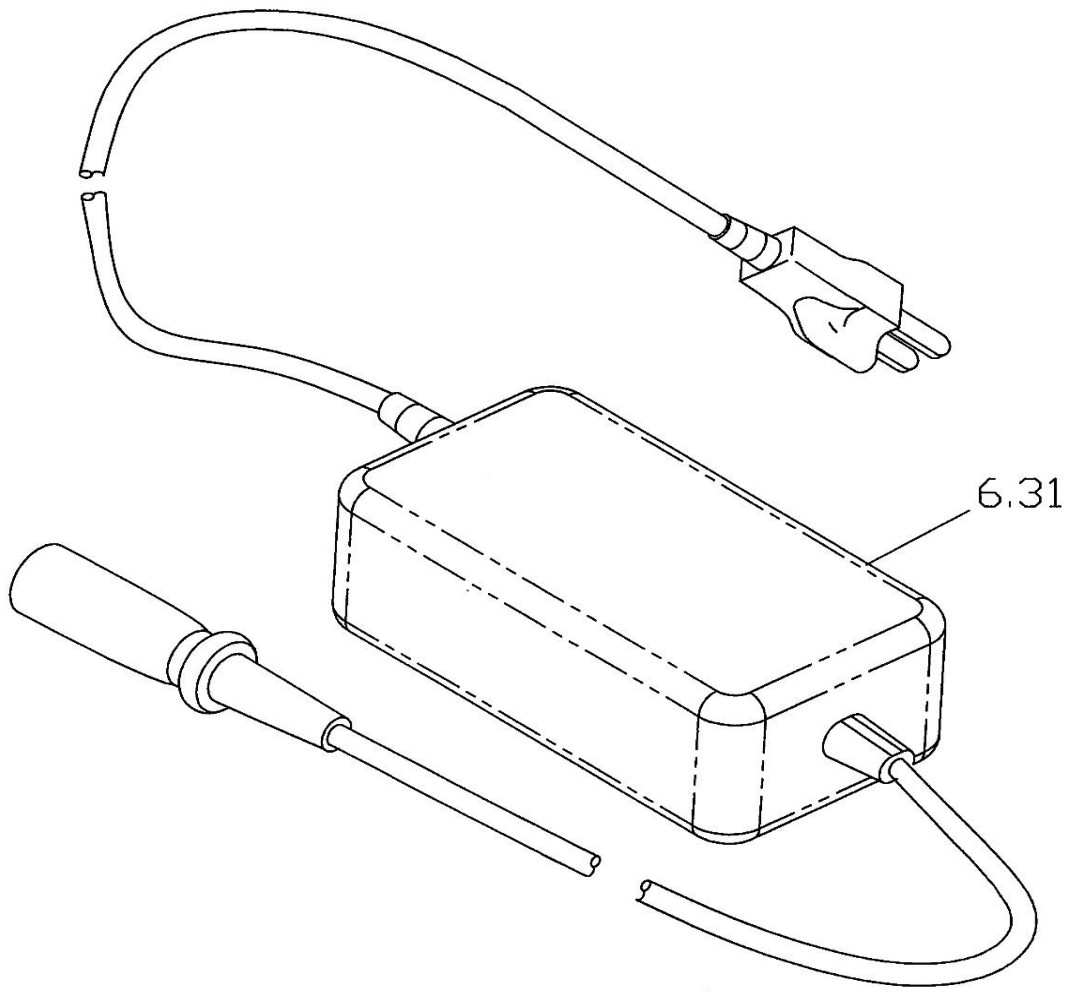




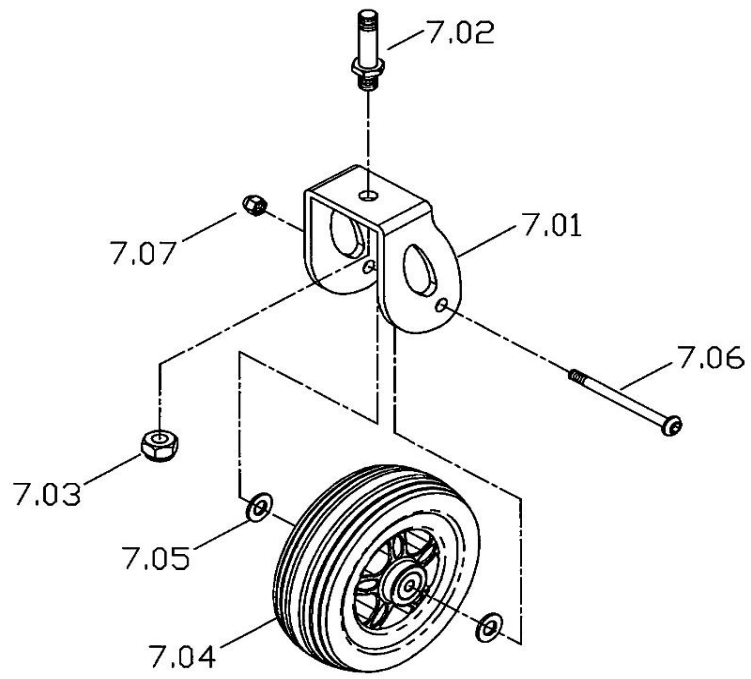
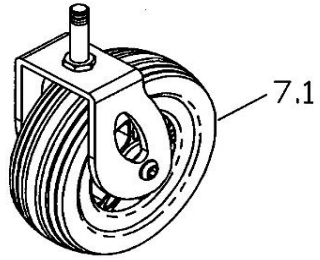
<b>Index No.</b>	<b>Part No.</b>	<b>Description</b>	<b>QTY</b>
6.01	63300042	ELECTRONIC, HARNESS, DY FLIGHT BUS CABLE, 1.5M,	1
6.02	63334601	WIRE, CONTROLLER, 440L, P326	1



<b>Index No.</b>	<b>Part No.</b>	<b>Description</b>	<b>QTY</b>
6.11	63200012	CONNECTING WIRE,BATTERY (INCLUDING 40A FUES)	2

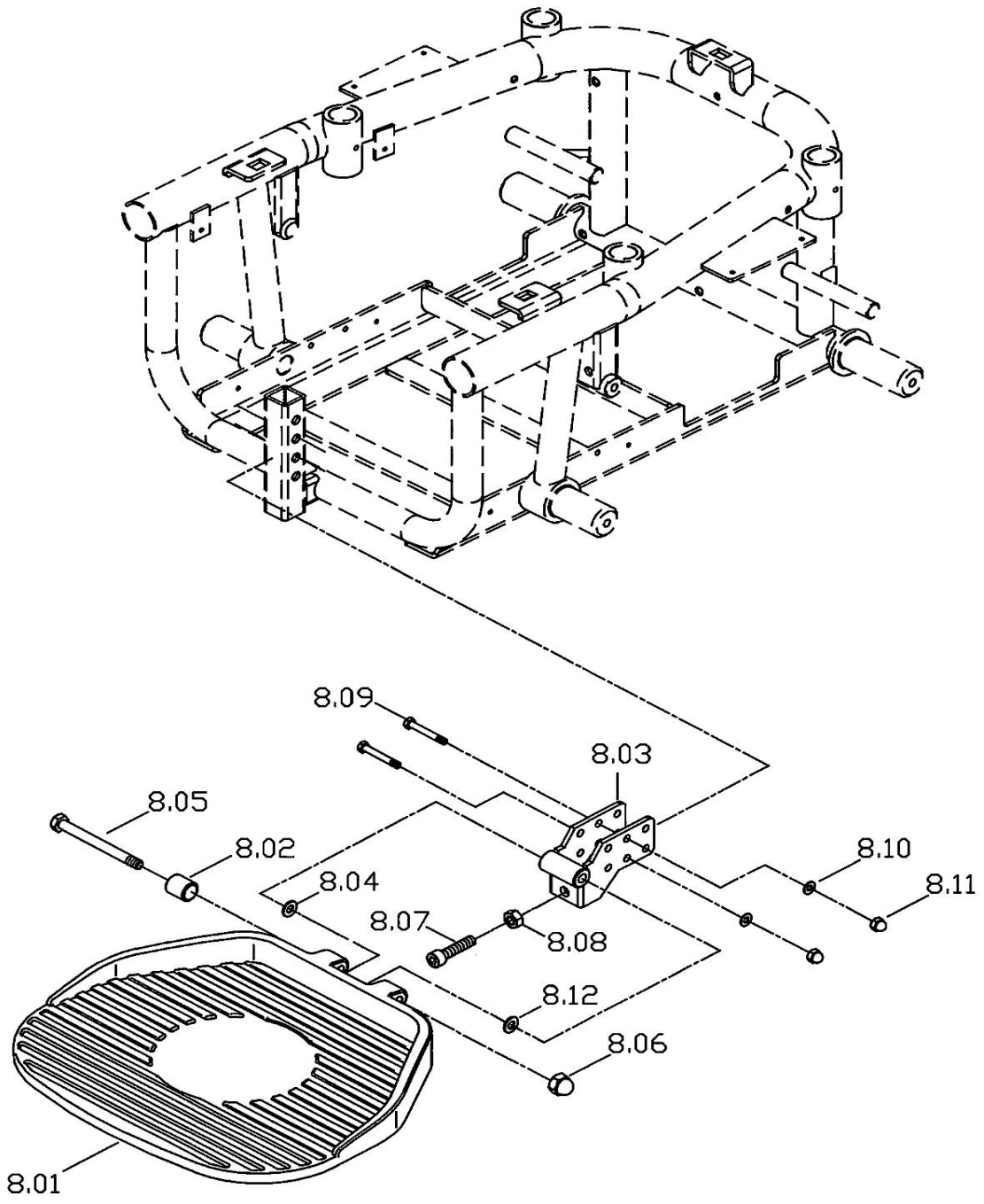


<b>Index No.</b>	<b>Part No.</b>	<b>Description</b>	<b>QTY</b>
6.31	65100003	CHARGER, HP1211B-4A-OFF BOARD	1

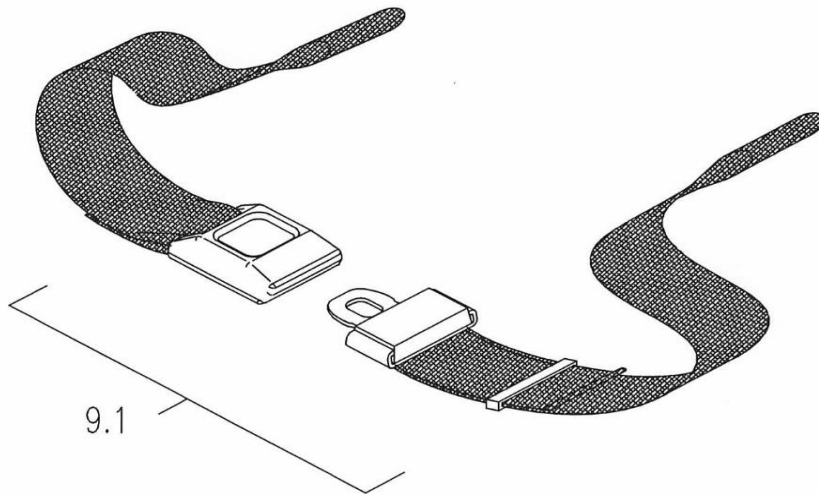


<b>Index No.</b>	<b>Part No.</b>	<b>Description</b>	<b>QTY</b>
7.1	33100817	CASTER FORK WHEEL ASS'Y.,6"*2" PU	4
7.01	33103040	CASTER FORK ONLY, P326	1
7.02	41300500	FORK STUD, M12*64L, BZ	1
7.03	53242007	NUT, NYLON, M12*P1.25*8H BK	1
7.04	33000135	6"*2" PU WHEEL, LS-W246, GRAY	1
7.05	53108029	WASHER, OD16*M8*1.5T, BZ	2
7.06	51208065	SCREW, BHSCS, M8*85L, BZ	1
7.07	53208005	NUT, NYLON W/CAP,M8*P1.25, BZ	1





Index No.	Part No.	Description	QTY
8.01	42500071	FOOTPLATE	1
8.02	24330019	SLEEVE, BRASS	1
8.03	33303088	FOOTPLATE BRACKET, P326	1
8.04	53108008	WASHER, $\phi 16 * \phi 8.2 * 1.0T, BZ$	1
8.05	51008014	HEX. HEAD BOLT, M8*90L	1
8.06	53208005	NUT, NYLON W/CAP, M8*P1.25, BZ	1
8.07	51108004	SCREW, M8*25L	1
8.08	53208008	NUT, M8*P1.25	1
8.09	51006016	SCREW, HHSC, M6*45L, BZ	2
8.10	53106011	WASHER, $\phi 13 * \phi 6.5 * 1.0T, BLACK ZINC$	2
8.11	53206005	NUT, NYLON, CAP, M6*P1.0, BZ	2
8.12	53108052	WASHER, NYLON, $\phi 16 * \phi 8 * 1.5T, BK$	1



<b>Index No.</b>	<b>Part No.</b>	<b>Description</b>	<b>QTY</b>
9.1	43700157	SAFETY BELT, 40" STD.	1