

GMP  
ISO9001  
ISO14001  
ISO13485  
CERTIFIED

**PIHSIANG**®

---

**SHOPRIDER**®

MODEL: **P424L**

*ELECTRIC POWER CHAIR*

*(PATENTED)*

***PIHSIANG MACHINERY MFG. CO., LTD.***

*NO.108, HSIN-HE ROAD, HSIN-FENG HSIANG 304  
HSINCHU COUNTY, TAIWAN*

MODEL : SO3-960058

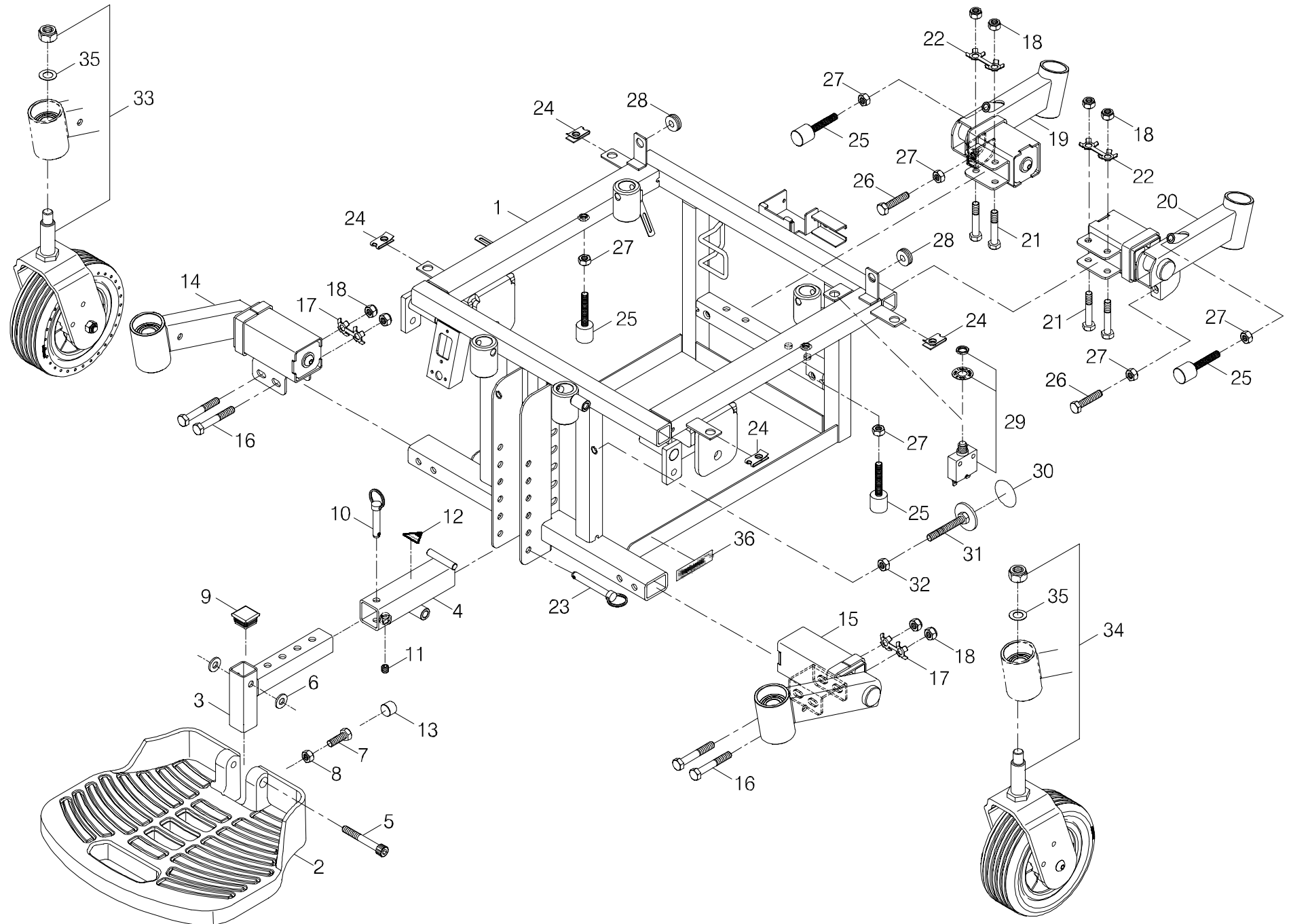
ITEM	PART NO.	DESCRIPTION	SPECIFICATION	REMARK
1	CA08-0P424L-211B	Invalid Power Chair, P424L	FULL AIR/INSRT 50Ah BATT 4A CHRGR	P424L(紅、藍、黑、香檳4色)/成品車/CA08氣胎50A 電瓶4A 充電機

<FRONT PAGE=  
P424L>

TABLE OF CONTENTS  
ILLUSTRATION

<NOTE FOR USE>

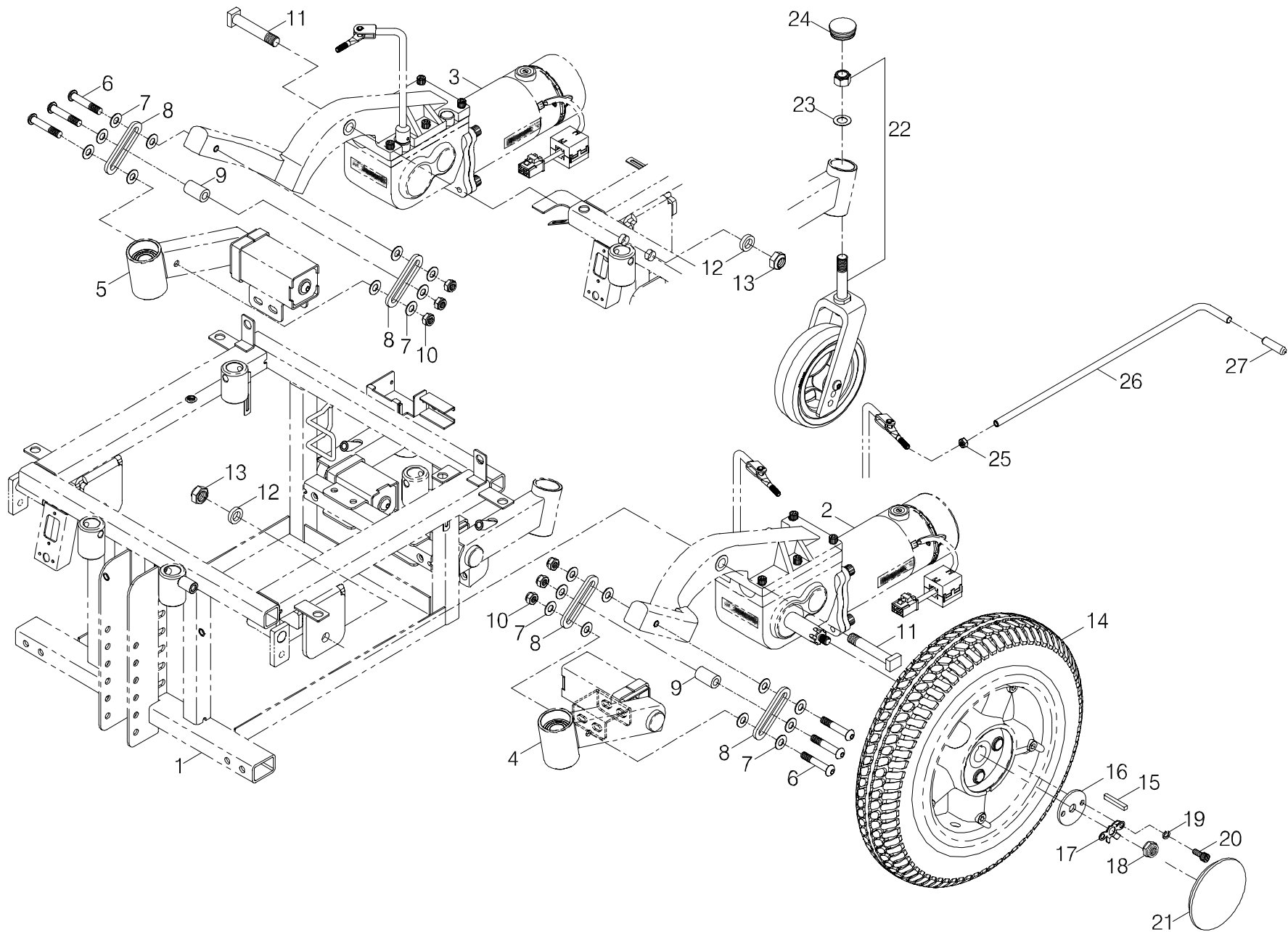
INDEX.1	FRAME ASSEMBLY ILLUSTRATION	車架總成	1-1~2
INDEX.2	FRAME ASSEMBLY ILLUSTRATION	車架總成	2-1~2
INDEX.3	FRAME ASSEMBLY ILLUSTRATION	車架總成	3-1
INDEX.4	DRIVE-TRAIN ASSEMBLY	馬達剎車減速箱總成	4-1~2
INDEX.5	DRIVE-TRAIN ASSEMBLY	馬達剎車減速箱總成	5-1~2
INDEX.6	MOTOR ASSEMBLY	馬達總成	6-1
INDEX.7	REAR WHEEL ASSEMBLY	後輪總成	7-1
INDEX.8	SEAT ASSEMBLY	座椅總成	8-1
INDEX.9	SEAT , ARM ASSEMBLY	座椅扶手總成	9-1
INDEX.10	CHASSIS COVER ASSEMBLY	蓋板總成	10-1
INDEX.11	SHROUD CANDY RED FULL	輪側蓋總成	11-1~2
INDEX.12	BATTERY KIT	電瓶總成	12-1
INDEX.13	CONTROL AND BATTERY WIRING ILLUSTRATION	控制及電瓶導線總成	13-1
	APPENDIX (1)	附錄 (1)	



INDEX.1

Index NO.	Part NO.	Qty.	Description	Specification	Remark
1	-----		Frame assembly illustration		車架總成
1-1	1321-00109-00-A3	1	Chassis	HOTSPOT-F(A3)	車架/G424L(A3)
			----- * -----		
1-2	2329-00100-10-B3	1	Footrest	Black Texture Coating,HOTSPOT-M/F(B3)	腳踏板(加肋厚及4螺孔)/黑綿綿漆,G424M/L(B3)
1-3	1329-00400-09	1	Adjustable Tubing for Footplate	G424M/L,888WAM/L	踏板伸縮管/G424M/L,888WAM/L
1-4	1329-00400-10	1	Sleeve for Footplate Ass'y	G424M/L,888WAM/L	伸縮連接架/G424M/L,888WAM/L
1-5	5002-08060-720	1	CAP HEAD ALLEN SCREW	M8*P1.25*60L,Black Galvanized	圓頭內六角鋼栓 12.9級/M8*P1.25*60L半牙(鍍黑鋅)
1-6	4001406-05	2	Flat Washer	A406-5, 8.5*18*2t	平墊圈/A406-5 ( 8.5*18*2t)G424M/L
1-7	5001-08025-710	1	Hex head screw	M8*P1.25*25L,Black Galvanized	外六角螺絲/M8*P1.25*25L(鍍黑鋅)G424M/L
1-8	5011-08013-700	1	Hex Nut	M8*P1.25*13,Black Galvanized	六角螺帽/M8*P1.25*13邊(鍍黑鋅)G424M/L
1-9	202303-88104	2	End Cap	Short,25*25	管塞/(短)25*25
1-10	202922-88100	1	Pin	7.8*40L,PP08040B	連接銷/ 7.8*40L (PP08040B)
1-11	5004-08008-311	1	Socket Screw	M8*1.25*8L	無頭螺絲(耐落)/M8*1.25*8L(G424M/L)
1-12	301123-11	1	Patent Warning Sticker	N23-11	三角型警告專利貼紙/N23-11/UL7
1-13	209929-77401	1	Rubber Cover	Black, 12*12L	膠套(黑)/ 12*12L(UL7-WR)
			----- * -----		
1-14	2345-00405-00	1	Elastomer Full	14",RF	扭力桿(右前)/14"F(G424L)含6003RS軸承
1-15	2345-00404-00	1	Elastomer Full	14",LF	扭力桿(左前)/14"F(G424L)含6003RS軸承
1-16	5001-08055-720	4	Hex Head Bolt	M8*P1.25*55L,Black Galvanized	外六角鋼栓 12.9級/M8*P1.25*55L 半牙(鍍黑鋅)G424
1-17	4001481-02	2	Locking tab washer	A481-2	螺絲防鬆片/A481-2(G424M/L扭力桿前)
1-18	5012-08013-700	8	Nyloc Nut	M8*P1.25*13,7.8t,Black Galvanized	尼龍螺帽/M8*P1.25*13邊7.8t(鍍黑鋅)
			----- * -----		
1-19	2345-00407-00	1	Elastomer Full	14",RR	扭力桿(右後)/14"R(G424L)含6001RS軸承
1-20	2345-00406-00	1	Elastomer Full	14",LR	扭力桿(左後)/14"R(G424L)含6001RS軸承

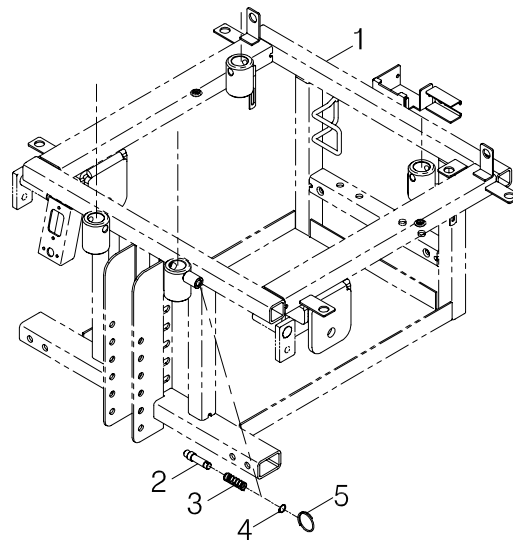
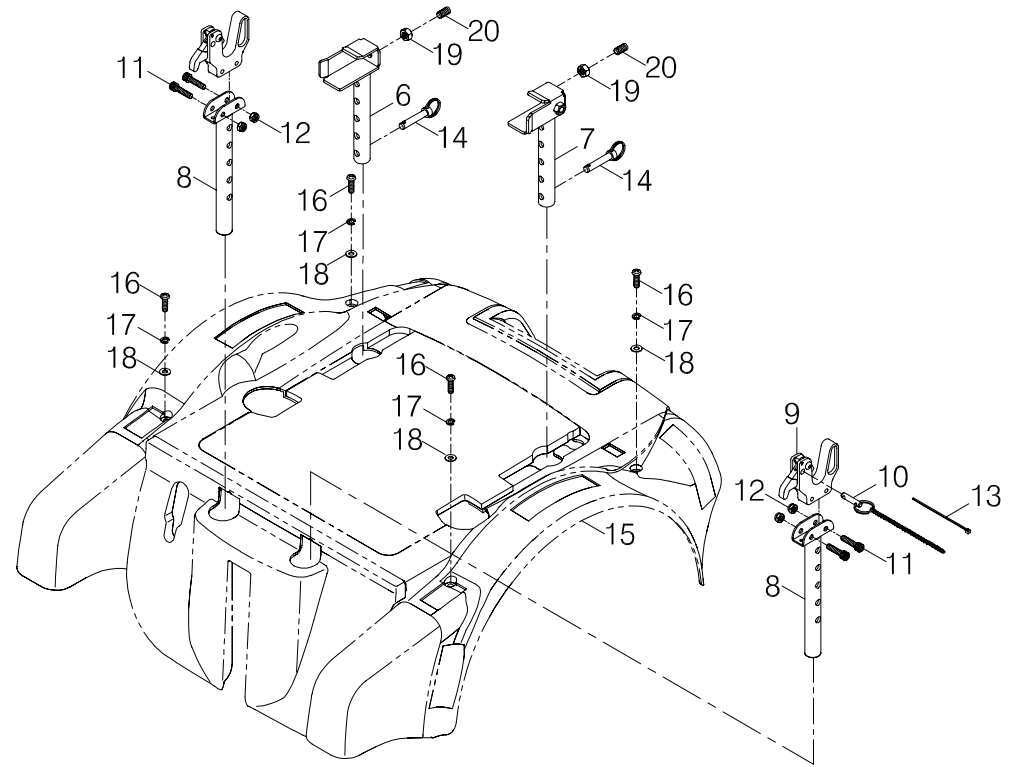
Index NO.	Part NO.	Qty.	Description	Specification	Remark
1-21	5001-08045-720	4	Hex Head Bolt	M8*P1.25*45L,Black Galvanized	外六角鋼栓8.8級/M8*P1.25*45L 半牙(鍍黑鋅)G424
1-22	4001481-03	2	Locking tab washer	A481-3	螺栓防鬆片/A481-3(G424M/L扭力桿後)
			-----*-----		
1-23	202922-00201	1	Connecting pin	8.0*60L	連接銷/ 8.0*60L (G424M/L)
1-24	202921-88100	4	U type plate nut	Close	螺絲固定片/(閉口)
1-25	202904-00101	4	Set,Screw	20L,Black galvanized,Rubber	定位螺栓 橡膠頭 G424M/L/頭 20*20L 牙長45mm
1-26	5001-08040-710	2	Hex Head Screw	M8*P1.25*40L, Black Galvanized	外六角螺栓/M8*P1.25*40L (鍍黑鋅)
1-27	5011-08013-700	6	Hex Nut	M8*P1.25*13,Black Galvanized	六角螺帽/M8*P1.25*13邊(鍍黑鋅)G424M/L
1-28	209937-00100	2	Rubber ring	9.5/ 12/ 20/8T,HOTSPOT-M/F	橡膠環/ 9.5/ 12/ 20/8T(G424M/L)
1-29	206207-88102	1	Circuit Breaker	50A	安全開關/50A(含平墊、螺帽)
1-30	2399-00300-00	2	Velcro	35,Hook	自黏扣帶(勾面)/ 35
1-31	2329-00200-01C	2	Set Screw	M8*P1.25*35L, Multicolor Gavalnized	定位螺栓/M8*P1.25*35L (五彩)
1-32	5011-08013-200	2	Hex Nut	M8*P1.25*13,Multicolored Galvanized	六角螺帽/M8*P1.25*13邊 (五彩)
			-----*-----		
1-33	1351-00602-00-A3	1	Caster assembly	149*50,Right(A3),HOTSPOT-M/F	(瞬間膠合)前活動輪總成(右)委外/149*50 G424M/L(黑色塑膠輪圈)A3
1-34	1351-00601-00-A3	1	Caster assembly	149*50,Left(A3),HOTSPOT-M/F	(瞬間膠合)前活動輪總成(左)委外/149*50 G424M/L(黑色塑膠輪圈)A3
1-35	5021-12021-210	2	Flat Washer	12*21*0.5t,Multicolored Galvanized	平墊圈/ 12*21*0.5t (五彩)
1-36	-----	REF(2)	Decal		條碼貼紙



Index NO.	Part NO.	Qty.	Description	Specification	Remark
2	-----		Frame assembly illustration		車架總成
2-1	-----	REF(1)	Chassis		車架
			----- * -----		
2-2	-----	REF(1)	Motor/Gearbox/Brake Left Full		馬達剎車減速箱總成
2-3	-----	REF(1)	Motor/Gearbox/Brake Right Full		馬達剎車減速箱總成
			----- * -----		
2-4	-----	REF(1)	Elastomer Full		扭力桿(左前)
2-5	-----	REF(1)	Elastomer Full		扭力桿(右前)
2-6	5003-08045-720	6	ALLEN BUTTON HEAD SCREW	M8*P1.25*45L,15L,Black Galvanized	半圓頭內六角鋼栓G424M/L/M8*P1.25*45L牙長15L (鍍黑鋅)
2-7	4001406-04	20	Flat Washer	A406-4, 8.5*18*1t	平墊圈/A406-4 ( 8.5*18*1t)G424M/L
2-8	4001288-03	4	Plate	A288-3	環片/A288-3(G424M/L)
2-9	209929-00101	2	Polyurethane roller	8.5* 16*27L,HOTSPOT-M/F	膠管/ 8.5* 16*27L(G424M/L)
2-10	5012-08013-701	6	Nyloc Nut	M8*P1.25*13 6t,Black Galvanized	尼龍螺帽/M8*P1.25*13邊6t (鍍黑鋅)
			----- * -----		
2-11	4003048-05	2	Front fork shaft	C48-5,M12*P1.25*68L,Multicolor	前叉軸/C48-5 (M12*P1.25*68L)五彩
2-12	4005006-00	2	Spacer	H6, 12ID* 20OD*4.5T	間隔圈/H6( 12 ID* 20 OD*4.5T)
2-13	5014-12019-210	2	Self-lock nut	M12*P1.25*19,Multicolored Galvanized	防鬆螺帽/M12*P1.25*19邊 (五彩)
			----- * -----		
2-14	-----	REF(2)	Rear wheel assembly		後輪總成
2-15	505301-00505-02	2	Drive Key	5*5*35	單頭圓鍵/5*5*35
2-16	4001364-03	2	Flat Washer	A364-3, 10.5*45*3t	平墊圈/A364-3 ( 10.5*45*3t)/PHFW
2-17	4001481-01	2	Locking tab washer	A481-1	螺栓防鬆片/A481-1(G424M/L輪胎)
2-18	-----	REF(2)	Nylon lock nut		尼龍螺帽
2-19	5022-06010-210	4	Spring Washer	6*10, Multicolored Galvanized	彈簧墊圈/ 6*10 (五彩)

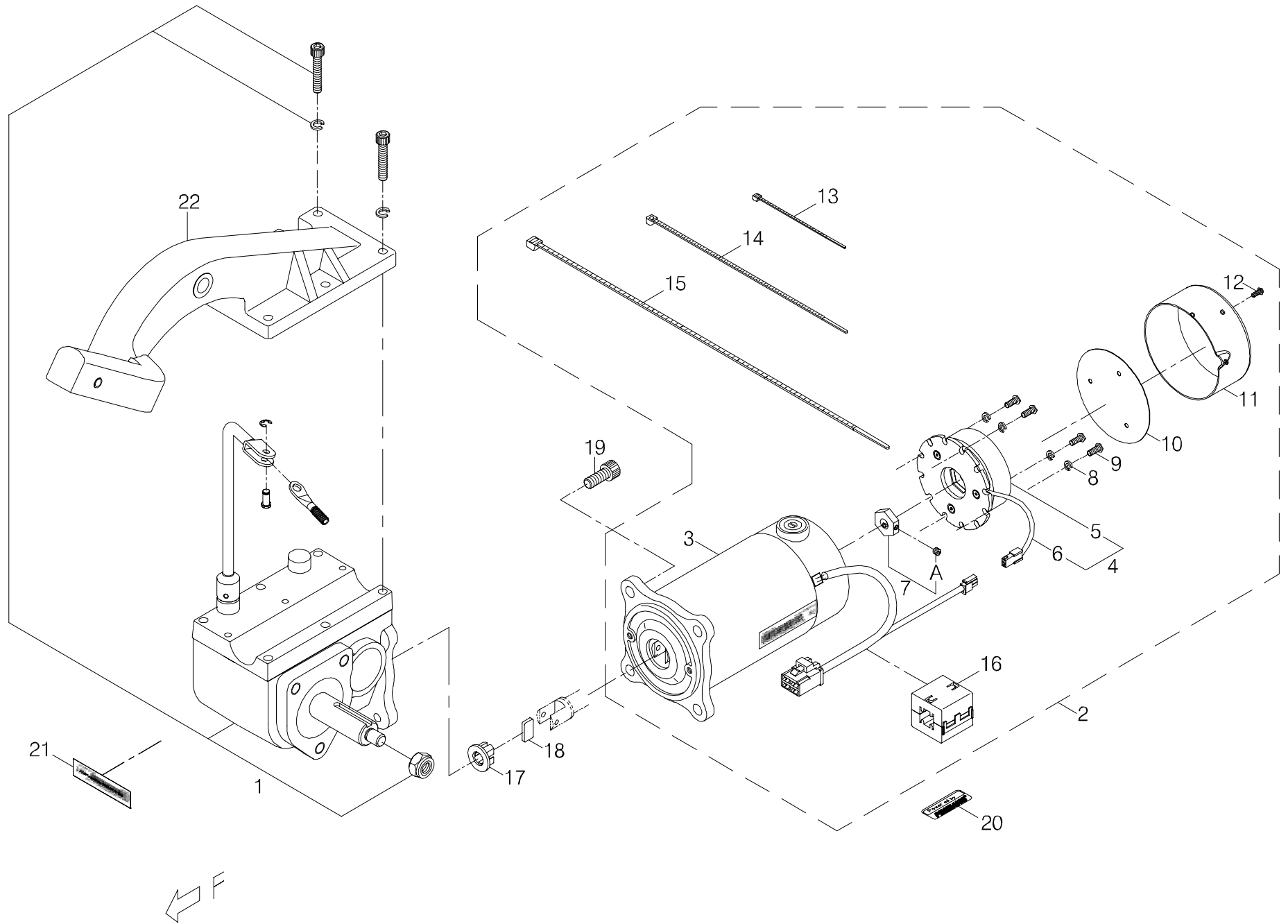


Index NO.	Part NO.	Qty.	Description	Specification	Remark
2-20	5002-06016-440	4	CAP HEAD ALLEN SCREW,NYLOC	M6*P1.0*16L,SUS	圓頭內六角鋼栓/M6*P1.0*16L SUS 耐落
2-21	203512-00100-A2	2	Rim Cover	HOTSPOT-F,A2	輪圈蓋(加溝槽)/G424L(A2)
			----- * -----		
2-22	1351-00502-00	2	Caster assembly	5",HOTSPOT-M/F	後活動輪總成5"/G424M/L(鎖上孔)委外5"胎
2-23	5021-12021-210	2	Flat Washer	12*21*0.5t,Multicolored Galvanized	平墊圈/ 12*21*0.5t (五彩)
2-24	209931-77303	2	End Cap	UL7-W/WD,For caster	管塞/UL7-W/WD(活動輪架)
			----- * -----		
2-25	5011-06010-700	2	Hex Nut	M6*P1.0*10*5L,Black Galvanized	六角螺帽/M6*P1.0*10邊*5L (鍍黑鋅)G424
2-26	200902-00100	2	Free wheel handle	HOTSPOT-M/F(350L)	離合器拉柄/G424M/L(350L)
2-27	209929-88101	2	Vinyl cover	Burgundy, 6.8*35L	膠套(紅)/ 6.8*35L



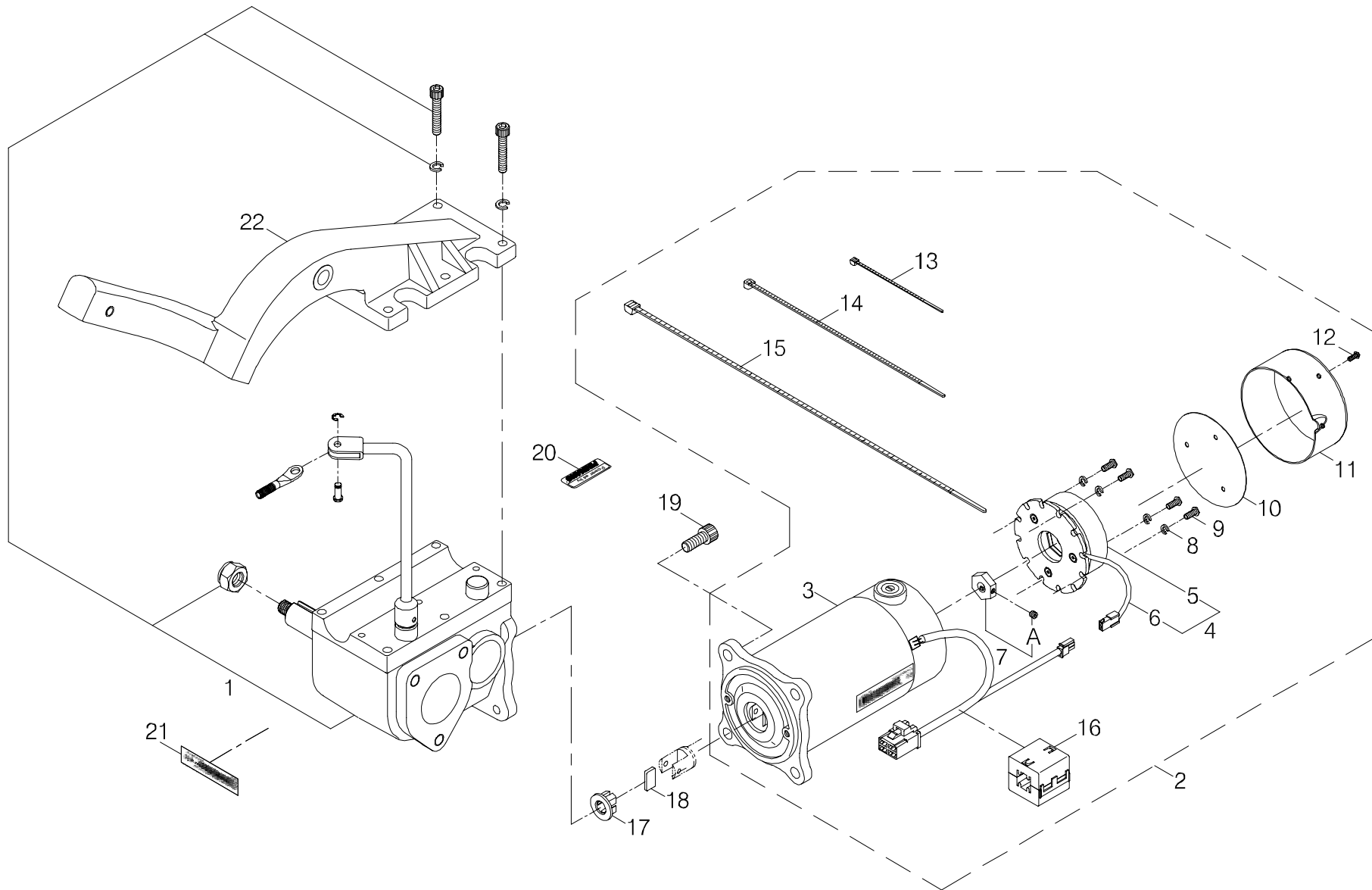
INDEX.3

Index NO.	Part NO.	Qty.	Description	Specification	Remark
3	-----		Frame assembly illustration		車架總成
3-1	-----	REF(1)	Chassis		車架
			----- * -----		
3-2	4003291-02	1	Pin	C291-2	固定銷/C291-2/G424M/L
3-3	202929-00100	1	SPRING FOR LOCKING PIN	0.8*10*30L	壓簧G424M/L/ 0.8*10*30L(C291-2固定銷用)
3-4	505401-00800-00	1	Snap ring	STW-8,Black	C型扣環 S型/STW-8 (染黑)G424M/L
3-5	204512-66700	1	Ring	1.5* 25.4	拉環/1.5* 25.4
			----- * -----		
3-6	1340-00302-00-A3	1	Strut	HOTSPOT-M/F,RR	支撐柱/右後(G424M/L)(A3)
3-7	1340-00301-00-A3	1	Strut	HOTSPOT-M/F,RL	支撐柱/左後(G424M/L)(A3)
3-8	1340-00303-00-A2	2	Strut	HOTSPOT-M/F,F	支撐柱/前(G424M/L)(A2)
3-9	202913-00101	2	Bracket	HOTSPOT-M/F	座椅鎖扣/G424M/L(加孔)
3-10	202922-00200	1	Connecting pin	6.3*30L,ID 12	連接銷(含鍊條)G424M/L/ 6.3*30L(環ID 12鏈條80L)
3-11	5002-06025-720	4	CAP HEAD ALLEN SCREW	M6*P1.0*25L,Black Galvanized	圓頭內六角鋼栓 12.9級/M6*P1.0*25L (鍍黑鋅)G424M/L
3-12	5012-06010-701	4	Nyloc Nut	M6*P1.0*10*6t,Black Galvanized	尼龍螺帽/M6*P1.0*10邊*6t (鍍黑鋅)
3-13	505201-00940-50	1	cable Tie	CV-094B	束帶/CV-094B
3-14	202922-88100	2	Pin	7.8*40L,PP08040B	連接銷/ 7.8*40L (PP08040B)
			----- * -----		
3-15	-----		Chassis cover assembly		蓋板總成
3-16	5005-06020-440	4	Screw	M6*P1.0*20L,SUS	十字圓頭螺絲/M6*P1.0*20L SUS
3-17	5022-06010-210	4	Spring Washer	6*10, Multicolored Galvanized	彈簧墊圈/ 6*10 (五彩)
3-18	5021-06013-711	4	Flat Washer	6.5*13*1t,Black Galvanized	平墊圈/ 6.5*13*1t(鍍黑鋅)
3-19	5011-08013-700	2	Hex Nut	M8*P1.25*13,Black Galvanized	六角螺帽/M8*P1.25*13邊 (鍍黑鋅)G424M/L
3-20	5004-08020-310	2	Set Screw	M8*P1.25*20L	無頭螺絲/M8*P1.25*20L



Index NO.	Part NO.	Qty.	Description	Specification	Remark
4	1300-00602-00	1	Motor/Gearbox/Brake Left Full	G424L	馬達剎車減速箱總成/左-9MNS-2A+(#9)G424L+磁粉蕊
4-1	1304-00402-01-A2	1	Worm Gearbox, Left	#8-1(C)/21:1, Black, YRS-15,40Cr,A2	蝸輪減速箱(左)(G424M/L)(C)/#8-1/21:1(黑色)YRS-15(40Cr)A2
4-2	1301-00107-00-A3	1	Motor and Brake Assembly	9MNS-2A, #9, w/ Ferrite	馬達剎車總成/9MNS-2A+(#9)+磁粉蕊
4-3	1302-00201-02	1	Motor Assembly	9MNS-2A, G424L	馬達(總成)/9MNS-2A(G424L)
4-4	100303-00100-A3	1	Electromagnetic brake assembly	#9(A3),GM-424-C	電磁剎車加工總成#9/#9(A3)焊GM-424-C
4-5	100302-88102-A4	1	Electromagnetic Brake Assembly	#9, WR198A213P1, A4	電磁剎車總成#9/WR198A213P1(A4)
4-6	2370-01000-00	1	Charging cable	GM-424-C	剎車線/GM-424-C
-----	9004-001	REF(1)	Heat shrink sleeve	F3,3*0.25	熱縮套管(不含膠)/F3(3*0.25)
-----	9004-013	REF(1)	Heat shrink sleeve	F34-10, 10*0.15T	熱縮套管(不含膠)/F34-10, 10*0.15T
4-7	200302-88101	1	Driving Hex Axle for Brake Disc	#2-1,787N	剎車六角軸套/#2-1 (787N)
4-A	-----	REF(2)	Nylok socket screw		耐落無頭螺栓
4-8	5022-04007-210	4	Spring Washer	4*7*1.25t, Multicolored Galvanized	彈簧墊圈/ 4*7*1.25t (五彩)
4-9	5005-04010-210	4	Philip Screw	M4*P0.7*10L, Multicolor Galvanized	十字圓頭螺栓/M4*P0.7*10L (五彩)
4-10	209908-00100	1	Heat sink	HOTSPOT-M,ET1B	散熱片/G424M/L,ET1B
-----	9004-011	REF	Radiating grease		散熱膏
4-11	4001458-02	1	EM brake cover	A458-2	電磁剎車蓋/A458-2(G424M/L,ET1B)
4-12	5005-03008-710	3	Screw	M3*P0.5*8L,Black Galvanized	十字圓頭螺栓/M3*P0.5*8L(鍍黑鋅)G424M/L,ET1B
4-13	505201-00940-50	1	cable Tie	CV-094B	束帶/ CV-094B
4-14	505201-02000-50	1	Cable Tie	CV-200B	束帶/ CV-200B
4-15	505201-03680-00	2	cable Tie	CV-368B	束帶/ CV-368B(G424M/ET1B)
4-16	206216-88100	1	Magnetic core	EM01	磁粉蕊/EM01
4-17	200904-88100	1	Joint Adapter		變速箱連接襯套
4-18	200905-88100	1	Plate for Joint Adapter		變速箱連接片
4-19	5002-08020-220	4	CAP HEAD ALLEN SCREW	M8*P1.25*20L,Multicolored Galvanized	圓頭內六角鋼栓 12.9級/M8*P1.25*20L (五彩)

Index NO.	Part NO.	Qty.	Description	Specification	Remark
4-20	301179-04	1	Trademark Sticker	N79-4	指示貼紙(40*15.5)/N79-4(Powered by PIHSIANG)
4-21	-----	REF(1)	Decal		條碼貼紙
4-22	1329-00902-00	1	Gearbox mount left full	HOTSPOT-F	減速箱固定架(左)/G424L

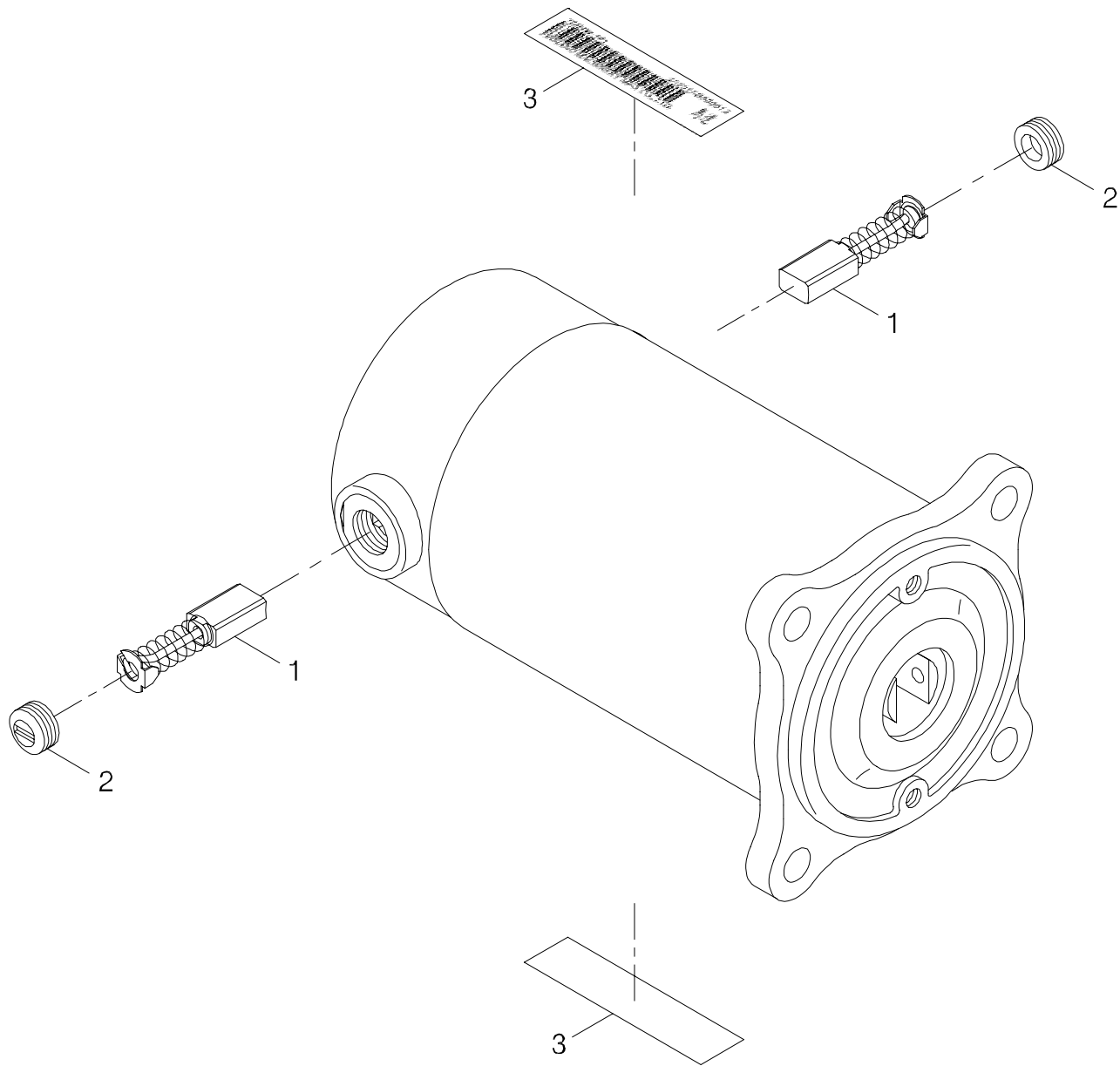


← F

Index NO.	Part NO.	Qty.	Description	Specification	Remark
5	1300-00603-00	1	Motor/Gearbox/Brake Right Full	HOTSPOT-F	馬達剎車減速箱總成/右-9MNS-2A+ (#9)G424L+磁粉蕊
5-1	1304-00403-01-A2	1	Worm Gearbox, Right	#8-1(C)/21:1, Black, YRS-15,40Cr A2	蝸輪減速箱(右)(G424M/L)(C)/#8-1/21:1(黑色)YRS-15(40Cr)A2
5-2	1301-00107-00-A3	1	Motor and Brake Assembly	9MNS-2A, #9, w/ Ferrite	馬達剎車總成/9MNS-2A+ (#9)+磁粉蕊
5-3	1302-00201-02	1	Motor Assembly	9MNS-2A, G424L	馬達(總成)/9MNS-2A(G424L)
5-4	100303-00100-A3	1	Electromagnetic brake assembly	#9(A3),GM-424-C	電磁剎車加工總成#9/#9(A3)焊GM-424-C
5-5	100302-88102-A4	1	Electromagnetic Brake Assembly	#9, WR198A213P1, A4	電磁剎車總成#9/WR198A213P1(A4)
5-6	2370-01000-00	1	Charging cable	GM-424-C	剎車線/GM-424-C
-----	9004-001	REF(1)	Heat shrink sleeve	F3,3*0.25	熱縮套管(不含膠)/F3(3*0.25)
-----	9004-013	REF(1)	Heat shrink sleeve	F34-10, 10*0.15T	熱縮套管(不含膠)/F34-10, 10*0.15T
5-7	200302-88101	1	Driving Hex Axle for Brake Disc	#2-1,787N	剎車六角軸套/#2-1 (787N)
5-A	-----	REF(2)	Nylok socket screw		耐落無頭螺栓
5-8	5022-04007-210	4	Spring Washer	4*7*1.25t, Multicolored Galvanized	彈簧墊圈/ 4*7*1.25t (五彩)
5-9	5005-04010-210	4	Philip Screw	M4*P0.7*10L, Multicolor Galvanized	十字圓頭螺栓/M4*P0.7*10L (五彩)
5-10	209908-00100	1	Heat sink	HOTSPOT-M,ET1B	散熱片/G424M/L,ET1B
-----	9004-011	REF	Radiating grease		散熱膏
5-11	4001458-02	1	EM brake cover	A458-2	電磁剎車蓋/A458-2(G424M/L,ET1B)
5-12	5005-03008-710	3	Screw	M3*P0.5*8L,Black Galvanized	十字圓頭螺栓/M3*P0.5*8L(鍍黑鋅)G424M/L,ET1B
5-13	505201-00940-50	1	cable Tie	CV-094B	束帶/CV-094B
5-14	505201-02000-50	1	Cable Tie	CV-200B	束帶/CV-200B
5-15	505201-03680-00	2	cable Tie	CV-368B	束帶/CV-368B(G424M/ET1B)
5-16	206216-88100	1	Magnetic core	EM01	磁粉蕊/EM01
5-17	200904-88100	1	Joint Adapter		變速箱連接襯套
5-18	200905-88100	1	Plate for Joint Adapter		變速箱連接片
5-19	5002-08020-220	4	CAP HEAD ALLEN SCREW	M8*P1.25*20L,Multicolored Galvanized	圓頭內六角鋼栓 12.9級/M8*P1.25*20L (五彩)

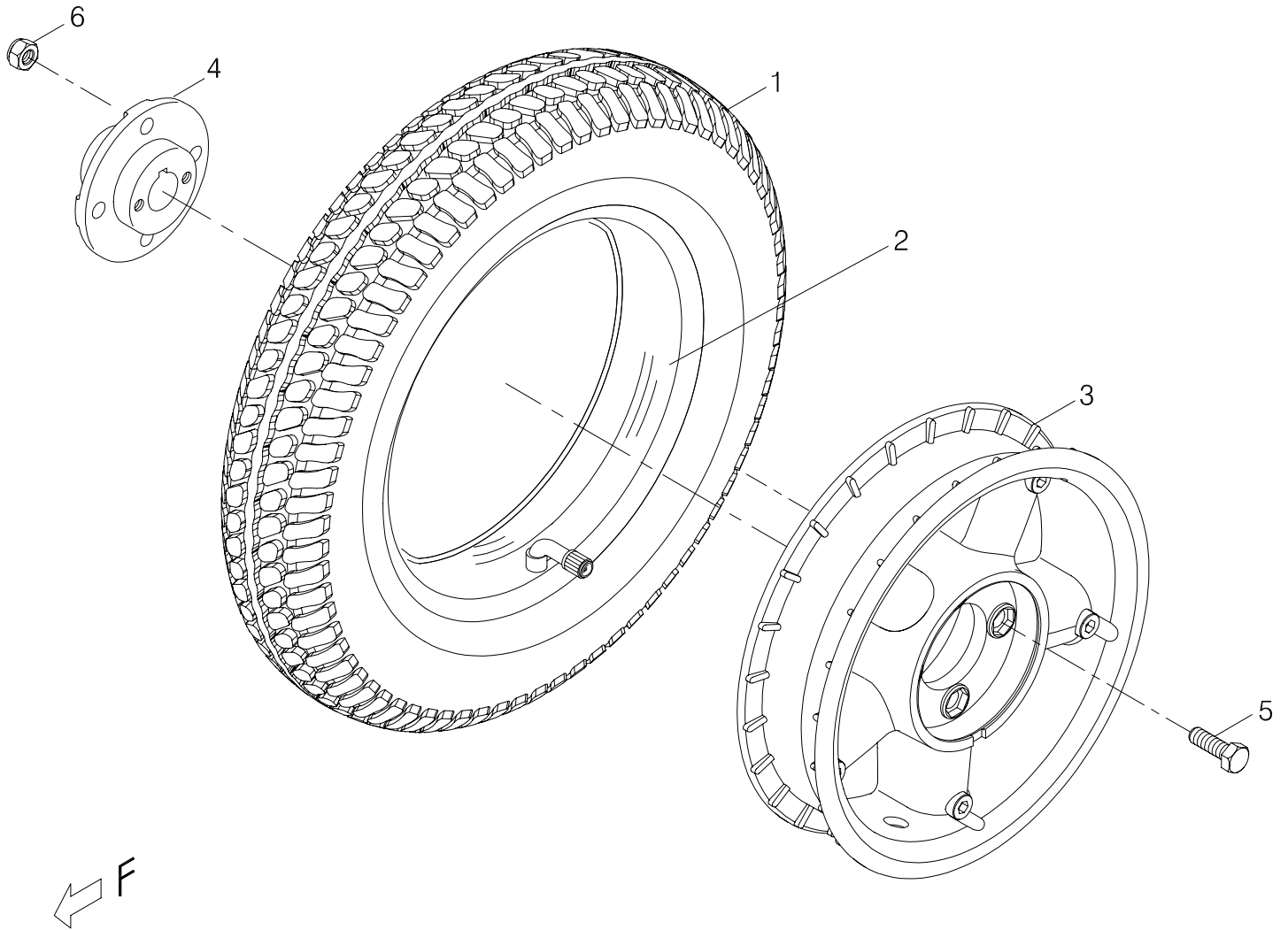


Index NO.	Part NO.	Qty.	Description	Specification	Remark
5-20	301179-04	1	Trademark Sticker	N79-4	指示貼紙(40*15.5)/N79-4(Powered by PIHSIANG)
5-21	-----	REF(1)	Decal		條碼貼紙
5-22	1329-00903-00	1	Gearbox mount right full	HOTSPOT-F	減速箱固定架(右)/G424L

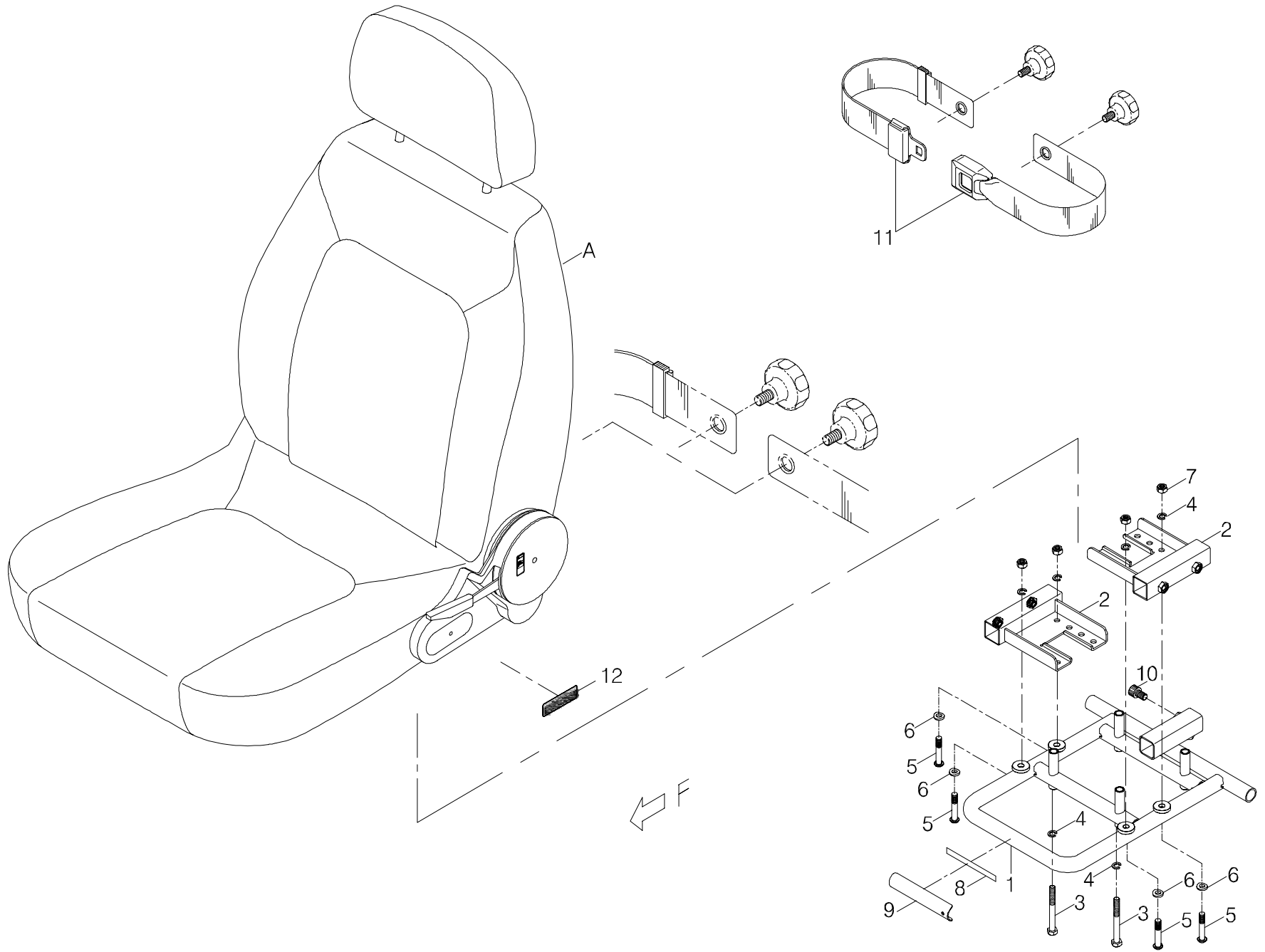


INDEX.6

Index NO.	Part NO.	Qty.	Description	Specification	Remark
6	1302-00201-02		Motor Assembly	9MNS-2A, G424L	馬達(總成)/9MNS-2A(G424L)
6-1	-----	REF(2)	CARBON BRUSH		碳刷
6-2	-----	REF(2)	Carbon brush cover		碳刷蓋
6-3	-----	REF(2)	Decal		條碼貼紙

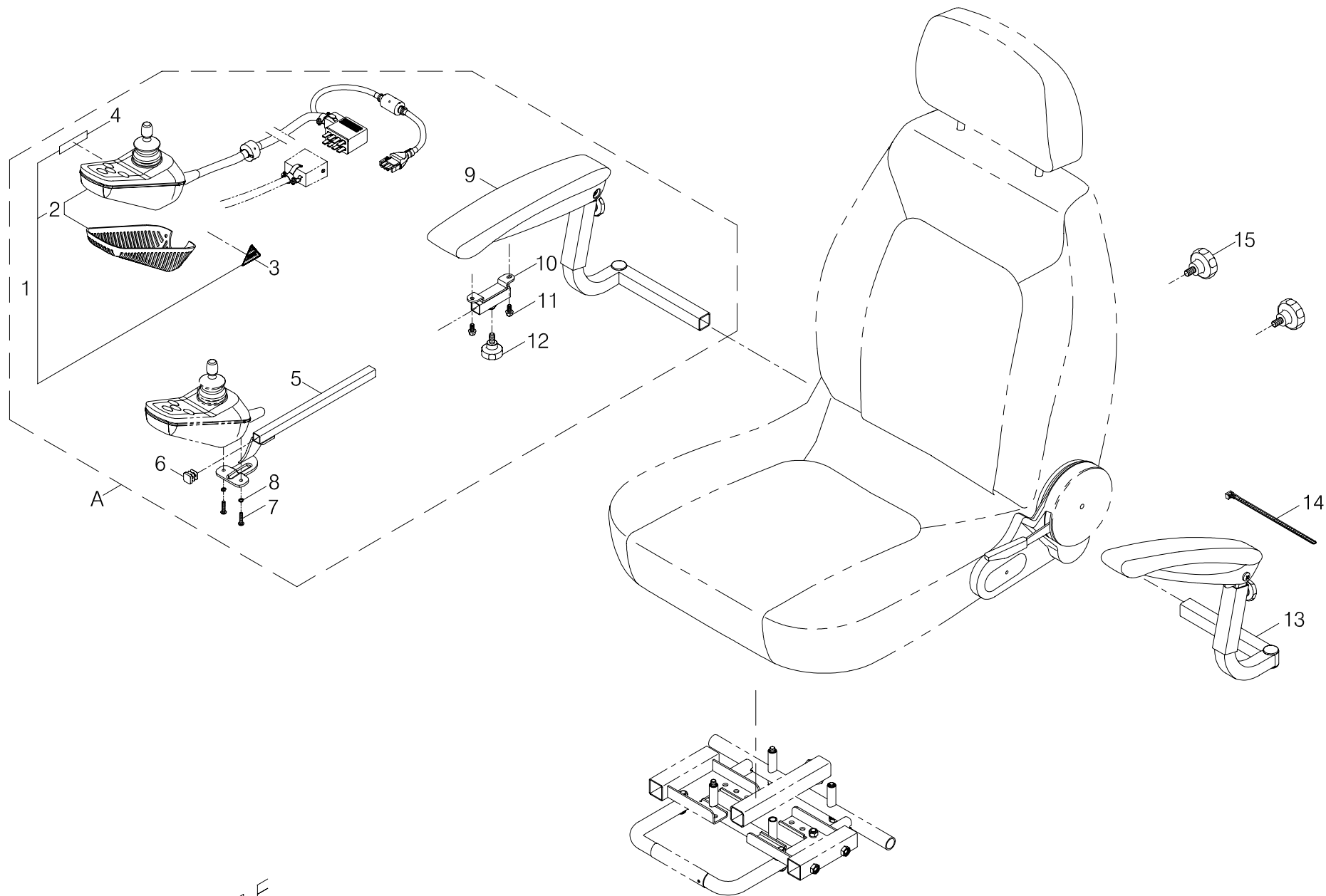


Index NO.	Part NO.	Qty.	Description	Specification	Remark
7	105201-00802-50	2	Rear Wheel Assembly	G424L,Pneumatic Gray Tire,Black Rim	後輪總成 /灰胎/G424L 黑色鋁圈/充氣(IA)
7-1	205201-00800	1	Gray Tire	3.00-8 IA2889	灰胎/3.00-8(14"胎)IA2889(顆粒) MGR
7-2	205102-67601	1	Inner Tube	3.00-8,TR-87	內胎(14"胎)/3.00-8 TR-87(IA)(含風嘴蓋)
7-3	205110-00100-50	1	Rim	8",Black	內外鋁輪圈(含鍍黑鋅鋼栓)/8"五爪型 黑(G424L)
7-4	205203-66400-A2	1	Hub	X-3-XL, 20, Black, A2	驅動軸套/X-3-XL ( 20) 黑(A2)
7-5	5001-08025-440	4	Hex Head Bolt	M8*P1.25*25L,SUS304	外六角鋼栓/M8*P1.25*25L SUS304
7-6	5012-08013-200	4	Nyloc Nut	M8*P1.25*13 7.8t,Multicolored Galvanized	尼龍螺帽/M8*P1.25*13邊7.8t(五彩)



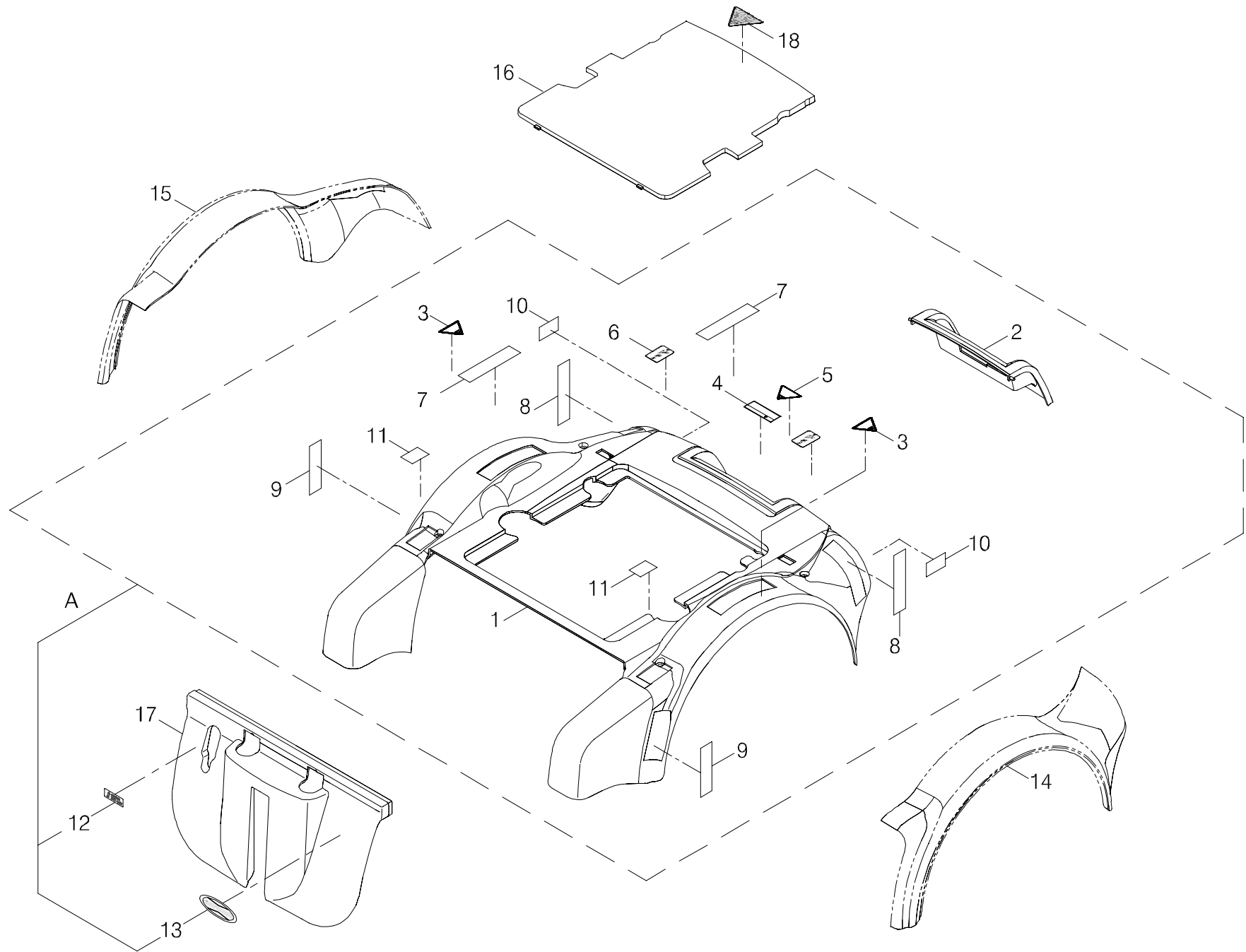
INDEX.8

Index NO.	Part NO.	Qty.	Description	Specification	Remark
8	-----	1	Seat assembly		座椅總成
8-A	104021-00108	1	Black Vinyl Captain Seat,High Backrest	18.5"x17.5",w/Reclining 112,Headrest	高背皮椅6段112度後傾DL頭枕/黑色(包覆)(18.5*17.5)(薄座)
8-1	204501-00101	1	Seat frame	HOTSPOT-F	椅架/G424L
8-2	202936-00100	2	Legrest Hanger Adapter	HOTSPOT-M/F	腳架固定座/G424M/L
8-3	5001-08075-720	4	Hex Head Bolt	M8*P1.25*75L,Black Galvanized	外六角鋼栓/M8*P1.25*75L半牙(鍍黑鋅)12.9級
8-4	5022-08013-710	8	SPRING WASHER	8*13,Black Galvanized	彈簧墊圈/ 8*13 (鍍黑鋅)
8-5	5003-08045-720	4	ALLEN BUTTON HEAD SCREW	M8*P1.25*45L,15L,Black Galvanized	半圓頭內六角鋼栓G424M/L/M8*P1.25*45L牙長15L (鍍黑鋅)
8-6	4001428-03	4	Flat Washer	A428, 8.2*15.5*3t,Black Galvanized	平墊圈/A428-3( 8.2*15.5*3t)電著黑
8-7	5012-08013-700	4	Nyloc Nut	M8*P1.25*13,7.8t,Black Galvanized	尼龍螺帽/M8*P1.25*13邊7.8t(鍍黑鋅)
8-8	203108-80500	1	Acrylic foam tape	10mm*33ML #4211	3M雙面膠/10mm*33ML #4211
8-9	4001598-00	1	Bracket for seat frame	A598	椅架固定片/A598(G424M/L)
8-10	5002-10016-720	1	CAP HEAD ALLEN SCREW	M10*P1.25*16L,Black Galvanized	圓頭內六角鋼栓(耐落)12.9級/M10*P1.25*16L (鍍黑鋅)
8-11	300909-03-B1	1	Seat belt(66")	#5(66"),Positioning strap	安全帶/#5(66")
8-12	301174-31	1	Caution Sticker	N74-31	警告貼紙/N74-31

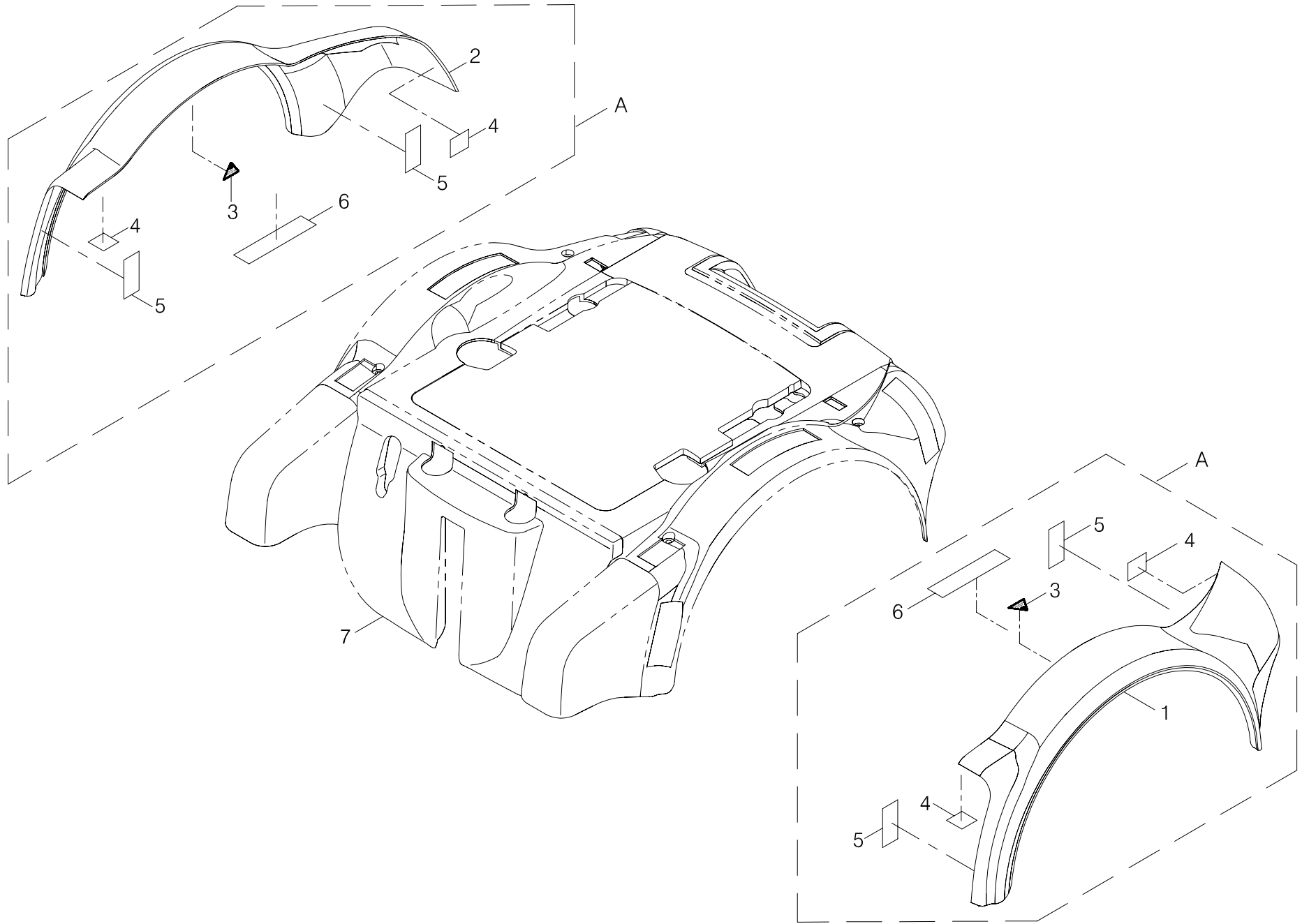




Index NO.	Part NO.	Qty.	Description	Specification	Remark
9	-----		Seat armrest assembly		座椅扶手總成
9-A	1361-00408-00-B1	1	Generic controller assembly	VSI 50/70 D50502	搖桿控制器+扶手總成/VSI 50/70 D50502(G424M/L)B1
9-1	1361-00208-00-A2	1	Generic controller assembly	VSI 50/70 D50502	搖桿控制器總成/VSI 50/70 D50502
9-2	1361-00108-00-A3	1	Joystick Controller	VSI 50/70,D50502-02,w/ Protective Net,A3	搖桿控制器/VSI 50/70 D50502-02+護網(A3)
9-3	301123-21-A2	1	Warning Sticker	N23-21-A2	三角型警告貼紙/N23-21-A2(小)
9-4	-----	REF(1)	Decal		條碼貼紙
9-5	1343-00700-00	1	CONTROLLER MOUNT	HOTSPOT-M/F	扶手控制架/G424M/L,(265mm)
9-6	209931-00102	1	Square Plug	15mm	方形管塞/ 15mm
9-7	5005-05020-710	2	Screw	M5*P0.8*20L,Black Galvanized	十字圓頭鋼栓/M5*P0.8*20L (鍍黑鋅)
9-8	5022-05008-710	2	Spring washer	5*8,Black Galvanized	彈簧墊圈/ 5*8 (鍍黑鋅)
9-9	104400-00100-B1-3	1	Flipback high adjustable armrest right	14", Right, Economic,79mm, B1-3	扶手總成(右)經濟,彎弧直角耐燃/四段可調高低14",79mm寬,B1-3
9-10	1343-00701-00	1	Control mount receiver	HOTSPOT-M/F	扶手支撐架/G424M/L
9-11	5007-06012-710	2	Hex head Philips Screw w/ Washer	M6*P1.0*12L,Black Galvanized	外六角帶墊圈螺栓(十字)/M6*P1.0*12L(鍍黑鋅)
9-12	5008-08020-210-A2	1	Tighten Knob	M8*P1.25*17L,Multicolored Galvanized,A2	星型螺栓/L07/M8*P1.25*17L全牙,五彩(A2)
			----- * -----		
9-13	104300-00100-B1-3	1	Flipback Height Adjustable Armrest	14", Left, Standard, 79mm, B1-3	扶手總成(左)經濟,彎弧直角耐燃/四段可調高低14",79mm寬,B1-3
9-14	505202-02000-50	2	Releasable Zip Tie	HV-200	活束帶/HV-200
9-15	5008-10020-212-A2	2	Tighten Knob	M10*17L,Multicolored Galvanized,A2	星型螺栓/M10*17L全牙,五彩(A2)

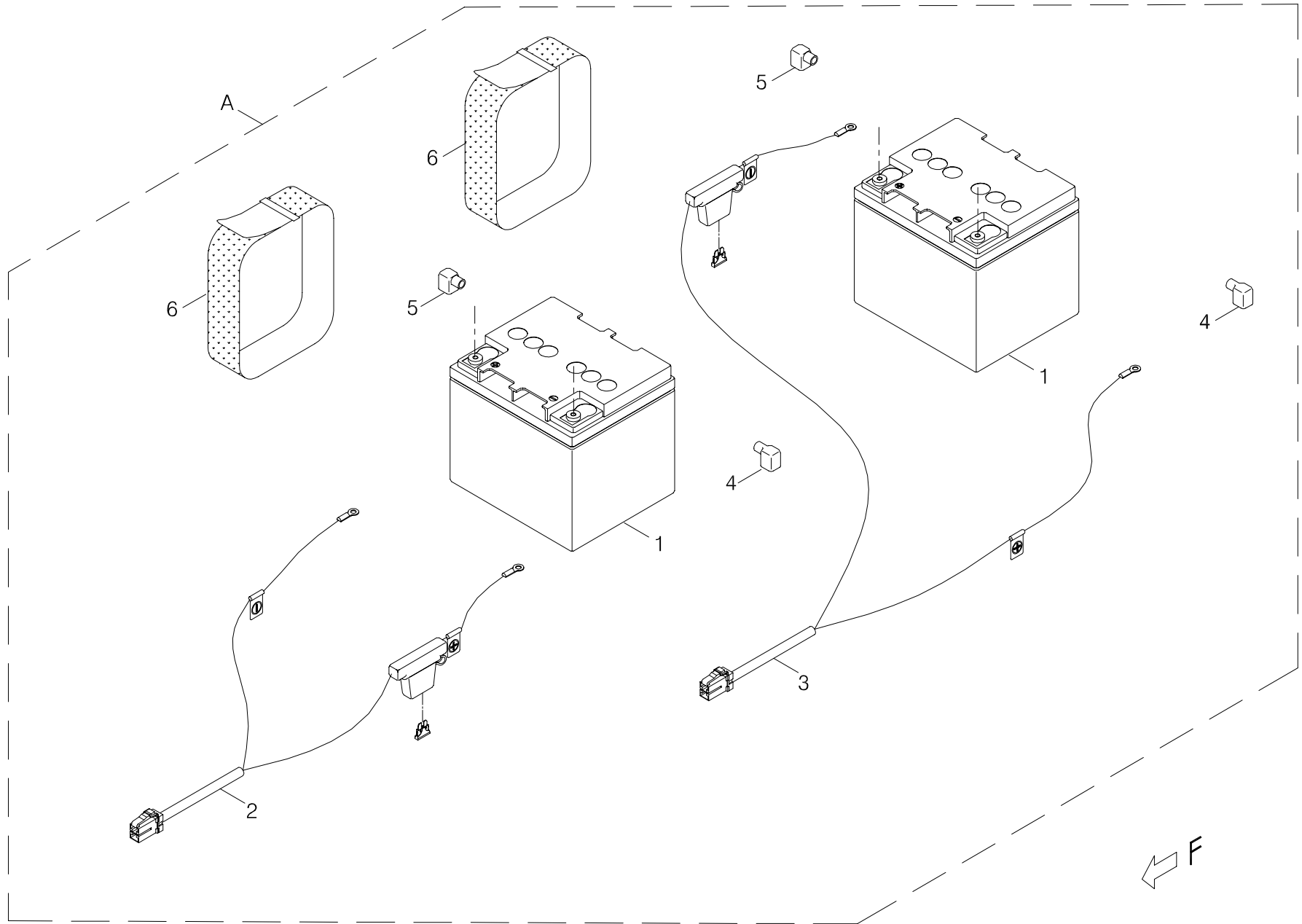


Index NO.	Part NO.	Qty.	Description	Specification	Remark
10-A	1331-00227-0150	1	Chassis Cover Assembly	w/ Decal, P424L, Black,Injection Forming	蓋板總成(含貼紙)/P424L(黑)射出(110V 120V )
10-1	2331-00113-0050-A2	1	Chassis cover	HOTSPOT-F,Black,Injection	蓋板/G424L(黑)射出
10-2	203511-00204	1	Charger cover	HOTSPOT-F	後活動蓋/G424L
10-3	301123-10	2	Warning Sticker	N23-10,Front Panel	三角型警告貼紙/N23-10
10-4	301174-45-A2	1	Warning Sticker	N74-45, A2	警告貼紙/N74-45(A2)
10-5	301123-41	1	Warning Sticker	N23-41	三角型警告貼紙/N23-41
10-6	301187-15	2	ON-BRAKE-OFF Label	N87-15, White Sign	ON-BRAKE-OFF貼紙/N87-15 (透白)(輪椅車用)
10-7	203103-66500	2	Velcro	25W*25M,Hook	自黏扣帶(勾面)/25W*25M(整捲裁115L,勾面)
10-8	203103-66500	2	Velcro	25W*25M,Hook	自黏扣帶(勾面)/25W*25M(整捲裁105L,勾面)
10-9	203103-66500	2	Velcro	25W*25M,Hook	自黏扣帶(勾面)/25W*25M(整捲裁80L,勾面)
10-10	203103-66500	2	Velcro	25W*25M,Hook	自黏扣帶(勾面)/25W*25M(整捲裁47L,勾面)
10-11	203103-66500	2	Velcro	25W*25M,Hook	自黏扣帶(勾面)/25W*25M(整捲裁35L,勾面)
10-12	301130-03	1	Instruction Sticker	N30-3,CHARGE,AC 100V-120V	指示貼紙/N30-3 (CHARGE)AC 100V-120V透白
10-13	301217-05-A2	1	Trademark Decal, SHOPRIDER	T17-5-A2, 78.5*32	商標貼紙/T17-5-A2 (SHOPRIDER) 78.5*32
			----- * -----		
10-14	-----	REF(1)	Side cover	Left,Burgundy,Injection	輪側蓋(左)
10-15	-----	REF(1)	Side cover	Right,Burgundy,Injection	輪側蓋(右)
10-16	203508-00101-A2	1	Battery cover	HOTSPOT-F,Black,Injection	電瓶護蓋/G424L(黑)射出
10-17	203109-00101-A3	1	Fairing	HOTSPOT,Black,Injection	前飾蓋/G424L(黑)射出(無孔)A3
			----- * -----		
10-18	301123-35	1	Warning Sticker	N23-35	三角型警告貼紙/N23-35,(配合服務記錄卡)



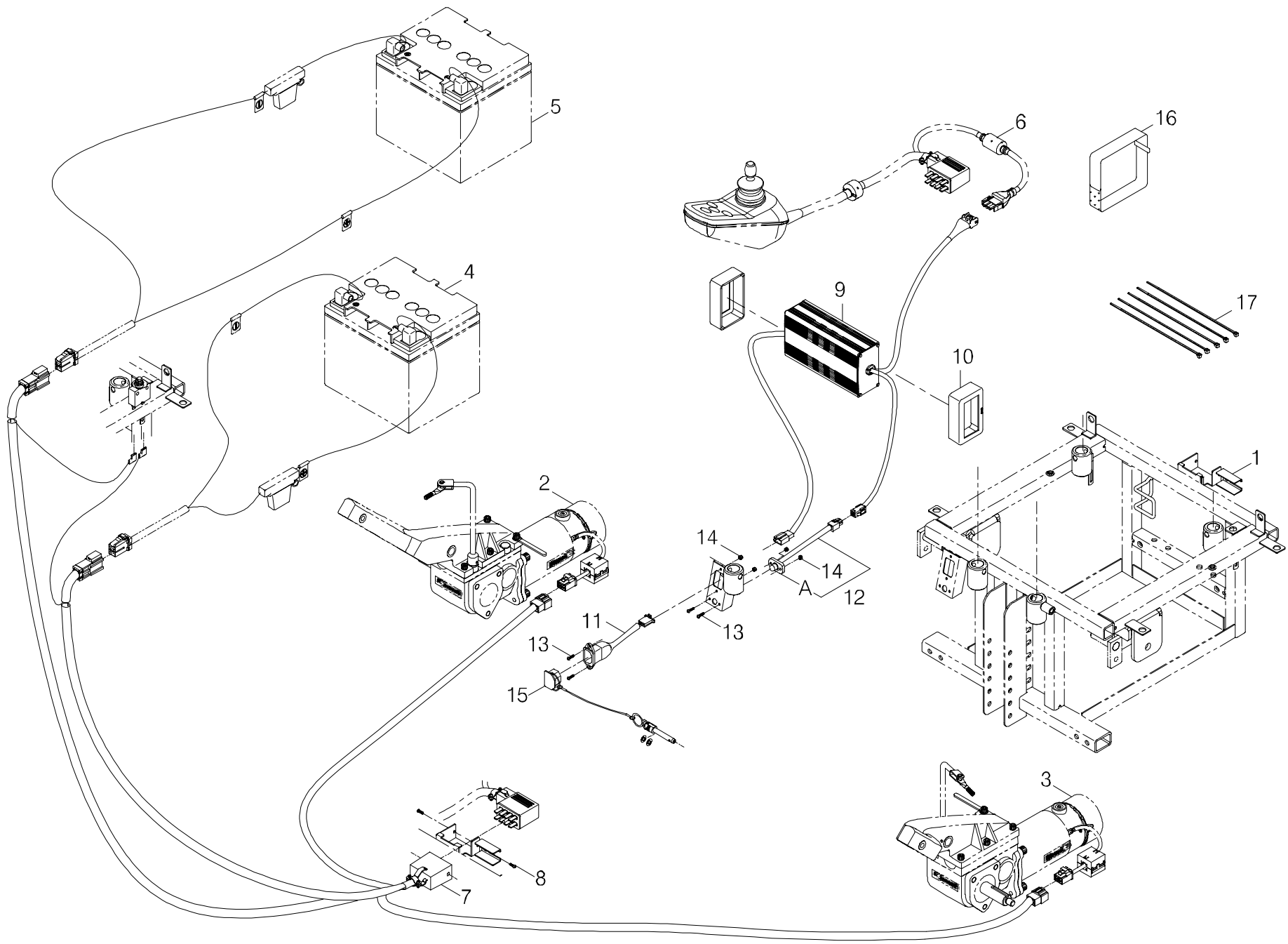
Index NO.	Part NO.	Qty.	Description	Specification	Remark
11-A	1335-00201-22	1	SHROUD CANDY RED FULL	HOTSPOT-F,INJECTION	輪側蓋總成(含左右及貼紙)/G424L(棗紅)射出
11-1	1335-00102-22-A4	1	Side cover	HOTSPOT-F,Left,Burgundy,Injection	輪側蓋(左)/G424L(棗紅)射出素紅(A4)
11-2	1335-00103-22-A4	1	Side cover	HOTSPOT-F,Right,Burgundy,Injection	輪側蓋(右)/G424L(棗紅)射出素紅(A4)
11-3	301123-11	2	Patent Warning Sticker	N23-11	三角型警告專利貼紙/N23-11/UL7
11-4	203103-80100	4	Velcro	25W*25M,Loop	自黏扣帶(毛面)/25W*25M(整捲裁30L)
11-5	203103-80100	4	Velcro	25W*25M,Loop	自黏扣帶(毛面)/25W*25M(整捲裁90L)
11-6	203103-80100	2	Velcro	25W*25M,Loop	自黏扣帶(毛面)/25W*25M(整捲裁105L)
11-7	-----	REF(1)	Chassis cover assembly		蓋板總成
			----- * -----		
11-A	1335-00201-42	1	SHROUD BLUE FULL	HOTSPOT-F,INJECTION	輪側蓋總成(含左右及貼紙)/G424L(深藍)射出
11-1	1335-00102-42-A4	1	Side cover	HOTSPOT-F,Left,Blue,Injection	輪側蓋(左)/G424L(深藍)射出素深藍(A4)
11-2	1335-00103-42-A4	1	Side cover	HOTSPOT-F,Right,Blue,Injection	輪側蓋(右)/G424L(深藍)射出素深藍(A4)
11-3	301123-11	2	Patent Warning Sticker	N23-11	三角型警告專利貼紙/N23-11/UL7
11-4	203103-80100	4	Velcro	25W*25M,Loop	自黏扣帶(毛面)/25W*25M(整捲裁30L)
11-5	203103-80100	4	Velcro	25W*25M,Loop	自黏扣帶(毛面)/25W*25M(整捲裁90L)
11-6	203103-80100	2	Velcro	25W*25M,Loop	自黏扣帶(毛面)/25W*25M(整捲裁105L)
11-7	-----	REF(1)	Chassis cover assembly		蓋板總成
			----- * -----		

Index NO.	Part NO.	Qty.	Description	Specification	Remark
11-A	1335-00201-50	1	SHROUD BLACK FULL	HOTSPOT-F,INJECTION	輪側蓋總成(含左右及貼紙)/G424L(黑)射出
11-1	1335-00102-50-A4	1	Side cover	HOTSPOT-F,Left,Black,Injection	輪側蓋(左)/G424L(黑)射出素黑(A4)
11-2	1335-00103-50-A4	1	Side cover	HOTSPOT-F,Black,Injection	輪側蓋(右)/G424L(黑)射出素黑(A4)
11-3	301123-11	2	Patent Warning Sticker	N23-11	三角型警告專利貼紙/N23-11/UL7
11-4	203103-80100	4	Velcro	25W*25M,Loop	自黏扣帶(毛面)/25W*25M(整捲裁30L)
11-5	203103-80100	4	Velcro	25W*25M,Loop	自黏扣帶(毛面)/25W*25M(整捲裁90L)
11-6	203103-80100	2	Velcro	25W*25M,Loop	自黏扣帶(毛面)/25W*25M(整捲裁105L)
11-7	-----	REF(1)	Chassis cover assembly		蓋板總成
			----- * -----		
11-A	1335-00201-65	1	SHROUD CHAMPAGNE FULL	HOTSPOT-F,INJECTION	輪側蓋總成(含左右及貼紙)/G424L(香檳)射出
11-1	1335-00102-65-A4	1	Side cover	HOTSPOT-F,Left,Champagne,Injection	輪側蓋(左)/G424L(香檳)射出素香檳(A4)
11-2	1335-00103-65-A4	1	Side cover	HOTSPOT-F,Right,Champagne,Injection	輪側蓋(右)/G424L(香檳)射出素香檳(A4)
11-3	301123-11	2	Patent Warning Sticker	N23-11	三角型警告專利貼紙/N23-11/UL7
11-4	203103-80100	4	Velcro	25W*25M,Loop	自黏扣帶(毛面)/25W*25M(整捲裁30L)
11-5	203103-80100	4	Velcro	25W*25M,Loop	自黏扣帶(毛面)/25W*25M(整捲裁90L)
11-6	203103-80100	2	Velcro	25W*25M,Loop	自黏扣帶(毛面)/25W*25M(整捲裁105L)
11-7	-----	REF(1)	Chassis cover assembly		蓋板總成



Index NO.	Part NO.	Qty.	Description	Specification	Remark
12-A	8305-00104-05-A2	1	Battery Pack Complete	for HOTSPOT-F, 50Ah	加電瓶模組/G424L, 50Ah
12-1	109101-89209-50	2	SLA Battery w/ Carton	12V 50Ah, ASR 12500	鉛酸電瓶(含紙箱)/ASR 12500 12V 50Ah
12-2	2370-00104-00	1	Battery cable	+,GL-424-F1,70A Fuse	電瓶線(正)/GL-424-F1,70A Fuse
12-3	2370-00203-00	1	Battery Cable	-,GL-424-F2,70A Fuse	電瓶線(負)/GL-424-F2,70A Fuse
12-4	209913-88102	2	Protection	R,H13	電瓶線護套(紅)/H13(15*29)
12-5	209914-88102	2	Protection	B,H13	電瓶線護套(黑)/H13(15*29)
12-6	209919-88100	2	Carrying Strap	50Wmm*24A+66B CM	電瓶提攜帶(短)/50Wmm*24A+66B CM





Index NO.	Part NO.	Qty.	Description	Specification	Remark
13	-----		Control and battery wiring illustration		控制及電瓶導線總成
13-1	-----	REF(1)	Chassis		車架
			-----*-----		
13-2	-----	REF(1)	Motor/Gearbox/Brake Right Full		馬達剎車減速箱總成
13-3	-----	REF(1)	Motor/Gearbox/Brake Left Full		馬達剎車減速箱總成
			-----*-----		
13-4	-----	REF(1)	Battery assembly w/ hand carry		電瓶總成(前)
13-5	-----	REF(1)	Battery assembly w/ hand carry		電瓶總成(後)
			-----*-----		
13-6	-----	REF(1)	Generic controller assembly		搖桿控制器總成
			-----*-----		
13-7	2370-01101-00	1	Main control cable	GL-424-J1	主控制線/GL-424-J1(ES007)
13-8	5005-03010-110	2	Screw	1APHMC-062400 6# 3/8	十字圓頭螺絲/1APHMC-062400 6#*3/8(鍍鎳)
13-9	109201-88113-A7	1	On-board Charger Assembly	4A, #7-1, A7, Cable Length 150L	隨車式充電機總成 (HM01)黑色/#7-1(4A)PIHSIANG(線長150L)(A7)
13-10	209915-00102	2	Grommet	HOTSPOT-M/F	充電機橡膠墊/G424M/L 4A隨車式充電機專用
13-11	2370-00901-00	1	Charging cable	GL-424-H	充電線(短)/GL-424-H
13-12	106116-00100-A2	1	Indicator lamp	#7-1	指示燈加工組/ #7-1 G424M/L (委外)
13-A	4001455-02-A2	REF(1)	Bracket	A455-2(A2)	指示燈固定片(ABS咬花)/A455-2 (G424M/L)A2
13-13	5005-03012-710	4	Screw	M3*P0.5*12L,Black Galvanized	十字圓頭螺絲/M3*P0.5*12L (鍍黑鋅)
13-14	5012-03006-200	4	Nyloc Nut	M3*P0.5*6,Multicolored Galvanized	尼龍螺帽/M3*P0.5*6邊 (五彩)
13-15	202922-00105-A2	1	Connecting pin	8*40L w/i AC Charger Plug Cap	連接銷(含充電機插座蓋總成)/ 8*40L(含伸縮帶)
13-17	209920-77401	1	Fastening strap	25mmW*15A+33.5B cm	固定帶(尼龍織帶)/25mmW*15A+33.5B cm
13-18	505201-02500-50	5	Cable Tie	CV-250B	束帶/CV-250B
-----	209201-88104	1	Power cord	North America,Asia,4ft	充電機電源線/美洲、亞洲 (ZGDZ1),4ft

# Wiring Diagram for P424L

