

GMP
ISO9001
ISO14001
ISO13485
CERTIFIED

PIHSIANG®

SHOPRIDER®

MODEL: **TE-888WNLS**

ELECTRIC POWER CHAIR

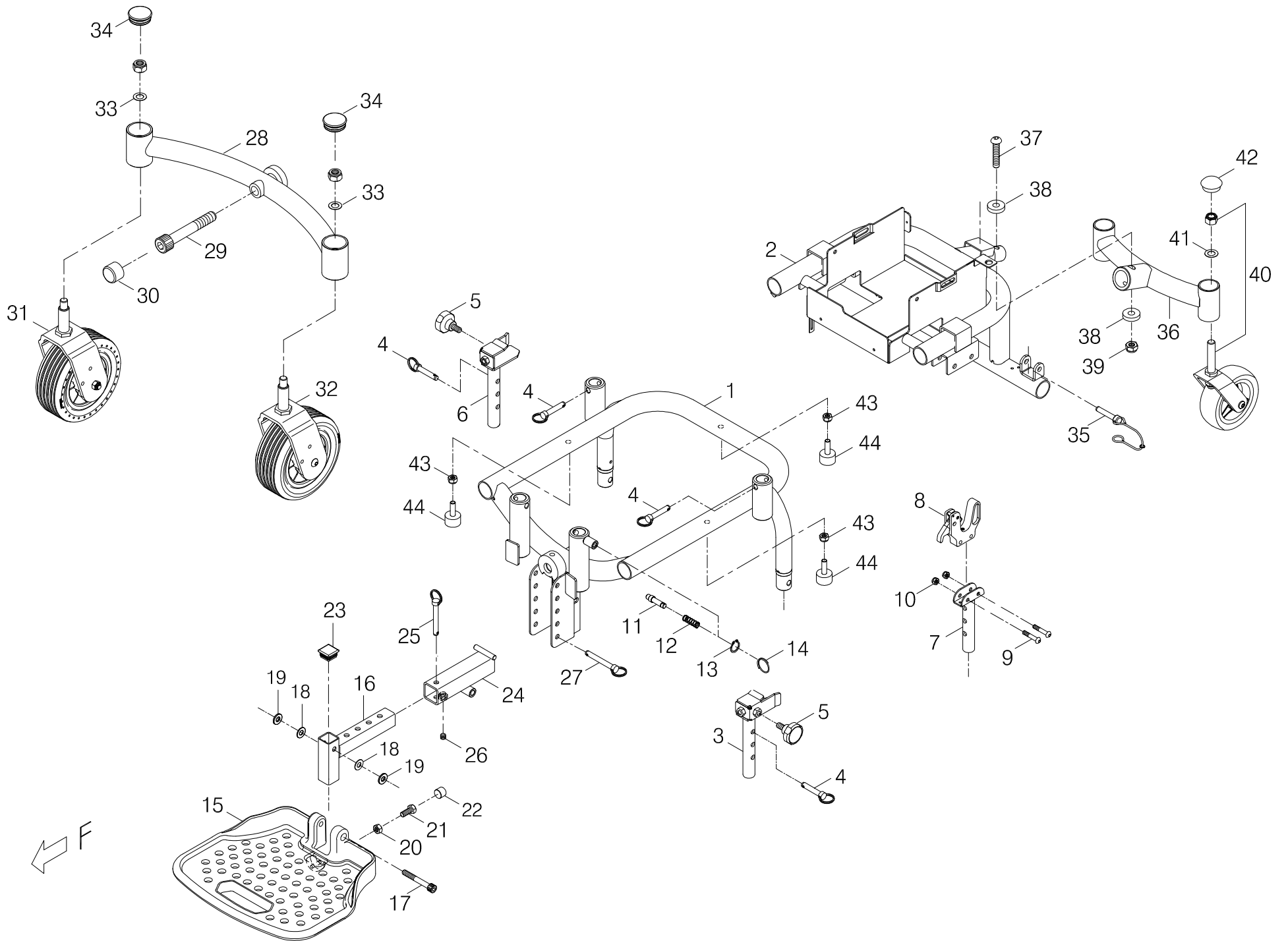
(PATENTED)

PIHSIANG MACHINERY MFG. CO., LTD.

*NO.108, HSIN-HE ROAD, HSIN-FENG HSIANG 304
HSINCHU COUNTY, TAIWAN*

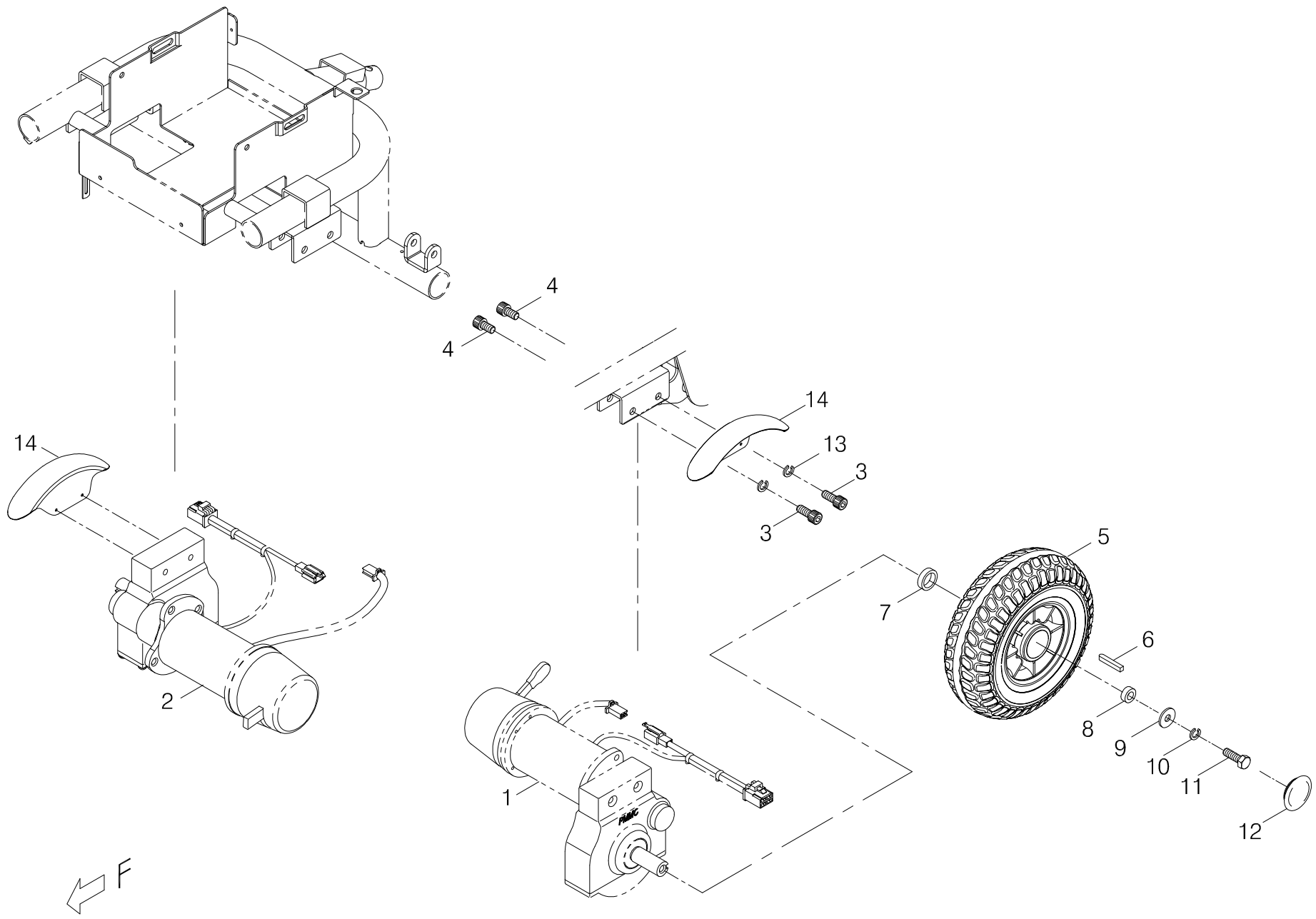
TABLE OF CONTENTS
ILLUSTRATION

| | | |
|---------|---|-------|
| INDEX.1 | FRAME ASSEMBLY ILLUSTRATION ----- | 1-1~3 |
| INDEX.2 | FRAME ASSEMBLY ILLUSTRATION ----- | 2-1 |
| INDEX.3 | DRIVE-TRAIN ASSEMBLY----- | 3-1 |
| INDEX.4 | DRIVE-TRAIN ASSEMBLY----- | 4-1 |
| INDEX.5 | SEAT ASSEMBLY ----- | 5-1 |
| INDEX.6 | JOYSTICK CONTROLLER w/ARMREST ASSEMBLY----- | 6-1~2 |
| INDEX.7 | CHASSIS COVER ASSEMBLY----- | 7-1 |
| INDEX.8 | BATTERY CABLES ----- | 8-1 |
| INDEX.9 | CONTROL AND BATTERY WIRING ILLUSTRATION --- | 9-1 |
| | APPENDIX (1) - WIRING DIAGRAM----- | |
| | APPENDIX (2) - STICKER AND DECAL ----- | |

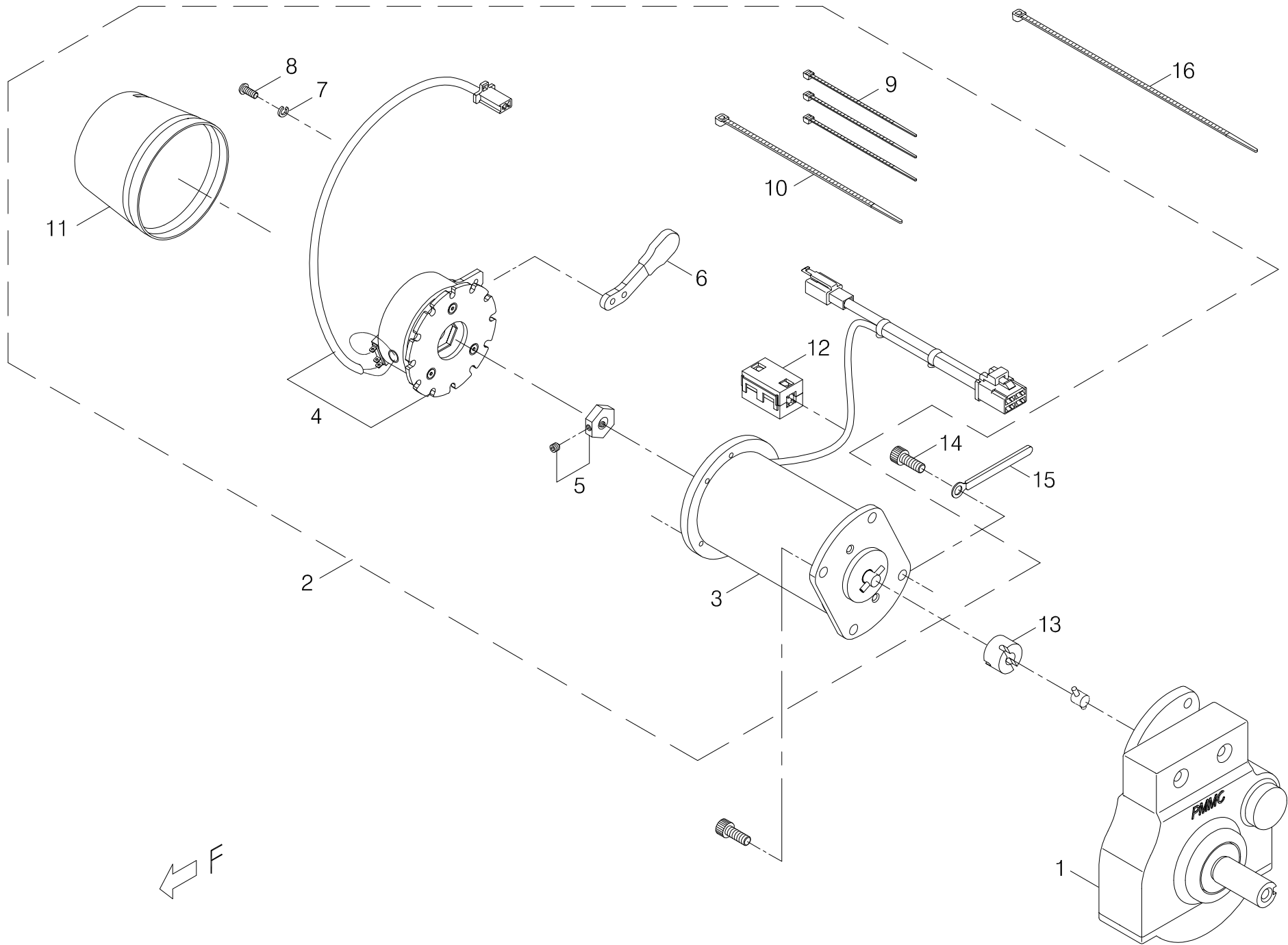


| Index NO. | Part NO. | Qty. | Description | Specification | Remark |
|-----------|-------------------|------|---------------------------------|--|--------|
| 1 | ----- | | Frame assembly illustration | | |
| 1-1 | 1321-00118-02 | 1 | Upper Chassis | 888WNLS,Black | |
| 1-2 | 1321-00118-03-A3 | 1 | Lower Chassis | 888WNLS(A3), Black Texture Coating | |
| | | | ----- * ----- | | |
| 1-3 | 1340-00308-00 | 1 | Strut | Left Front, 888WNLS | |
| 1-4 | 202922-88100 | 4 | Pin | ∅ 7.8*40L,PP08040B | |
| 1-5 | 5008-08016-210-A2 | 2 | Tighten Knob | M8*P1.25*17L,Multicolored Galvanized, A2 | |
| 1-6 | 1340-00309-00 | 1 | Strut | Right Front, 888WNLS | |
| 1-7 | 1340-00306-00 | 2 | Strut | 888WAM/L,Rear | |
| 1-8 | 202913-00102 | 2 | Seat Latch | 888WNLSPGKUL7-4, Yellow Lever | |
| 1-9 | 5002-06025-720 | 4 | CAP HEAD ALLEN SCREW | M6*P1.0*25L,Black Galvanized | |
| 1-10 | 5012-06010-701 | 4 | Nyloc Nut | M6*P1.0*10*6t,Black Galvanized | |
| 1-11 | 4003291-02 | 1 | Pin | C291-2 | |
| 1-12 | 202929-00100 | 1 | SPRING FOR LOCKING PIN | ∅ 0.8*10*30L | |
| 1-13 | 505401-00800-00 | 1 | Snap ring | STW-8,Black | |
| 1-14 | 204512-66700 | 1 | Ring | 1.5* ∅ 25.4 | |
| 1-15 | 2329-00100-11-A2 | 1 | Footrest | Black, UL7-WR, A2 | |
| 1-16 | 1329-00400-09 | 1 | Adjustable Tubing for Footplate | G424M/L,888WAM/L | |
| 1-17 | 5002-08060-720 | 1 | CAP HEAD ALLEN SCREW | M8*P1.25*60L,Black Galvanized | |
| 1-18 | 4001406-04 | 2 | Flat Washer | A406-4, ∅ 8.5*18*1t | |
| 1-19 | 4001406-05 | 2 | Flat Washer | A406-5, ∅ 8.5*18*2t | |
| 1-20 | 5011-08013-700 | 1 | Hex Nut | M8*P1.25*13,Black Galvanized | |
| 1-21 | 5001-08025-710 | 1 | Hex head screw | M8*P1.25*25L,Black Galvanized | |
| 1-22 | 209929-77401 | 1 | Rubber Cover | Black, ∅ 12*12L | |

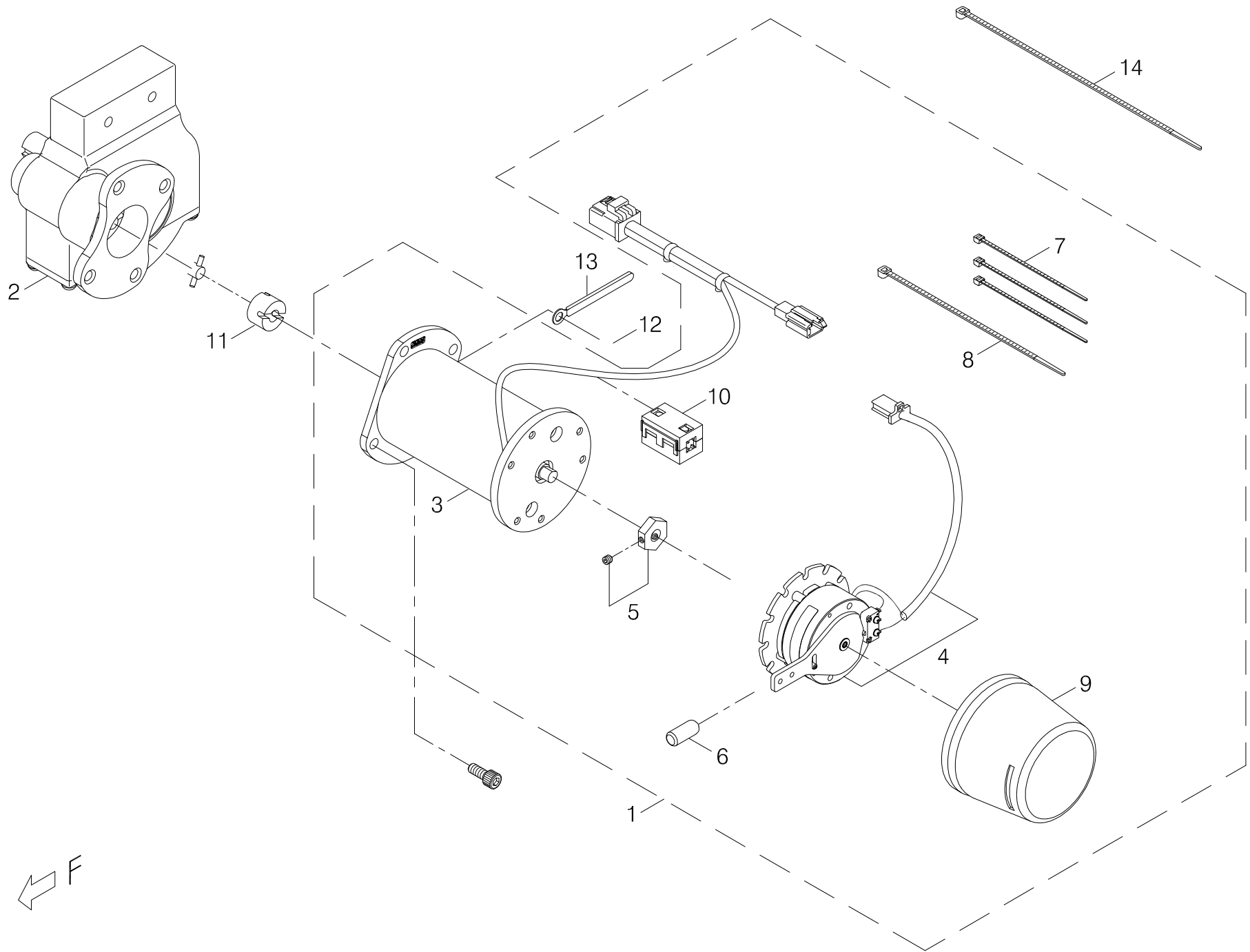
| Index NO. | Part NO. | Qty. | Description | Specification | Remark |
|-----------|------------------|------|-----------------------------|--------------------------------------|--------|
| 1-23 | 202303-88104 | 1 | Ball butoon | Short,25*25 | |
| 1-24 | 1329-00400-10 | 1 | Sleeve for Footplate Ass'y | G424M/L,888WAM/L | |
| 1-25 | 202922-00201 | 1 | Connecting pin | φ 8.0*60L | |
| 1-26 | 5004-08008-311 | 1 | Set Screw | M8*1.25*8L | |
| 1-27 | 202922-00201 | 1 | Connecting pin | φ 8.0*60L | |
| | | | -----*----- | | |
| 1-28 | 1318-00108-02-A2 | 1 | Front Crossbeam w/ Bearings | 888WNLS(A2),Black Texture | |
| 1-29 | 5002-16080-721 | 1 | Allen Bolt, for 888WNLL | M16*P2.0*80L* 50TL, Black Galvanized | |
| 1-30 | 209931-00104 | 1 | Rubber Cap | φ 28.5* φ 22.5*20mm,888WNLSP | |
| | | | -----*----- | | |
| 1-31 | 1351-00602-00-A4 | 1 | Front Caster Wheel | 149*50, Right, G424M/L, A4 | |
| | | | -----*----- | | |
| 1-32 | 1351-00601-00-A4 | 1 | Front Caster Wheel | 149*50, Left, G424M/L, A4 | |
| | | | -----*----- | | |
| 1-33 | 5021-12021-210 | 2 | Flat Washer | φ 12*21*0.5t,Multicolored Galvanized | |
| | | | -----*----- | | |
| 1-34 | 209931-00103 | 2 | Rubber Cap | φ 38,888WNL | |
| 1-35 | 202922-88206-A2 | 1 | Connection Pin | φ 8, w/o Chain, Black, A2 | |
| 1-36 | 1318-00108-03-A2 | 1 | Rear Crossbeam w/ Bearings | 888WNLS(A2),Black Texture | |
| 1-37 | 5003-10055-721 | 1 | Button Head Allen Bolt | M10*P1.5*55L/30L,Black Galvanized | |
| 1-38 | 209908-89500 | 2 | Rubber Gasket | Round, φ ID11* φ OD25*3T | |
| 1-39 | 5012-10017-701 | 1 | Nylon lock nut | M10*P1.5*17,Multicolor | |
| | | | -----*----- | | |
| 1-40 | 1351-00700-00 | 2 | Caster assembly | 4",G424SM | |



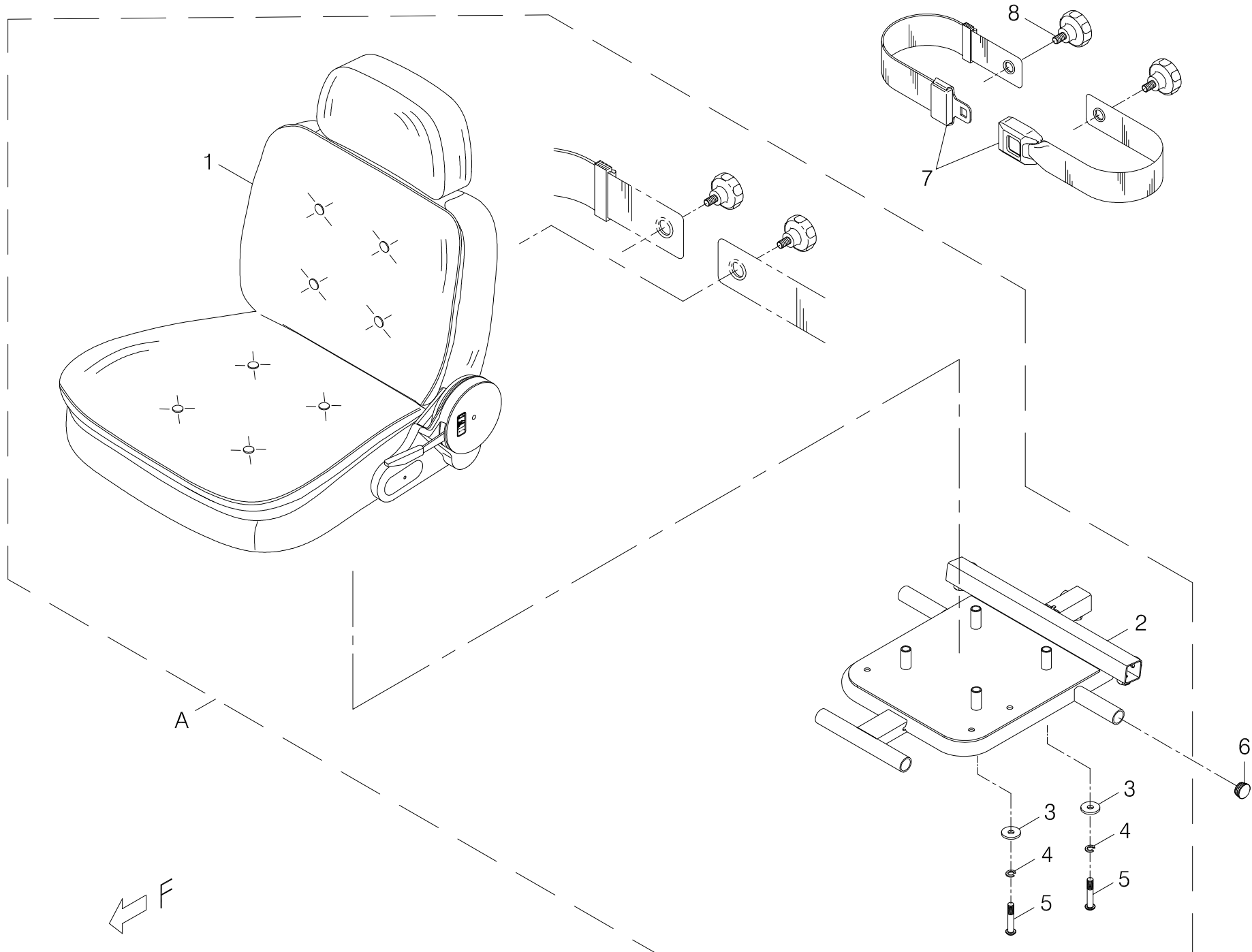
| Index NO. | Part NO. | Qty. | Description | Specification | Remark |
|-----------|-----------------|--------|--------------------------------|--------------------------------------|--------|
| 2 | ----- | | Frame assembly illustration | | |
| 2-1 | ----- | REF(1) | Drive-Train Assembly | | |
| 2-2 | ----- | REF(1) | Drive-Train Assembly | | |
| 2-3 | 5002-08020-720 | 4 | CAP HEAD ALLEN SCREW | M8*P1.25*20L,Black Galvanized | |
| 2-4 | 5002-08015-720 | 4 | CAP HEAD ALLEN SCREW | M8*P1.25*15L,Black Galvanized | |
| | | | ----- * ----- | | |
| 2-5 | 105201-69101 | 2 | Rear Wheel Assembly, Gray Tire | PU 200*70,Black Plastic Rim w/AU Hub | |
| 2-6 | 505301-00505-03 | 2 | Drive Key | 5*5*30 | |
| 2-7 | 4005007-00 | 2 | Spacer | H7, ϕ 17ID* ϕ 23OD*6T | |
| 2-8 | 4005008-00 | 2 | Spacer | H8, ϕ 9ID* ϕ 16OD*6T | |
| 2-9 | 4001428-00 | 2 | Flat Washer | A428, ϕ 8.4*26*3t | |
| 2-10 | 5022-08013-210 | 2 | Spring washer | ϕ 8*13,Multicolored Galvanized | |
| 2-11 | 5001-08025-440 | 2 | Hex Head Bolt | M8*P1.25*25L,SUS304 | |
| 2-12 | 209931-67802 | 2 | End Cap | 40*4-4.5 | |
| 2-13 | 5022-08013-710 | 4 | Spring Washer | ϕ 8*13,Black Galvanized | |
| 2-14 | 203515-00101-A2 | 2 | Black Fender | 888WNLS, ABS by Vacuum Form, A2 | |
| | | | | | |
| | | | | | |
| | | | | | |
| | | | | | |
| | | | | | |
| | | | | | |
| | | | | | |
| | | | | | |
| | | | | | |
| | | | | | |



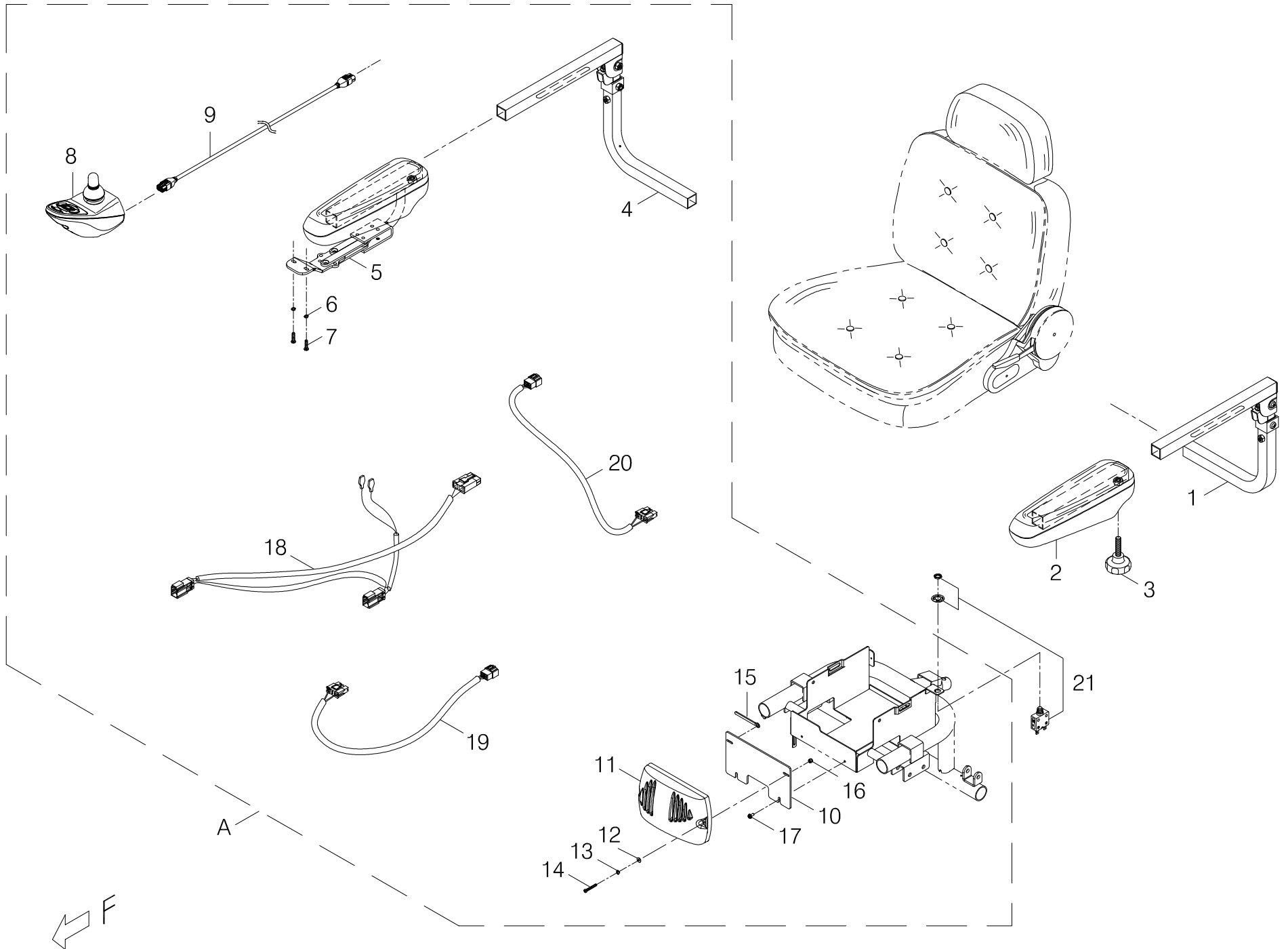
| Index NO. | Part NO. | Qty. | Description | Specification | Remark |
|-----------|--------------------|------|----------------------------------|--------------------------------------|--------|
| 3 | 1300-00700-08 | 1 | Drive-Train Assembly | Left, 7 μ M+(#3)+(#10), 888WNLS | |
| 3-1 | 1304-00500-05 | 1 | Transaxle Assembly(C) | #10(G424SM/UL8W), Black | |
| 3-2 | 1301-00105-05 | 1 | Motor and Brake Assembly | Left, 787 μ M+ #3-1 | |
| 3-3 | 100201-03011 | 1 | Motor | 7 μ M #1-1, 4950rpm | |
| 3-4 | 100303-00107 | 1 | Electromagnetic Brake Assembly | #3-1L,WR198A407P1, UL7-W-L3 | |
| 3-5 | 200302-88101-A2 | 1 | Driving Hex Axle for Brake Disc | #2-1, 787N, A2 | |
| 3-6 | 4001380-15 | 1 | Free Wheel Lever | A380-15 | |
| 3-7 | 5022-04007-210 | 5 | Spring Washer | ϕ 4*7*1.25t, Multicolored Galvanized | |
| 3-8 | 5005-04010-210 | 5 | Philip Screw | M4*P0.7*10L, Multicolor Galvanized | |
| 3-9 | 505201-00940-50 | 3 | Cable Tie | CV-094B | |
| 3-10 | 505201-01500-50-A2 | 1 | Cable Tie | CV-150SB/150L*2.5W*1.2T | |
| 3-11 | 2399-00201-00 | 1 | Protect Cover for Magnetic Brake | UL7-W/WD | |
| 3-12 | 206216-88102 | 1 | Magnetic core | LF-65 | |
| | | | ----- * ----- | | |
| 3-13 | 200920-78700 | 1 | Connector | ϕ 8*20*13L | |
| 3-14 | 5002-06016-220 | 4 | CAP HEAD ALLEN SCREW | M6*P1.0*16L,Multicolored Galvanized | |
| 3-15 | 4001393-03 | 1 | Hook Plate | A393-3(ϕ 6.1*60L) | |
| 3-16 | 505201-02500-50 | 1 | cable Tie | CV-250B | |
| ----- | 301174-74 | 1 | Warning Sticker | N74-74, for Caution of Hot | |
| ----- | 301179-04 | 1 | Trademark Sticker | N79-4 | |
| | | | ----- * ----- | | |
| ----- | 301187-20 | 1 | OFF-BRAKE-ON LABEL | N87-20, w/ Power Wheelchair Sign | |
| | | | | | |
| | | | | | |



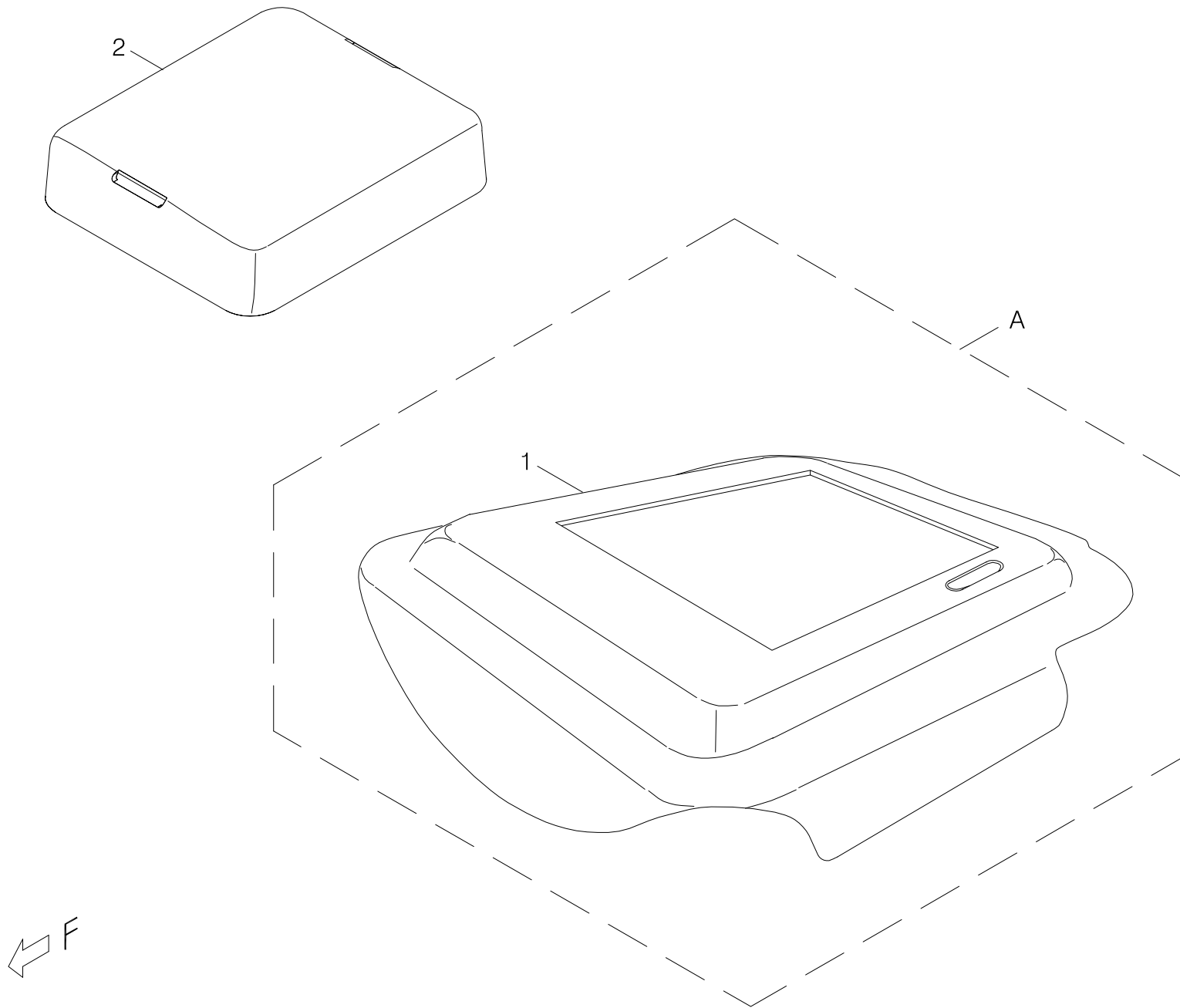
| Index NO. | Part NO. | Qty. | Description | Specification | Remark |
|-----------|--------------------|------|----------------------------------|-------------------------------------|--------|
| 4 | 1300-00701-08 | 1 | Drive-Train Assembly | Right, 7μM+(#3)+(#10), 888WNLS | |
| 4-1 | 1304-00500-05 | 1 | Transaxle Assembly(C) | #10(G424SM/UL8W), Black | |
| 4-2 | 1301-00105-06 | 1 | Motor and Brake Assembly | Right, 787μM+ #3-1D, Yellow Cap | |
| 4-3 | 100201-03011 | 1 | Motor | 7μM #1-1, 4950rpm | |
| 4-4 | 100303-00107 | 1 | Electromagnetic Brake Assembly | #3-1L,WR198A407P1, UL7-W-L3 | |
| 4-5 | 200302-88101-A2 | 1 | Driving Hex Axle for Brake Disc | #2-1, 787N, A2 | |
| 4-6 | 209929-88104 | 1 | Vinyl cover | Yellow, ϕ 6.8*23L | |
| 4-7 | 505201-00940-50 | 3 | Cable Tie | CV-094B | |
| 4-8 | 505201-01500-50-A2 | 1 | Cable Tie | CV-150SB/150L*2.5W*1.2T | |
| 4-9 | 2399-00201-00 | 1 | Protect Cover for Magnetic Brake | UL7-W/WD | |
| 4-10 | 206216-88102 | 1 | Magnetic core | LF-65 | |
| | | | ----- * ----- | | |
| 4-11 | 200920-78700 | 1 | Connector | ϕ 8*20*13L | |
| 4-12 | 5002-06016-220 | 4 | CAP HEAD ALLEN SCREW | M6*P1.0*16L,Multicolored Galvanized | |
| 4-13 | 4001393-03 | 1 | Hook Plate | A393-3(ϕ 6.1*60L) | |
| 4-14 | 505201-02500-50 | 1 | cable Tie | CV-250B | |
| ----- | 301174-74 | 1 | Warning Sticker | N74-74, for Caution of Hot | |
| ----- | 301179-04 | 1 | Trademark Sticker | N79-4 | |
| ----- | 301187-20 | 1 | OFF-BRAKE-ON LABEL | N87-20, w/ Power Wheelchair Sign | |
| | | | | | |
| | | | | | |
| | | | | | |
| | | | | | |
| | | | | | |



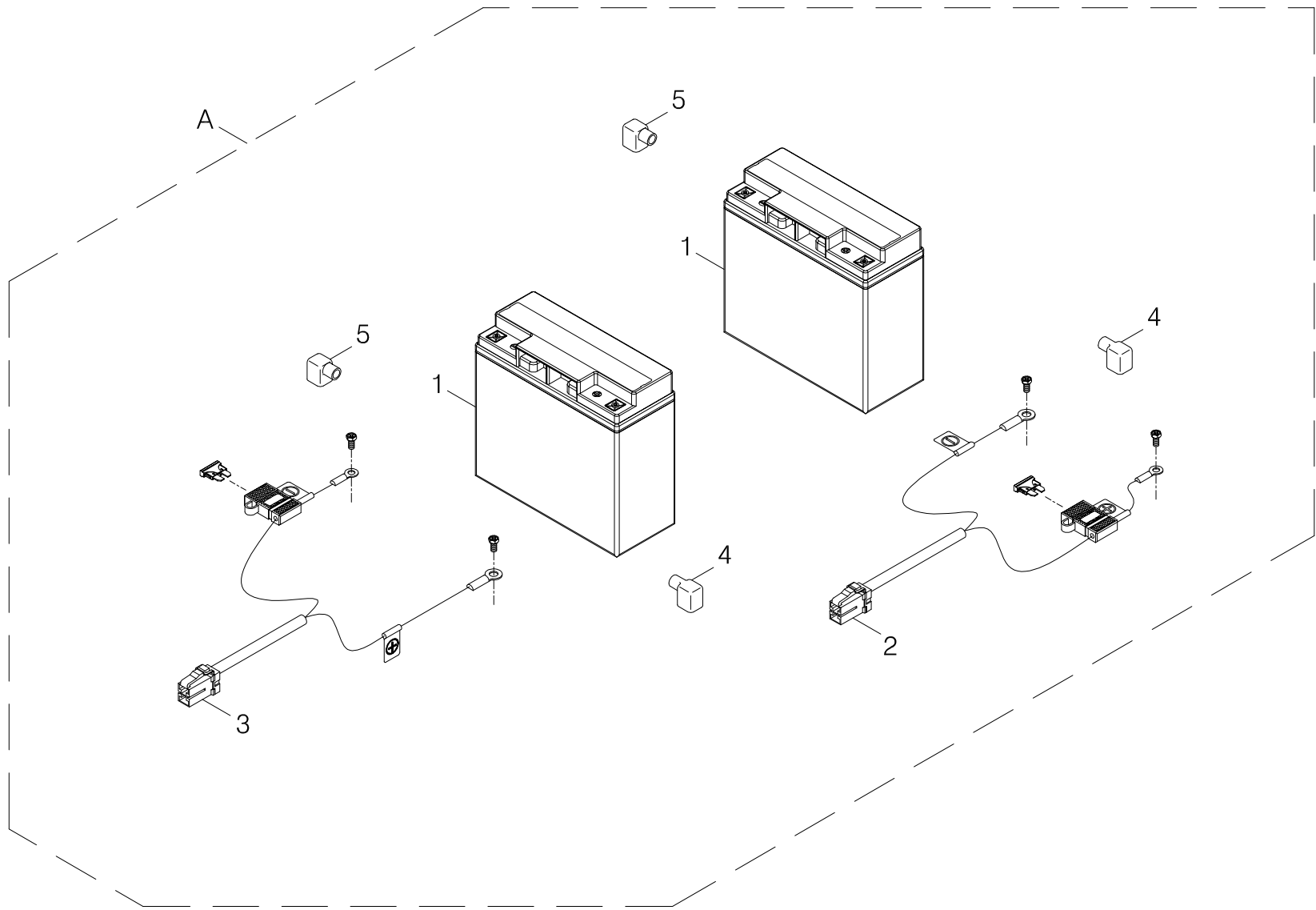
| Index NO. | Part NO. | Qty. | Description | Specification | Remark |
|-----------|-------------------|--------|--|---|--------|
| 5-A | 8303-00701-00 | 1 | Deluxe Seat Assembly | 18*18, Black Vinyl Cushion w/ Reclining | |
| 5-1 | 104018-00102-A3 | 1 | Black Vinyl Captain Seat,w/ Seat Cushion | 18"*18", w/ Reclining, A3 | |
| 5-2 | 204501-00106 | 1 | Seat frame | 888WNLS | |
| 5-3 | 4001428-05 | 4 | Flat Washer | A428-5, ⌀ 8.4*26*3t Black Galvanized | |
| 5-4 | 5022-08013-710 | 4 | Spring Washer | ⌀ 8*13,Black Galvanized | |
| 5-5 | 5001-08045-720 | 4 | Hex Head Bolt | M8*P1.25*45L,Black Galvanized | |
| ----- | 301174-31 | 1 | Caution Sticker | N74-31 | |
| ----- | 203103-88100 | REF(1) | Velcro | 50W*25M,Hook | |
| | | | ----- * ----- | | |
| 5-6 | 209931-77302-A2 | 2 | End Cap | D1201,7/8",/UL7-3 | |
| 5-7 | 300909-03 | 1 | Seat Belt | #4, 56" | |
| 5-8 | 5008-08020-210-A2 | 2 | Tighten Knob | M8*P1.25*17L,Multicolored Galvanized,A2 | |
| | | | | | |
| | | | | | |
| | | | | | |
| | | | | | |
| | | | | | |
| | | | | | |
| | | | | | |
| | | | | | |
| | | | | | |
| | | | | | |
| | | | | | |
| | | | | | |

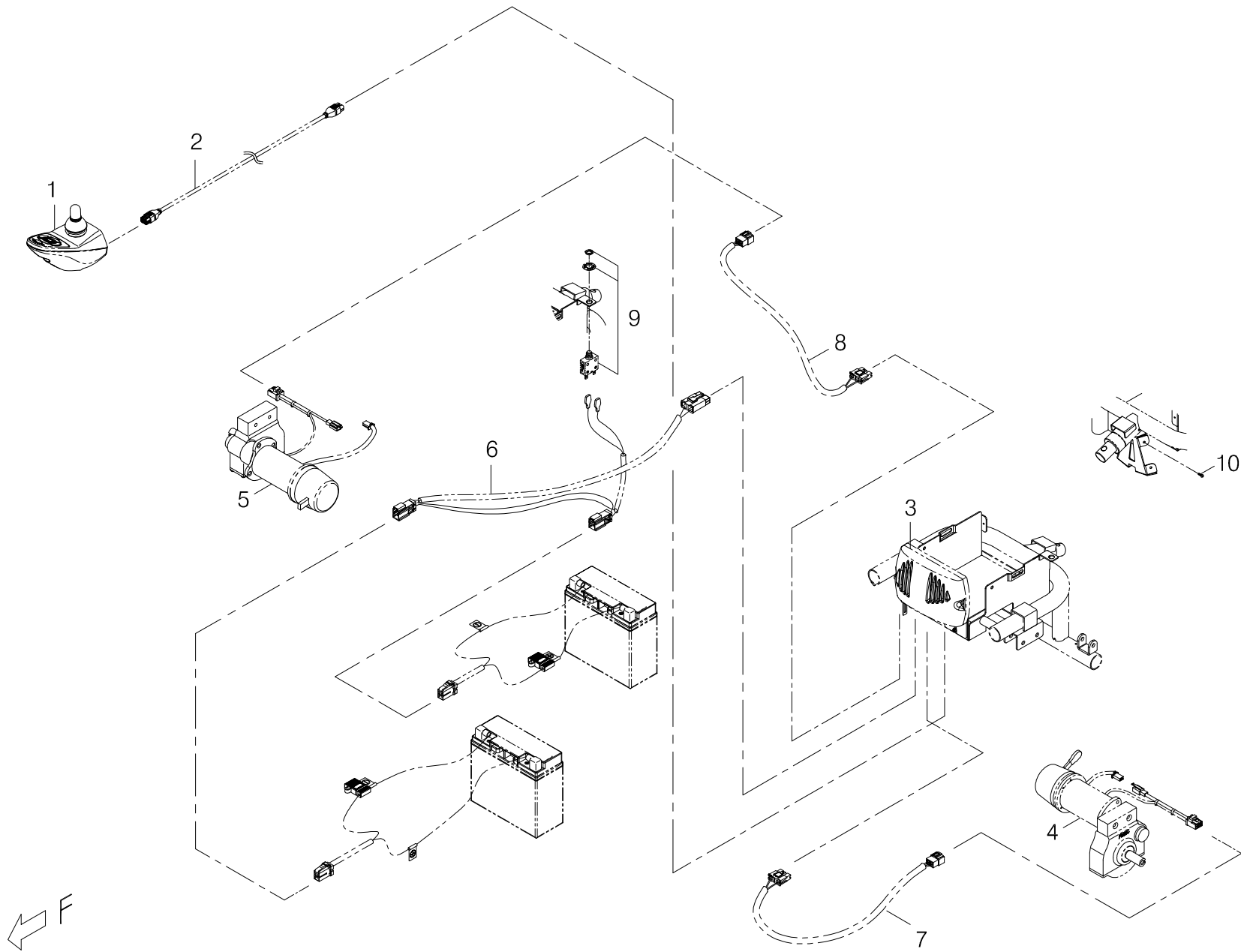


| Index NO. | Part NO. | Qty. | Description | Specification | Remark (for SHARK 40) |
|-----------|-------------------|------|---|--------------------------------------|--------------------------|
| 6 | ----- | | Seat ,arm assembly | | |
| 6-1 | 104308-66404-A2 | 1 | Arm rest assembly | #3,Left | |
| 6-2 | 104310-88102 | 1 | ARMPAD & ARMTUBE SLEEVE W | 30*30 | |
| 6-3 | 5008-10045-210-A2 | 1 | Knob | M10*47L,Multicolored Galvanized | |
| | | | -----*----- | | |
| 6-A | 1361-00410-15-A3 | 1 | Joystick Controller w/ Armrest Assembly | SHARK | |
| 6-4 | 104408-66400-A2 | 1 | Armrest assembly | #2,Right | |
| 6-5 | 1344-00100-08-A3 | 1 | Armrest Pad & Sleeve | Right -30*30/Adjustable, A425-12, A3 | |
| 6-6 | 5022-05008-710 | 2 | Spring Washer | § 5*8,Black Galvanized | |
| 6-7 | 5005-05015-710 | 2 | Screw | M5*P0.8*15L,Black Galvanized | |
| 6-8 | 1361-00114-02 | 1 | Joystick Controller | DK-REMD01, SHARK 40&60 | |
| 6-9 | 2361-00300-06 | 1 | Control Extension Cable | GSM80233, SHARK 40 | |
| 6-10 | 203510-00105-A4 | 1 | Bracket for Power Module | 888WNLM, VR2 & SHARK, A4 | |
| 6-11 | 1361-00104-07 | 1 | Main Controller / Power Module | DK-PMB-40 | |
| 6-12 | 5021-04010-210 | 2 | Flat Washer | § 4*10*1t, Multicolored Galvanized | |
| 6-13 | 5022-04007-210 | 2 | Spring Washer | § 4*7*1.25t, Multicolored Galvanized | |
| 6-14 | 5005-04030-210 | 2 | Philip Screw | M4*P0.7*30L, Multicolored Galvanized | |
| 6-15 | 4001393-03 | 1 | Hook Plate | A393-3(§ 6.1*60L) | |
| 6-16 | 5012-04007-200 | 2 | Nyloc Nut | M4*P0.7*7, Multicolored Galvanized | |
| 6-17 | 5005-05015-710 | 2 | Philip Cap Screw | M5*P0.8*15L,Black Galvanized | |
| 6-18 | 2370-00702-03 | 1 | Power Cable for SHARK 40&60 | WA-888WA-D1 | |
| 6-19 | 2370-00602-02 | 1 | Motor/Brake Cable, Right | WA-888WA-T1, SHARK 40&60 | |
| 6-20 | 2370-00602-03 | 1 | Motor/Brake Cable, Left | WA-888WA-T2, SHARK 40&60 | |
| | | | | | |



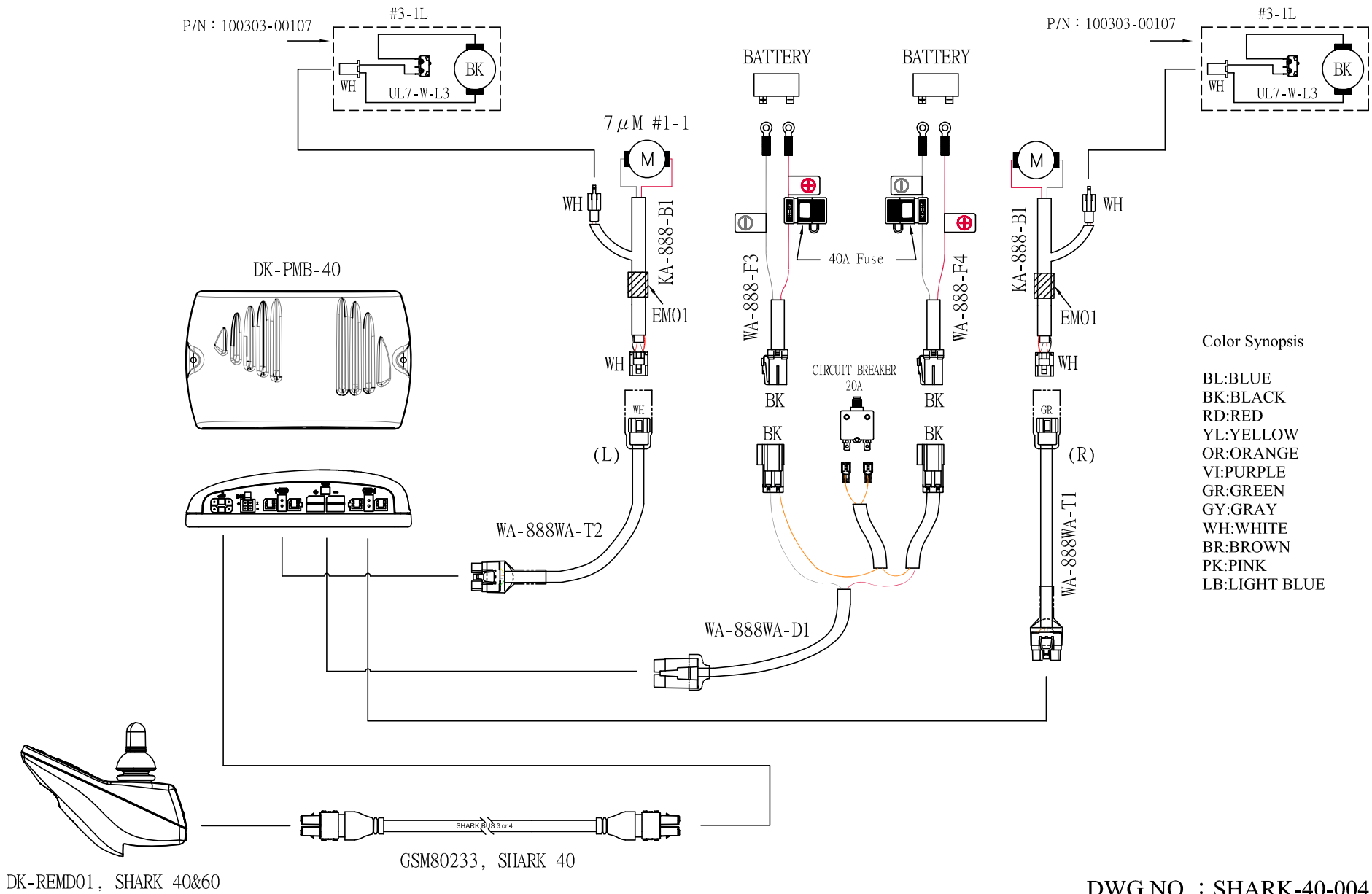
| Index NO. | Part NO. | Qty. | Description | Specification | Remark |
|-----------|-----------------|--------|--------------------------------|---------------------------------------|--------|
| 7-A | 1331-00216-0322 | REF(1) | Chassis Cover Assembly | w/ Decal, 888WNLS, Burgundy Red | |
| 7-1 | 1331-00113-0022 | REF(1) | Chassis Cover Assembly | 888WNLS,Burgundy Red | |
| ----- | 301116-01 | 1 | MIT Sticker | N16-1 | |
| ----- | 301153-23 | 1 | Battery Wiring Diagram Sticker | N53-23, 20A Circuit Breaker, 40A Fuse | |
| ----- | 301166-02 | 1 | CE Mark Label | N66-2, White Sign | |
| ----- | 301174-45-A2 | 1 | Warning Sticker | N74-45-A2 | |
| ----- | 301174-69-A2 | 1 | Warning Sticker | N74-69-A2 | |
| ----- | 301180-28 | 2 | DECAL | N80-28 SHOPRIDER | |
| ----- | 301213-44 | 1 | Model Decal, Pirouette | T13-44, CA08-888WNLS | |
| ----- | 203103-80100 | REF(1) | Velcro | 25W*25M,Loop | |
| | | | -----*----- | | |
| 7-2 | 203510-00102 | 1 | Lid for Battery Pack | 888WNLS, 21Ah | |
| | | | -----*----- | | |
| | | | | | |
| | | | | | |
| | | | | | |
| 7-A | 1331-00216-034A | REF(1) | Chassis Cover Assembly | w/ Decal, 888WNLS, Blue | |
| 7-1 | 1331-00113-004A | REF(1) | Chassis Cover Assembly | 888WNLS, BLUE | |
| | | | | | |
| | | | | | |
| | | | | | |
| | | | | | |
| | | | | | |
| | | | | | |





| Index NO. | Part NO. | Qty. | Description | Specification | Remark |
|-----------|-----------------|--------|---|------------------------------------|--------|
| 9 | ----- | | Control and battery wiring illustration | | |
| 9-1 | ----- | REF(1) | Joystick Controller | | |
| 9-2 | ----- | REF(1) | Control Extension Cable | | |
| | | | -----*----- | | |
| 9-3 | ----- | REF(1) | Main Controller / Power Module | | |
| | | | -----*----- | | |
| 9-4 | ----- | REF(1) | Drive-Train Assembly | | |
| 9-5 | ----- | REF(1) | Drive-Train Assembly | | |
| | | | -----*----- | | |
| 9-6 | ----- | REF(1) | Power Cable for SHARK 40&60 | | |
| 9-7 | ----- | REF(1) | Motor/Brake Cable, Right | | |
| 9-8 | ----- | REF(1) | Motor/Brake Cable, Left | | |
| | | | -----*----- | | |
| 9-9 | ----- | REF(1) | Circuit Breaker | | |
| | | | -----*----- | | |
| 9-10 | 5005-04015-711 | 2 | Philip Cap Screw | M4*P0.7*15L,Black Galvanized,Nyloc | |
| | | | -----*----- | | |
| ----- | 109201-88128-A3 | 1 | Off-board Charger w/ Manual | PF 2405L 24V/5A, A3 | |
| ----- | 209201-88104 | 1 | Power cord | North America,Asia,4ft | |
| | | | -----*----- | | |
| ----- | 301123-52 | 1 | Warning Sticker | N23-52 | |
| ----- | 301180-96 | 1 | Decal | N80-96, 90mm*19mm, SHOPRIDER | |
| | | | | | |
| | | | | | |

Wiring Diagram for 888WNLS (SHARK 40)



DWG NO. : SHARK-40-004
 EDITION : A0

All Stickers and Decals shown as below and used on 888WNLS



301116-01



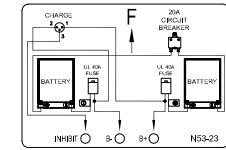
301123-21-A2



301123-52



301130-03



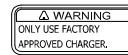
301153-23



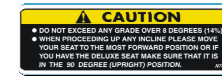
301166-02



301179-04



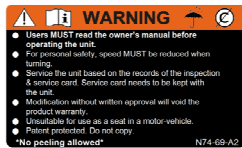
301174-16



301174-31



301174-45-A2



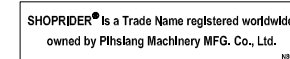
301174-69-A2



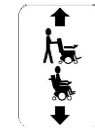
301174-74



301180-28



301180-96



301187-20



301213-44