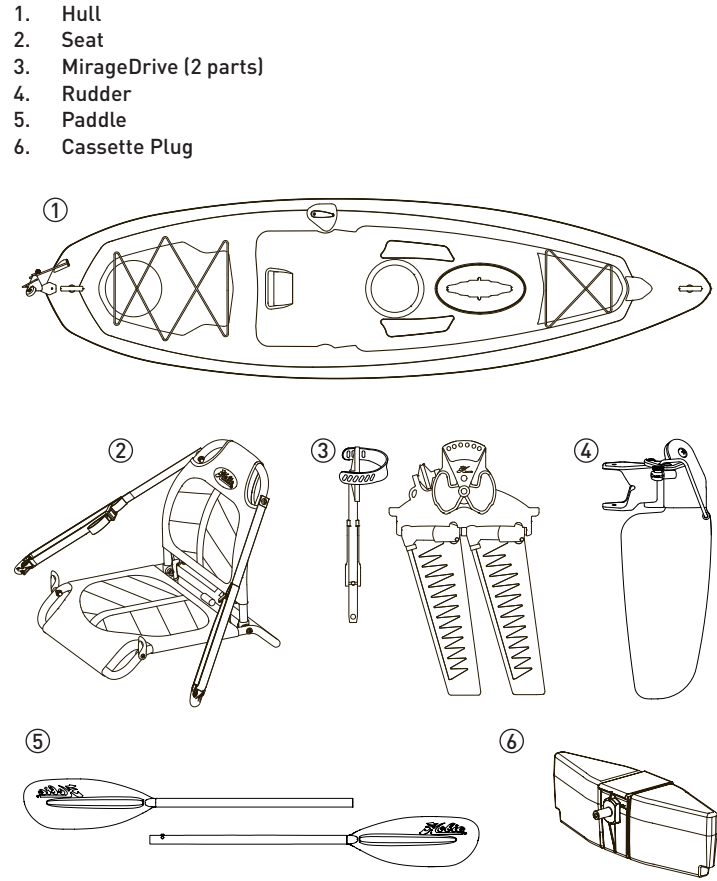
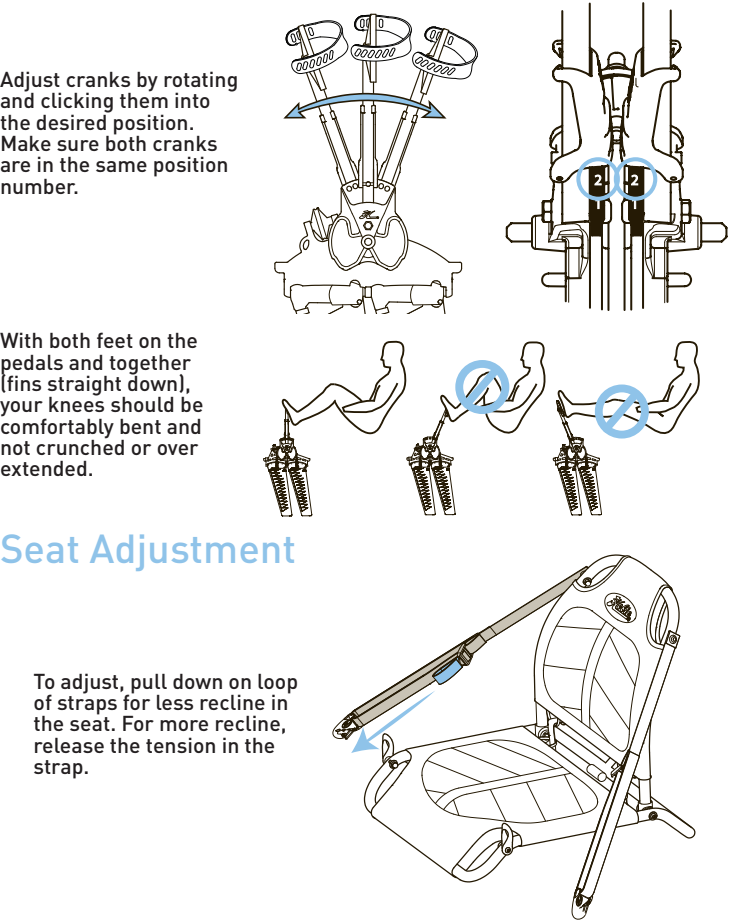


What Comes With Your Kayak?

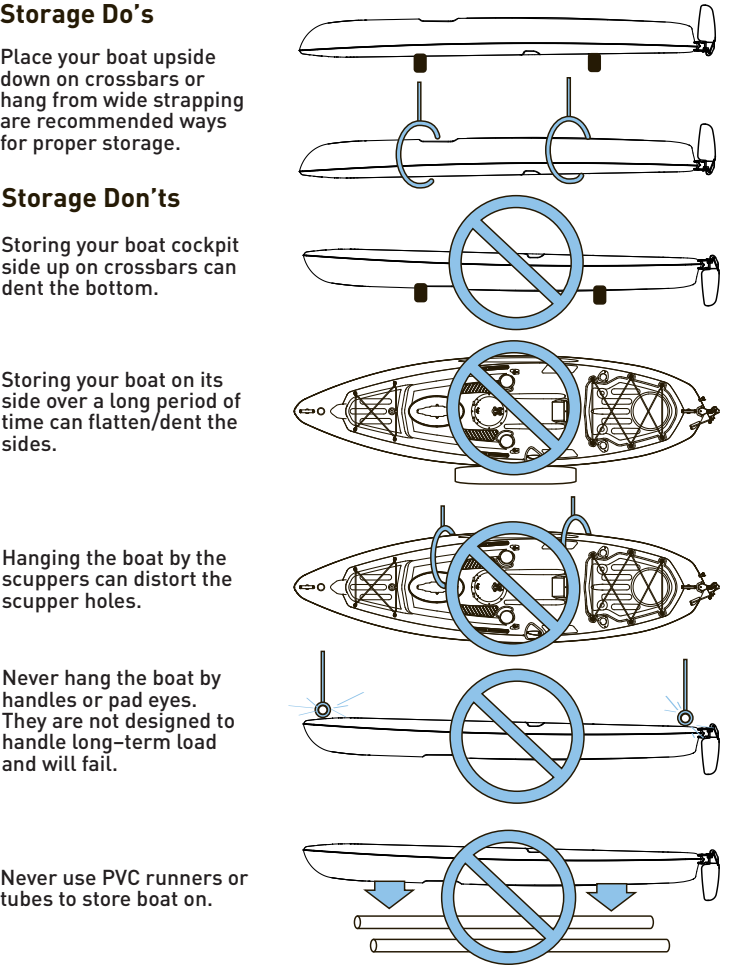


Pedal Adjustment

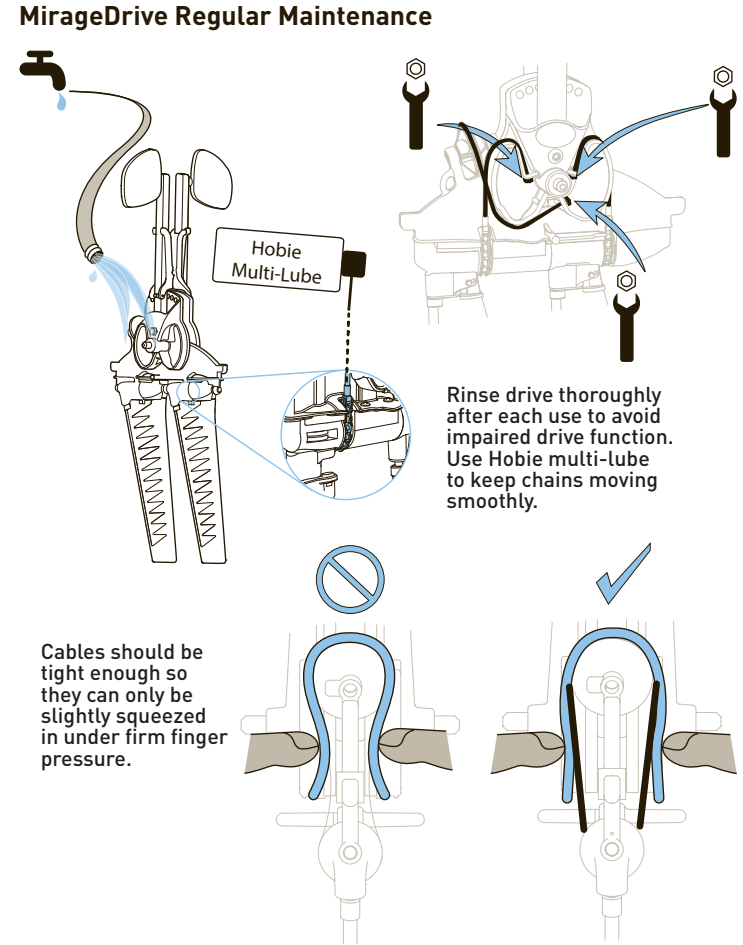


Seat Adjustment

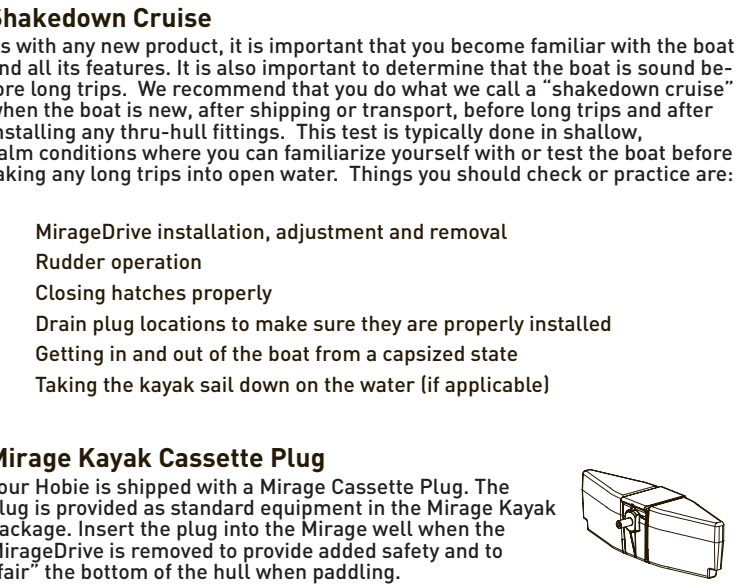
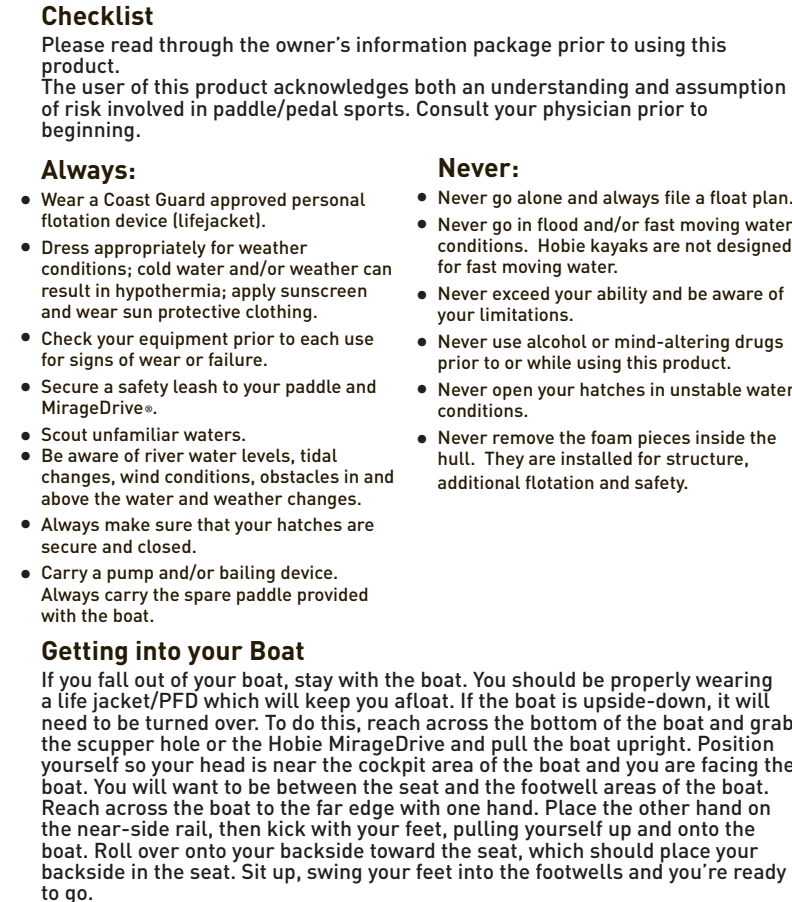
Storage and Transport



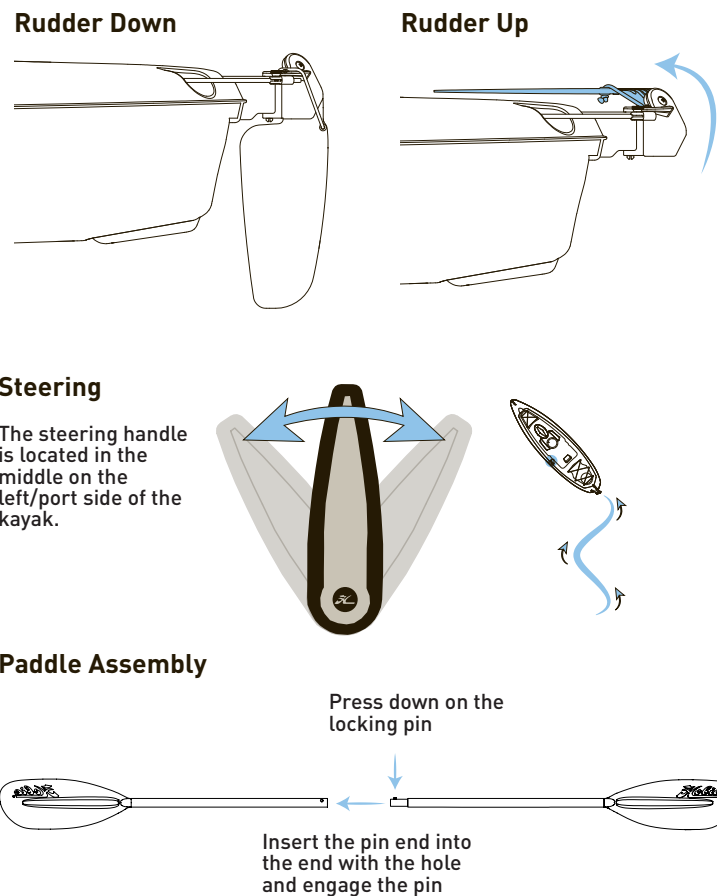
Maintenance and Care



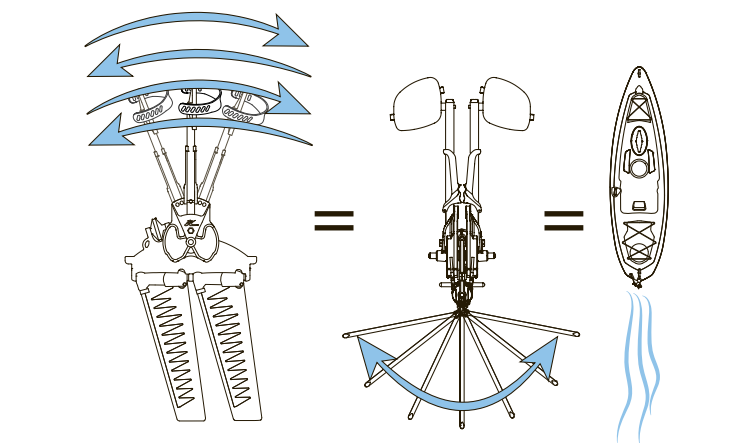
Safety



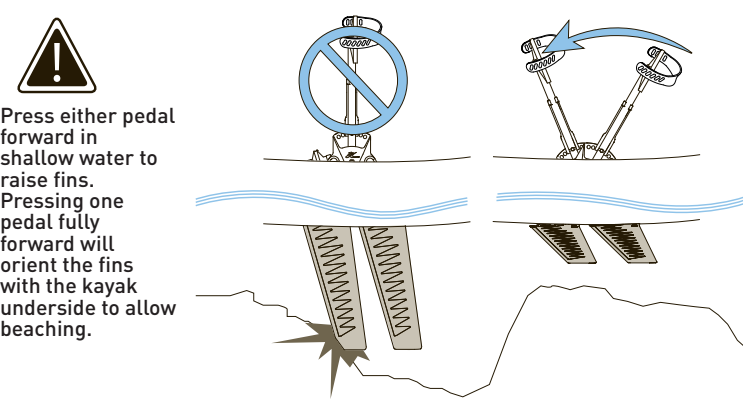
On the Water



MirageDrive Operation



Shallow Water and Beaching

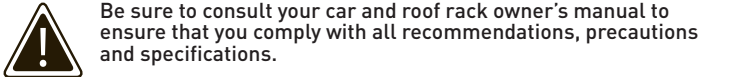


Additional Storage Key Points

- Always remove all water from boat
- Don't leave tie-down straps tight over a long period of time
- Storing in non-recommended configurations can result in hull damage and can void your warranty

Roof Topping

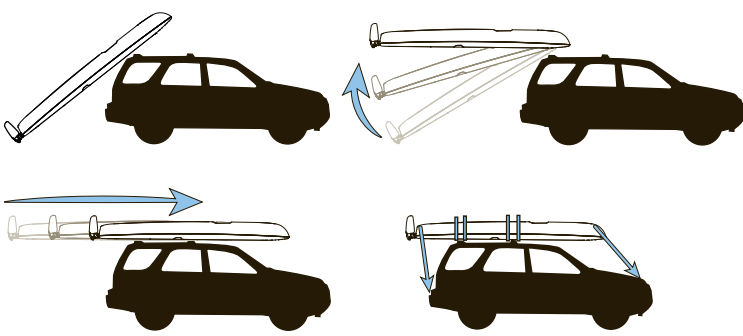
The best way to transport your boat is to purchase a trailer or roof rack from your dealer. Using proper cradles that support the hull, the boat can be transported right side up. Straps can then be laid across the boat and tied to the rack bars. Straps should be tight, but not so tight that they distort the shape of the boat. Avoid using ratchet straps to prevent overtightening.



Be sure to consult your car and roof rack owner's manual to ensure that you comply with all recommendations, precautions and specifications.

Running a line or strap from the bow and stern of the boat to each bumper is required. If your bumpers do not have a gap to pass a rope around, look underneath. There should be a loop of metal, which is used by car transports such as tow trucks.

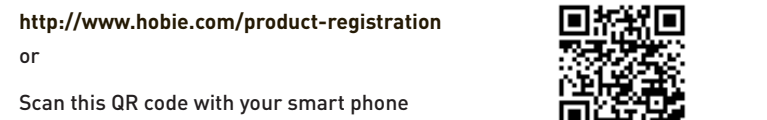
Many people like to use the scupper holes to tie the boat to the car. This helps prevent the boat from sliding back and forth or the tie-down rope from slipping off the boat. (This is an acceptable method for tying the boat down for transport.)



Warranty

It is very important that you complete and send us your Warranty Registration Card as soon as possible.

This information enables Hobie Cat Company to contact you should there be important product information that needs to be shared with you in a timely manner. Please complete the Warranty Registration Card in your Owner's Packet, or take advantage of our online option at:



If you have a question or issue with your Hobie product, please see your Authorized Hobie Kayak Dealer. They will assess the problem, assist with a repair and file a warranty claim with Hobie Cat Company, if needed. All warranty claims must go through your Authorized Hobie Kayak Dealer. The Warranty Registration Card and Warranty Policies are included with each model in the Owner's Packet. Type in the address below to go to our dealer finder webpage.

All specs, colors, graphics and features are subject to change without notice. Please refer to the website for complete details.

<http://www.hobie.com/dealers>



Hobie Cat Company
Holding Company
Oceanside, California, USA
1-800-HOBIE-49

Hobie Cat Australasia
Subsidiary
Huskisson, New South Wales, Australia
1-800-4-HOBIE

Hobie Cat Europe
Subsidiary
Toulon, France
+33 (0) 494 08 78 78

Hobie Kayak Europe
Independent Distributor
Stellendam, The Netherlands
+31 (0) 187 499 440

Hobie Cat Brasil
Independent Distributor
Porto Belo, Santa Catarina, Brazil
+55 (21) 3942 6815

[hobie.com](http://www.hobie.com)

PN 77800080
REV 190306



Hobie® Mirage®
Passport Manual



PASSPORT ASSEMBLY INSTRUCTION MAP

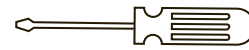
Follow these steps to complete the basic set up of your new Hobie Mirage Passport!

Make sure to watch this **Quickstart Video** before using your Hobie product.

www.hobie.com/quickstart/passport10.5

TOOLS NEEDED:

phillips head screw driver

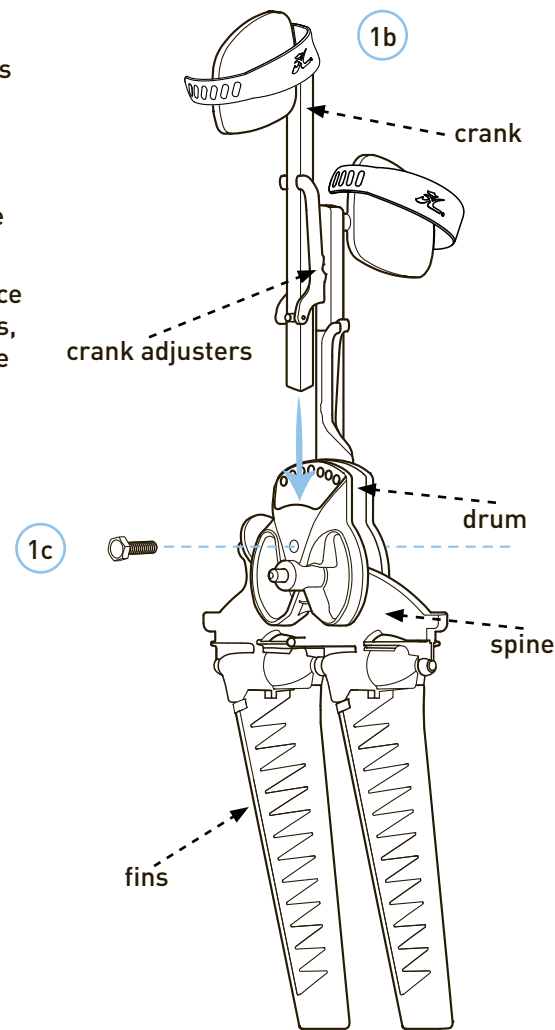
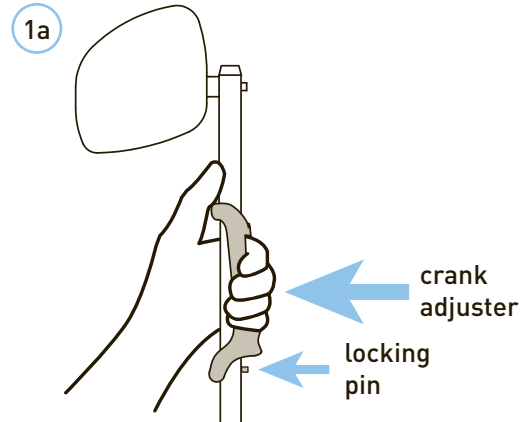


9/16" wrench



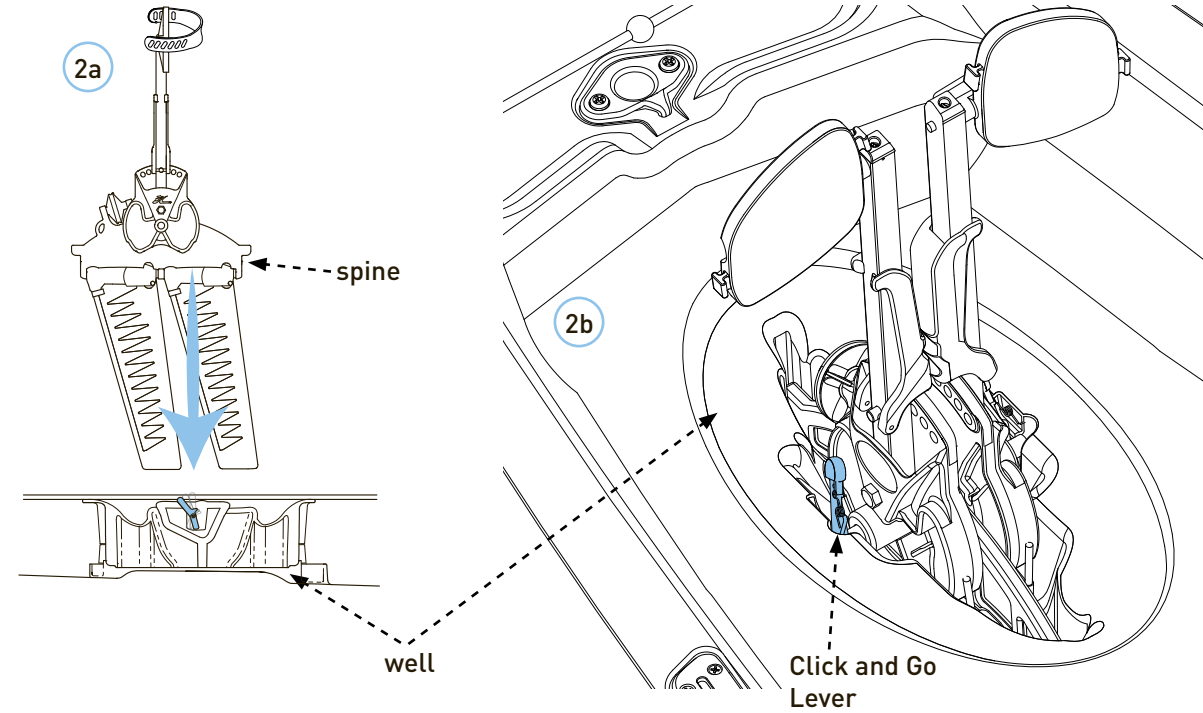
1 Drive Assembly

- Squeeze the crank adjusters to move the locking pin out of the way.
- Insert the cranks into the drum while still squeezing the adjusters.
- Once both cranks are in place and aligned with the bolt holes, fasten them to each side of the drum with the hex head bolts and a 9/16" wrench.



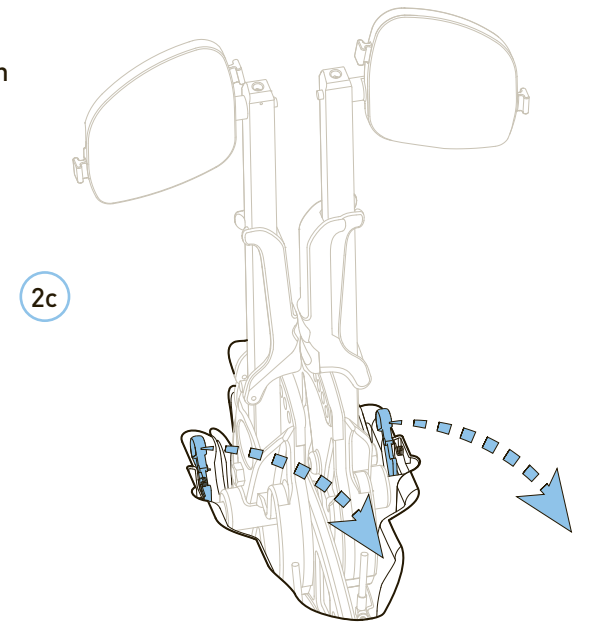
2 Drive Installation

- Lower drive straight down into well, making sure the spine is level. With a swift push downward, the drive will lock into the well automatically.
- Double check the Click and Go levers are pushed toward the bow and in the locked position before pedaling.



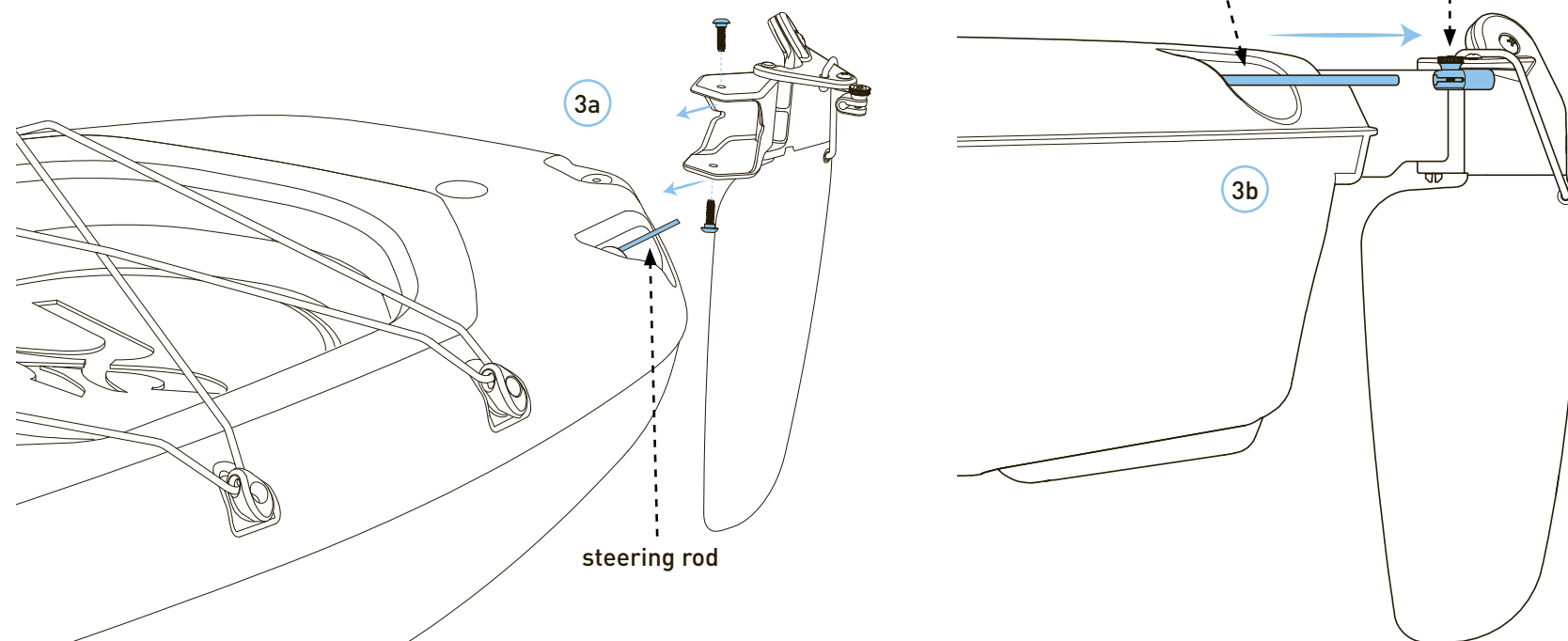
Drive Release

- To release the drive, pull each Click and Go lever towards the user and pull the drive straight up.



3 Rudder Installation

- Fasten the rudder to the inserts in the recesses at the back end of the kayak. Insert the steering rod into the rudder pivot and secure by tightening the adjustment knob.
- To adjust, center the steering handle and tighten the knob over the rod, by turning clockwise.



4 Seat Installation

- Place the seat in the kayak so the bottom of the seat frame rests in the channel at the rear of the cockpit and atop the raised seat platforms at the front. Lock the seat into place by turning the knob lock over the seat frame.
- Extend the seat straps forward and clip them to the pad eyes fixed to the hull.

