



Lacoste®

2019 COLLECTION

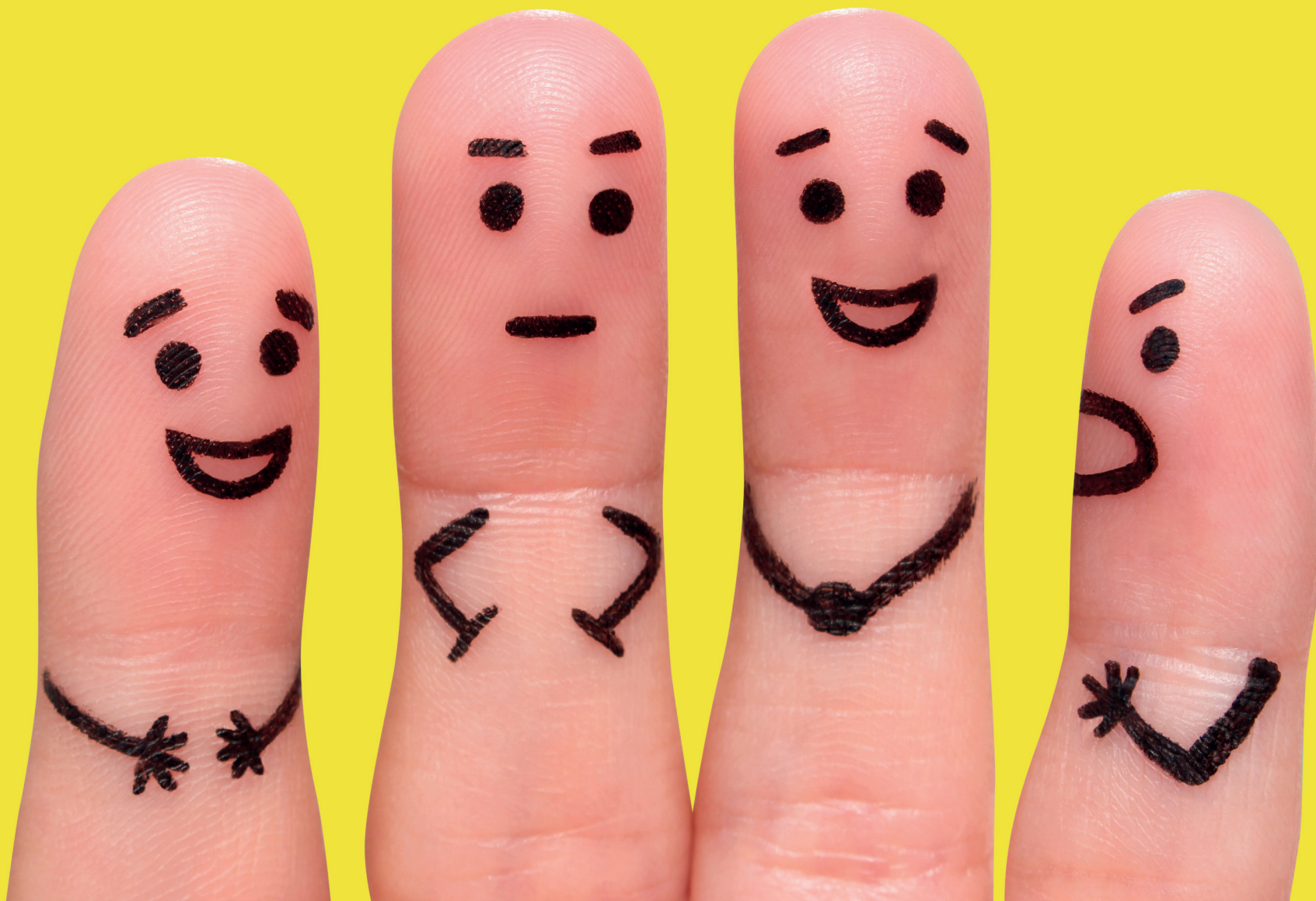




LIVE
MORE
Vespa

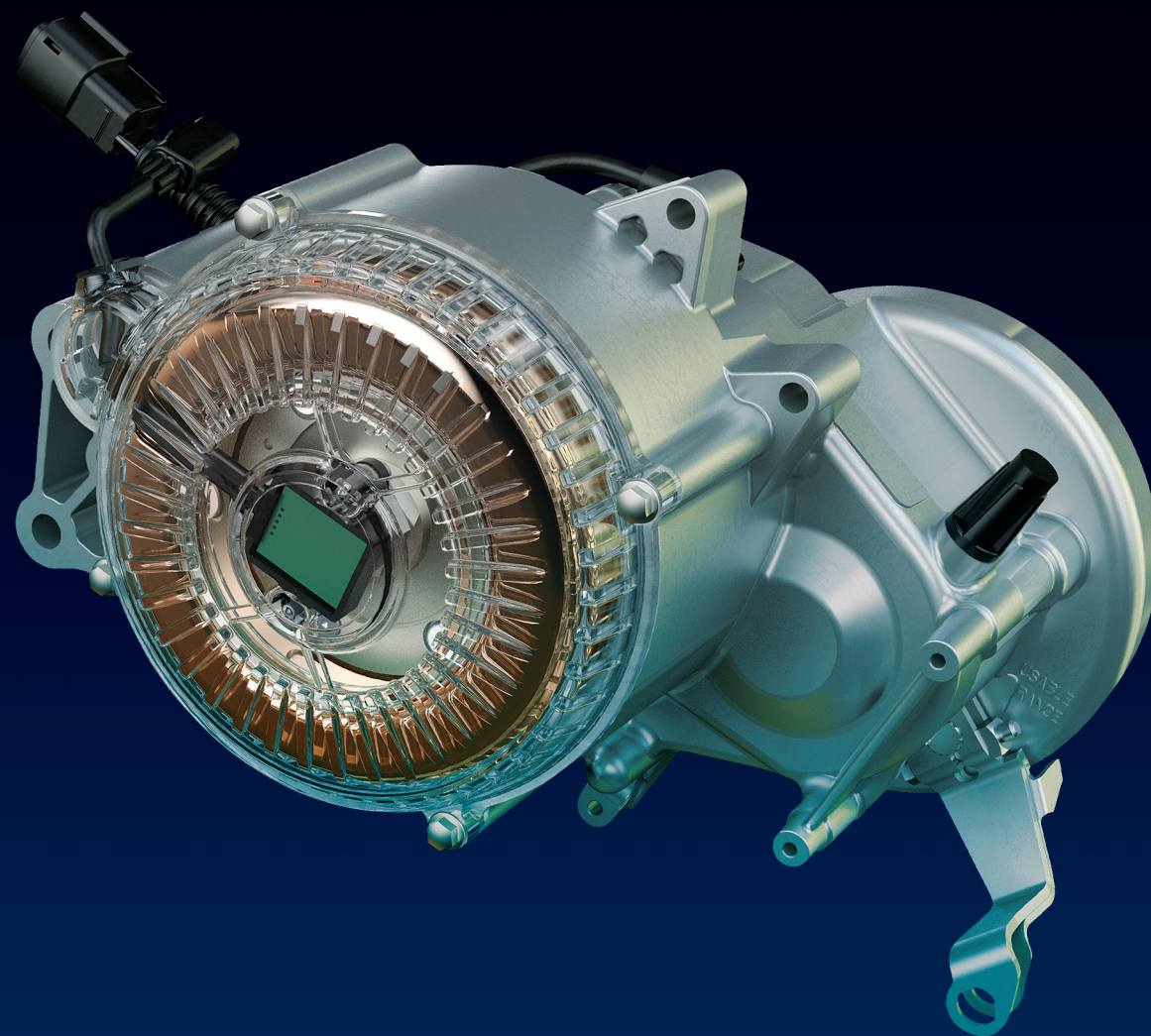
FREEDOM AND DREAMS TRAVEL FAST

For over seventy years, Vespa has continued to conquer generations, thanks to its charisma that transmits freedom and its communication style outside the box, able to forcefully occupy the collective imagination. In its intense history, Vespa has been the protagonist of cultural and social revolutions, musical and lifestyle movements, films, works of art and songs. It has survived changes in trends and styles intact and today, in the era of digital and social communication, it is present without barriers and with immediacy worldwide, an icon of a unique design and of values of environmental sensitivity and independence.



HUNDREDS OF EMOTIONS

The first truly global mobility brand, Vespa has become a link between generations, interacting with very distant social environments, creating different cultural phenomena, peculiar to the realities in which it has become a protagonist and a distinctive characteristic. It has driven lifestyle, musical and youth revolutions. It has generated intense moments of aggregation such as the Vespa World Days. And today it is one of the most widespread and well-known Italian products anywhere in the world.



VESPA ELETTRICA

ELECTRIC MOBILITY WILL NEVER BE THE SAME. INTRODUCING VESPA ELETTRICA, STYLISHLY INTERPRETING THE DESIRE FOR A NEW RELATIONSHIP BETWEEN VEHICLE, ENVIRONMENT AND TECHNOLOGY. PICK-UP IS EXCITING, THE RIDE EASY AND ENJOYABLE. UP TO 100 KM OF AUTONOMY THANKS TO THE LITHIUM-ION BATTERY COMPLETE WITH RECHARGE SYSTEM DURING DECELERATION PHASES. THE BEATING HEART OF VESPA ELETTRICA IS A SILENT, TECHNOLOGICALLY ADVANCED POWER UNIT.

A close-up, artistic photograph of a hand holding a small, glowing green flower against a dark blue background. The hand is positioned on the left side of the frame, with the fingers gently cradling the flower. The flower has a bright, almost white-green glow, contrasting sharply with the deep blue background. The lighting is soft and focused on the flower, creating a sense of intimacy and connection with nature.

ELETTRICA

BE AT ONE WITH NATURE

AS WELL AS ELIMINATING HARMFUL EMISSIONS, VESPA ELETTRICA IS A TOTALLY SILENT VEHICLE, BOTH IN ITS ENERGY SAVING ECO MODE AND IN POWER MODE, WHICH USES THE ENGINE AT MAXIMUM POWER. SMART CHOICE BY WHICH TO REDUCE BACKGROUND NOISE IN THE CITY AND MAKE IT MORE LIVEABLE.



EASY TO USE

USING VESPA ELETTRICA IS SIMPLE. THE UNDERSEAT COMPARTMENT, AS WELL AS HOUSING THE DEDICATED HELMET, CONTAINS THE BATTERY RECHARGE CABLE, FOR CONNECTION TO A WALL-MOUNTED ELECTRICAL SOCKET OR ONE OF THE PUBLIC CHARGING STATIONS AVAILABLE IN CITIES. THE BATTERY FULLY RECHARGES IN 4 HOURS* AND, LIKE THE ENGINE, NEEDS NO MAINTENANCE.

ELETTRICA



*MINIMUM RECHARGE TIME WITH 220 V POWER



ALWAYS CONNECTED

THE 4.3 INCH COLOUR TFT DIGITAL DASHBOARD PROVIDES RIDING PARAMETERS AND OFFERS JOURNEY STATISTICS DESIGNED TO HELP IMPROVE RIDING STYLE. THE VESPA MIA SYSTEM, DEVELOPED BY PIAGGIO GROUP, ALLOWS FOR FULL CONNECTIVITY BETWEEN VEHICLE AND SMARTPHONE. BLUETOOTH COMMUNICATION AND A DEDICATED APP TRANSFORM THE DISPLAY INTO AN EXTENSION OF THE SMARTPHONE, WHICH CAN BE SAFELY USED WITHOUT REMOVING HANDS FROM THE HANDLEBAR: THE RIDER CAN IN FACT ANSWER CALLS, VIEW MESSAGE NOTIFICATIONS, ACTIVATE VOICE COMMANDS AND MANAGE MUSIC. THANKS TO THE APP, THE PARAMETERS AND LAST POSITION OF THE VEHICLE ARE SAVED.





VESPA GTS 300 hpe

Passionate travellers need stability in order to reach their destinations.

Vespa GTS combines the urban spirit of a large body vehicle, comfortable, protective and technological, with a passion for touring. The Vespa flagship introduces a front section restyling, with an updated shield and horn cover. The front and rear lights adopt full LED technology, for better visibility in all riding conditions. The model stands out for its new 300 hpe engine (High Performance Engine), the most powerful ever mounted on a Vespa, the latest evolution of the 300 cc single cylinder, 4 stroke liquid-cooled engine with electronic injection that offers heightened performance and reduced fuel consumption. The standard equipment is rounded out with ASR electronic traction control. Accessible and a pleasure to ride thanks to its ergonomic saddle with anti-slip fabric, Vespa GTS also features a remote control to open the saddle, a Bike Finder device to locate the vehicle when parked, and a USB port in the drawer on the back of the shield.





GTS TOURING 300 hpe

A special Vespa trim that pays tribute to the tradition of travel, its instinct for freedom, exploration and encounter. The Touring equipment is in harmony with the design of the vehicle, the evocative windshield improving protection levels while retaining elegance thanks to its small size, and the rear luggage rack and spacious storage compartment increasing load capacity to help ensure a memorable holiday, whether travelling alone or as a couple. Available with new Verde Bosco color scheme, Vespa GTS Touring also stands out for its saddle with new and elegant upholstery and dedicated plate on the leg shield. Featuring the best technological safety equipment, new full LED lighting and Euro 4 engines, Vespa GTS Touring runs with sprint and reduced consumption both urban and out-of-town routes.





VESPA GTS SUPER 300 hpe

The successor to sports models with a large steel body, Vespa GTS Super gives Vespa style a sports twist. Gutsy and refined, the front section is updated with a redesigned shield, the center of which incorporates the unmistakable horn cover, extended and enhanced with three decorations. The vehicle also features black rims with a diamond finish and a double upholstered saddle with edging or Sport single-seater saddle (accessory). The new front and rear lighting with full LED technology creates a high-impact look as well as increasing safety. Also new is the 300 hpe engine, the most high performing of the entire Vespa range, is combined with a front and rear disk braking system with ABS and ASR for absolute riding safety for the ultimate riding experience.

*only available in USA



VESPA GTS SUPERSPORT 300 hpe

That Vespa sports essence is strong and charismatic, with bold style choices that are hard to miss. Wheels are full black and the two matte colors, Grigio Titanio and brand-new Blu Vivace, are enhanced with dedicated new graphics. Attention to detail is also clear in the saddle, which features double upholstery and edging, and in the graphics of the combination analog/digital instrumentation.

*Green only available in USA



VESPA GTS SUPERTECH 300 hpe

A new entry in the range, Vespa GTS SuperTech is born to showcase that sports nature and passion for technology. Identifiable thanks to its dedicated Grigio Materia color schemes enhanced with exclusive graphics and saddle upholsteries, Vespa GTS SuperTech offers an even more enjoyable and unique riding experience. It is the first large body Vespa to adopt totally digital instruments thanks to its 4.3" full color TFT display. As well as providing riding parameters and general journey stats, the display also serves as an interface for the VESPA MIA connectivity system, which allows for complete communication between rider and vehicle. The Bluetooth connection and dedicated Vespa app - available for download in the App Store or Google Play - transform the display into an extension of the smartphone and allow the rider to answer calls, view message notifications, activate voice commands and select music playlists. The display also serves as a navigation system, accompanying the rider, through pictogram indications, along the route pre-set on the Vespa App.

* green HPE only available in USA





VESPA SEI GIORNI 300

The exclusive Vespa Sei Giorni, a special limited edition, is the heir of the original Vespa Sport “Sei Giorni” of the same name, a model that became a legend, specifically produced for the “Varese International Six Day” regularity race in 1951. The overall aesthetics follow the style of the most sporting Vespa with the black number plate holder and are enhanced by all-black details - such as the wheel rims and exhaust silencer - and by aggressive red details. Other distinctive features are the “low headlight”, the smoked windshield and the single-seater seat (also approved for a passenger). The USB port, located inside the glove compartment behind the shield, is standard while the front indicator lights contain a series of LEDs that act as daytime running lights. On the safety front, the ABS anti-lock braking system is standard.

*only available in USA



VESPA PRIMAVERA 50 / 150

Fifty years after its launch, Vespa Primavera still boasts that youthful appearance, in sync with the spirit of freedom, dynamism and attention to environmental issues. Uninterrupted success and now a restyling that makes it even more agile and ultra-technological. The 12" wheels with a five-spoke design ensure total stability and safety on all road surfaces. The i-get 4-stroke single-cylinder engine allows for smooth, noiseless riding and reduces consumption while offering top of the range performance. Front and back LED lighting, Bike Finder, and remote saddle opening as standard (with the 150) round out its equipment.





VESPA PRIMAVERA TOURING 50 / 150

Dedicated to those who love to travel and appreciate technological innovation as a way of enriching the riding experience. Vespa Primavera Touring is in keeping with the Vespa tradition for travel, incorporating all the improvements of the Primavera range. The i-get 4-stroke single-cylinder engine ensures top of the range performance and reduced consumption. The large 12th wheels guarantee stability and riding comfort on any surface, while front and rear chrome luggage racks add a retro touch to the vehicle's load capacity. The ergonomic saddle and elegant top fairing are both practical and stylish.

*150 cc only available in USA

*Red color only available in USA

*Red color only available in 150cc



VESPA PRIMAVERA S 150

Zippy and sporty, the brand-new Vespa Primavera S is as dynamic as it is gutsy. It adopts the Primavera range of engines but with a marked technological twist. For the first time in Vespa history, with the 150 engines, it comes complete with a fully digital and color dashboard with 4.3" full color TFT display that also serves as the screen for the VESPA MIA connectivity system. The Bluetooth connection and dedicated Vespa app - available for download in the App Store or Google Play - transform the display into an extension of the smartphone and allow the rider to answer calls, view message notifications, activate voice commands and select music playlists.

*only available in USA



VESPA SPRINT 50 / 150

Heir to Vespas of the Sixties, small, nippy and cutting-edge, it boasts the same spark of energy and youthful appeal. Its technical and technological reliability make for a pleasurable, carefree ride. Vespa Sprint is easy to handle and stable thanks to its small, protective body and large 12th wheels, while its bold style is enhanced with a distinctive rectangular headlight. The i-get 4-stroke, 3-valve single-cylinder engine, the perfect balance between performance and consumption, ensures an agile ride.





VESPA SPRINT S 50 / 150

The gutsiest small body in the range pushes that Vespa sports spirit to an extreme. In keeping with digital evolution, Vespa Sprint S offers a futuristic riding experience thanks to a full color TFT multifunction display (only with the 150 cc) that provides vehicle status information. The latest-generation engine is the secret to nippy riding in traffic and comfort on long-range trips, and also ensures efficient consumption. An exclusive saddle enhances the sports look of the vehicle, with its dedicated colors and graphics. The VESPA MIA system, accessed via the 4.3" full color TFT display, allows for complete, interactive communication between rider and vehicle. Thanks to the Bluetooth connection and dedicated Vespa app, available for download in the App Store or Google Play, the display becomes an extension of the smartphone and allows the rider to answer calls, view message notifications, activate voice commands and select music playlists.



SPECIAL SERIES VESPA YACHT CLUB



VESPA PRIMAVERA
YACHT CLUB

50 / 150



VESPA GTS
YACHT CLUB

300



*Image refers to MY2019
* Only available in USA

SPECIAL SERIES VESPA NOTTE

*150cc only available in USA



VESPA SPRINT
NOTTE
50 / 150



*Image refers to MY2019



VESPA GTS SUPER
NOTTE
300





GTS
GTS Touring
GTS Super
GTS SuperSport
GTS SuperTech
300 HPE

Sei Giorni
GTS Yacht Club
GTS Super Notte
300 HPE

Primavera
Primavera Touring
Primavera S 150
Primavera Yacht Club
50

Primavera
Primavera Touring
Primavera S 150
150
Primavera Yacht Club
150

<i>Engine</i>	4-valve 4-stroke single cylinder, electronic injection, catalysed	4-valve 4-stroke single cylinder, electronic injection, catalysed
<i>Displacement</i>	278.3 cc	278.3 cc
<i>Bore x stroke</i>	75 mm x 63 mm	75 mm x 63 mm
<i>Max Power at the crank shaft</i>	17.5 kW 23.8 HP at 8,250 rpm	15.6 kW 21.2 HP at 7,750 rpm
<i>Max Torque</i>	19.17ft-lbs @ 5,250 rpm	16.22ft-lbs @ 5,000 rpm
<i>Consumption</i>	73.38 mpg	69.15 mpg Sei Giorni - 71.27 mpg
<i>CO₂ emissions compliance</i>	74 g/km	77 g/km
<i>Fuel system</i>	Electronic Injection	Electronic Injection
<i>Cooling</i>	Liquid	Liquid
<i>Starter</i>	Electric	Electric
<i>Gearbox</i>	Variatore automatico CVT con asservitore di coppia	CVT automatic with torque server
<i>Clutch</i>	Automatic dry centrifugal with shock absorbers	Automatic dry centrifugal with shock absorbers
<i>Load-bearing structure</i>	Sheet steel shell with welded structural reinforcements	Sheet steel shell with welded structural reinforcements
<i>Front suspension</i>	Single arm with helical spring and hydraulic shock absorber	Single arm with helical spring and hydraulic shock absorber
<i>Rear suspension</i>	Double hydraulic shock absorber with helical spring with preload adjustable in 4 positions	Double hydraulic shock absorber with helical spring with preload adjustable in 4 positions
<i>Front brake</i>	Stainless steel Ø 220 mm disc with hydraulic control	Stainless steel Ø 220 mm disc with hydraulic control
<i>Rear brake</i>	Stainless steel Ø 220 mm disc with hydraulic control	Stainless steel Ø 220 mm disc with hydraulic control
<i>ABS/ASR system</i>	ABS/ASR standard	ABS/ASR standard Sei Giorni: ABS as standard
<i>Front tire</i>	Tubeless 120/70 - 12"	Tubeless 120/70 - 12"
<i>Rear tire</i>	Tubeless 130/70 - 12"	Tubeless 130/70 - 12"
<i>Length/Width/Wheelbase</i>	6.39' / 2.47' / 4.51'	6.39' / 2.47' / 4.51'
<i>Seat Height</i>	2.59 ft	2.59 ft
<i>Fuel tank capacity</i>	2.24 gallons	2.24 gallons
<i>Emissions compliance</i>	Euro 4	Euro 4

<i>Engine</i>	3-valve 4-stroke single cylinder i-get catalysed	3-valve 4-stroke single cylinder i-get catalysed
<i>Displacement</i>	49.9 cc	155 cc
<i>Bore x stroke</i>	39 mm x 41,8 mm	58 mm x 58,6 mm
<i>Max Power at the crank shaft</i>	2.4 kW 3.2 HP at 7,500 rpm	9.5 kW -12.9 HP- at 7,750 rpm
<i>Max Torque</i>	2.21 ft-lbs @ 7,500 rpm	9.44ft-lbs @ 6,500 rpm
<i>Consumption</i>	80.91mpg	94.74mpg
<i>CO₂ emissions compliance</i>	65 g/km	65 g/km
<i>Fuel system</i>	Electronic Injection	Electronic Injection
<i>Cooling</i>	Forced air	Forced air
<i>Starter</i>	Electric	Electric
<i>Gearbox</i>	CVT automatic with torque server	CVT automatic with torque server
<i>Clutch</i>	Automatic dry centrifugal with shock absorbers	Automatic dry centrifugal with shock absorbers
<i>Load-bearing structure</i>	Sheet steel shell with welded structural reinforcements	Sheet steel shell with welded structural reinforcements
<i>Front suspension</i>	Single arm with helical spring and single hydraulic shock absorber	Single arm with helical spring and single hydraulic shock absorber
<i>Rear suspension</i>	Helical spring with single hydraulic shock absorber	Helical spring with preload adjustable (4 positions) and single hydraulic shock absorber
<i>Front brake</i>	Stainless steel Ø 200 mm disc with hydraulic control	Stainless steel Ø 200 mm disc with hydraulic control
<i>Rear brake</i>	Ø 140 mm drum with mechanical control	Ø 140 mm drum with mechanical control
<i>ABS/ASR system</i>	-	ABS at the front wheel only
<i>Front tire</i>	Tubeless 110/70 - 12"	Tubeless 110/70 - 12"
<i>Rear tire</i>	Tubeless 120/70 - 12"	Tubeless 120/70 - 12"
<i>Length/Width/Wheelbase</i>	6.13' / 2.41' / 4.36'	6.13' / 2.41' / 4.39'
<i>Seat Height</i>	2.59 ft	2.59 ft
<i>Fuel tank capacity</i>	2.11 gallons	2.11 gallons
<i>Emissions compliance</i>	Euro 4	Euro 4

The company reserves the right to make technical and aesthetic modifications at any time. Complete information regarding models and accessories is available at www.vespa.com. Ride carefully, always wearing a helmet and suitable gear. Always comply with the Highway Code and respect the environment. Read the user and maintenance manuals thoroughly. Always request original, homologated spare parts in accordance with the laws in force. Refer to Official Vespa Dealers and Authorised Retailers for a secure purchase and guaranteed customer service.

COMPANY WITH
 QUALITY SYSTEM
 CERTIFIED BY DNV
 = ISO 9001 =

COMPANY WITH
 ENVIRONMENTAL SYSTEM
 CERTIFIED BY DNV
 = ISO 14001 =

COMPANY WITH
 SAFETY SYSTEM
 CERTIFIED BY DNV
 = OHSAS 18001 =

Vespa is a registered trademark of Piaggio & C. S.p.A.



**Sprint
Sprint Notte
50**

**Sprint
Sprint Notte 150
Sprint S 150**

<i>Engine</i>	3-valve 4-stroke single cylinder i-get catalysed	3-valve 4-stroke single cylinder i-get catalysed
<i>Displacement</i>	49.9 cc	155 cc
<i>Bore x stroke</i>	39 mm x 41,8 mm	58 mm x 58,6 mm
<i>Max Power at the crank shaft</i>	2.4 kW- 3.2 HP-at 7,500 rpm	9.5 kW -12.9 HP- at 7,750 rpm
<i>Max Torque</i>	2.21 ft-lbs @ 7,500 rpm	9.44ft-lbs @ 6,500 rpm
<i>Consumption</i>	80.91 mpg	94.74 mpg
<i>CO₂ emissions compliance</i>	65 g/km	61 g/km (65 g/km)
<i>Fuel system</i>	Electronic Injection	Electronic Injection
<i>Cooling</i>	Forced air	Forced air
<i>Starter</i>	Electric	Electric
<i>Gearbox</i>	CVT automatic with torque server	CVT automatic with torque server
<i>Clutch</i>	Automatic dry centrifugal with shock absorbers	Automatic dry centrifugal with shock absorbers
<i>Load-bearing structure</i>	Sheet steel shell with welded structural reinforcements	Sheet steel shell with welded structural reinforcements
<i>Front suspension</i>	Single arm with helical spring and single hydraulic shock absorber	Single arm with helical spring and single hydraulic shock absorber
<i>Rear suspension</i>	Helical spring with single hydraulic shock absorber	Helical spring with adjustable preload (4 positions) and single hydraulic shock absorber
<i>Front brake</i>	Stainless steel Ø 200 mm disc with hydraulic control	Stainless steel Ø 200 mm disc with hydraulic control
<i>Rear brake</i>	Ø 140 mm drum with mechanical control	Ø 140 mm drum with mechanical control
<i>ABS/ASR system</i>	-	ABS at the front wheel only
<i>Front tire</i>	Tubeless 110/70 - 12"	Tubeless 110/70 - 12"
<i>Rear tire</i>	Tubeless 120/70 - 12"	Tubeless 120/70 - 12"
<i>Length/Width/Wheelbase</i>	6.13' / 2.41' / 4.36'	6.13' / 2.41' / 4.39'
<i>Seat Height</i>	2.59 ft	2.59 ft
<i>Fuel tank capacity</i>	2.11 gallons	2.11 gallons
<i>Emissions compliance</i>	Euro 4	Euro 4



Vespa Elettrica 30 mph

<i>Power unit</i>	Piaggio Group
<i>Continuous power</i>	3.5 kW
<i>Maximum power</i>	4 kW
<i>Motor torque</i>	200 Nm (at the wheel)
<i>Battery voltage</i>	48 V
<i>Battery capacity</i>	86 Ah
<i>Battery energy</i>	4.2 kWh
<i>Cell</i>	LG Chem
<i>Recharge time</i>	4 h*
<i>Battery life</i>	1,000 cycles (residual capacity 80%)
<i>Maximum speed</i>	30 mph
<i>Battery weight</i>	55 lbs
<i>Energy recovery</i>	Yes
<i>Front tyre</i>	110/70 - 12"
<i>Rear tyre</i>	120/70 - 11"
<i>Front brake</i>	Ø 200 mm disc
<i>Rear brake</i>	Ø 140 mm drum
<i>Braking system</i>	-
<i>Wheelbase</i>	4.42'
<i>Lenght</i>	6.13'
<i>Width</i>	2.41'
<i>Height</i>	3.77'
<i>Saddle height</i>	2.59'
<i>Weight (with battery)</i>	286.6 lbs

The company reserves the right to make technical and aesthetic modifications at any time. Complete information regarding models and accessories is available at www.vespa.com. Ride carefully, always wearing a helmet and suitable gear. Always comply with the Highway Code and respect the environment. Read the user and maintenance manuals thoroughly. Always request original, homologated spare parts in accordance with the laws in force. Refer to Official Vespa Dealers and Authorised Retailers for a secure purchase and guaranteed customer service.

COMPANY WITH
QUALITY SYSTEM
CERTIFIED BY DNV
= ISO 9001 =

COMPANY WITH
ENVIRONMENTAL SYSTEM
CERTIFIED BY DNV
= ISO 14001 =

COMPANY WITH
SAFETY SYSTEM
CERTIFIED BY DNV
= OHSAS 18001 =

Vespa is a registered trademark of Piaggio & C. S.p.A.



VESPA.COM



FOR CHILDREN

A BETTER LIFE FOR THE
CHILDREN OF THE WORLD