

POP DYNAMICS



Scan here for Ship Dates

INSTANT CLASSICS

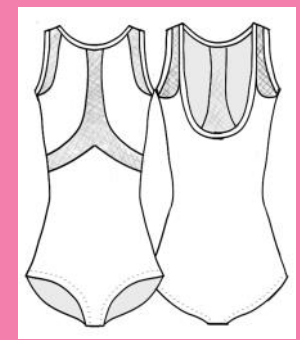
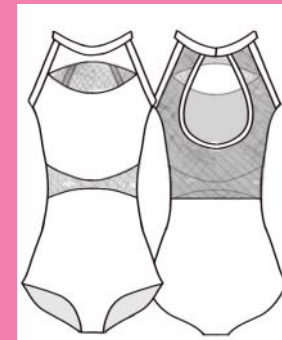


Chloe Leotard 73350:



Morgan Leotard 73351:

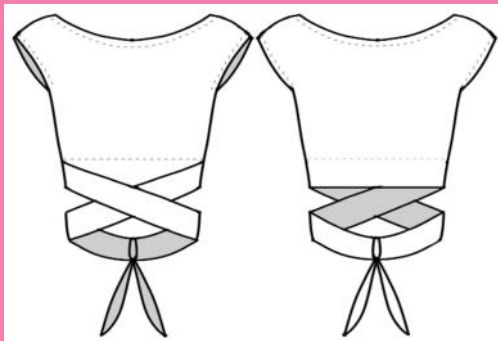
Abigail 73352:



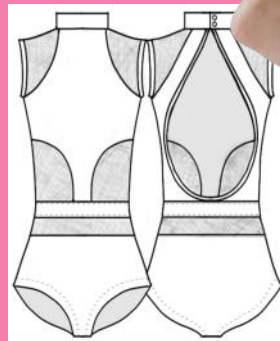
NOT SO BASIC BASICS



Maguire 74128: Cap sleeve tie back crop top



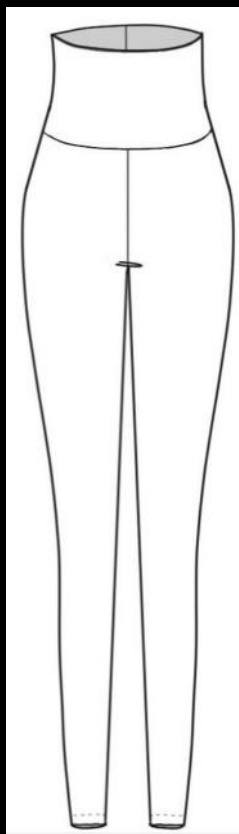
Heidi 74127:



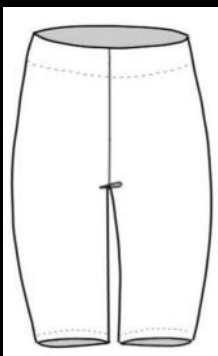
Leela 73353:

DANCE EASY COLLECTION

9 MUST HAVE NOT SO BASIC BASICS. ENDLESS MIX AND MATCH LOOKS FOR COSTUME, CLASS OR CONVENTION



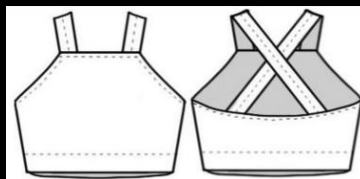
D. 31123: High waisted legging



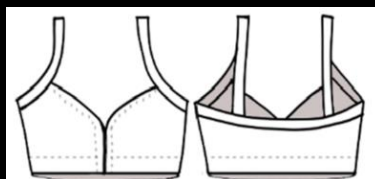
E. 37122: Medium rise bike short, with 2" elastic waistband, and 9.5" inseam



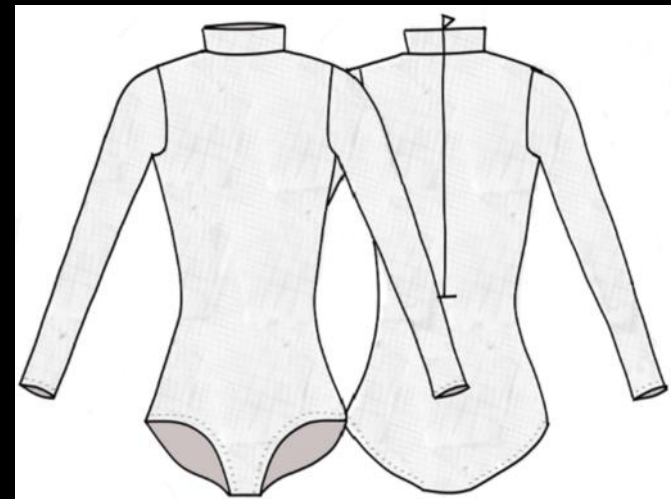
C. 05109: Regular/ low rise brief, with 1" elastic Waistband



F. 74124: High neck cross back bra

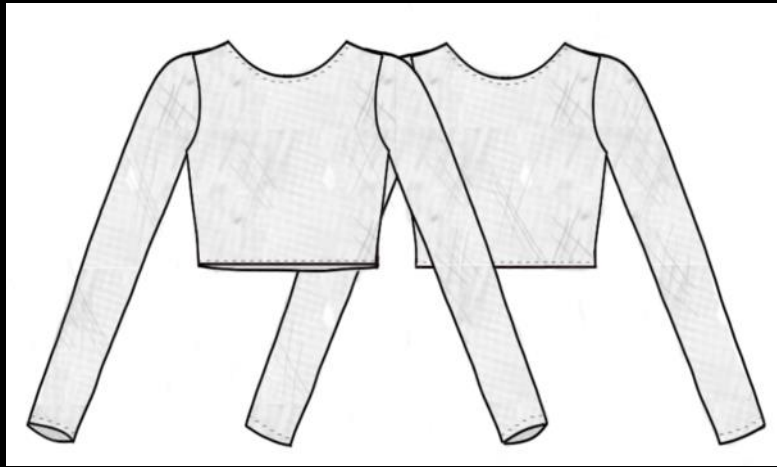


B. 04114: Plunging bra

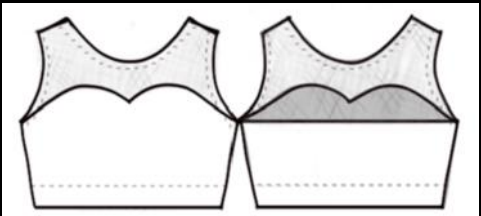


A. 83126: Mock neck, long sleeve, zip back leo
(Available in Mesh or Wavy Lace)



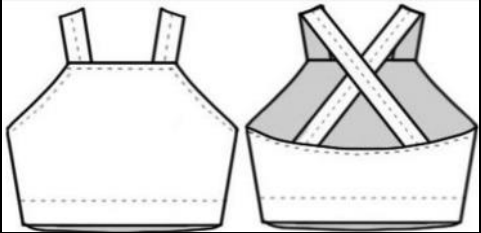


C. 84337: Wavy or mesh long sleeve crop



A. 84336: Wavy or mesh sweetheart

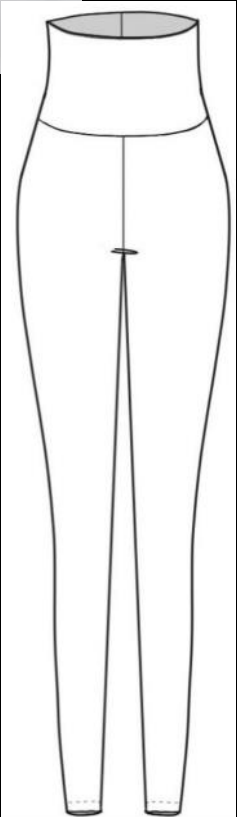
long crop



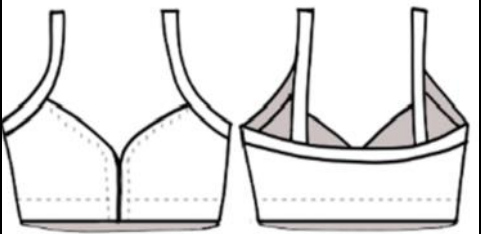
F. 74124: High neck cross back top



B. 31602: Wavy or mesh legging with attached brief



E. 31123: High waisted leggings



D. 04114: Plunging bra



Available in Mesh or Flow



31603: Gaucho pant Shown in: Steel Mesh and Metal Flow



39113: Tank tea length dress with high side slit .
Shown in: Turquoise mesh and Teal Flow



31604: Ankle length gaucho pant.
Shown in Burgundy Flow.

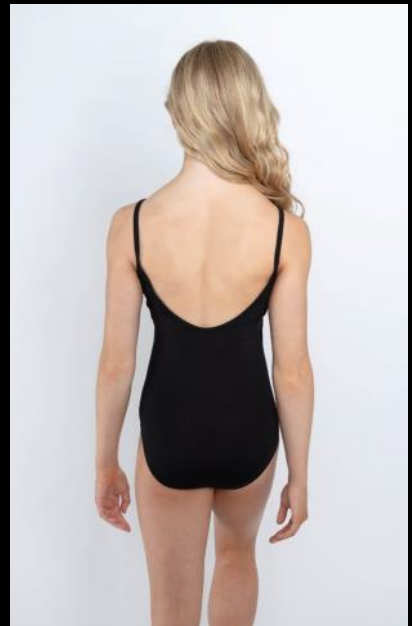
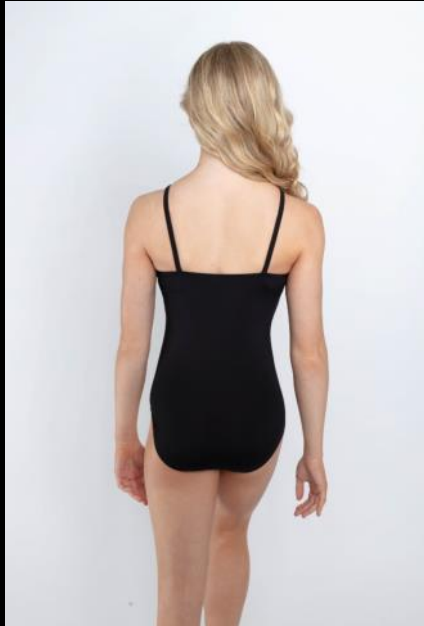
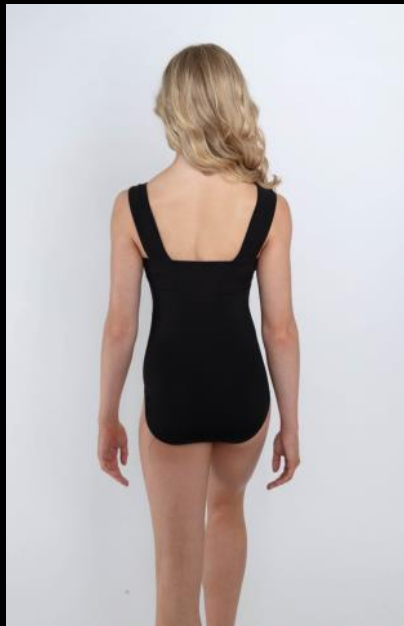
34105: Boat neck 3/4 sleeve overlap back flowy top reversible top. Shown in: Merlot mesh.



39112: Asymmetrical shoulder tie off shoulder sleeve dress. Shown in Navy mesh.

34106: Short sleeve tunic
Shown in: Ivory mesh.

BASIC LEOS



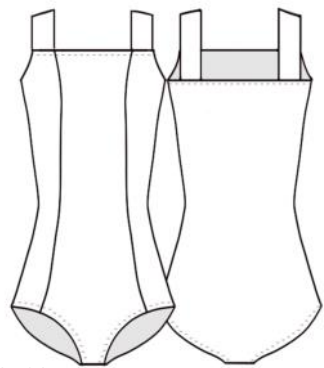
33123- WIDE STRAP
PRINCESS SEAM

03110-FLAT FRONT CAMI

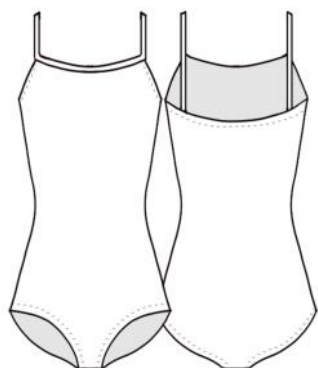
33124- PINCH FRONT
PRINCESS SEAM CAMI

03109- ZIP BACK, NECK
LONG SLEEVE

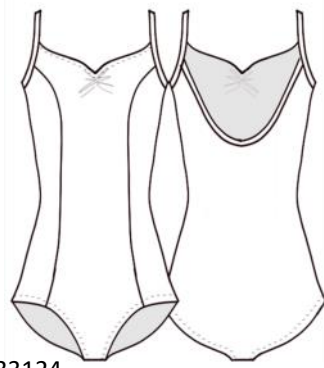
SEE MORE BASIC STYLES AT WWW.BPDESIGNS.US



33123



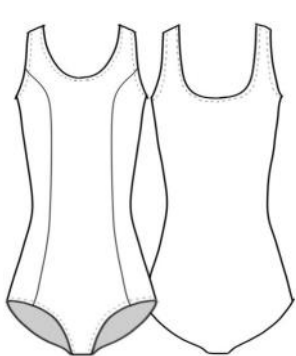
03110



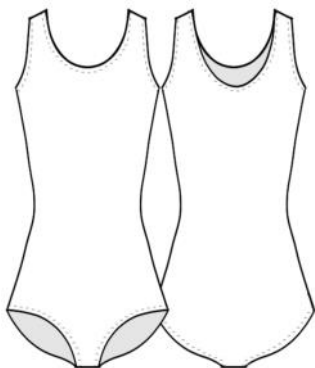
33124



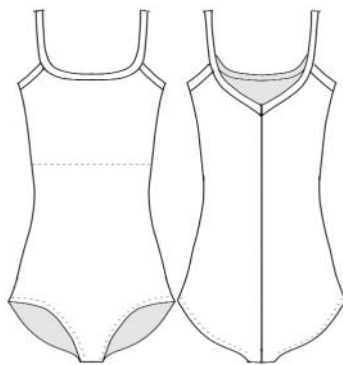
03109



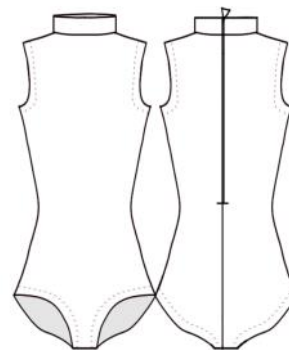
73120



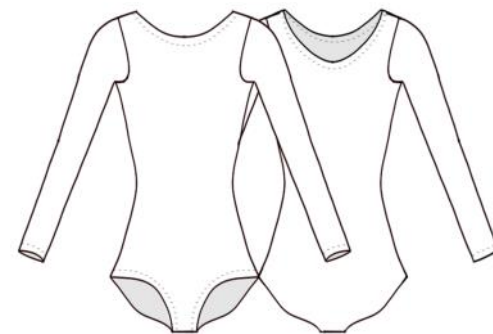
33121



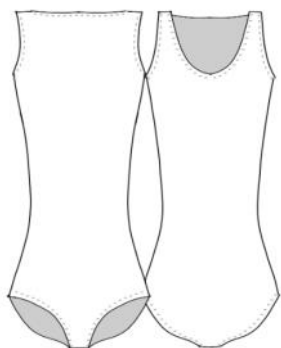
33122



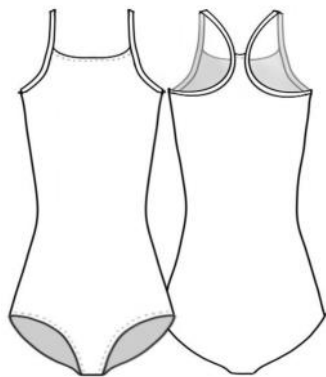
03108



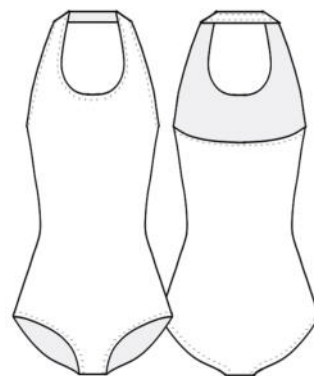
03107



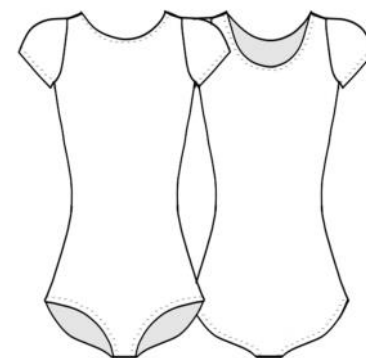
73132



33125



73122



03102

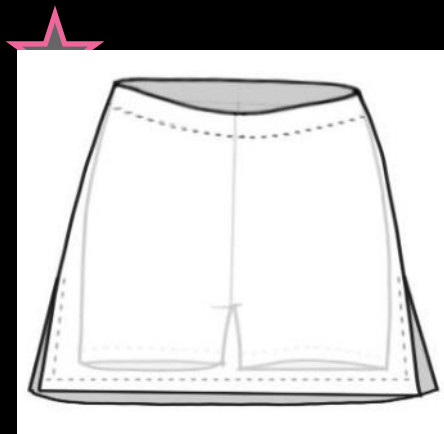
BOTTOMS



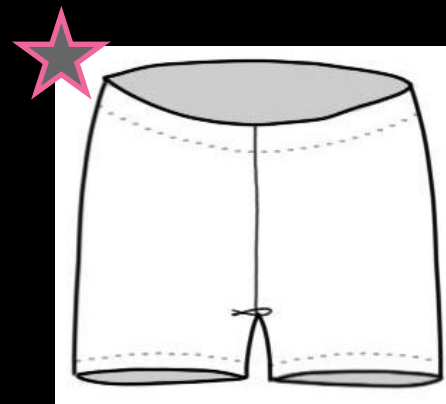
87505: High rise, 2.75" inseam



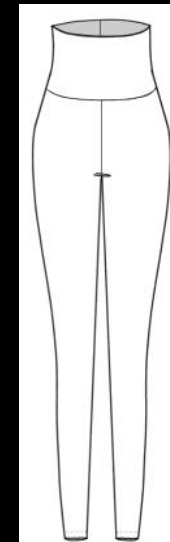
82102: Medium rise skort, with 1" elastic waistband, 2" inseam on shorts



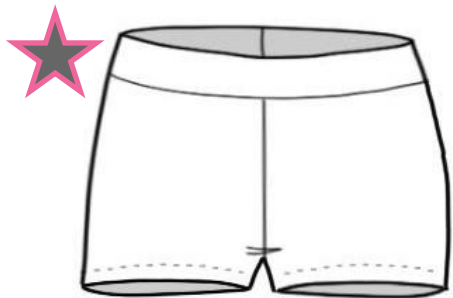
37101: Low rise short, with 1" elastic waistband, 2.75" inseam



31123: High rise, wide waistband leggings



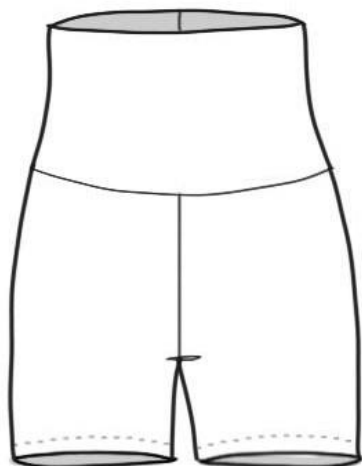
See the next page for more styles of bottoms, can be ordered in Silken, Dryflex, Matte, Shiny, or Mystique Fabrics.



STYLE 37100

RISE: LOW (NO ELASTIC)

INSEAM: 1.6"



STYLE 87507

RISE: HIGH

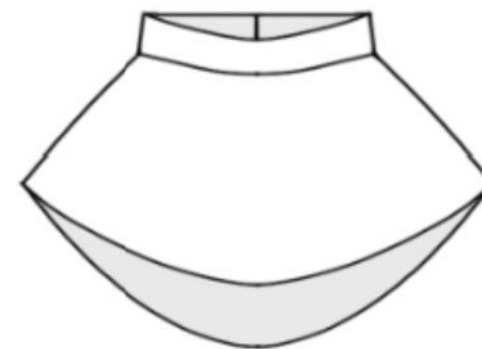
INSEAM: 4"



STYLE 37118

RISE: HIGH

INSEAM: 2.75"



STYLE 02115

FINE KNIT SKIRT



STYLE 37102

RISE: REGULAR (NO ELASTIC)

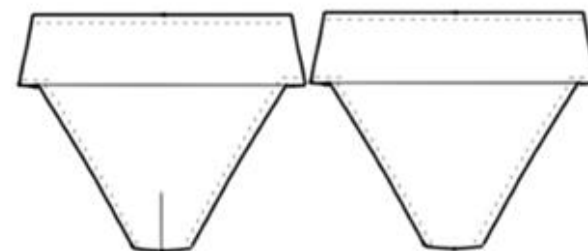
INSEAM: 2.75"



STYLE: 37114

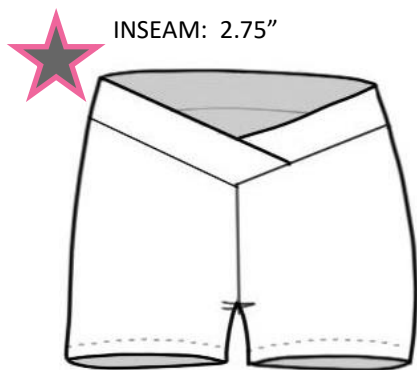
RISE: MEDIUM

INSEAM: 4"



STYLE: 8821

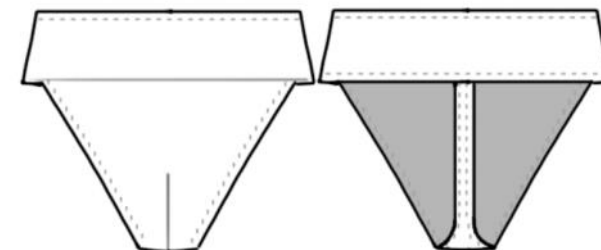
FULL BACK DANCE BELT



STYLE 87506

RISE: REGULAR

INSEAM: 2.75"



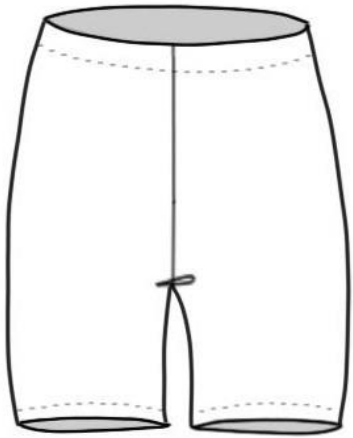
STYLE: 8720

THONG BACK DANCE BELT

 **STOCK STYLE**

**ALL STYLES AVAILABLE IN
NATURAL AND CHOCOLATE**

★ STOCK STYLE



STYLE 37115

RISE: MEDIUM 1" ELASTIC

INSEAM: 6"



STYLE 05106

RISE: MEDIUM (NO ELASTIC)

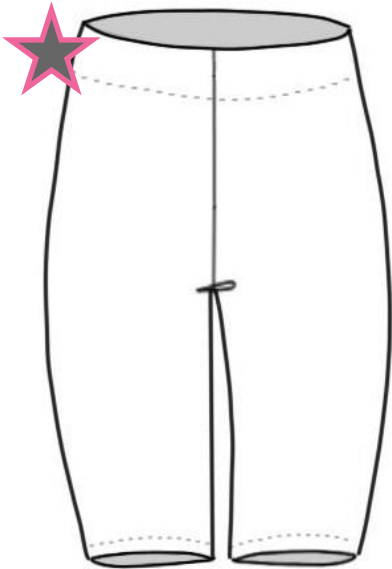
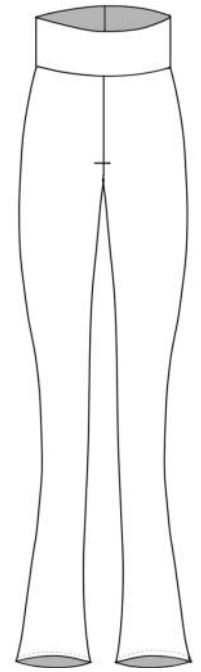
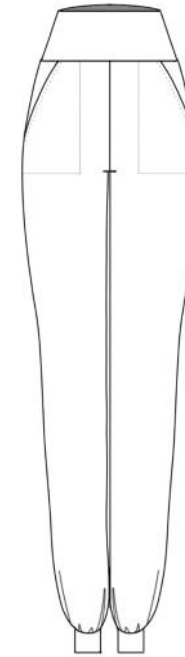
LEG HOLE- REGULAR



STYLE 05108

RISE: HIGH 1" ELASTIC

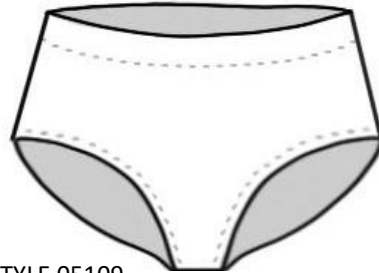
LEG HOLE: REGULAR



STYLE 37122

RISE: MEDIUM 2" ELASTIC

INSEAM: 9.5



STYLE 05109

RISE: REGULAR/LOW 1" ELASTIC

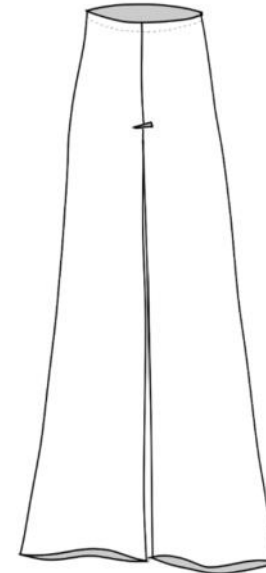
LEG HOLE -REGULAR



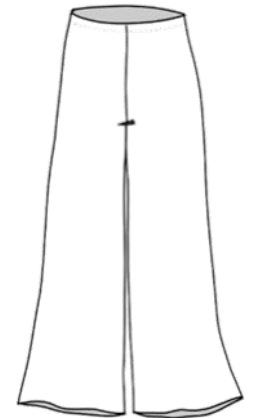
STYLE 05110

RISE: MEDIUM 1" ELASTIC

LEG HOLE: REGULAR

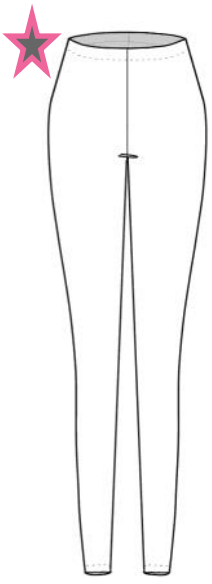


**31604 ANKLE LENGTH
WIDE LEG CAPRI PANT**

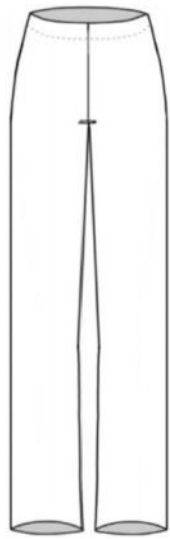


**31603 WIDE LEG CAPRI
PANT**

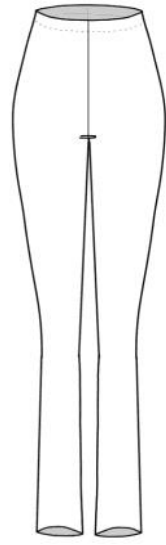
*LEG HOLES CAN BE ORDERED IN LOW, REGULAR, AND HIGH, SEE PRICE SHEET FOR MORE BRIEF OPTIONS



31101 LOW RISE, ELASTIC WAIST LEGGING



31132 LOW RISE JAZZ PANTS



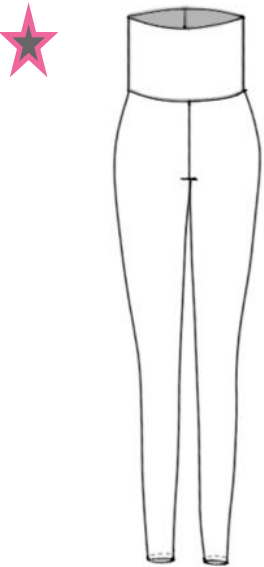
31119 MID/HIGH RISE SUPER SKINNY PANT



31124 HIGH RISE CAPRI WIDE WAISTBAND



31102 MID RISE CAPRI ELASTIC WAIST



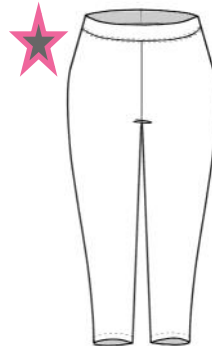
31123 HIGH RISE, WIDE BAND LEGGING



31128 HIGH RISE, WIDE BAND JAZZ PANT



31127 MID/LOW RISE JAZZ PANT



31125 MID RISE CAPRI WITH NO ELASTIC WAISTBAND



Black Dry Flex

White Dry Flex

Neon Pink Dry Flex

Platinum Dry Flex

Red Dry Flex

Carbon Dry Flex

Gold Dry Flex

Light Turq. Dry Flex

Navy Dry Flex

Maroon Dry Flex

Light Pink Dry Flex

Royal Dry Flex

Forest Dry Flex

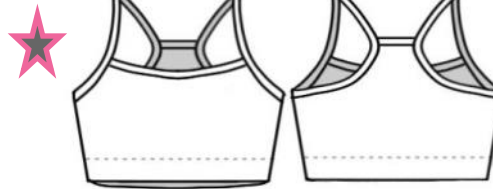
Columbia Blue Dry Flex

Violet Dry Flex

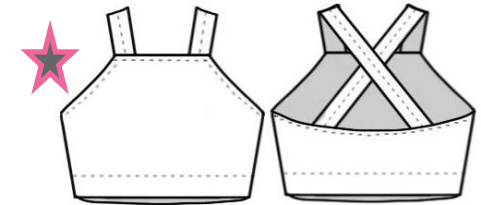
TOPS



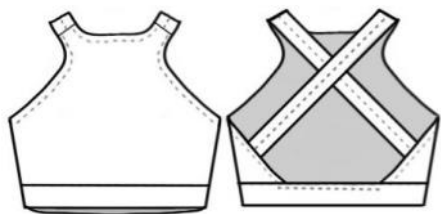
84114 ZIP BACK MOCK NECK CROP



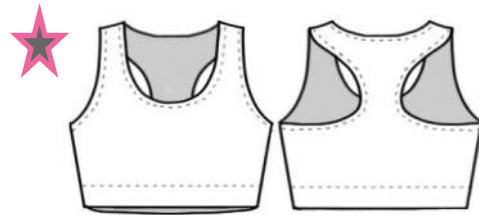
74126 CAMI RACER BRA



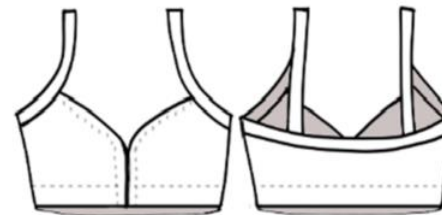
74124 SQUARE NECK CROSS BACK BRA



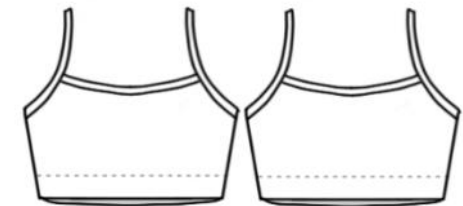
74121 RACERFRONT CROSS BACK BRA



04105 RACERBACK BRA



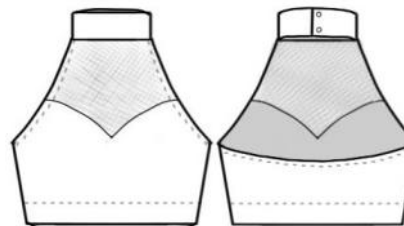
04114: PLUNGING BRA



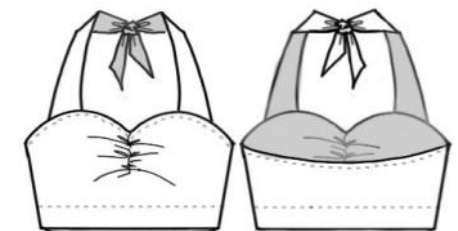
74136 CAMI BRA



74132 CAMI V BACK BRA

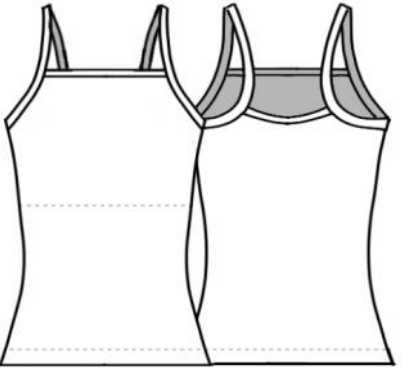


74307 MESH CHEST SWEETHEART MOCK NECK

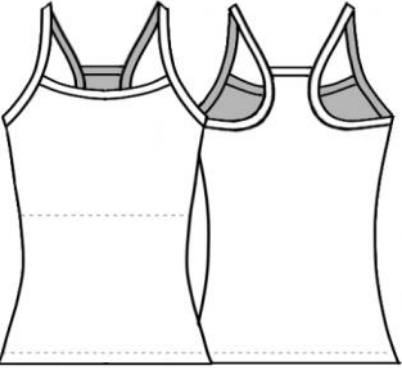


74114 SWEETHEART TIE BACK BRA

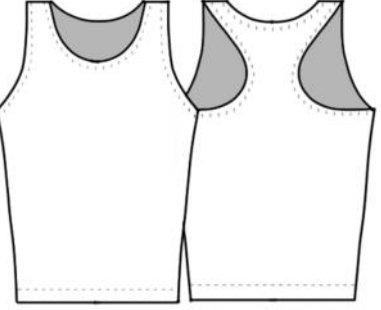
Garment bags



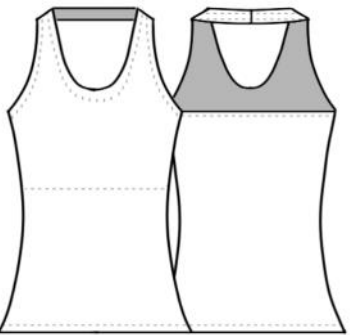
74138



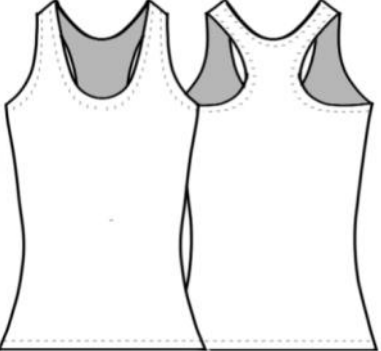
74135



74158



74137



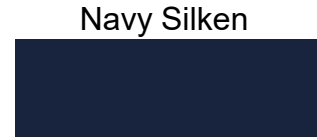
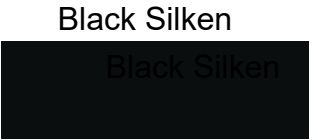
04102



Short garment bags



Long garment bags



FASHION



73346 Demi leotard in coral

73339 Hannah leotard in cantaloupe

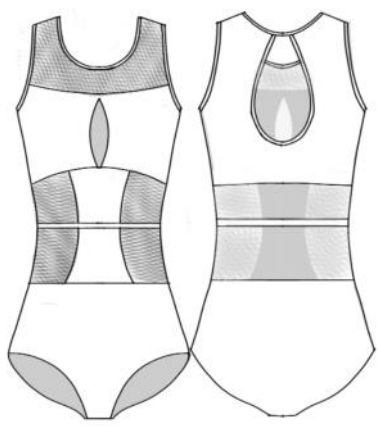
73342 Trixie leotard in lemon

73340 Cassie leotard in mint

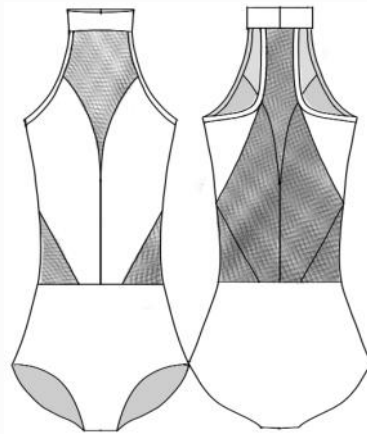
33605 Caroline leotard in tropical turquoise

33606 Sadie leotard in violet

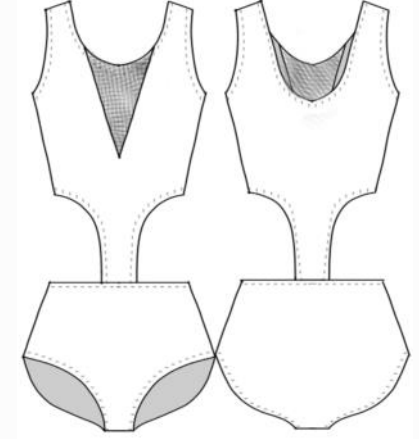
73324 Michelle leotard in cerise



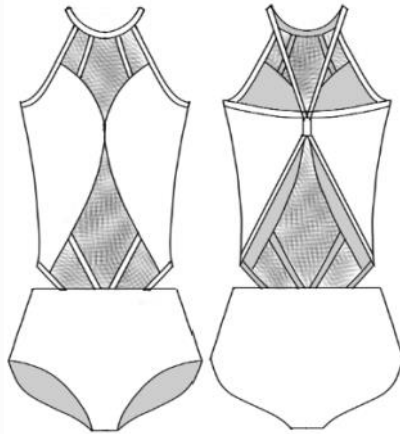
73346 Demi leotard



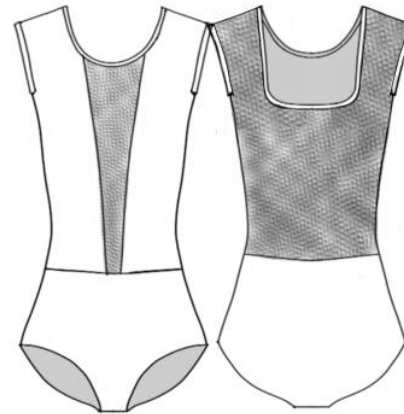
73339 Hannah leotard



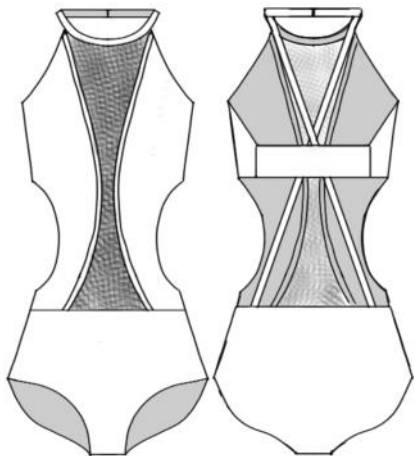
73342 Trixie leotard



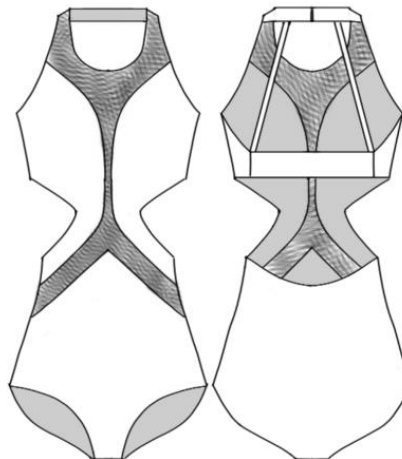
73340 Cassie leotard



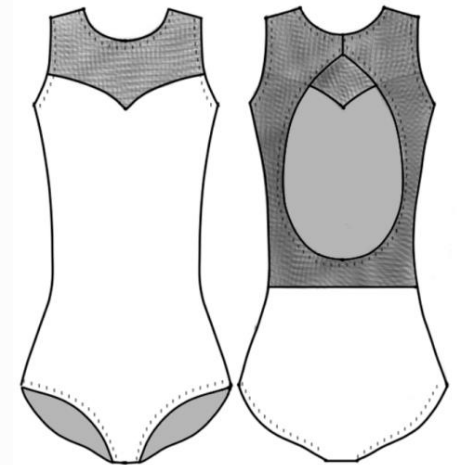
33605 Caroline leotard



33606 Sadie leotard



73324 Michelle leotard



73325 Sunny leotard

FASHION



73321: Crescent leotard

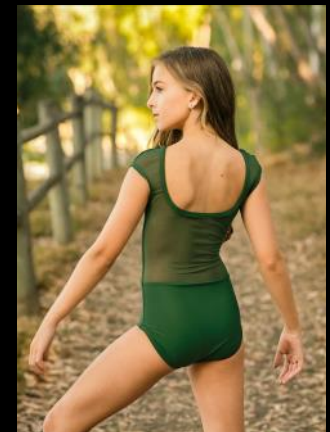


73325: sunny leotard
neon orange, glow green,
samba yellow, and coral

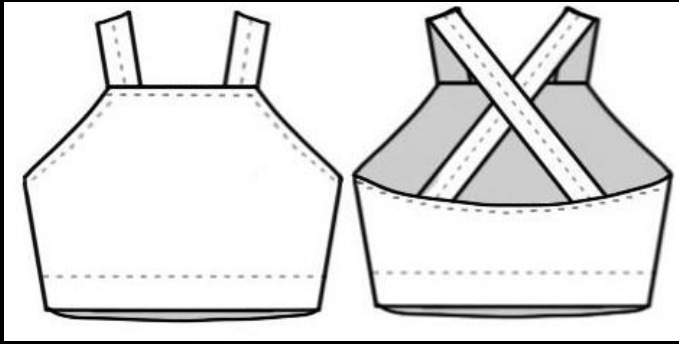


74124: Cross back bra top

05108: High waisted brief with 1" waistband



33605: Caroline leotard

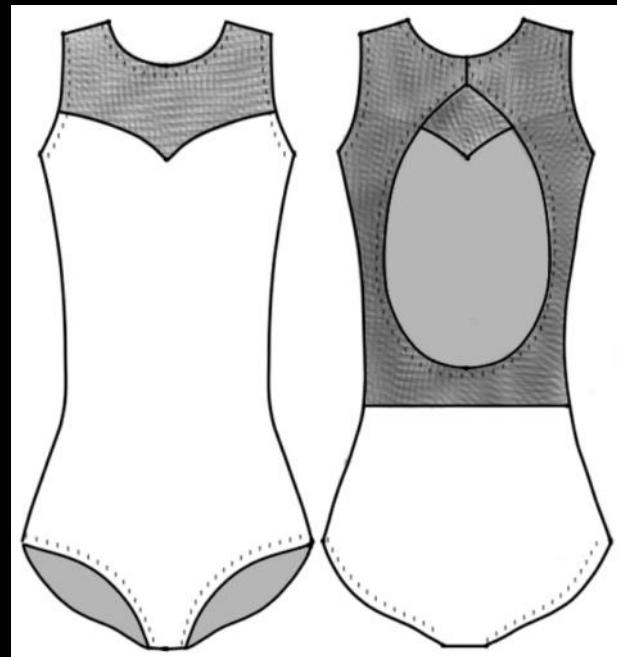


74124: Cross back bra top

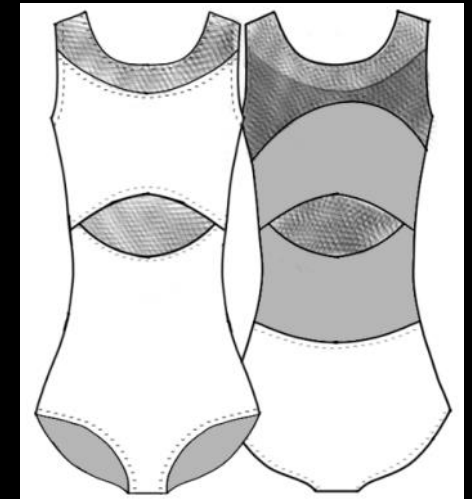
05108: High waisted brief with 1" waistband



33605: Caroline leotard

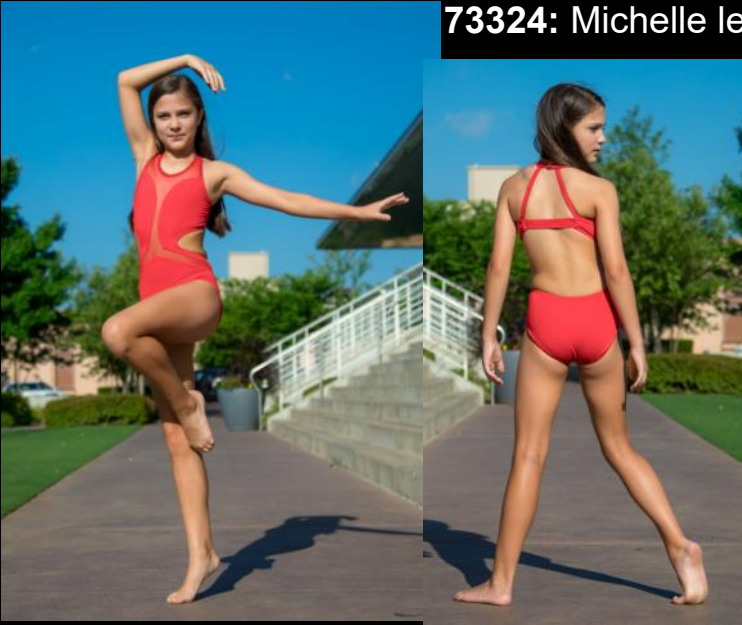


73325: sunny leotard
neon orange, glow green,
samba yellow, and coral



73321: Crescent leotard

73324: Michelle leotard



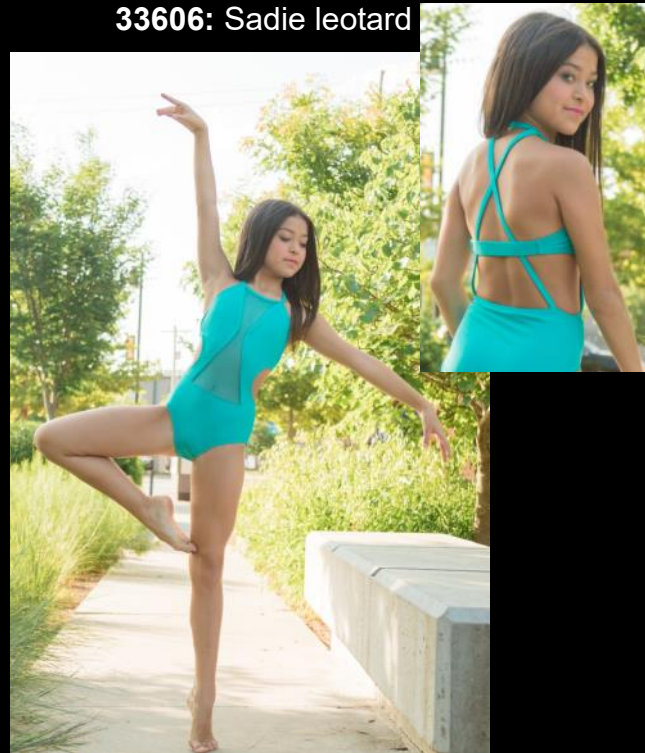
73124: Jessica leotard



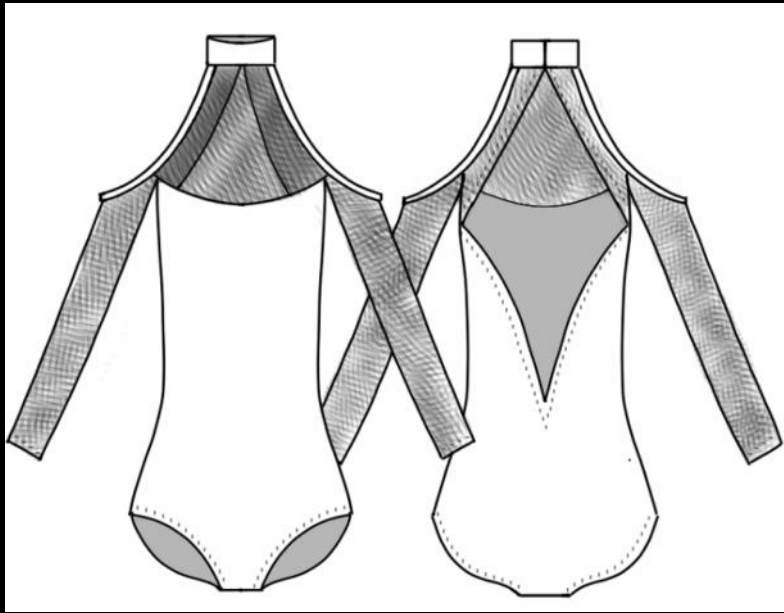
32003: Character skirt



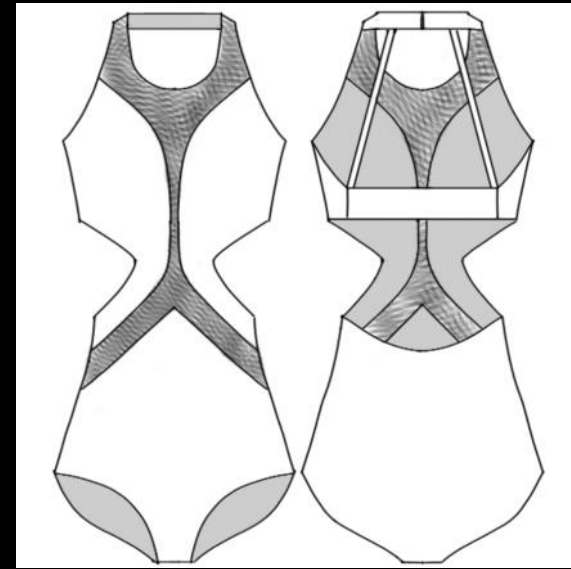
33606: Sadie leotard



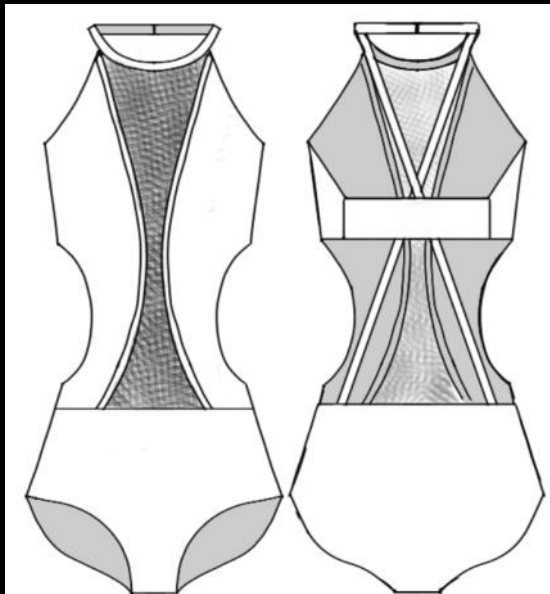
73322: Lauren leotard



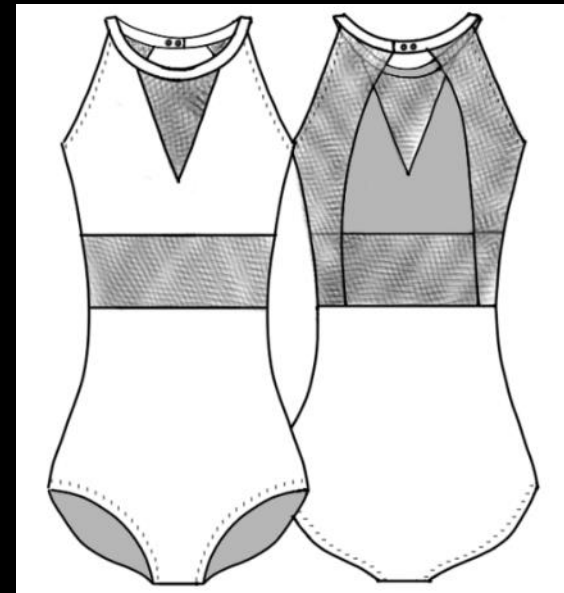
73124: Jessica leotard



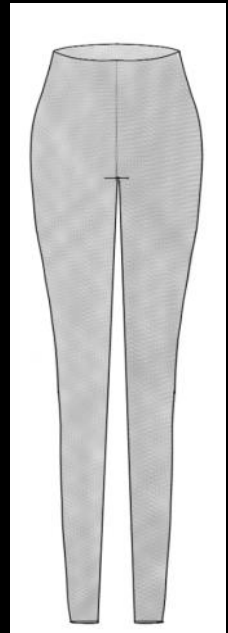
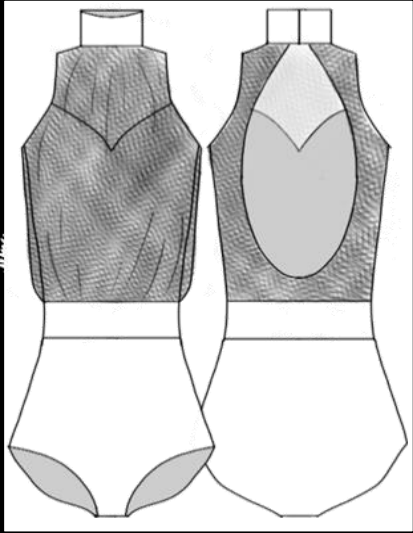
73324: Michelle leotard



33606: Sadie leotard



73322: Lauren leotard



93303: Mock neck blouse front leotard

31601: Mesh legging

LITTLE GIRLS



39107: Cap sleeved skirted leotard



39110: Ruffled sleeved skirted leotard



39106: Bow back skirted leotard

TEAM DRESSES



- White Mystique
- Silver Mystique
- Café Gold Mystique
- Gold Mystique
- Orange Mystique
- Red Mystique
- Wine Mystique
- Berry Mystique
- Eggplant Mystique
- Columbia Mystique
- Light Blue Mystique
- Ocean Mystique
- Royal Mystique
- Kelly Mystique
- Navy/Black Mystique
- Black Mystique
- Navy/Black Zsa Zsa
- Black Zsa Zsa



89327: Mock neck sleeveless dress



89321: Mock neck long sleeve dress



89326: Cross Front Mesh Sleeve Dress



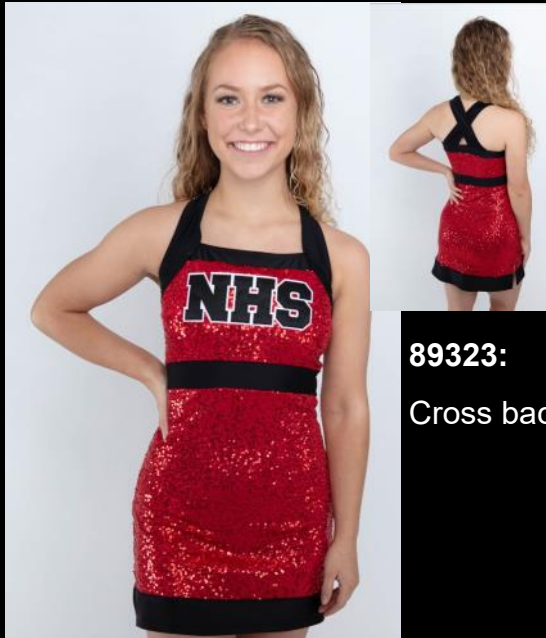
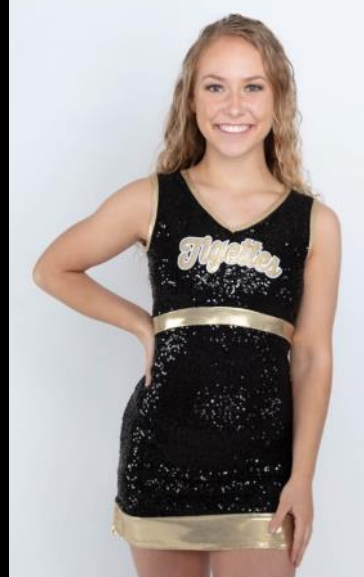
89328: Trimmed Halter Dress

Dresses available in Solid, Mystique, or Sequin. Custom lettering available on all our designs. See more Designs at www.bpdesigns.us



89330: Camisole sport dress

89322: V Front and back dress



89323:
Cross back dress



89329: Color block mesh sleeve dress



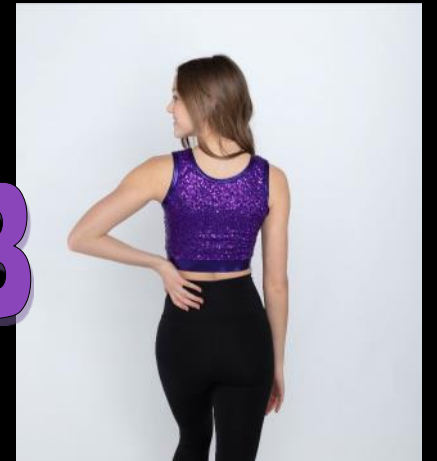
- Gunmetal Zsa Zsa
- White Zsa Zsa
- Silver Zsa Zsa
- Gold Zsa Zsa
- Orange Zsa Zsa
- Red Zsa Zsa
- Wine Zsa Zsa
- Berry Zsa Zsa
- Light Pink Zsa Zsa
- Merlot Zsa Zsa
- Grape Zsa Zsa
- Purple Zsa Zsa
- Columbia Zsa Zsa
- Turquoise Zsa Zsa
- Light Blue Zsa Zsa
- Royal Zsa Zsa
- Ke lly Zsa Zsa



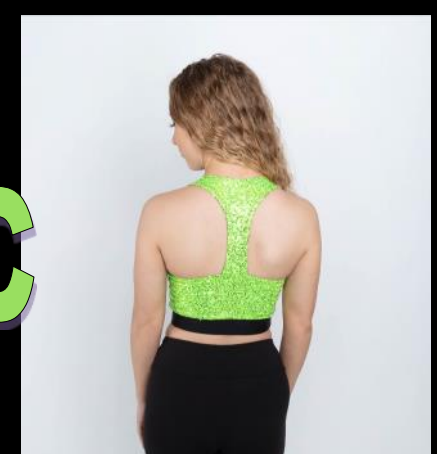
A



B



C



- A. **84331**: Mock Neck Zip Front Long Crop, Front Lined, Shown in Berry Zsa Zsa with Black Mystique
- B. **84334**: Tank Long Crop with trim, Front lined, Shown in Purple Zsa Zsa with Purple Mystique Trim
- C. **84333**: Collar Long Crop, Front Lined Shown in Lime Zsa Zsa with Black Matte



A. 84332 Cold Shoulder Crop, Front Lined for Prints (Left Teal Mystique, Right Checks)

B. 84335 Wide Shoulder Mock Neck Crop, Zip Back, Front lined (Shown in Krazy Waves)

***More Color Options Available in this pattern, see Price list for details**

LONG TOPS



84303: Ashley top



04102: Racerback top



84344: Cross back long top



84314T: Racerback long top shoulder color block



74313: Long trim back top



74314: Cowl back built in bra long top



74323: Sequin cross back top



84340: Wide shoulder trimmed tank



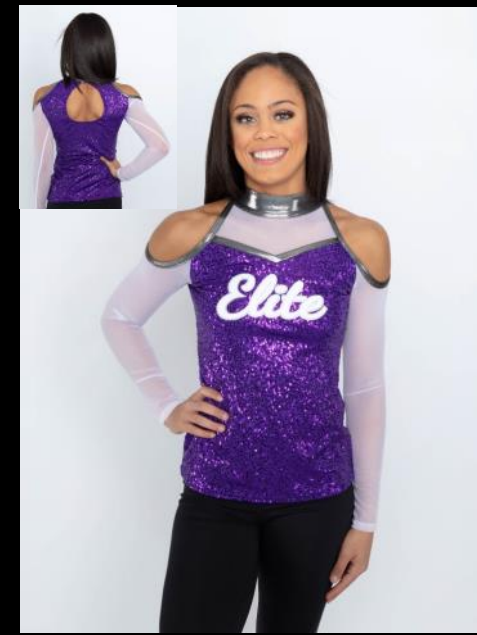
84346: Sideline color block top



84342: Mock neck sleeveless long top



84348: Long sleeve straight front top



84343: Cold shoulder top long sleeve

SUBLIMATION & FIELD DRESSES



Half Skirt Biketard: 89324, Zip Back Biketard with Half Skirt Attached. Available with Long legs, Full Skirt, 3/4 Skirt, or Skirt opening on either hip. For Custom options on this costume contact us.

Custom Sublimated styles will be created with artwork just for you. Price is Printed, Also available in Solid colors. Art Fees will apply with Sublimation.

A. 96318(Mock neck tank unitard)

B. 96316(Mock neck asymmetrical sleeve and pant unitard)

C. 96317(Mock neck long sleeve unitard)

COSTUMES



96315: Mesh overlay mock neck unitard.

A



96314: Mock Neck Zip Back Unitard, Mesh Back,



96311: Open back, V front, mock neck unitard with mesh capri



99321: Deep plunge roused front dress with attached brief



Top 84336: Sweetheart Crop
Pant 31112: Wide Panel, High Waisted Leggings



99327TOP: Mesh mock neck open back teardrop crop



99326: Plunge front, asymmetric skirted performance leo dress



A- 99328: Scoop neck tank dress with attached biketard and fly away skirt. Shown in: Gunmetal Zsa Zsa top, Steel matte trim and short and Black mesh skirt.

B- 99324: V pinch front cami dress with cross back straps, attached brief and mesh skirt. Shown in: Navy Zsa Zsa top, Navy matte straps and brief, and Navy mesh skirt

C- 99325: Boatneck long sleeved dress with asymmetrical mesh skirt and attached biketard. Shown in: Navy velvet top, Steel shiny short and Steel mesh skirt.

D- 99323: Mock neck high low dress with attached brief keyhole back with a high low mesh skirt. Shown in: Merlot matte top, D. Rose LG lace overlay, D. Rose brief and D.Rose mesh skirt.



76319: Carolina Unitard



76317: Natalia Unitard



76324: Michelle Unitard

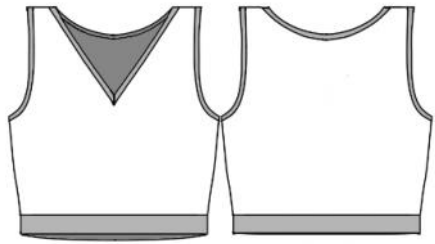


76318: Rachel Unitard

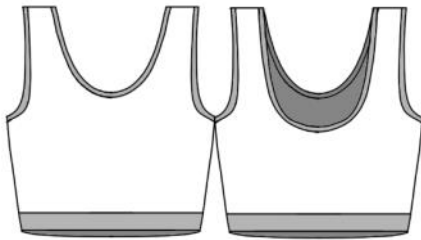


76313: Mesh Leg Unitard

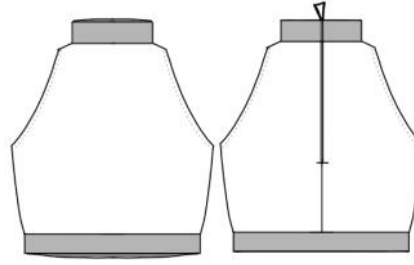




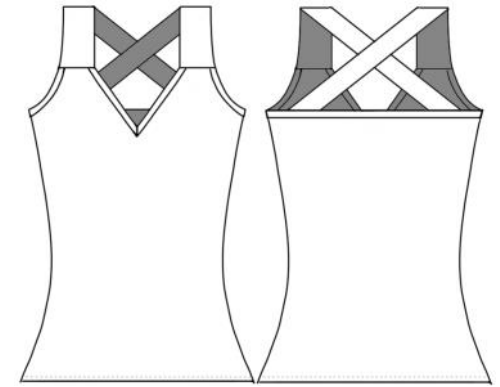
84350



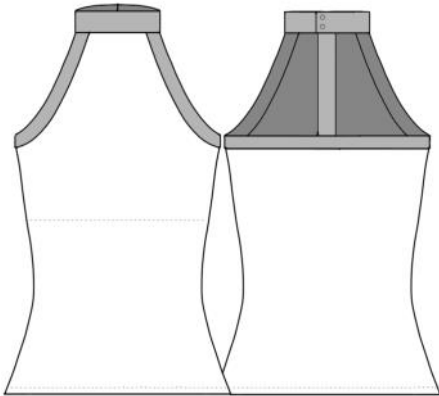
84334



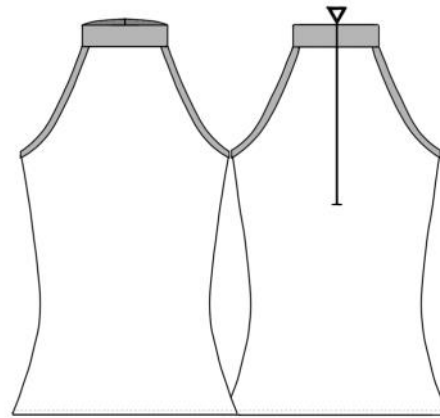
84331



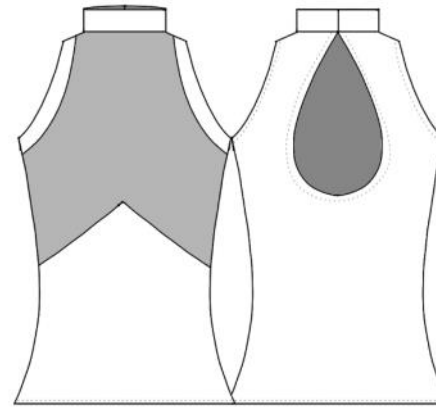
84103



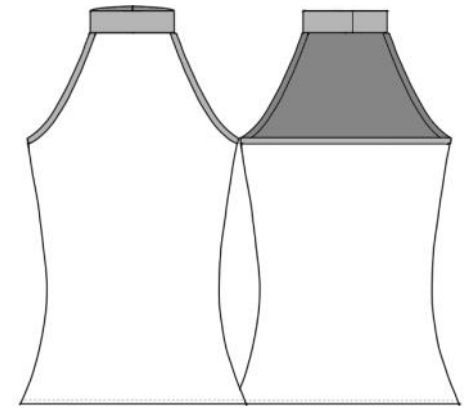
84351



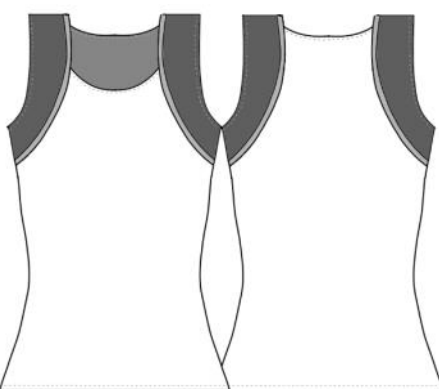
84352



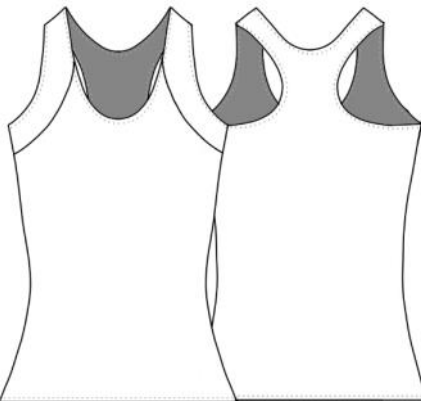
84353



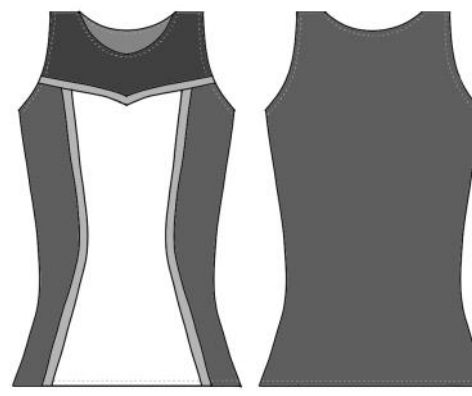
84354



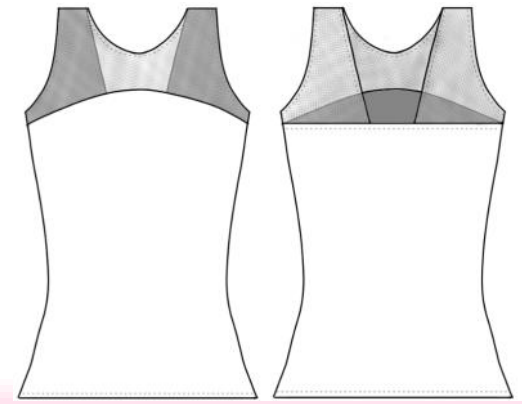
84340



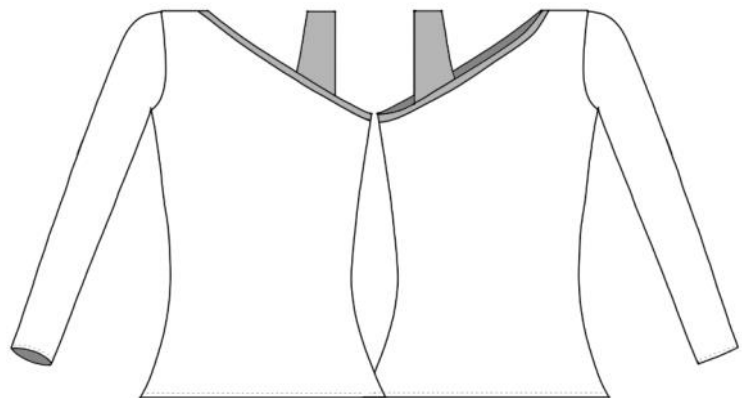
84320



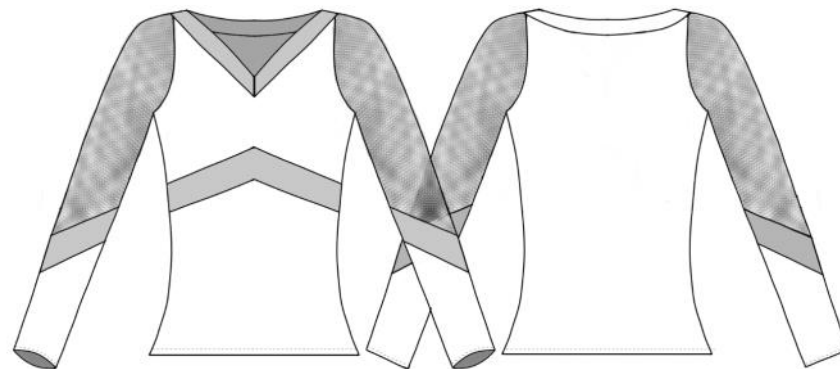
84317



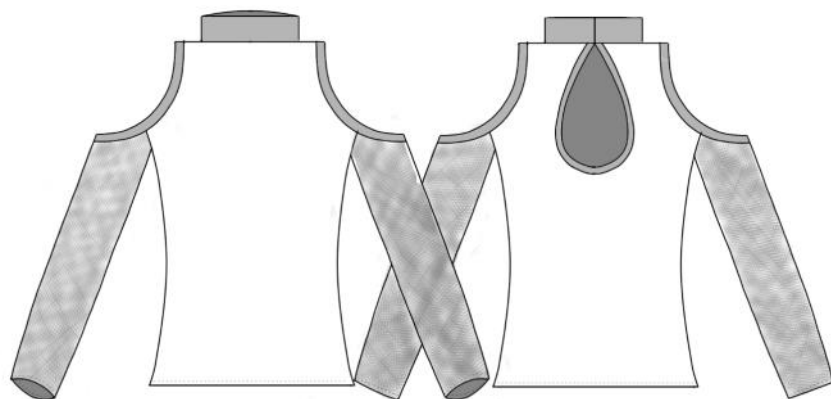
84301



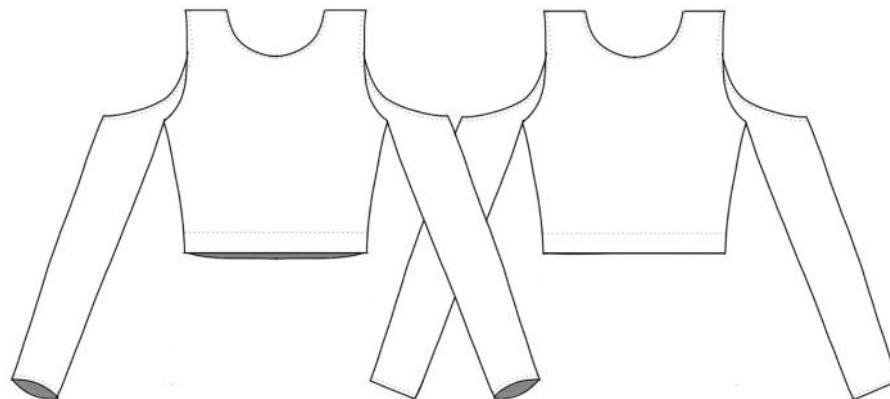
84101



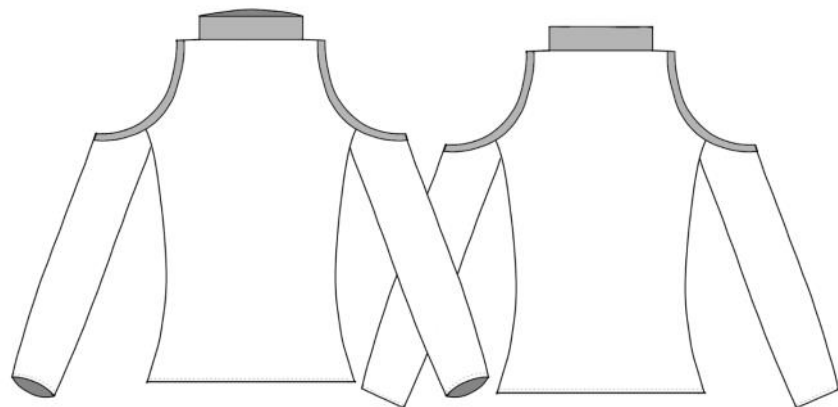
84318



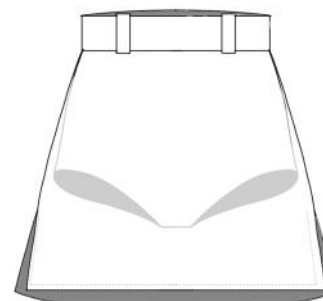
84322



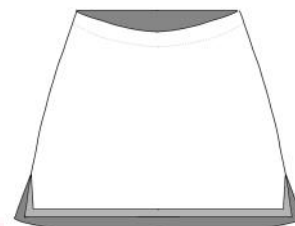
84332



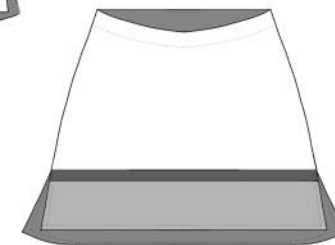
84321



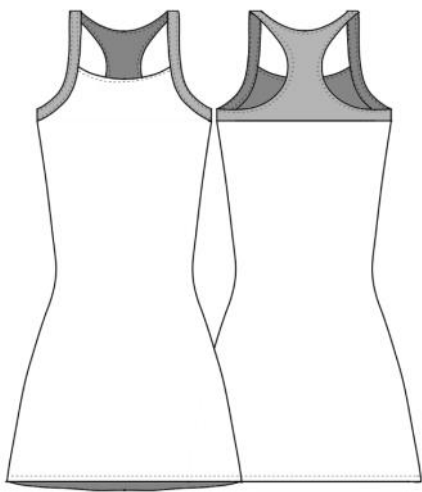
82318



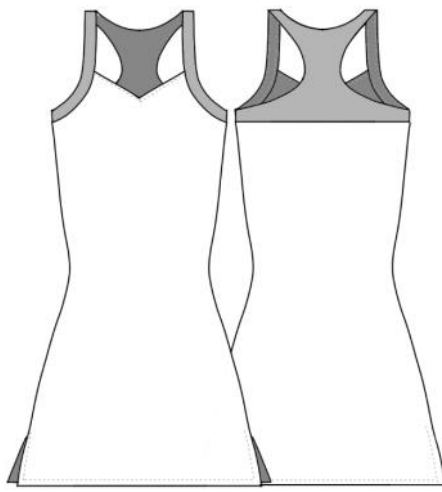
52201



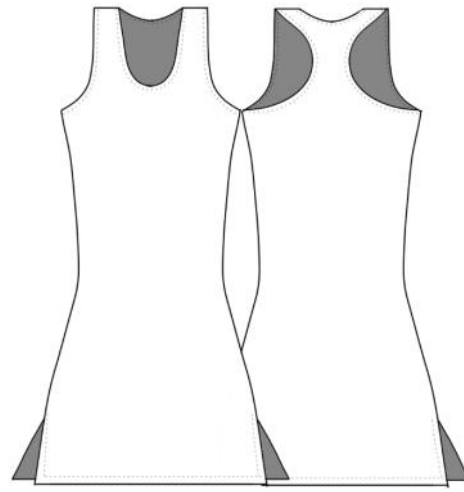
82319



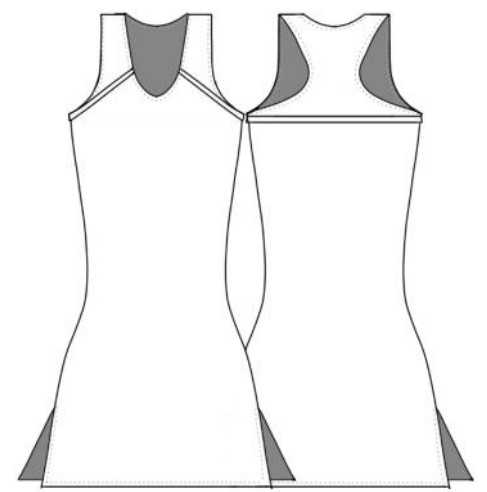
89332



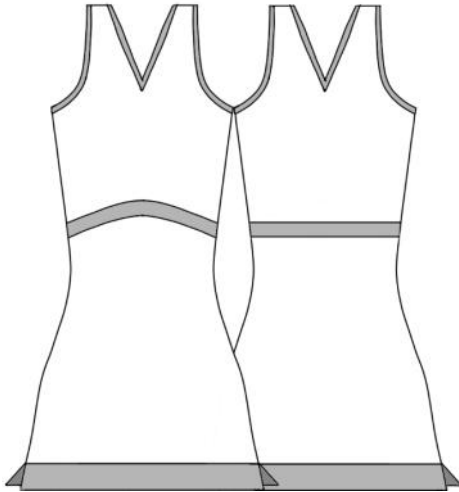
89301



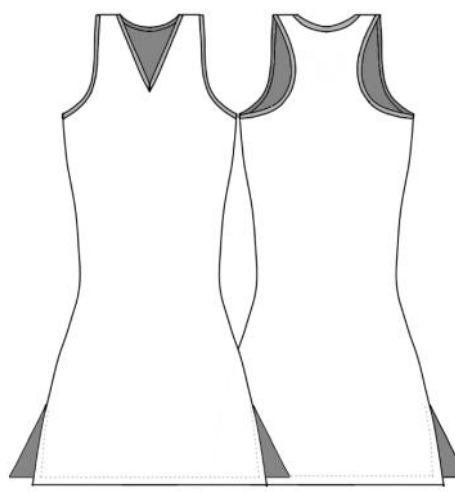
89333



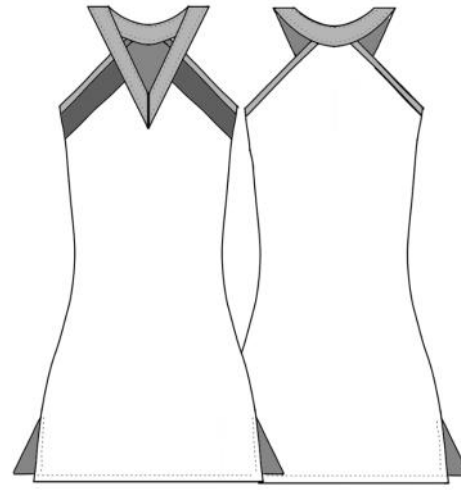
89303



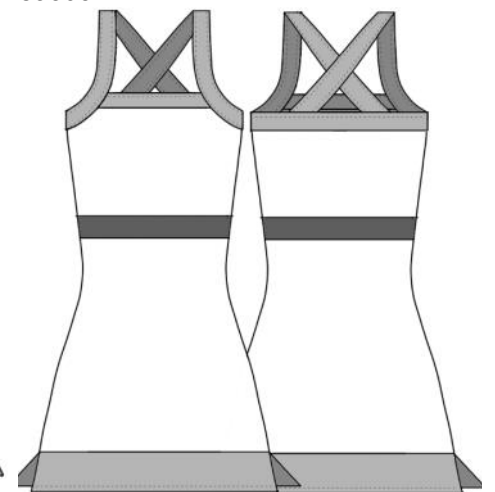
89322



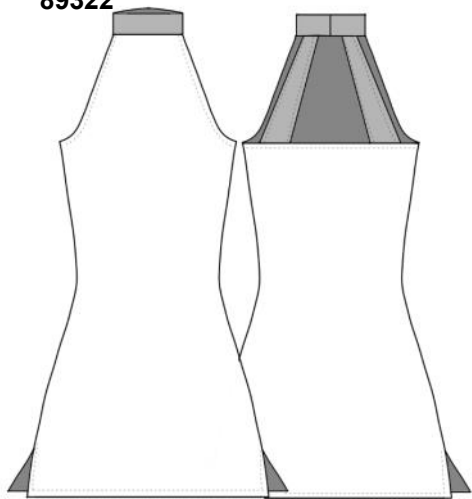
89302



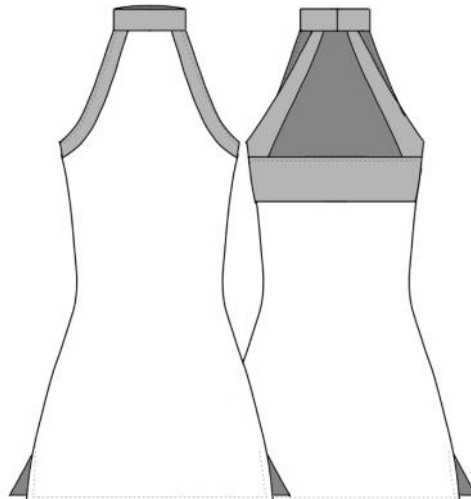
89334



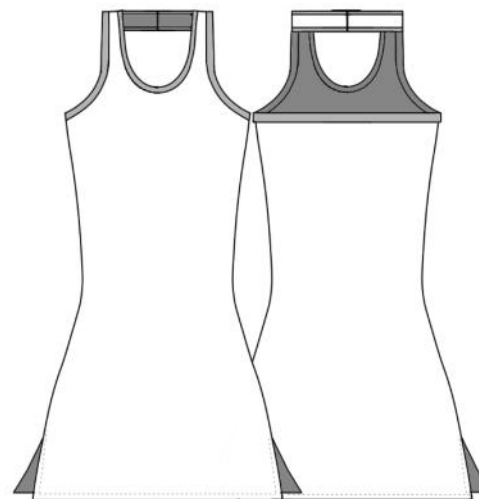
89323



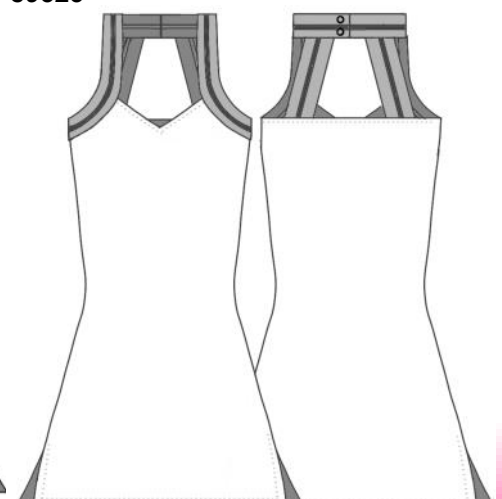
89335



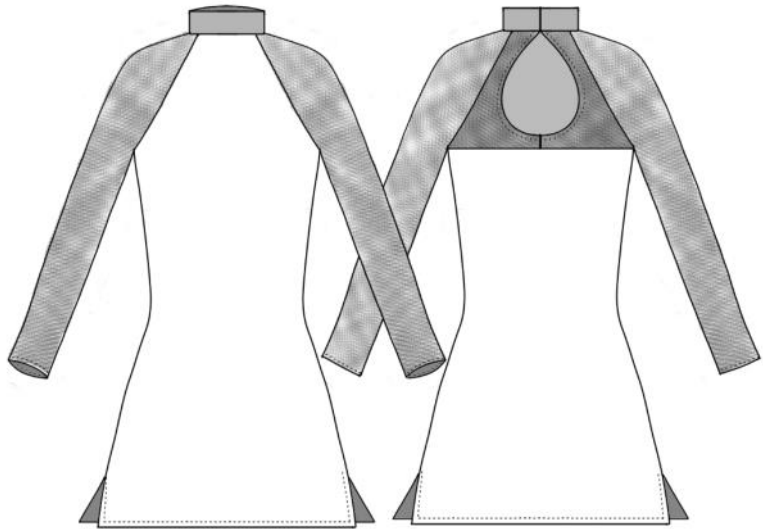
89336



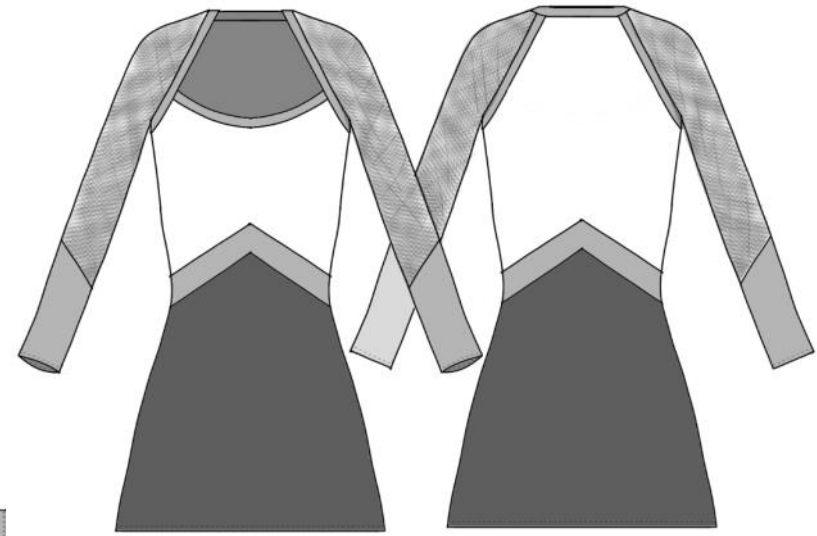
89328



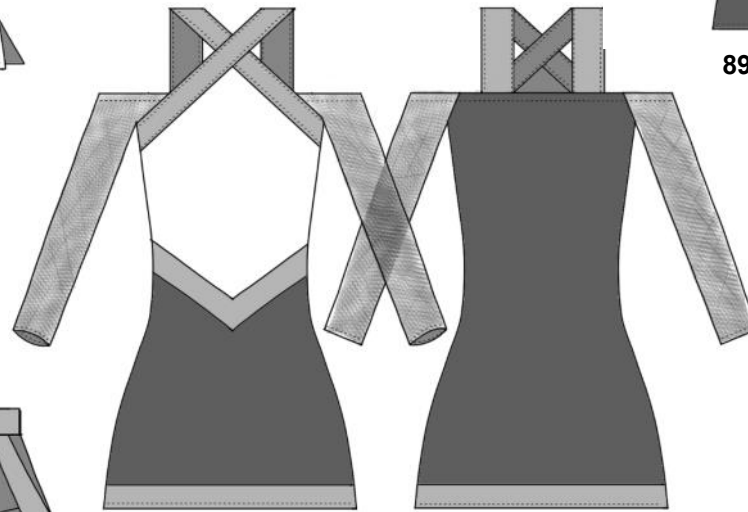
89337



89338

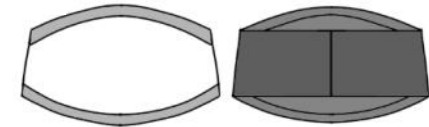


89329

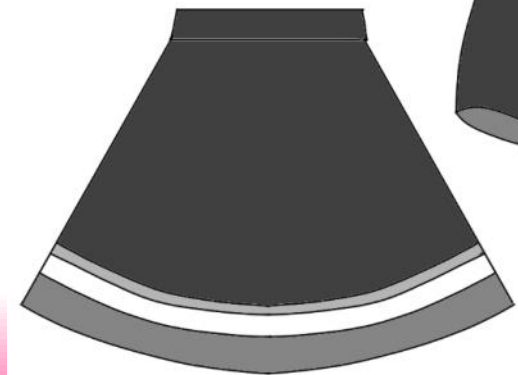
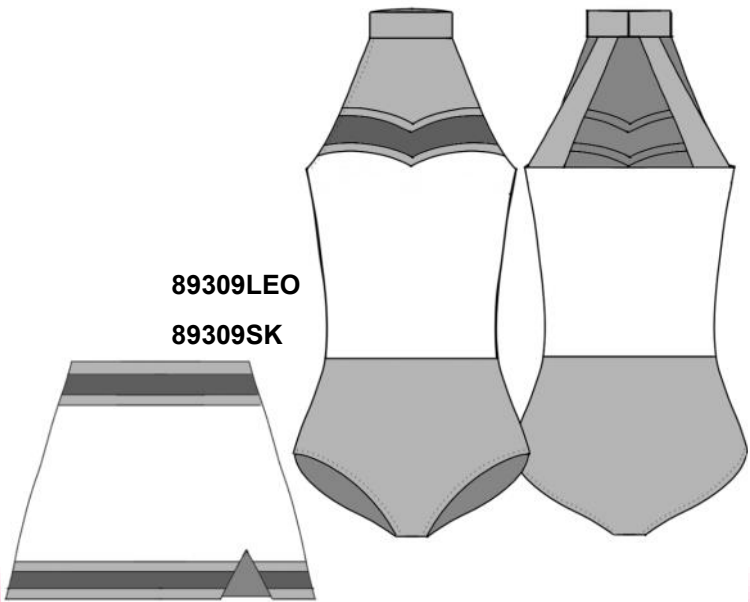


89326

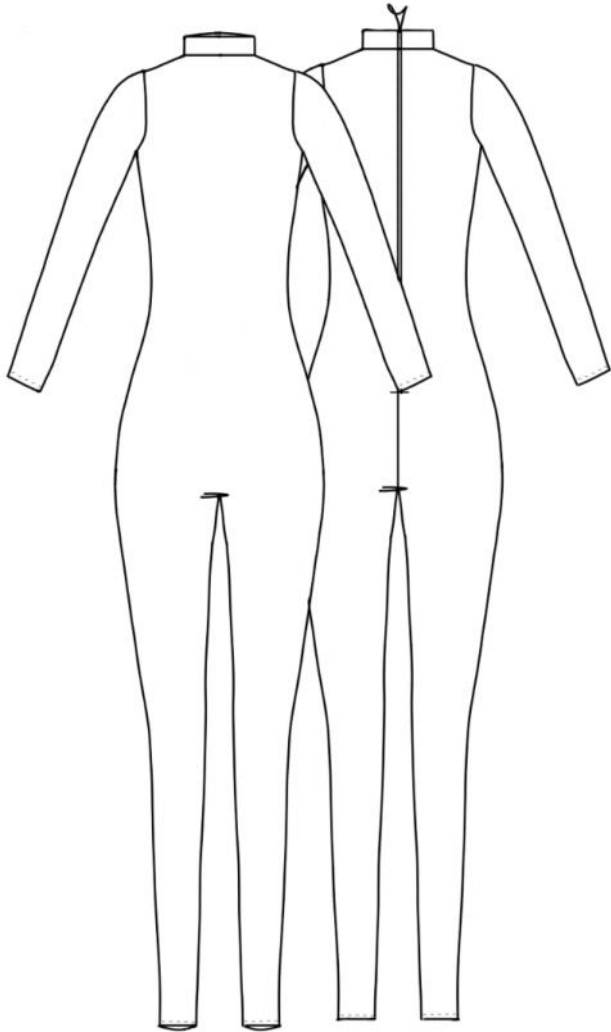
89310LEO
89310BELT
89310SK



89309LEO
89309SK

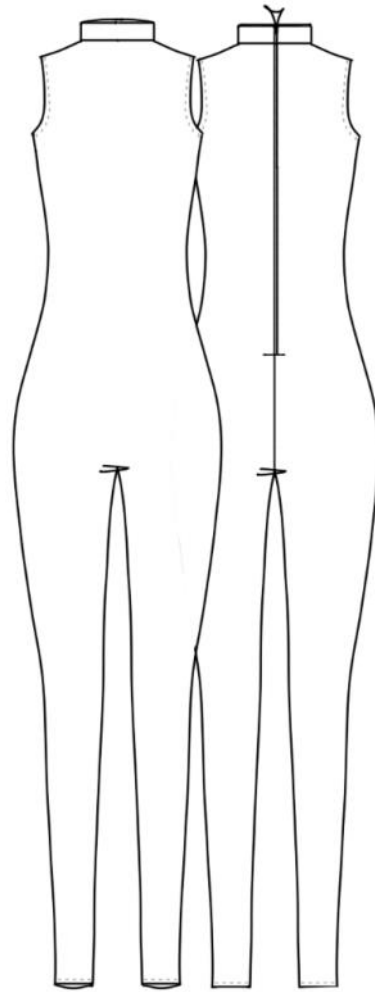


UNITARDS



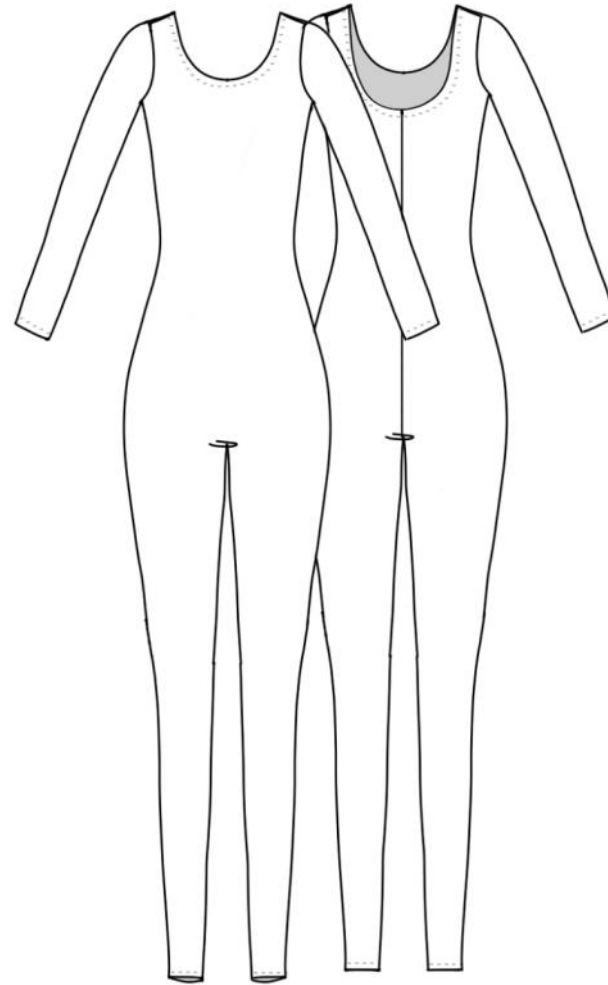
96317

Mock neck long sleeve unitard,
with zipper closer on back



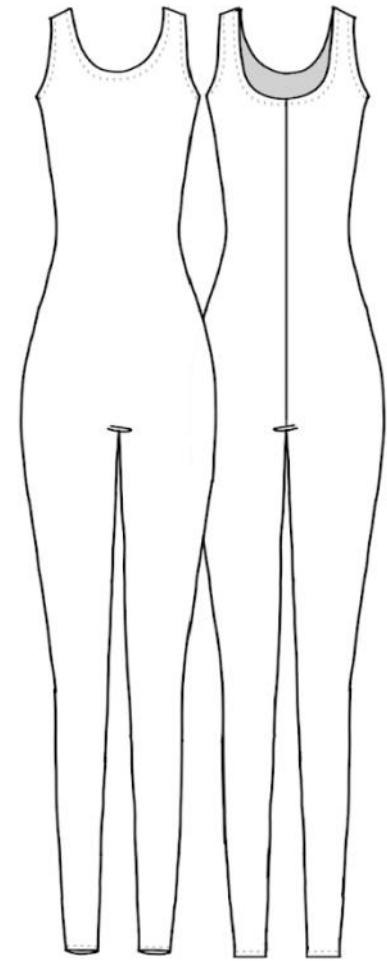
96318

Mock neck sleeveless unitard,
with zipper closer on back



06503

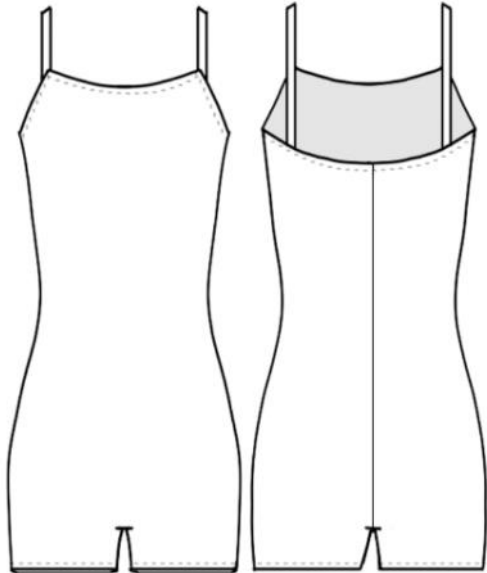
long sleeve scoop neck unitard



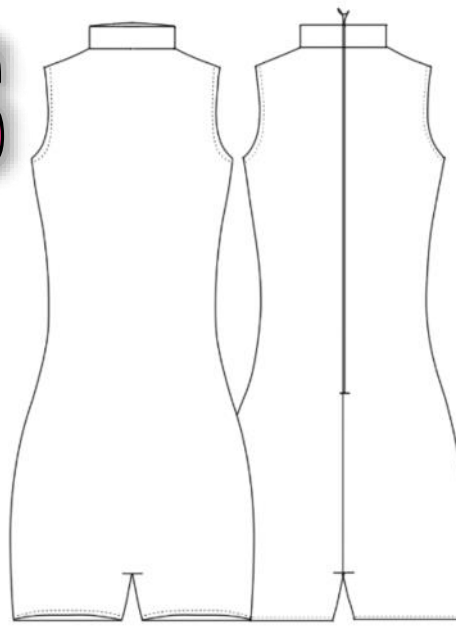
06502

Tank unitard

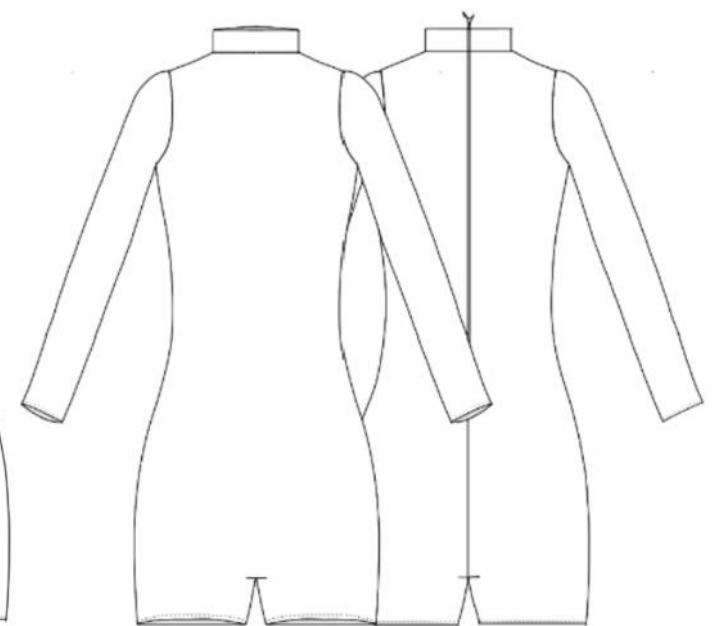
BIKETARDS



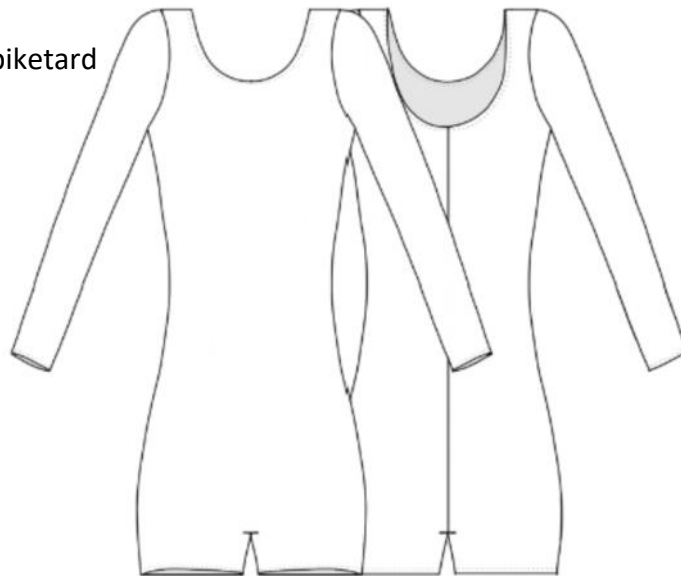
06501
Cami biketard



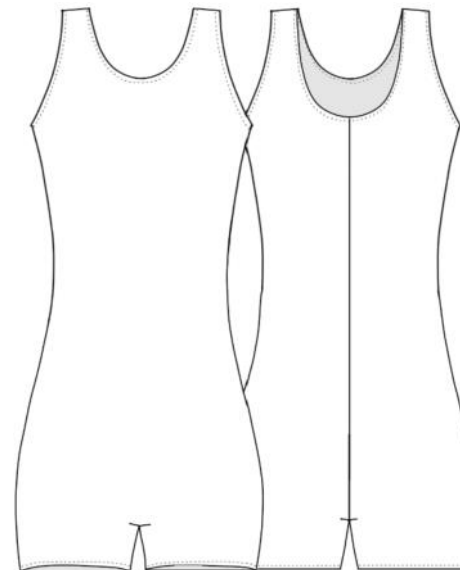
06105
Mock neck sleeveless biketard,
with zipper closer on back



06104
Mock neck long sleeve biketard,
with zipper closer on back



06103
Scoop neck long sleeve biketard

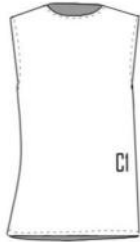


06101
Scoop neck sleeveless biketard

MEN'S BASIC STYLES

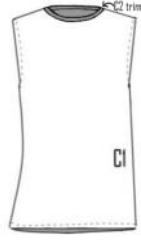
Sleeveless

Crew Neck



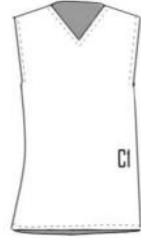
Style# 24102

Crew Neck w/ Trim



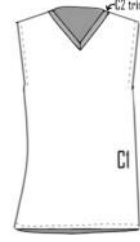
Style# 24300

"V" Neck



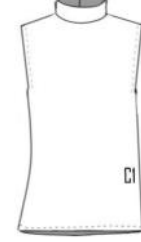
Style# 24104

"V" Neck w/ Trim



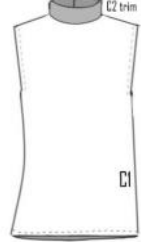
Style# 24324

Mock Neck



Style# 24304

Mock Neck w/ Trim



Style# 24114

Short Sleeves



Style# 24101



Style# 24301



Style# 24103



Style# 24323



Style# 24108



Style# 24908

Long Sleeves



Style# 24105



Style# 24115



Style# 24109



Style# 24329



Style# 24106

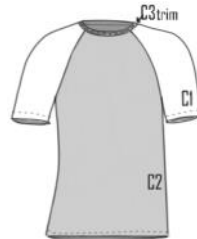


Style# 24906

Raglan Short Sleeve



Style# 24316



Style# 24116



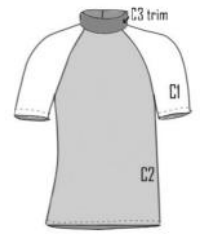
Style# 24321



Style# 24121

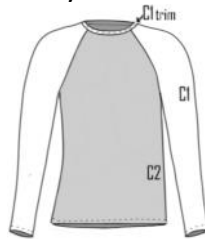


Style# 24320

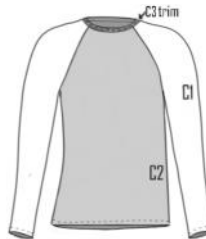


Style# 24120

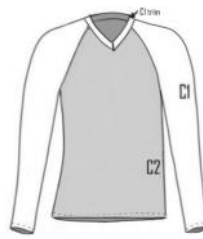
Raglan Long Sleeve



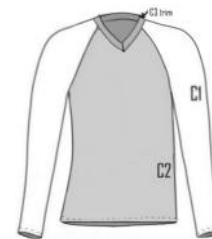
Style# 24322



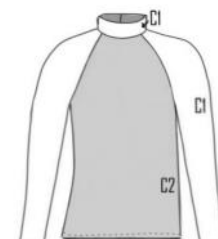
Style# 24122



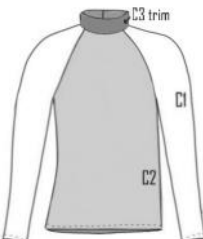
Style# 24325



Style# 24125

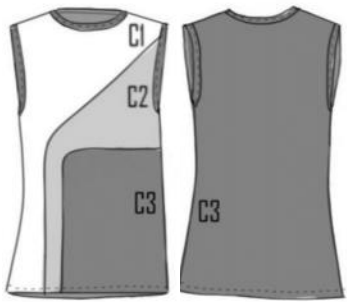


Style# 24326

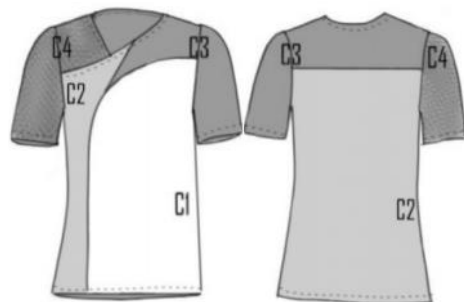


Style# 24126

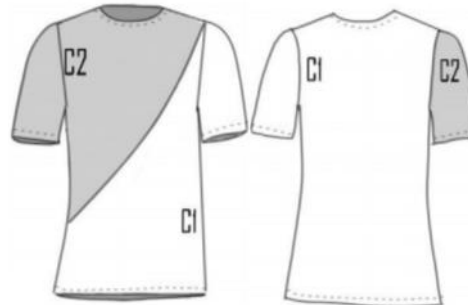
Color Block Styles



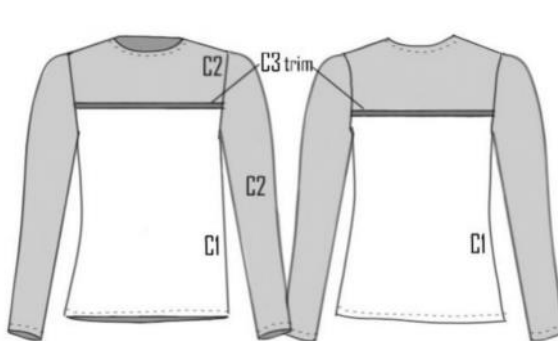
Style# 24305



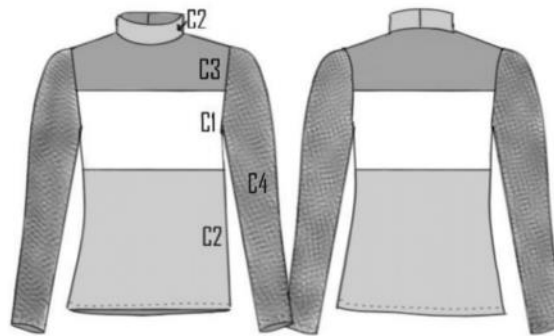
Style# 24306



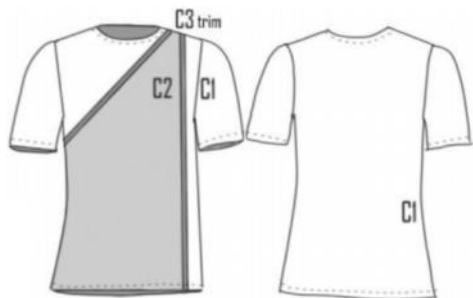
Style# 24309



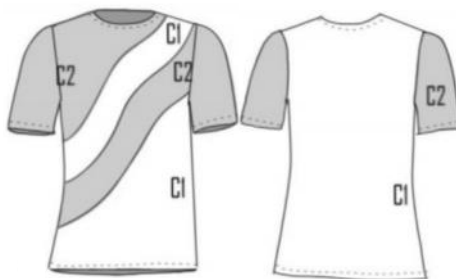
Style# 24911



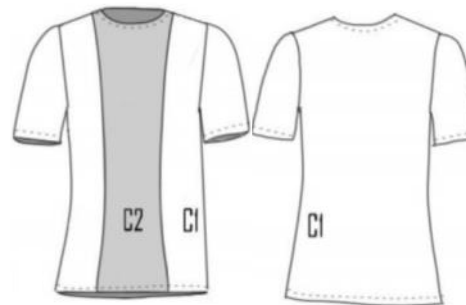
Style# 24912



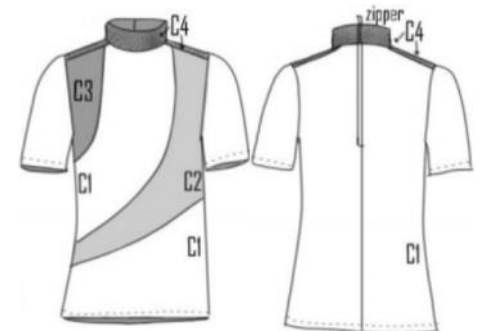
Style# 24308



Style# 24312



Style# 24307



Style# 24313



www.bpdesigns.us

877-618-8777

Adult

Size	Bust	Waist	Hip	Girth	Sleeve Length* (top of shoulder to Wrist)	Inseam* (legging/loose)
AXS	30-32	22-24	32-34	54-56	20	31/34
AS	33-34	25-27	34-35	56-58	21	31/34
AM	35-36	28-29	36-37	58-60	22	31/34
AL	37-38	29-30	38-39	60-62	23	31/34
AXL	39-40	31-32	40-41	62-64	24	31/34
A2XL	41-42	33-34	42-43	64-66	25	31/34
A3XL	43-44	35-36	44-45	66-68	25	31/34
A4XL	45-47	37-39	46-48	68-71	25	31/34

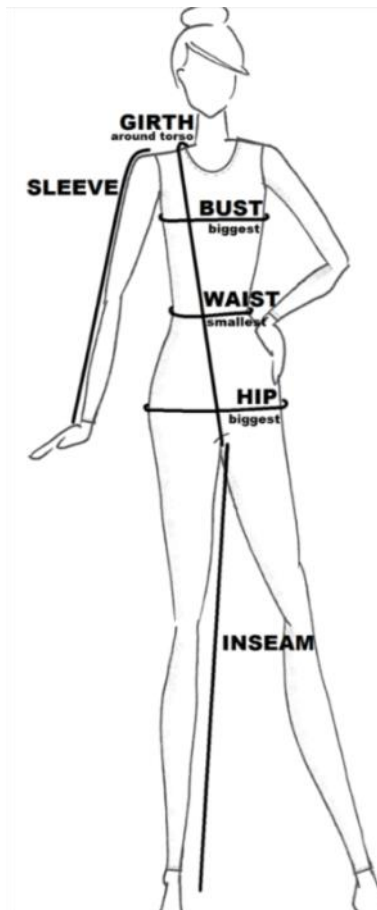
Youth-Girls & Boys

Size	Bust	Waist	Hip	Girth	Sleeve Length* (top of shoulder to Wrist)	Inseam* (legging/loose)
YXS	20-22	20-21	20-22	35-38	13.5	15/17
YS	22-25	21-22	22-25	38-43	15.5	19.5/22
YINT**	25-27	22-23	24-27	42-45	16	22.5/25
YM	26-29	23-24	26-30	44-48	16.5	23.5/26
YL	29-32	25-26	31-34	49-53	18.5	25.5/28

** YINT is a half step between the normal size step of YS to YM

Men

Size	Chest	Waist	Hip	Girth	Sleeve Length* (top of shoulder to Wrist)	Inseam* (legging/loose)
MXS	30-32	26-28	32-34	52-54	24	32/35
MS	32-34	28-30	34-35	55-58	24	32/35
MM	34-36	31-32	36-37	59-61	24.5	32/35
ML	36-38	33-34	38-39	62-65	25	32/35
MXL	38-40	35-37	40-41	66-68	25.5	32/35
M2XL	40-42	38-40	42-43	69-71	26	32/35
M3XL	42-44	41-43	44-45	72-74	26.5	32/35
M4XL	45-47	44-45	46-48	75-77	26.5	32/35



MATTE, SHINY + MESH

	Off White		Wine		Hibiscus
	Ivory		Merlot		Violet
	Light Peach		Plum		Cerise
	Natural		Purple		Coral
	Mocha		Deep Purple		Neon Pink
	Khaki		Bluish Purple		Neon Orange
	Sable		Lilac		Neon Green
	D. Rose		Orchid		Neon Yellow
	Bubblegum Pink		Turquoise		Celery
	Blush Pink		Corona		Moss Green
	Medium Pink		Royal		Apple Green
	Sweet Potato		Sapphire		Glo Green
	Deep Pink		Mint Green		Kelly Green
	Lipstick		Seafoam		Forest Green
	Fuchsia		Jade Green		Baby Blue
	Raspberry		Mallard		Aquamarine
	Shocking Coral		Lemon Yellow		Sky Blue
	Cherry		Samba Yellow		Arabian Blue
	Crimson		Yellow		Teal
	Brick		Athletic Gold		Tropical Turquoise
	Copper		Gold		Peacock
	Chocolate		Cantaloupe		Periwinkle
	Hunter		Orange		
	Olive		Paprika		

