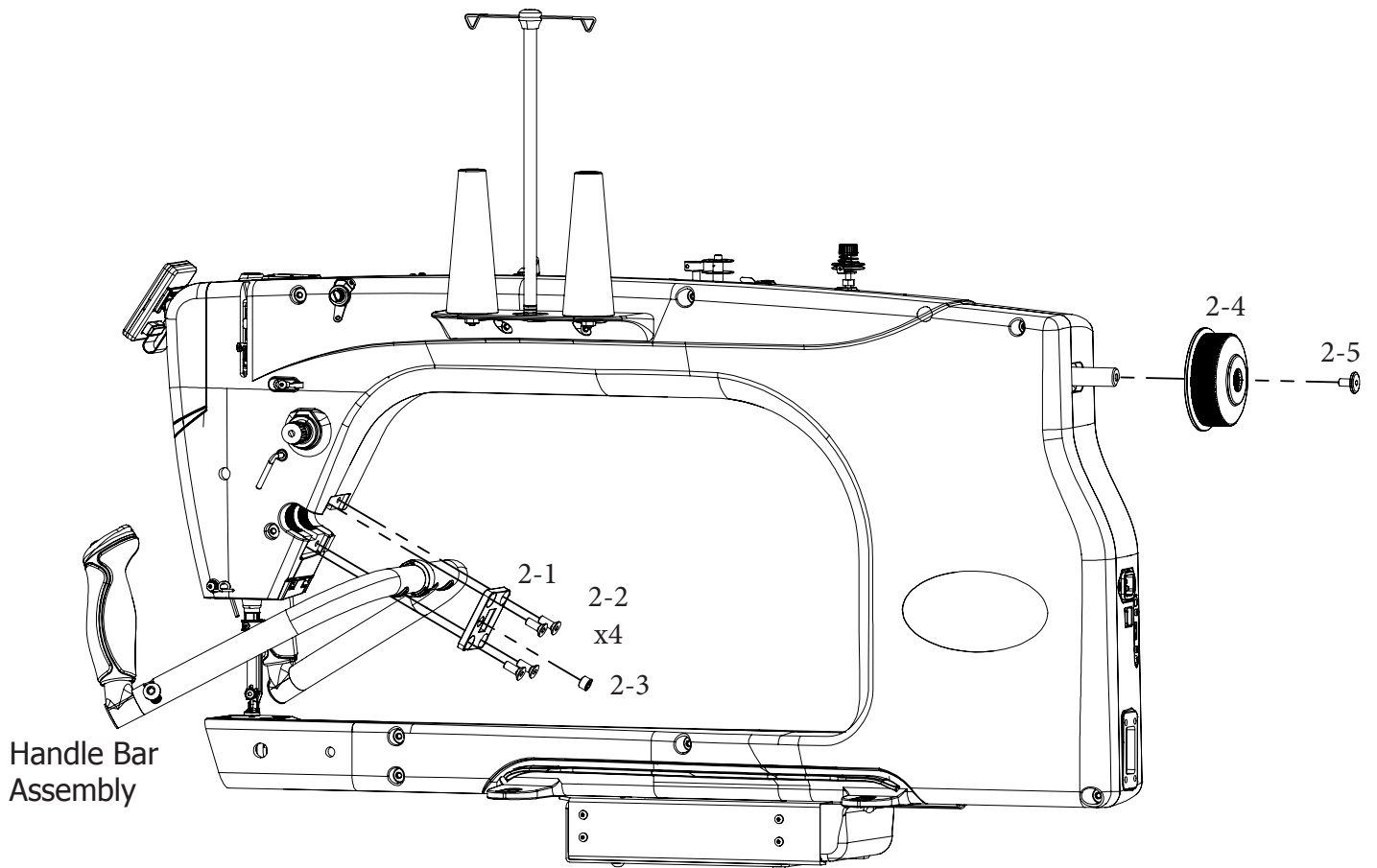


21" Sewing Machine

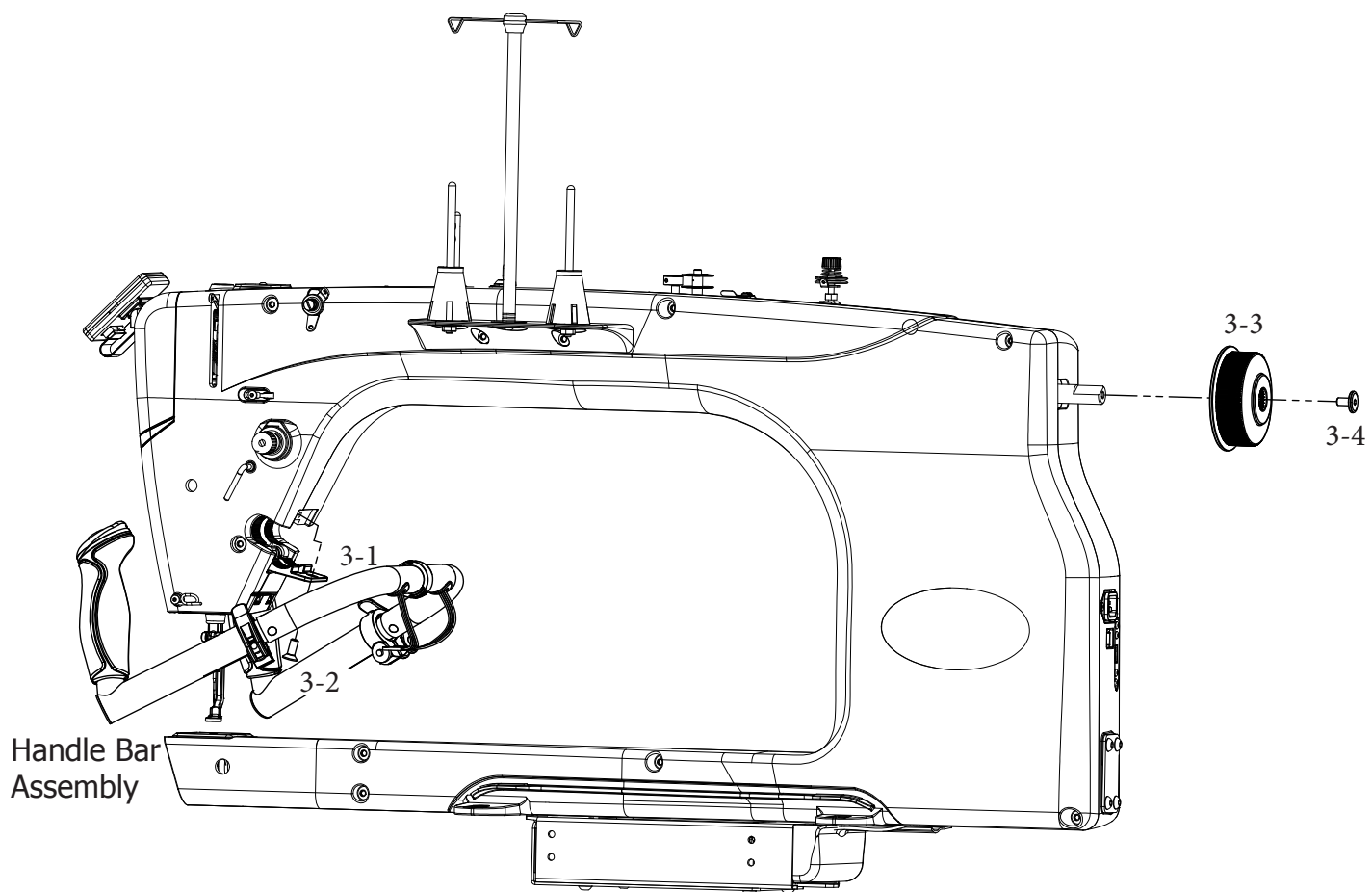
Table Of Contents

21" Sewing Machine Table of Contents.....	1
Handle Bar Assembly and Hand Wheel Removal	2
Thread Stand Removal.....	4
Front Cover and Display Removal	5
Power Supply Removal	6
Thread Tensioner Removal	7
Needle Plate and Presser Foot Removal.....	8
Front Housing Removal.....	10
Bushing Clamps Removal	11
Top Shaft Assembly	12
Lower Shaft Assembly	13
Handle Bar Assembly	14
LED Main Light Assembly	15
Motor Plate Assembly - Separate Motor Driver Board Mount Version.....	16
Motor Driver Board Assembly	17
Idler Pulley Adjust Tension Assembly	19
Main Control Board Assembly	19
Bushing Block Assembly.....	20
Handle Connecting Block Assembly	21
Bobbin Winder Removal.....	22
Bobbin Winder Assembly	22

Handle Bar Assembly and Hand Wheel Removal

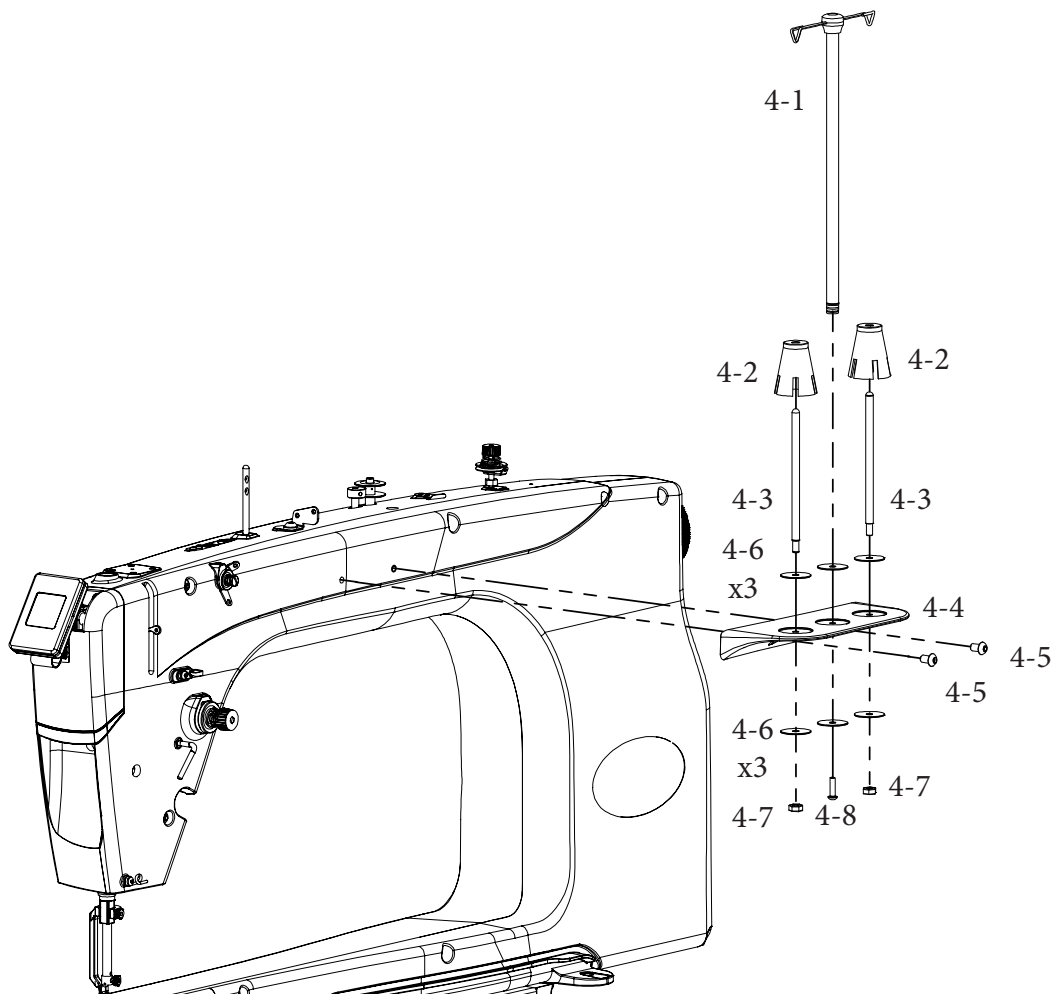


Ref No.	Part No.	Description
2-1	04-11717	Handle Plate
2-2	03-11741	M6 x 16mm Socket FCHS
2-3	03-11735	M10 x 8mm Hex Socket Set Screw
2-4	05-10026	Handle wheel
2-5	03-10027	M6 X 12mm Socket Connector Bolt



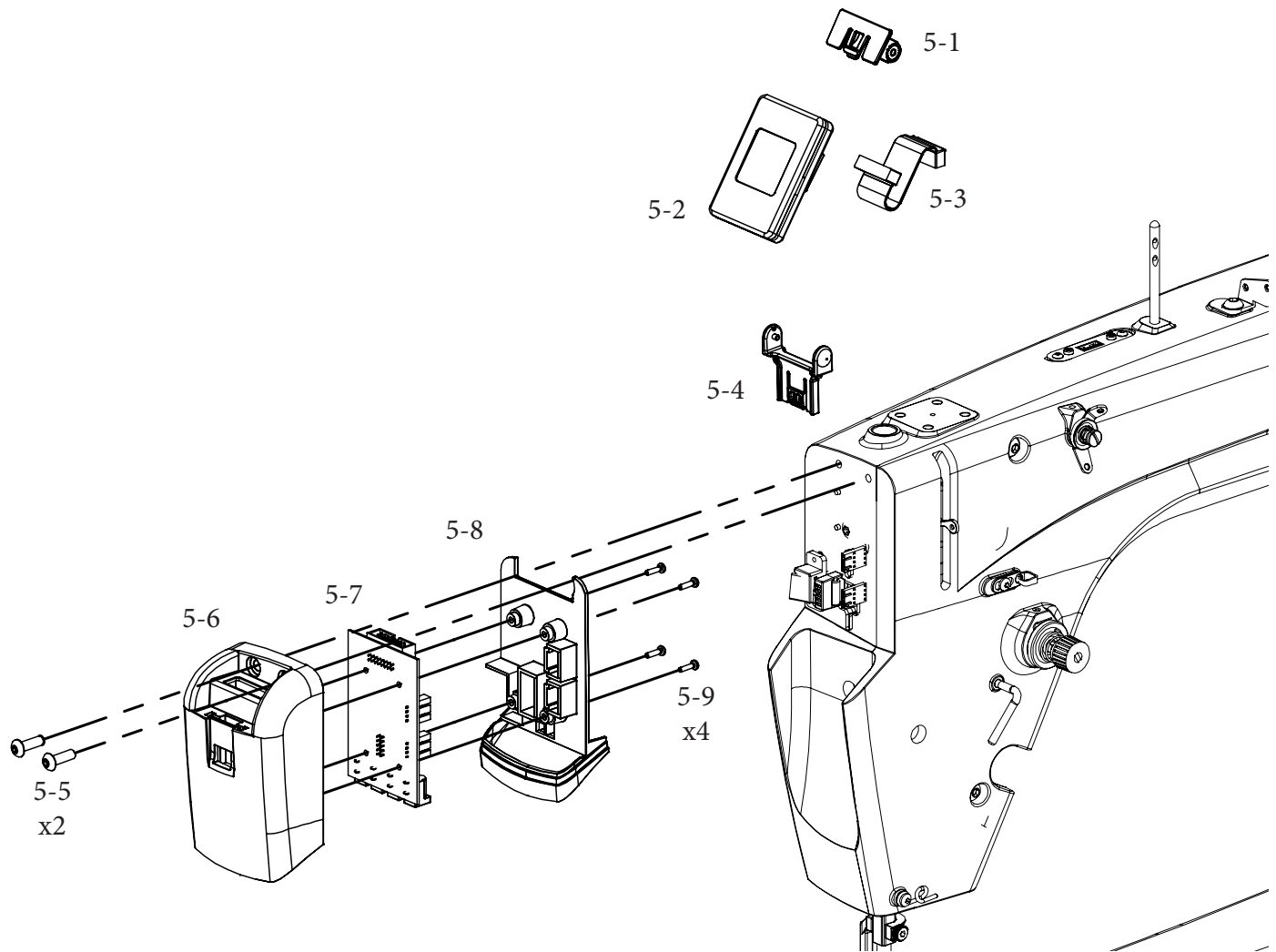
Ref No.	Part No.	Description
3-1		Handle Bar Clamp
3-2	03-11741	M6 x 16mm Socket FCHS
3-3	05-10026	Handle wheel
3-4	03-10027	M6 X 12mm Socket Connector Bolt

Thread Stand Removal



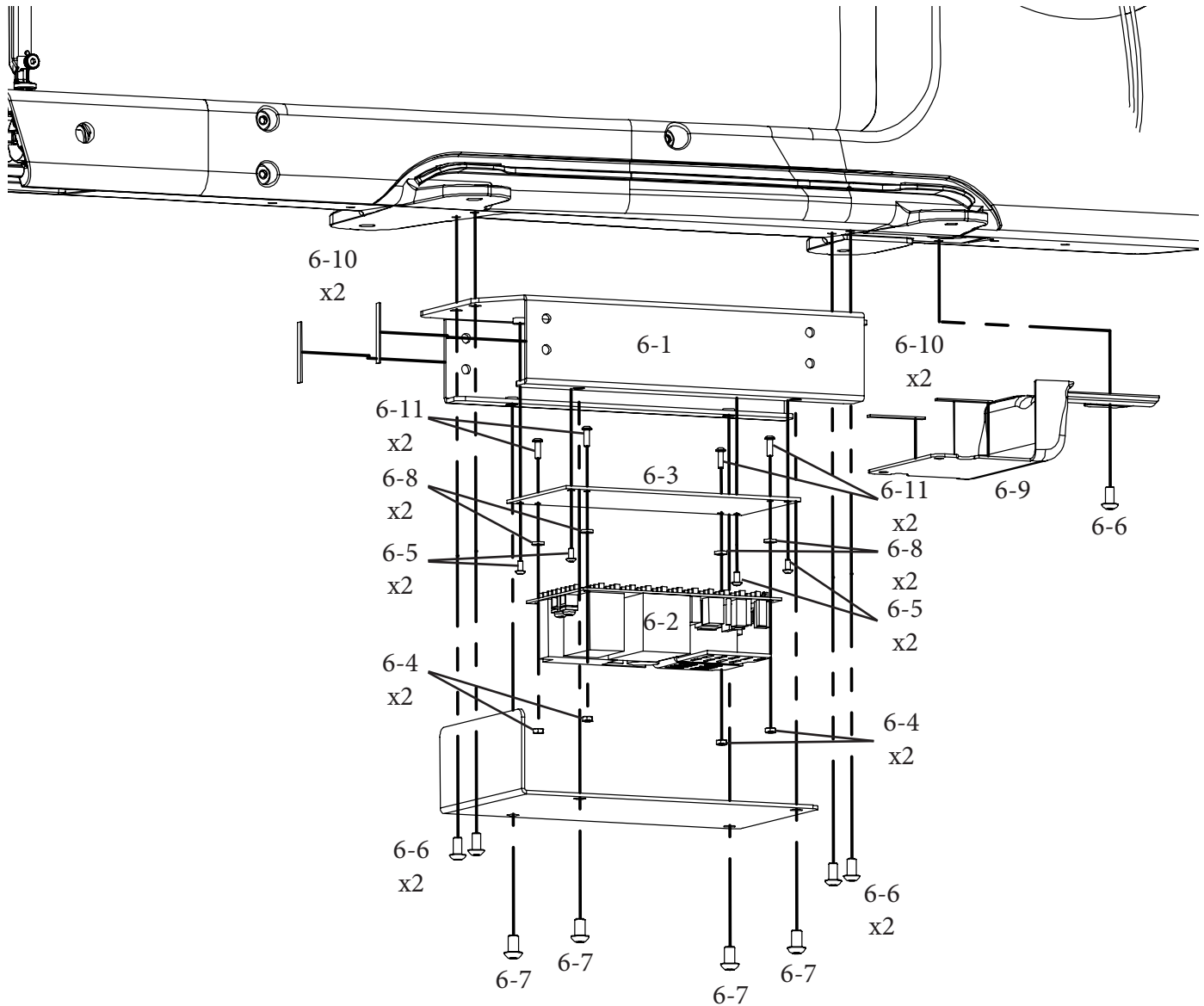
Ref No.	Part No.	Description
4-1	01-10113	Thread Stand Asm Two Sided
4-2	05-10117	Spool Retainer
4-3	04-10115	Thread Stand Pin
4-4	05-11720	Thread Spool Stand
4-5	03-10124	M6 X 10mm SBHCS
4-6	03-11304	“Washer M5(5ID X 25OD X 1.5mm T)”
4-7	03-10085	M4 Hex nut
4-8	03-10012	M4 X 8mm SBHCS

Front Cover and Display Removal



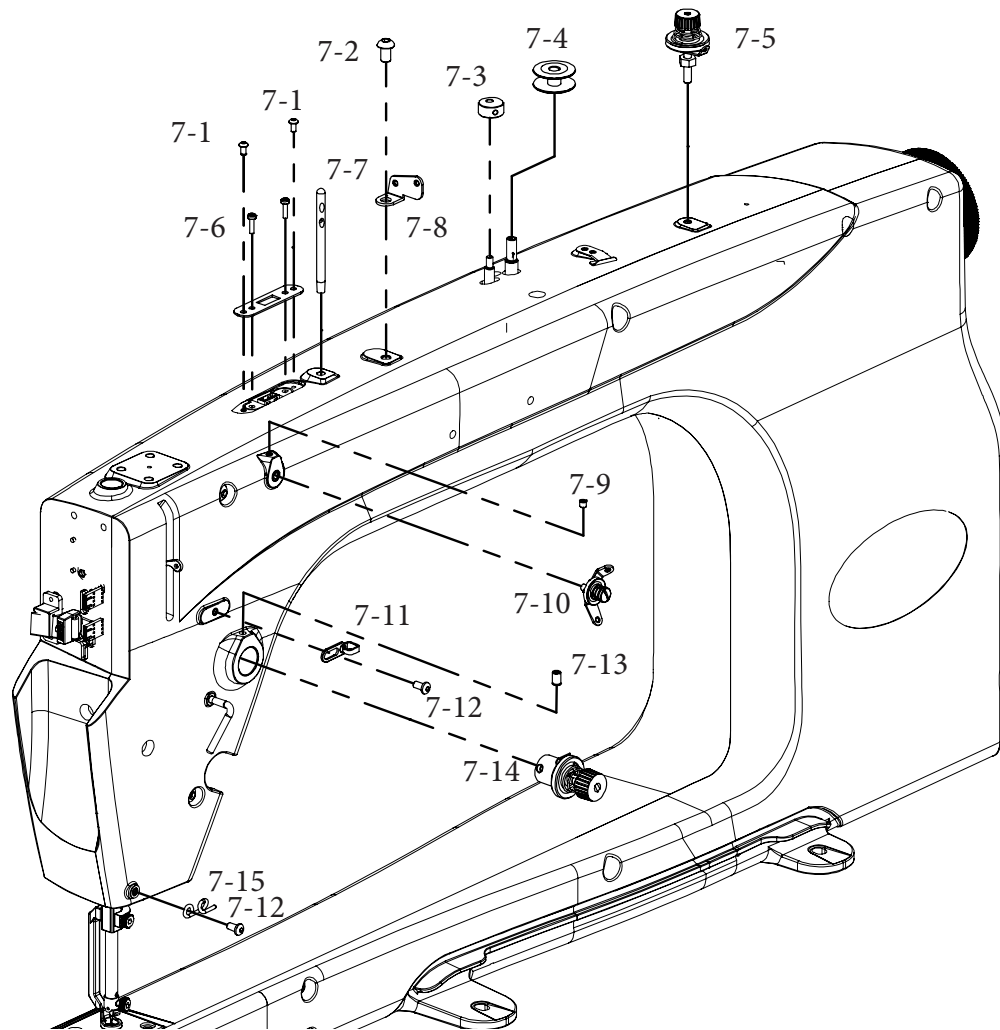
Ref No.	Part No.	Description
5-1	05-10141	OLED Pivot Mount B
5-2		Front Display
5-3	02-10763	Front Display Controller Cable
5-4	05-10140	OLED Pivot Mount A
5-5	03-10857	M5 X 16mm SBHCS
5-6	05-11722	Front Plastic
5-7	01-10227	Display Controller PCBA Assy
5-8	05-11723	Front Plastics Back
5-9	03-11307	M2.5 X 10mm Pan Head Self Tapping Screw

Power Supply Removal



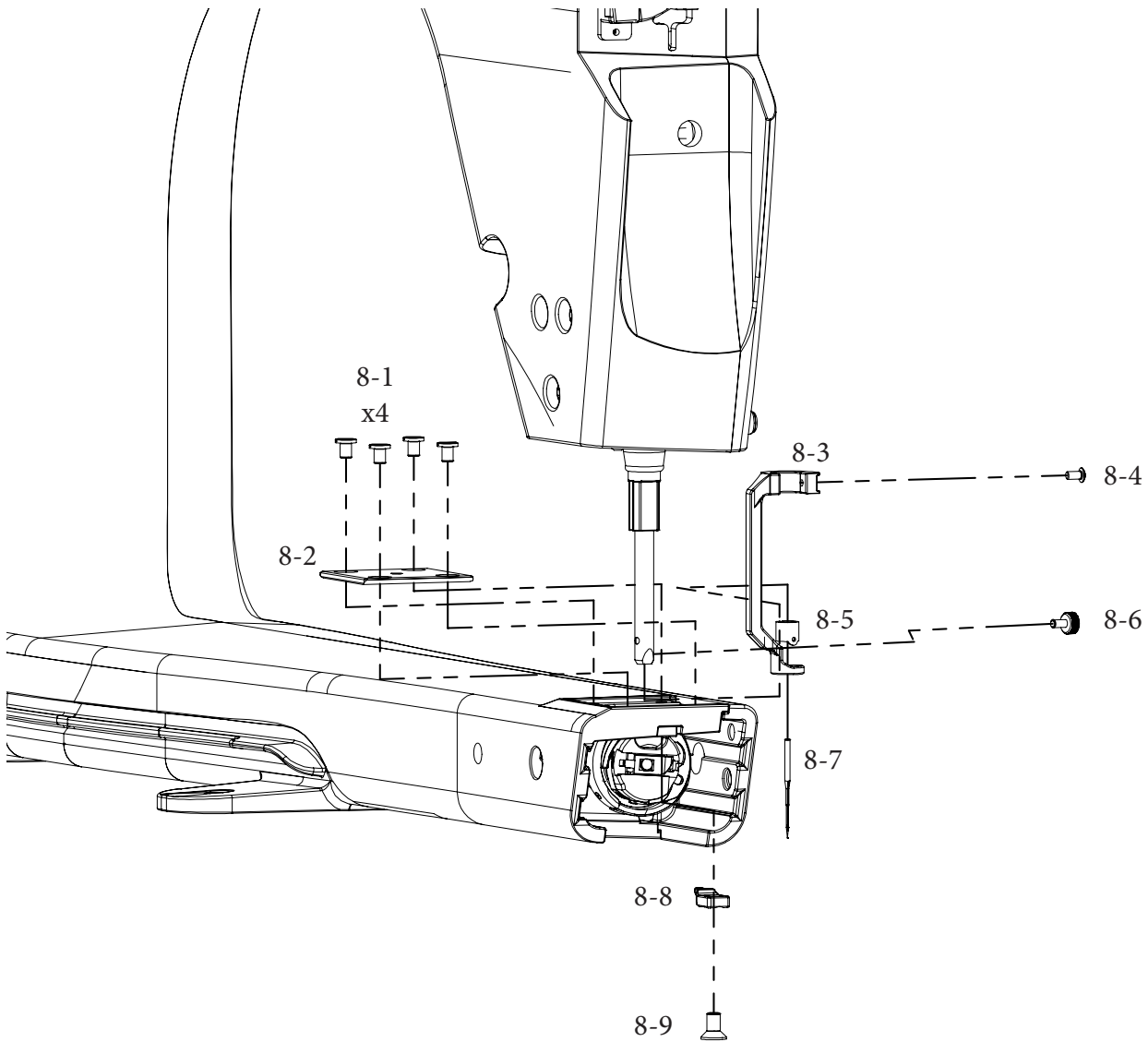
Ref No.	Part No.	Description
	2600 RPM/1800 RPM	2600 RPM/ 1800 RPM
6-1		Power Supply Bracket 24V
6-2	XX-XXXXX/ 01-10225	Meanwell Power Supply
6-3	05-10877	Power Supply Mounting Board
6-4	03-11311	M3 Hex Nut
6-5	03-10177	M3 X 6mm SBHCS
6-6	03-10073	M5 X 10mm SBHCS
6-7	03-10124	M6 X 10mm SBHCS
6-8	05-10832	Power Supply Plastic Standoff
6-9	05-11703	Wire Cover
6-10	08-11731	Rubber Tape, Single Sided Adhesive 6 X 38 X1mm”
6-11	03-11199	M3 X 10mm SBHCS

Thread Tensioner Removal

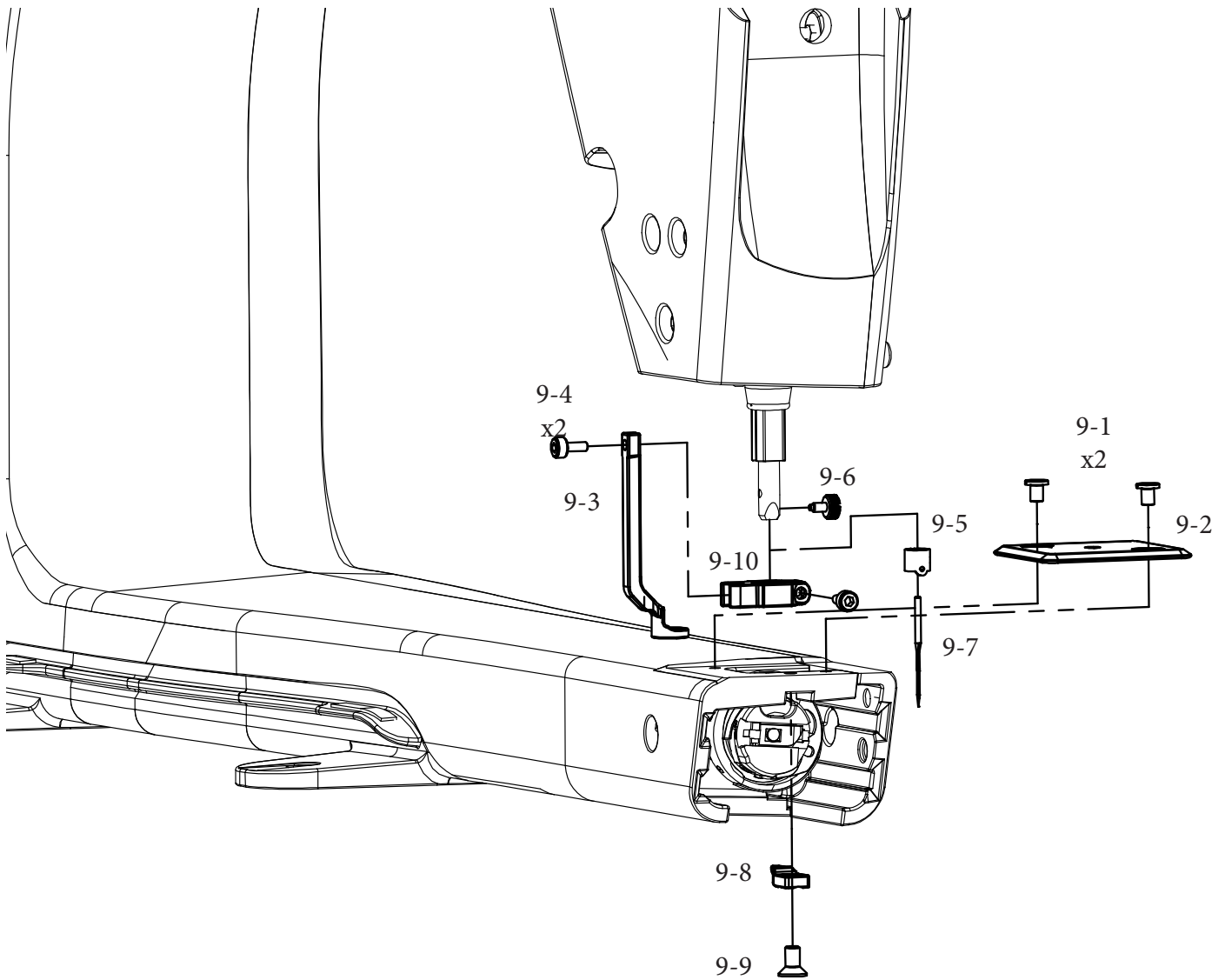


Ref No.	Part No.	Description
7-1	03-10177	M3 X 6mm SBHCS
7-2	03-10124	M6 X 10mm SBHCS
7-3	05-10102	Bobbin winder eccentric cam
7-4	08-10070	Bobbin
7-5	01-10107	Bobbin thread tension asm
7-6	03-11314	#4-40 X .375" Phillips Pan Head Machine Screw
7-7	04-10006	Thread guide rod
7-8	04-10110	Thread guide
7-9	03-10016	M4 X 4mm Socket Set Screw
7-10	01-10015	Thread tension asm(little)
7-11	04-10009	Arm thread guide(right)
7-12	03-10012	M4 X 8mm Socket Button Head Screw
7-13	03-10014	"M5 X 8mm Socket Set Screw"
7-14	01-10013	Thread tension asm
7-15	03-11465	Spring Thread Guide

Needle Plate and Presser Foot Removal

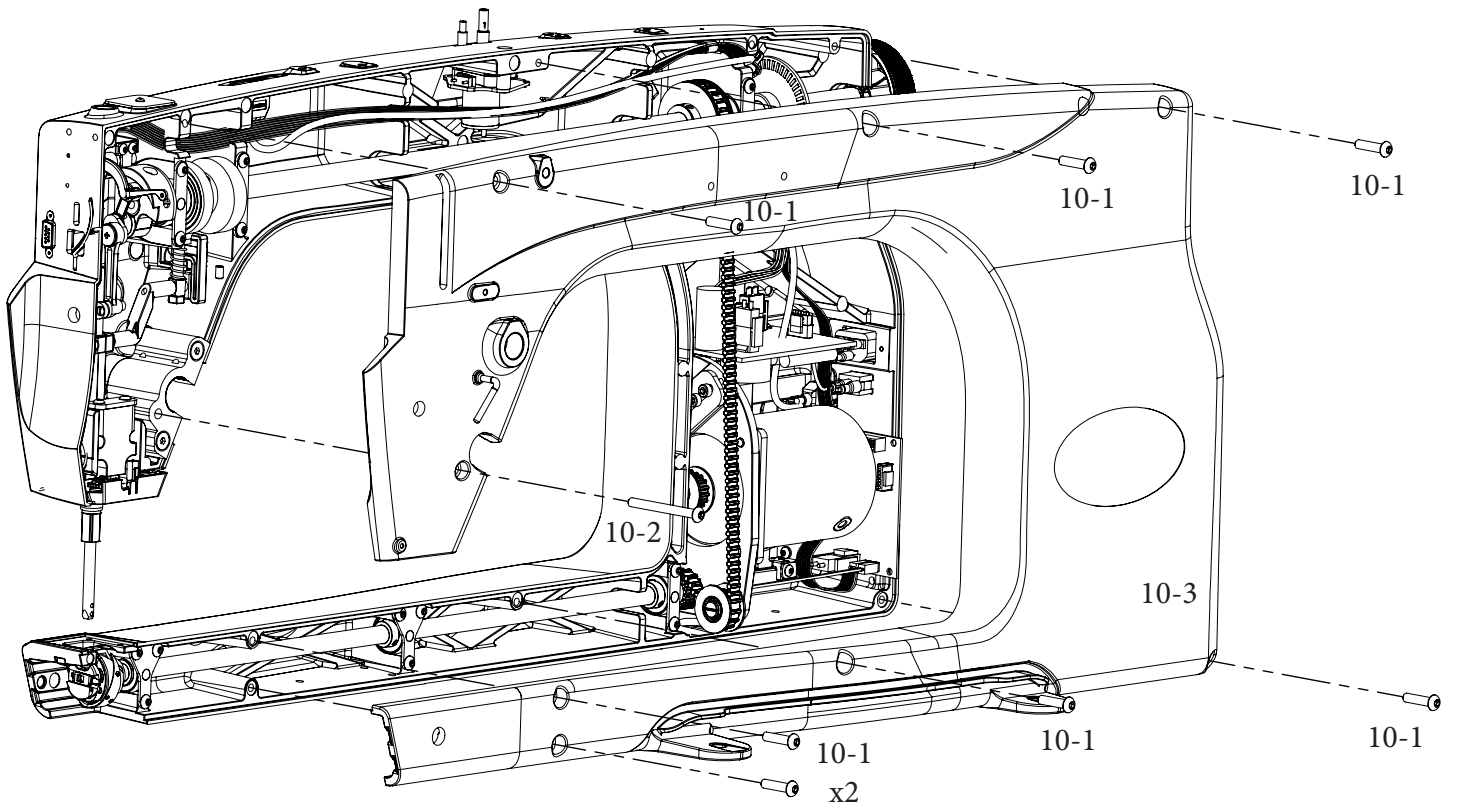


Ref No.	Part No.	Description
8-1	03-10005	Needle plate screw Ø4.36 X 5.85mm
8-2	04-10004	Needle plate
8-3		Presser foot_23005001
8-4	03-10177	M3 X 6mm SBHCS
8-5	04-10039	Needle bar thread guide
8-6	03-11736	M3 Thumb Screw
8-7	08-10040	Needle
8-8	04-10072	Hook holder
8-9	03-11740	M5 x 10mm FHCS



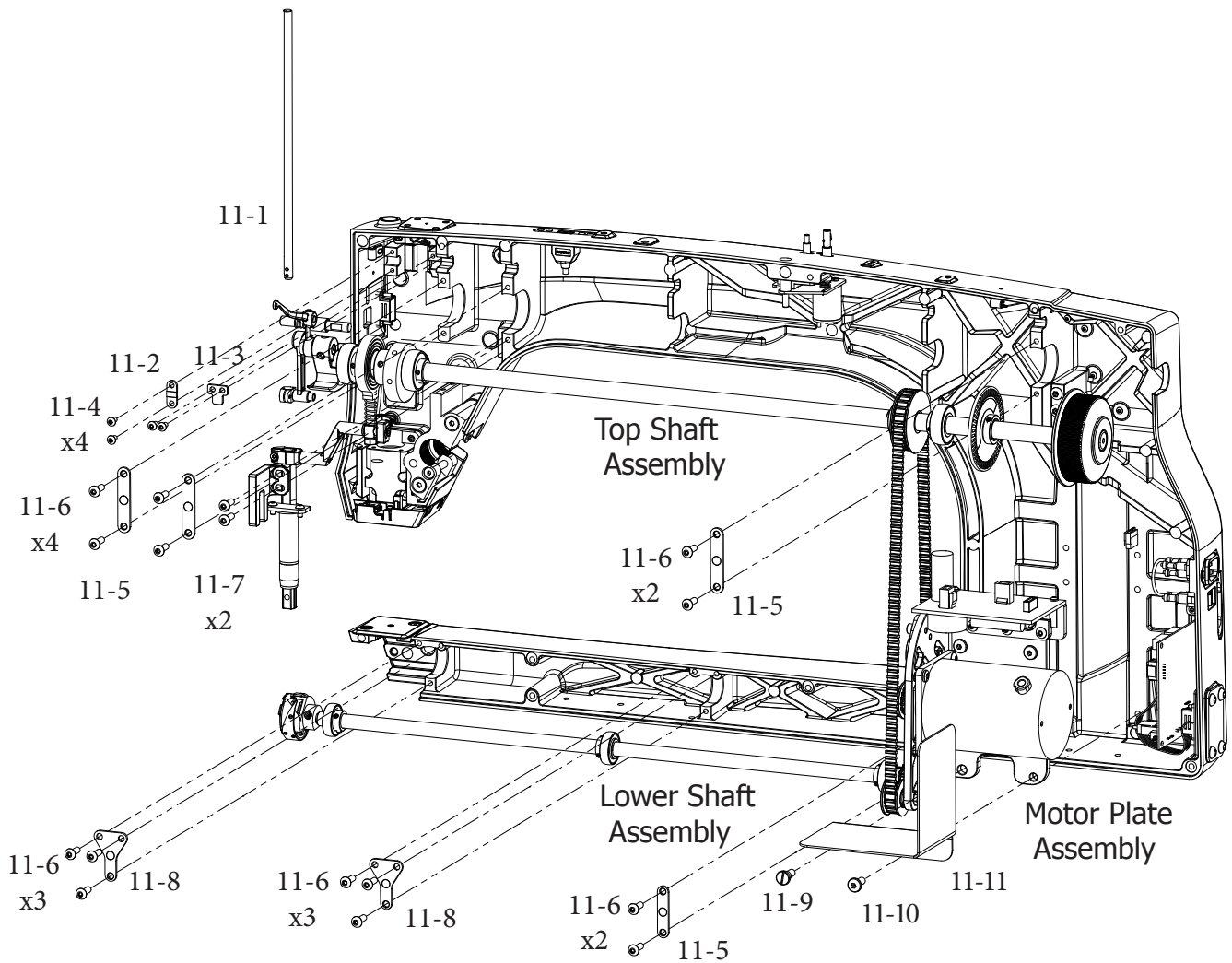
Ref No.	Part No.	Description
9-1	03-10005	Needle plate screw Ø4.36 X 5.85mm
9-2	04-10004	Needle plate
9-3		Presser foot_23005001
9-4	03-10177	M3 X 6mm SBHCS
9-5	04-10039	Needle bar thread guide
9-6	03-11736	M3 Thumb Screw
9-7	08-10040	Needle
9-8	04-10072	Hook holder
9-9	03-11740	M5 x 10mm FHCS
9-10		Hopping Foot Collar

Front Housing Removal



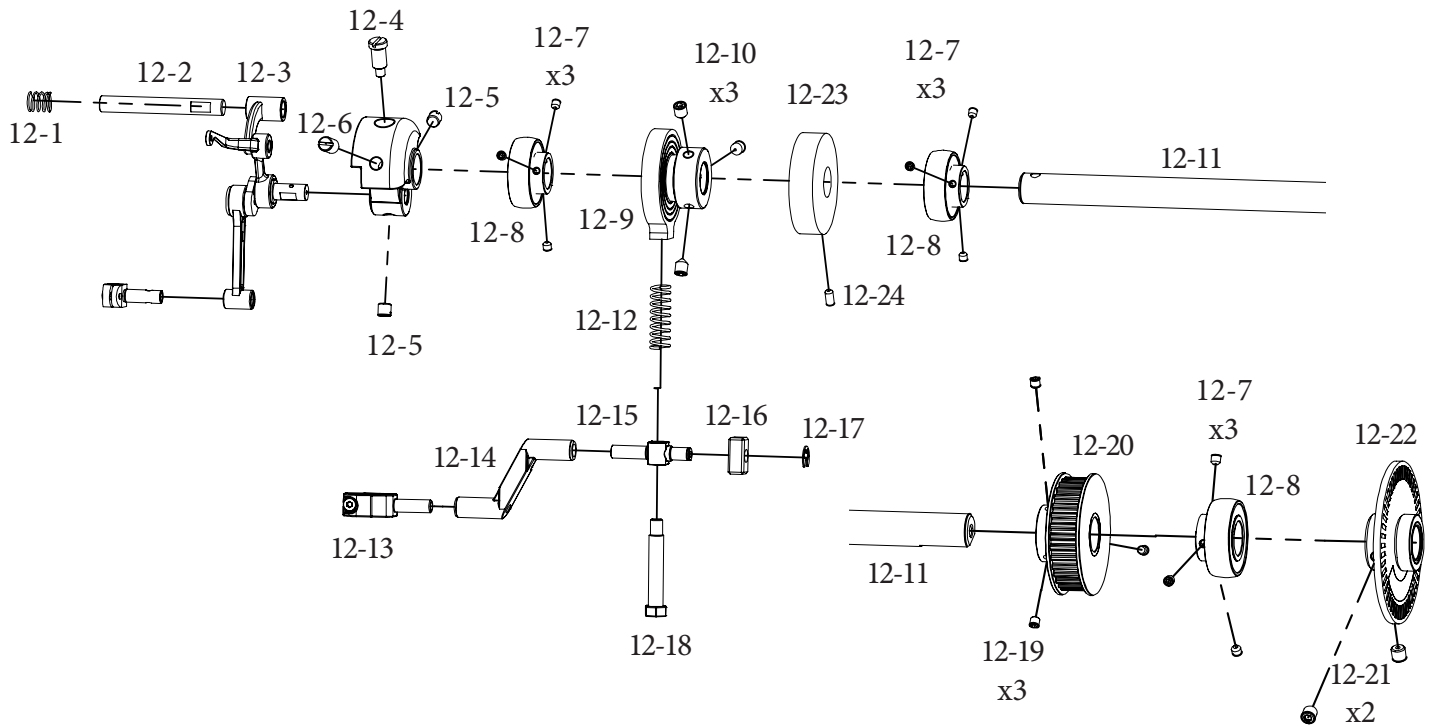
Ref No.	Part No.	Description
10-1	03-10215	M6 X 25 Socket Button Head Screw
10-2	03-11733	M6 X 60mm Socket Button Head Screw
10-3	04-11680	Sewing machine housing(front)

Bushing Clamps Removal



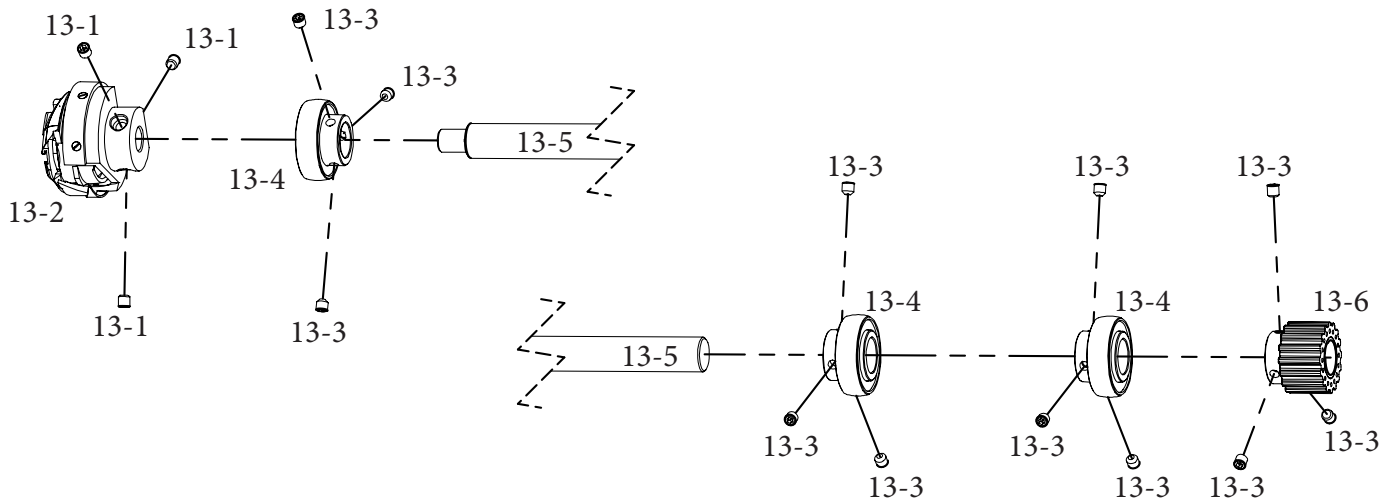
Ref No.	Part No.	Description
11-1	04-11711	Needle bar
11-2	04-11714	Thread Take UP Lever Clamp
11-3	04-11713	Thread Take UP Lever Clamp Right
11-4	03-10012	M4 X 8mm Socket Button Head Screw
11-5	04-10067	Lower shaft bushing clamp
11-6	03-10073	"M5 X 10mm Socket Button Head Screw"
11-7	04-11516	UNIT_5 Press bar components
11-8	04-11515	Slide plate
11-9	03-10092	Thread Pin
11-10	03-10974	M6 X 16mm Socket Button Head Screw
11-11		Motor Shield

Top Shaft Assembly



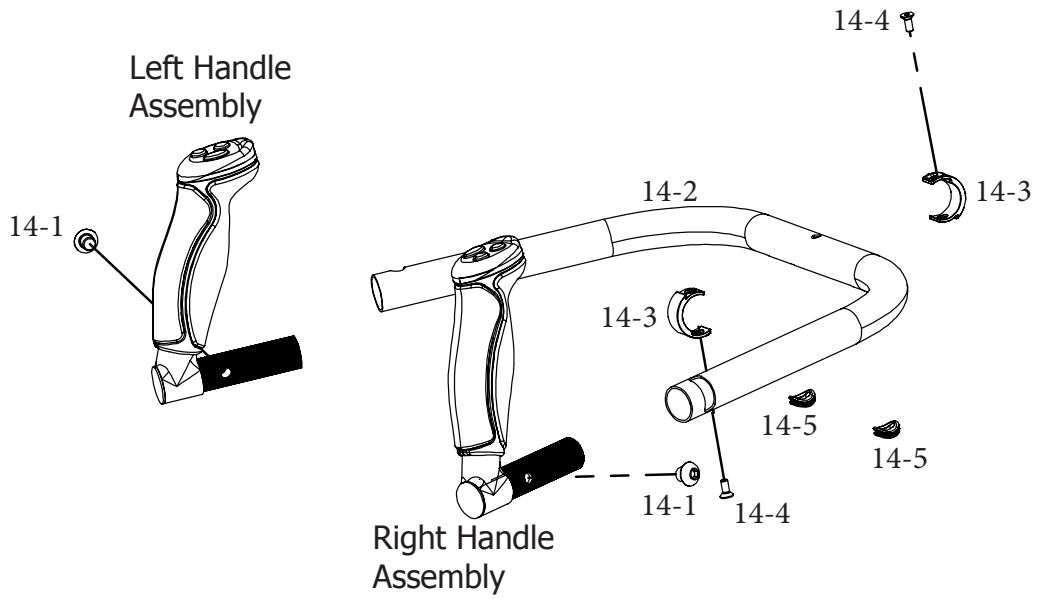
Ref No.	Part No.	Description
12-1	03-11463	Thread Take Up Spring
12-2	04-11523	Thread Take Up Crank Pin
12-3	01-10044	Thread take-up lever asm
12-4	03-10023	"Crank screw (orientation) Ø7.14 X 11mm shoulder, Ø4.42 X 5mm Thread"
12-5	03-10025	"Ø6.35 X 6mm Flat Set Screw"
12-6	03-10024	"Crank screw (securing) Ø7.14 X 16mm Flat Set Screw"
12-7	03-10016	M4 X 4mm Socket Set Screw
12-8	03-10017	Bearing 15mm Top Shaft Rounded w Collar
12-9	04-11505	Eccentric cam V2
12-10	03-10045	"M6 X 12mm Socket Set Screw"
12-11	04-11460	Main shaft
12-12	03-11464	Press Bar Spring
12-13	04-11525	Stop Collar
12-14	04-11513	Press Bar Slide Attachment
12-15	04-11512	Press bar Link
12-16	04-11514	Slide Block
12-17	03-11729	Retaining Ring
12-18	04-11515	Connecting link V2
12-19	03-10016	M4 X 4mm Socket Set Screw
12-20	03-10032	Top Shaft Pulley
12-21	03-10037	M6 X 6mm Socket Set Screw
12-22	05-10033	Optical encoder wheel asm
12-23	04-11524	Secondary counterweight
12-24	03-10014	"M5 X 8mm Socket Set Screw"

Lower Shaft Assembly

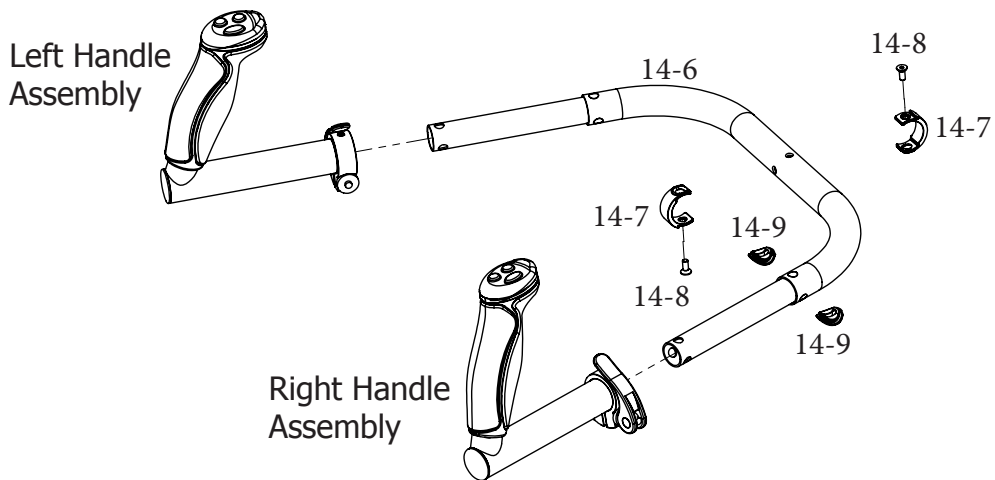


Ref No.	Part No.	Description
13-1	03-10077	Hook asm'y set screw 11/64-40thread
13-2	01-10071	Hook asm'y
13-3	03-10016	M4 X 4mm Socket Set Screw
13-4	03-11467	Bearing 12mm Bottom Shaft Rounded w Collar
13-5	0411459	Lower shaft
13-6	05-10075	Lower Shaft Pulley

Handle Bar Assembly

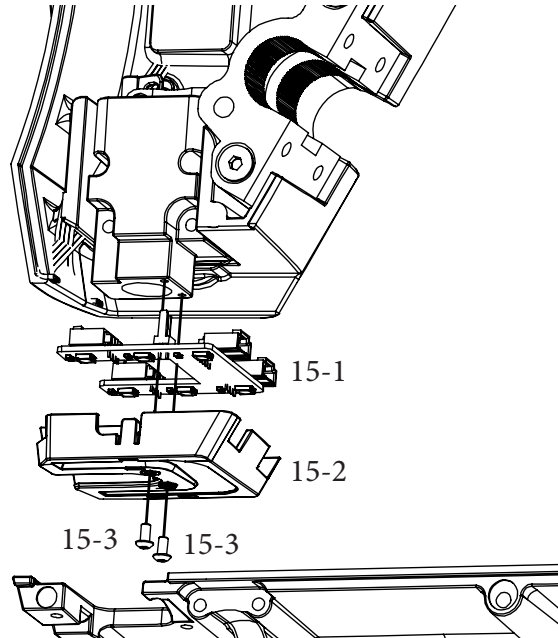


Ref No.	Part No.	Description
14-1	03-11734	M8 x 8mm SBHCS
14-2	04-11517	Handle Bar Set
14-3	05-11721	Plastic Bolt On Collar
14-4		M4 x 10mm FHCS
14-5	05-11725	Rubber Grommet



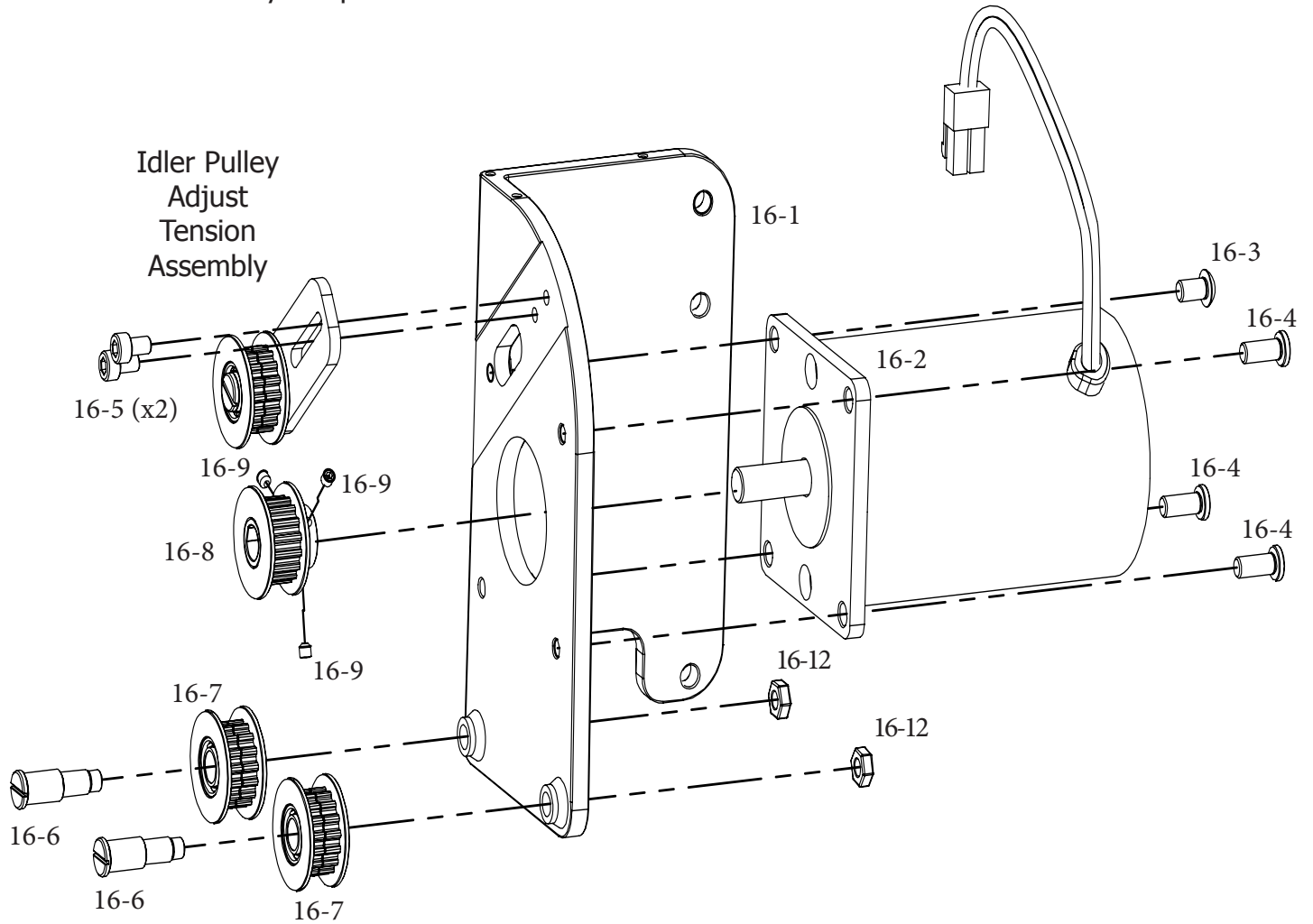
Ref No.	Part No.	Description
14-6	04-11517	Handle Bar Set
14-7	05-11721	Plastic Bolt On Collar
14-8		M4 x 10mm FHCS
14-9	05-11725	Rubber Grommet

LED Main Light Assembly



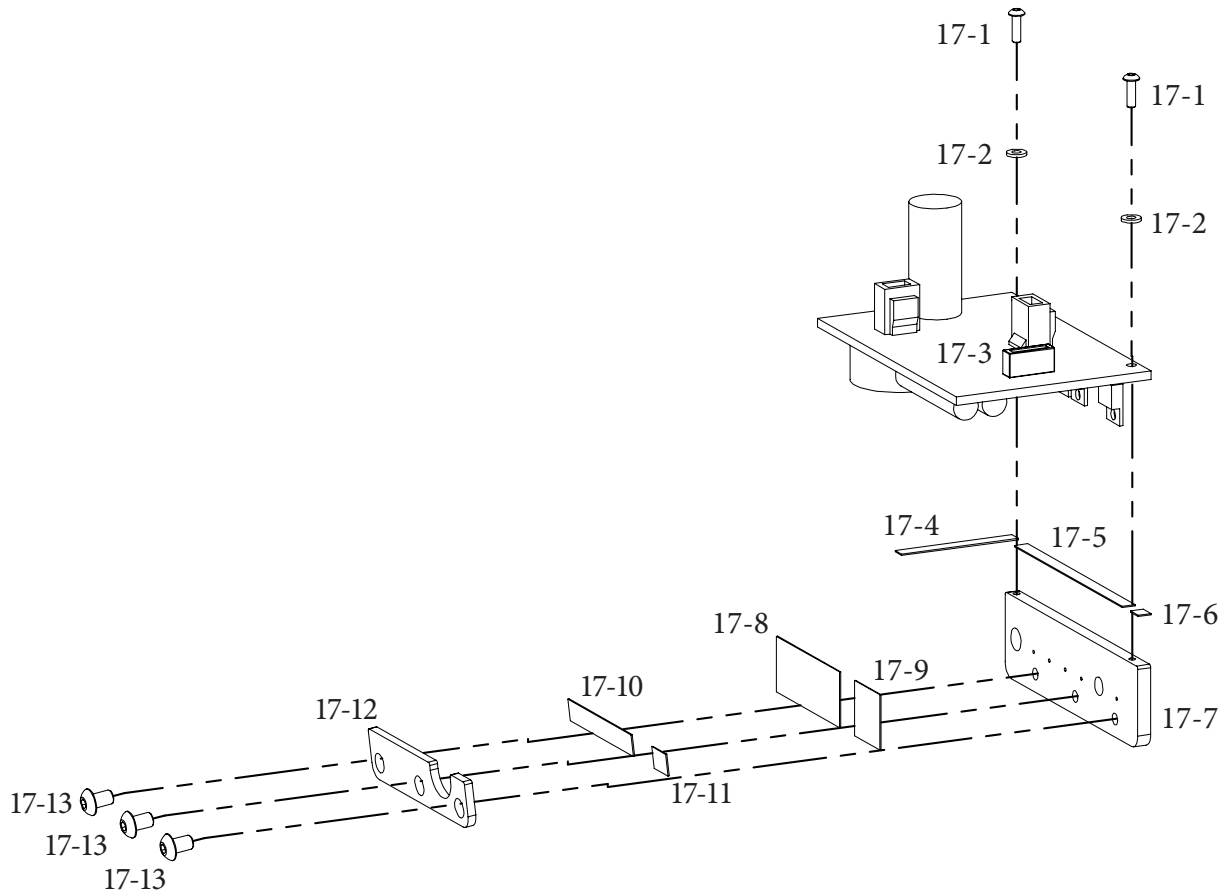
Ref No.	Part No.	Description
15-1	01-10194	Led Board with Handle Connectors
15-2	05-11724	Led Lens Cover
15-3	03-10177	M3 X 6mm SBHCS

Motor Plate Assembly - Separate Motor Driver Board Mount Version



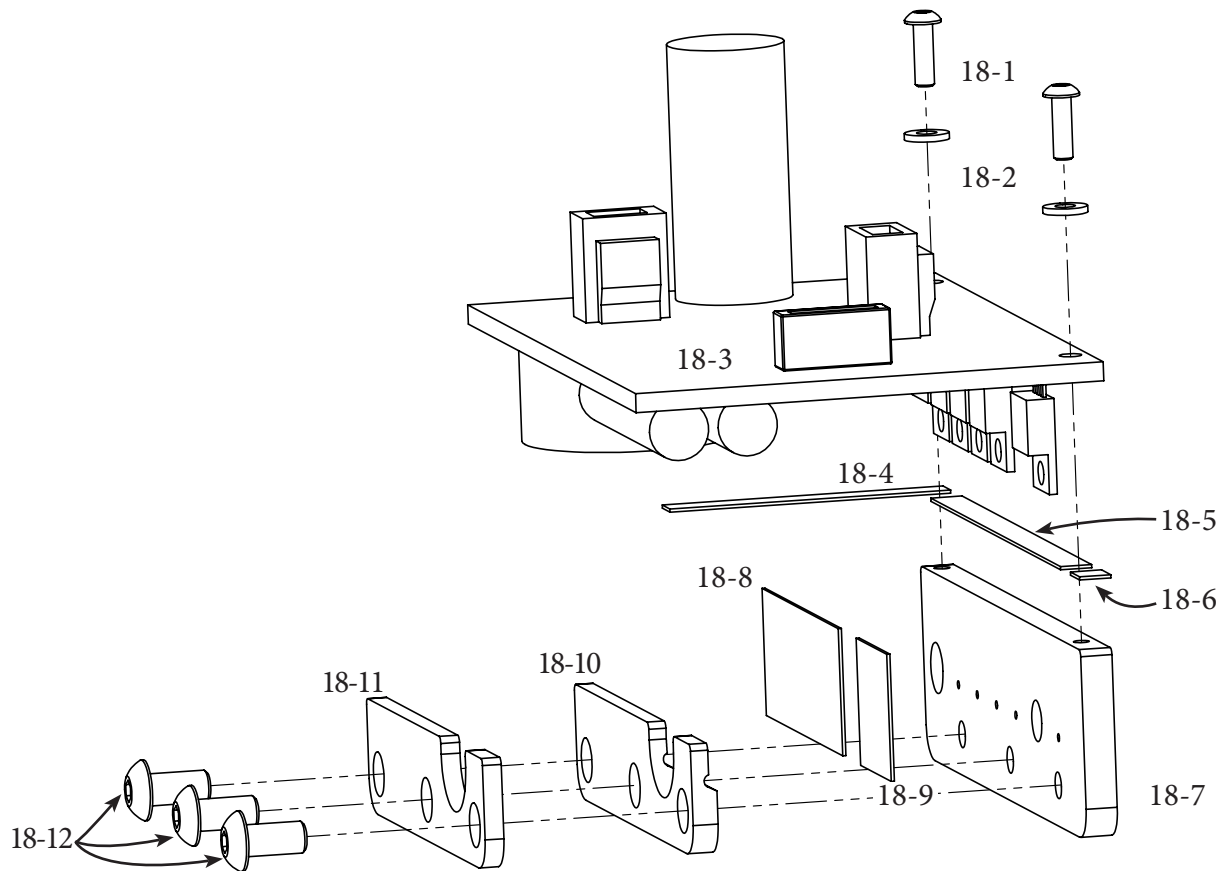
Ref No.	Part No.	Description
16-1	04-10087	Pulley Base
16-2	02-10219	DC Motor
16-3	03-10124	M6 x 10mm SBHCS
16-4	03-10221	M6 x 14mm SBHCS
16-5	03-10084	M5 x 8mm Barrel Head Screw
16-6	03-10091	Pulley Axle
16-7	01-10089	Timing Belt Idler Pulley
16-8	05-10086	Motor Timing Belt Pulley
16-9	03-10016	M4 x 4mm Set Screw
16-10	03-10085	M6 Hex Nut

Motor Driver Board Assembly



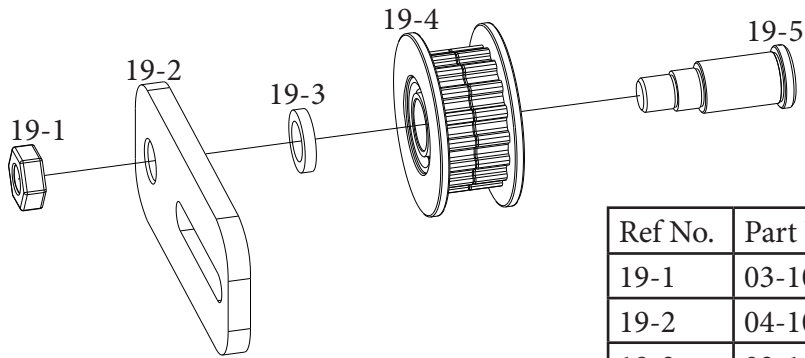
Ref No.	Part No.	Description
17-1	03-11199	M3 X 10mm SBHCS
17-2		M3 Nylon Washer
17-3	01-10228	Motor Driver PCBA
17-4	08-11667	"Foam Tape, Single Sided Adhesive 6 X 45 X1mm"
17-5	08-11668	"Foam Tape, Single Sided Adhesive 6 X 85 X1mm"
17-6	08-11664	"Foam Tape, Single Sided Adhesive 6 X 6 X1mm"
17-7	04-11417	Aluminum Motor Driver Board Mount
17-8	08-10143	Thermal Tape
17-9	08-10876	Thermal Tape small
17-10		"Foam Tape, Single Sided Adhesive 8 X 50 X 1mm"
17-11		"Foam Tape, Single Sided Adhesive 8 X 11 X 1mm"
17-12		Heat Sink Clamp
17-13	03-10073	M5 x 10mm SBHCS

Motor Driver Board Assembly



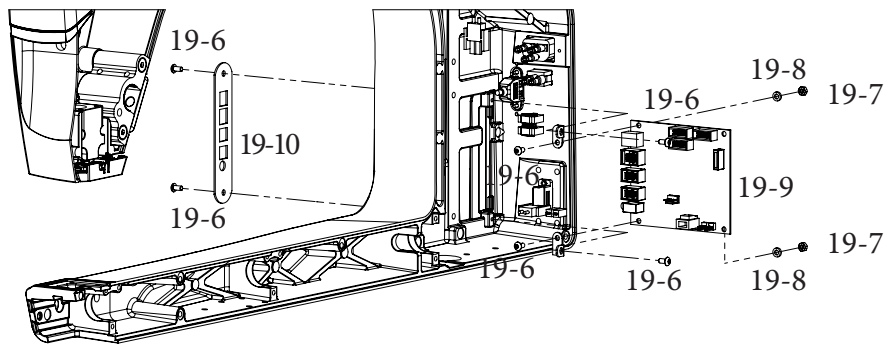
Ref No.	Part No.	Description
18-1	03-11199	M3 x 10mm SBHCS
18-2		M3 Nylon Washer
18-3	01-10228	Motor Driver PCBA
18-4	08-11667	"Foam Tape, Single Sided Adhesive 6 X 45 X1mm"
18-5	08-11668	"Foam Tape, Single Sided Adhesive 6 X 85 X1mm"
18-6	08-11664	"Foam Tape, Single Sided Adhesive 6 X 6 X1mm"
18-7	04-11417	Aluminum Motor Driver Board Mount
18-8	08-10143	Thermal Tape
18-9	08-10876	Thermal Tape small
18-10	05-11727	Heat Sink Clamp Insulator
18-11		Heat Sink Clamp
18-12	03-10073	M5 x 10mm SBHCS

Idler Pulley Adjust Tension Assembly



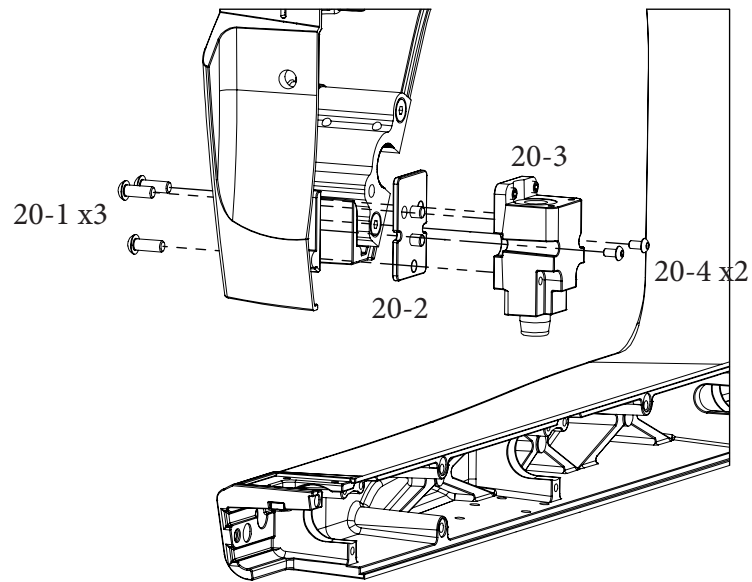
Ref No.	Part No.	Description
19-1	03-10085	M6 Hex Nut
19-2	04-10082	Idler Pulley Adjust Sheet
19-3	03-11299	Pulley Spacer
19-4	01-10089	Timing Belt Idler Pulley
19-5	03-10091	Pulley Axle

Main Control Board Assembly



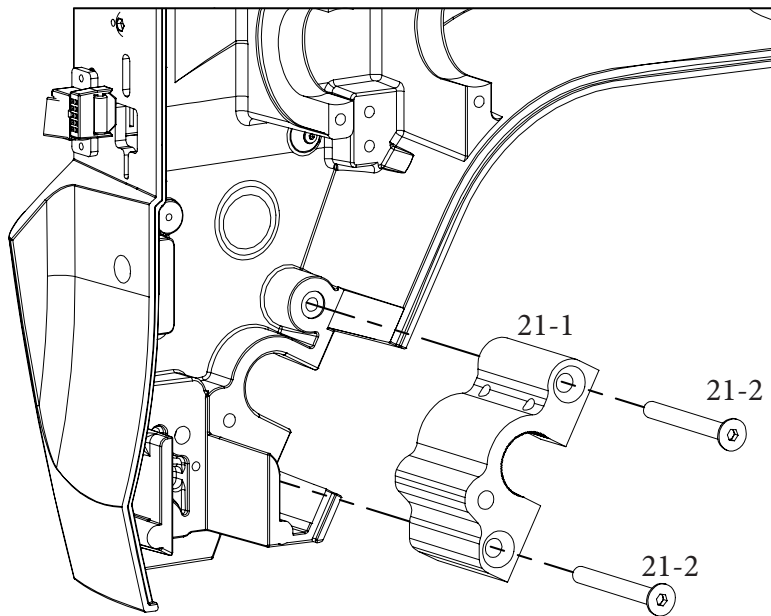
Ref No.	Part No.	Description
19-6	03-10012	M4 X 8mm Socket Button Head Screw
19-7	03-10085	M4 Hex nut
19-8		Mounting board washer
19-9	01-10226	Main Controller PCBA
19-10	04-11718	Connector board cover

Bushing Block Assembly

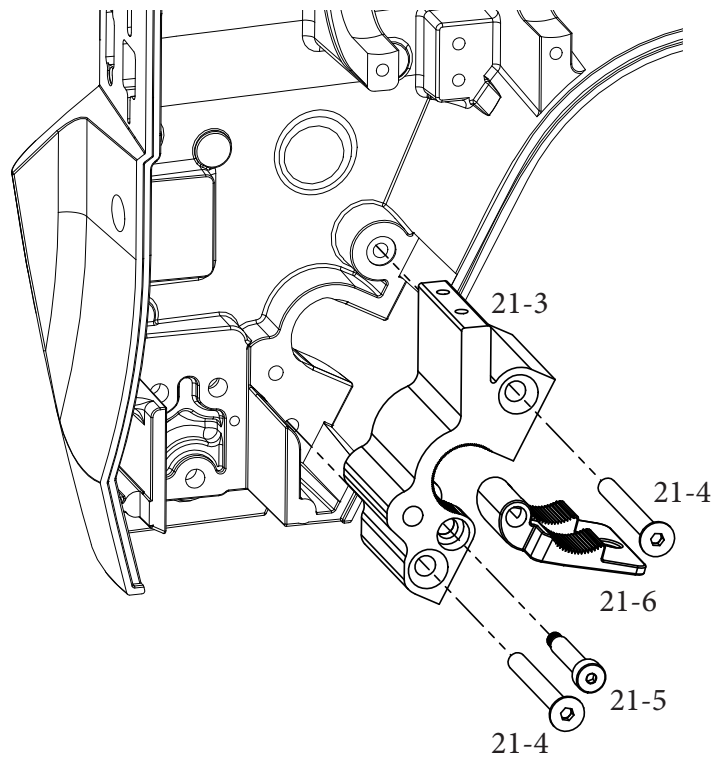


Ref No.	Part No.	Description
20-1	03-10974	M6X16 SBHCS
20-2	04-11521	Bushing Block adjustment plate
20-3	04-11522	Needle Bar Bushing Block
20-4	03-10012	M4X8 SBHCS

Handle Connecting Block Assembly

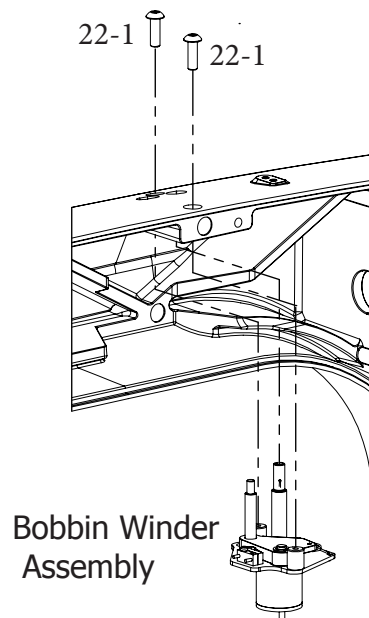


Ref No.	Part No.	Description
21-1	04-11701	Handle Connecting Block
21-2	03-11742	M6 x 55 Socket FCBS



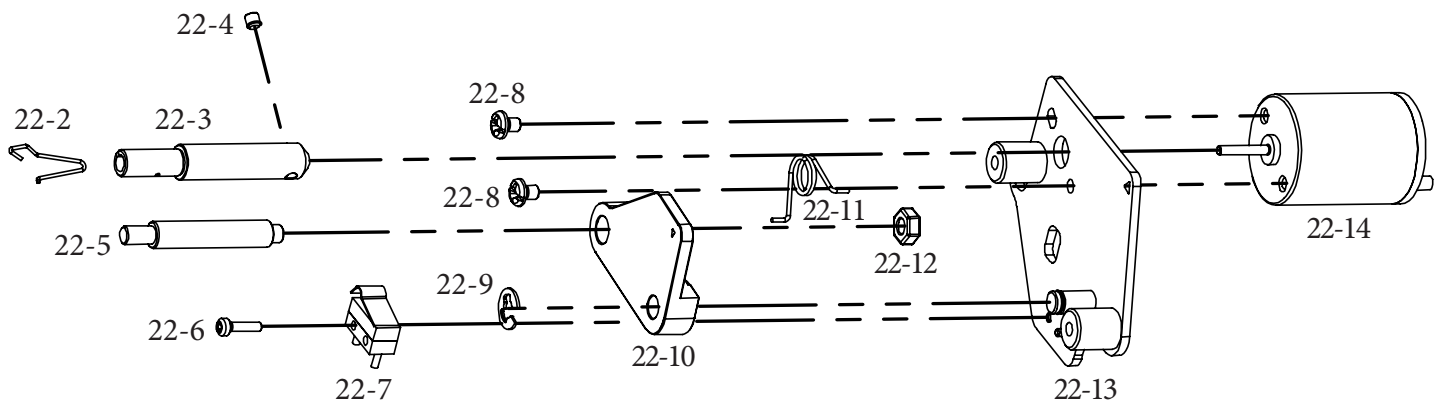
Ref No.	Part No.	Description
21-3	04-11701	Handle Connecting Block
21-4	03-11742	M6 x 55 Socket FHCS
21-5		M5 Socket Drive Shoulder Screw
21-6		Handle Bar Clamp

Bobbin Winder Removal



Ref No.	Part No.	Description
22-1	03-10857	M5X16 SBHCS

Bobbin Winder Assembly



Ref No.	Part No.	Description
22-2	03-10099	Bobbin winder spring
22-3	04-10098	Bobbin winder shaft
22-4	03-10103	M3 X 7mm Set Screw
22-5	04-10100	Bobbin winder baffle shaft
22-6	03-10105	M2 X 7.5mm Socket Button Head Screw
22-7	02-10104	Winder switch
22-8	03-10096	M3 X 4mm Phillips Head Screw
22-9	03-10112	E ring
22-10	05-10101	Bobbin winder baffle
22-11	03-10106	Bobbin winder spring
22-12	03-10062	M4 Nut
22-13	04-10094	Bobbin winder base
17-14	02-10095	Bobbin winder motor